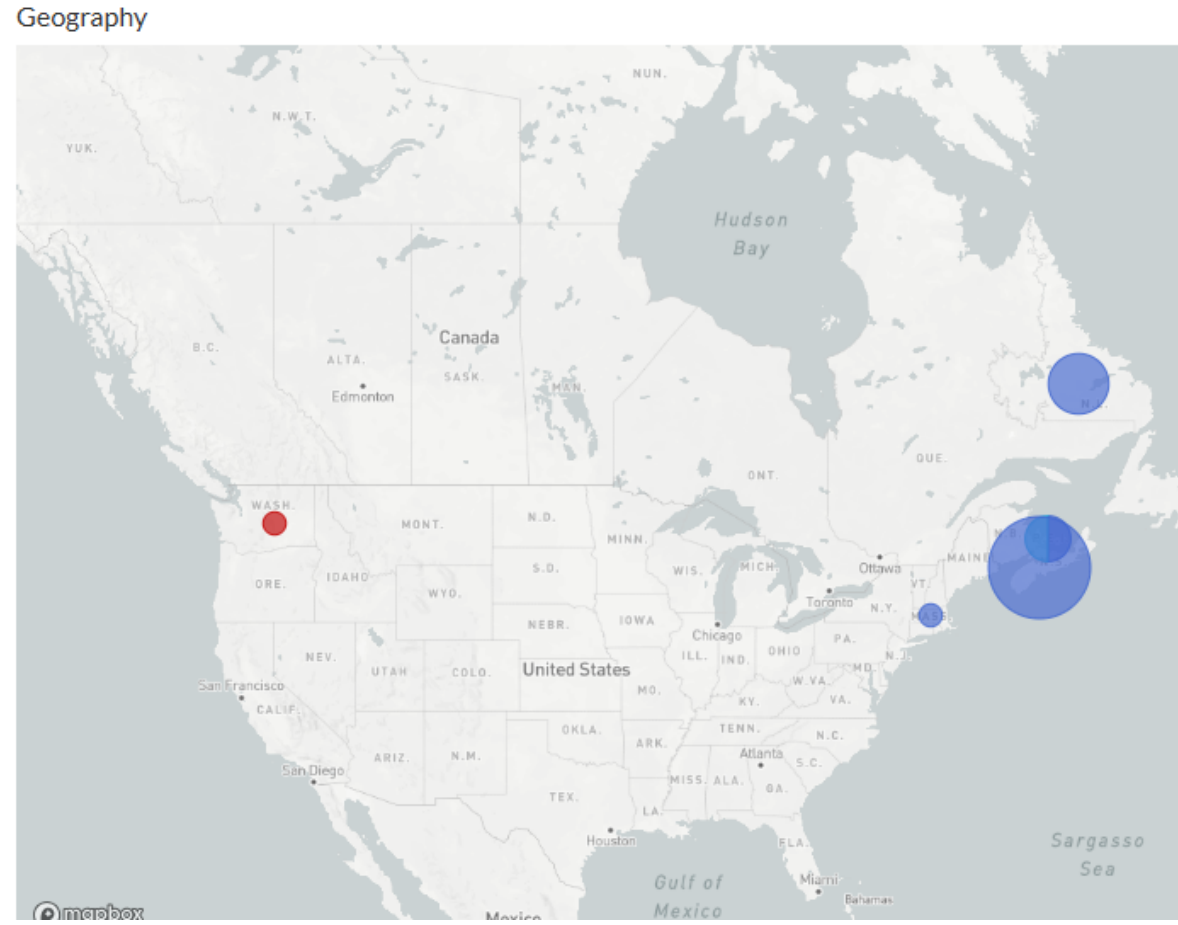
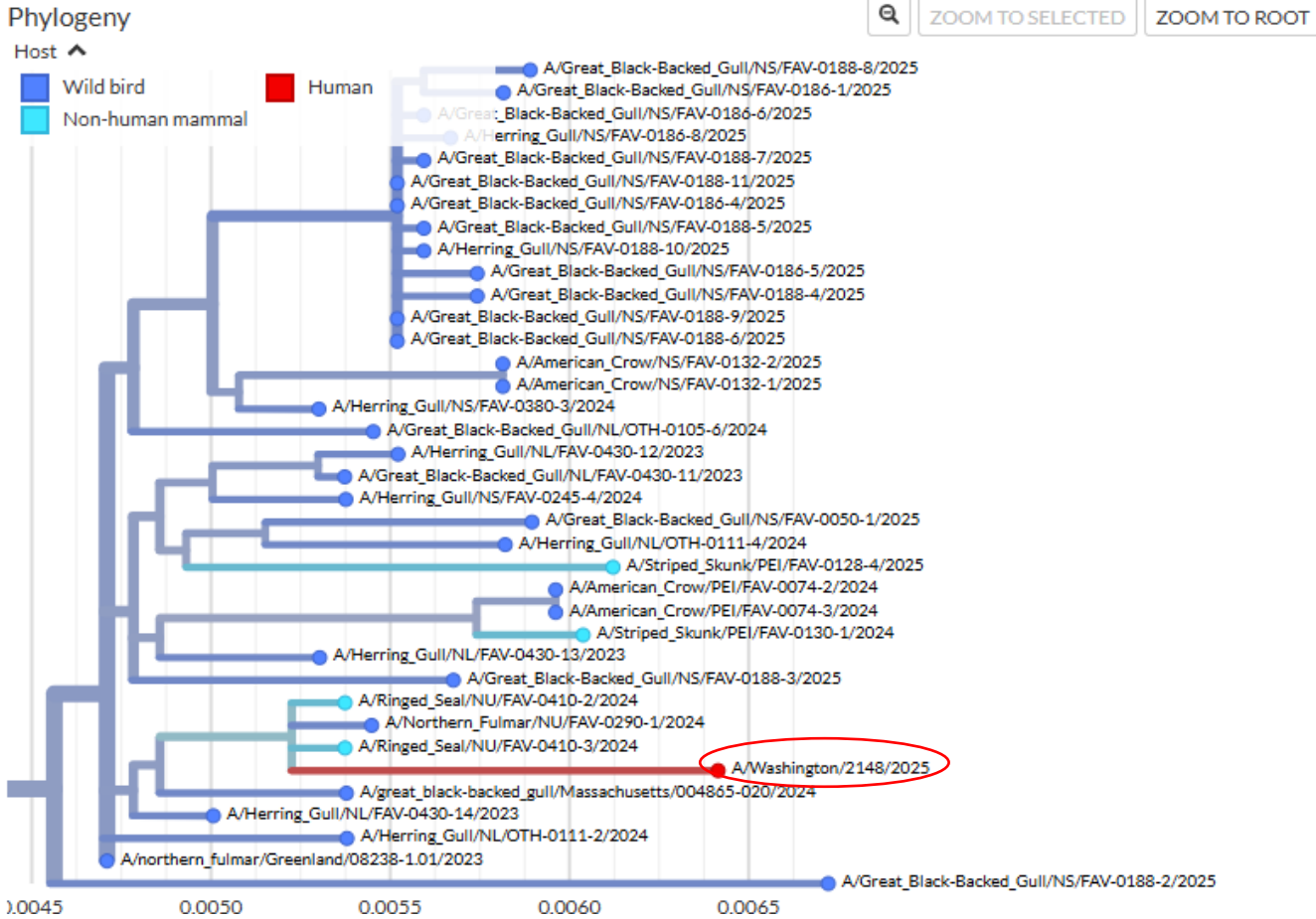


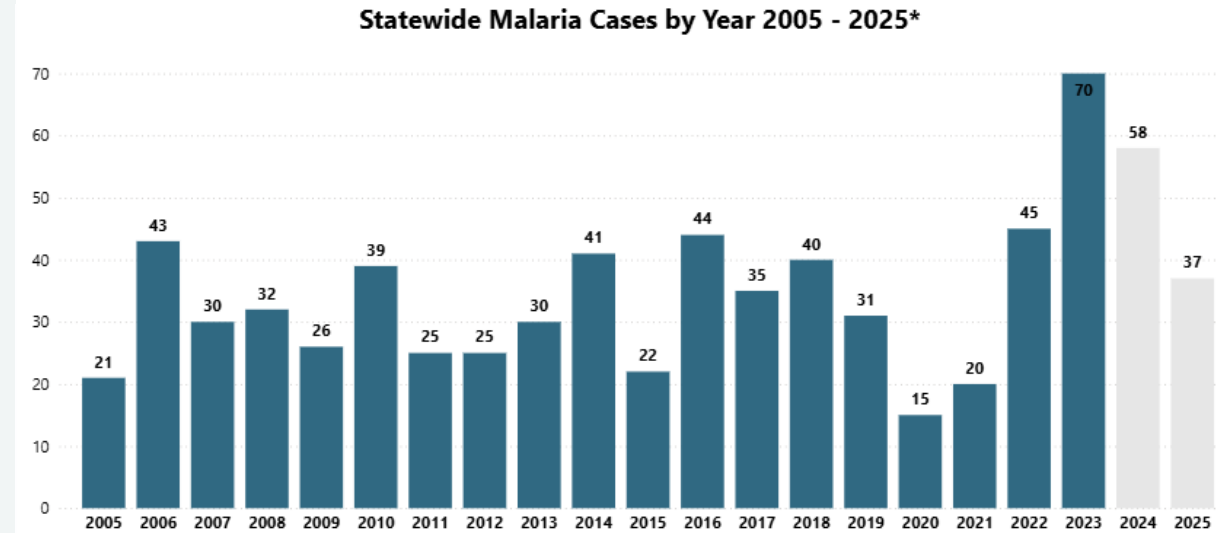
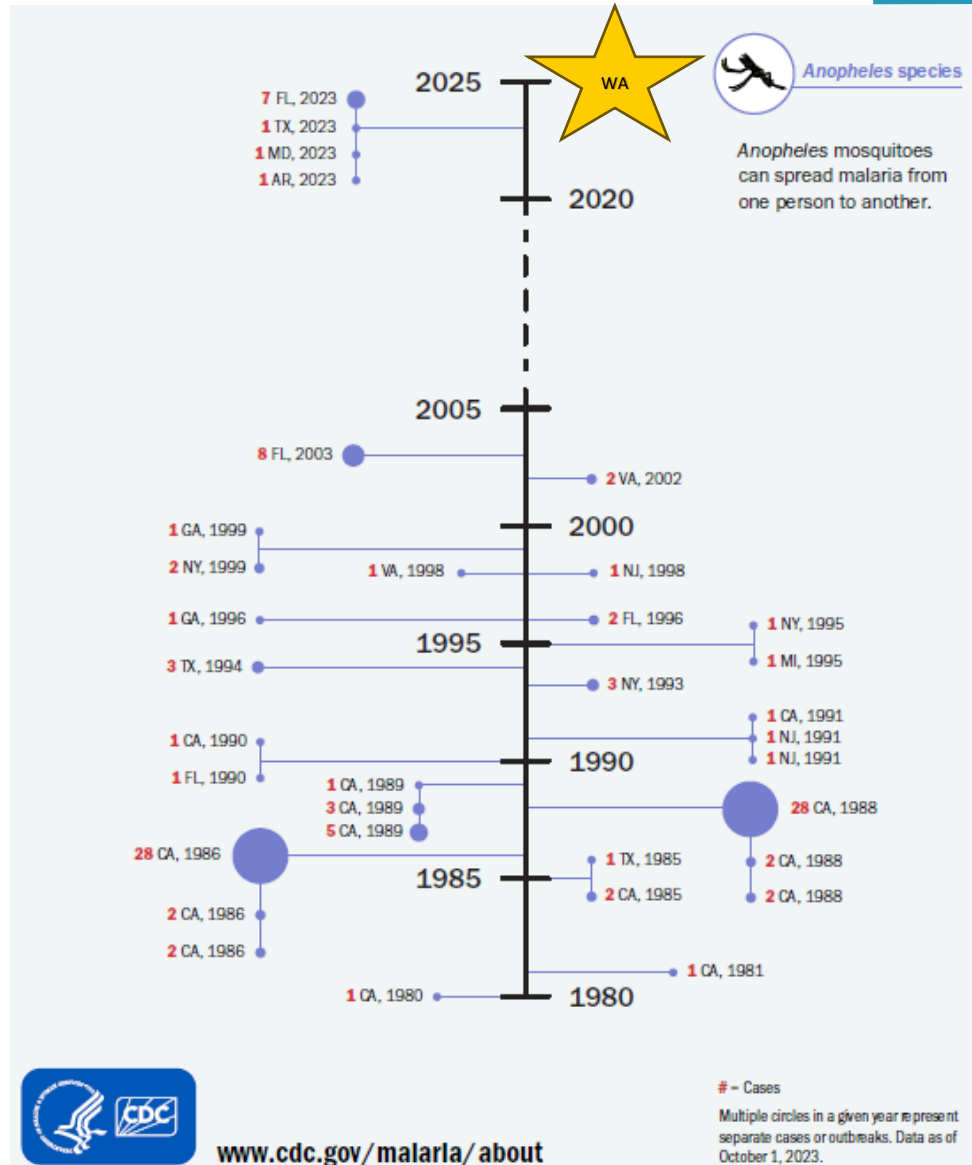
ZOONOTIC AND VECTOR-BORNE
DISEASE UPDATES FROM
WASHINGTON
“THREE SURPRISES”

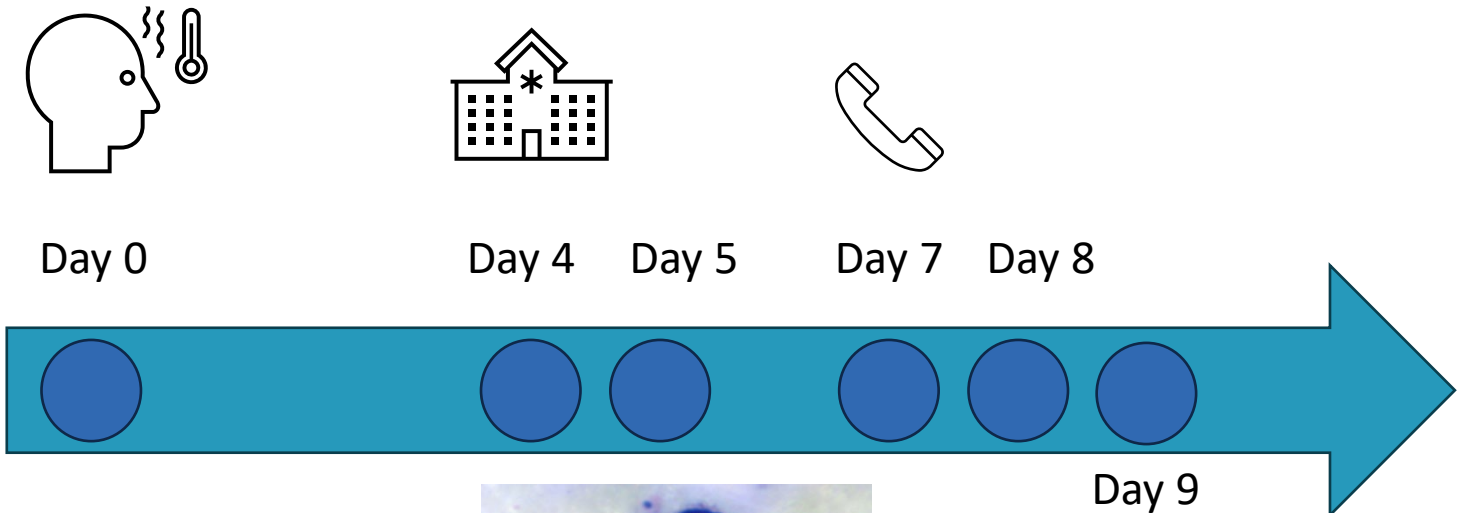
Dr. Hanna Oltean, PhD MPH

1) H5N5



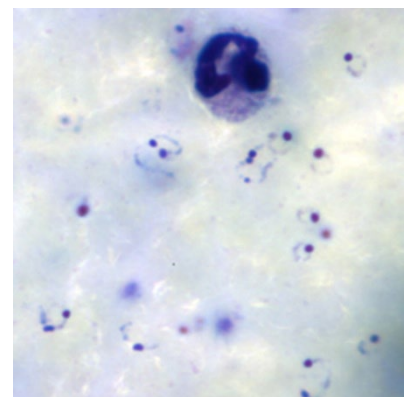
Timeline of Locally Acquired Malaria Outbreaks in the United States, 1980-2025





?

- 1) Unidentified travel, recrudescence
- 2) Local mosquito-borne transmission
- 3) Local bloodborne transmission



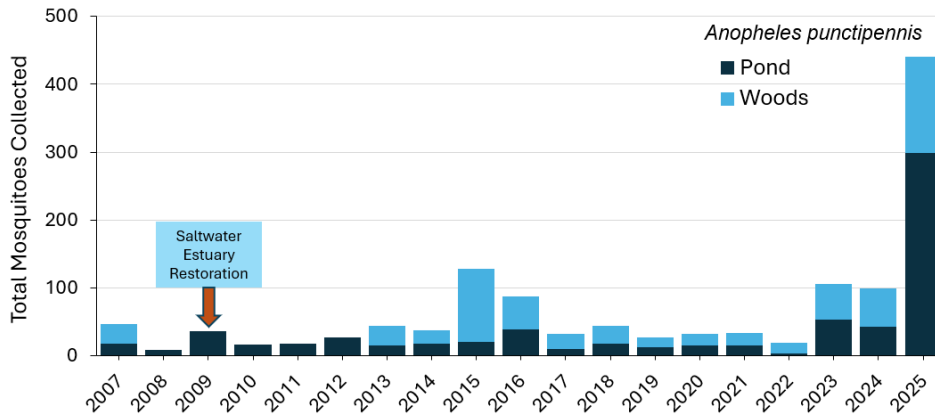
Health Advisory: Possible case of locally acquired malaria in Pierce County

August 6, 2025

Summary: Though the risk remains low, be vigilant for possible cases of malaria and act urgently to diagnose and treat.

2) Local-mosquito borne transmission from an unidentified case was the most likely source.

Annual collections of *Anopheles punctipennis*, NNWR, 2007-2025 (n=1,271).



✓ Unidentified travel, recrudescence

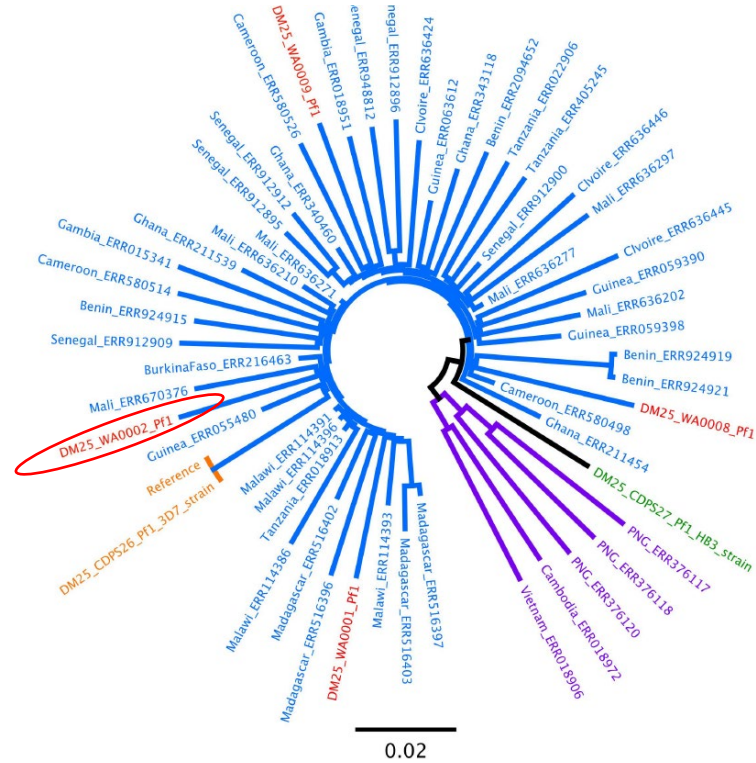
✓ Local mosquito-borne transmission

✓ Local bloodborne transmission

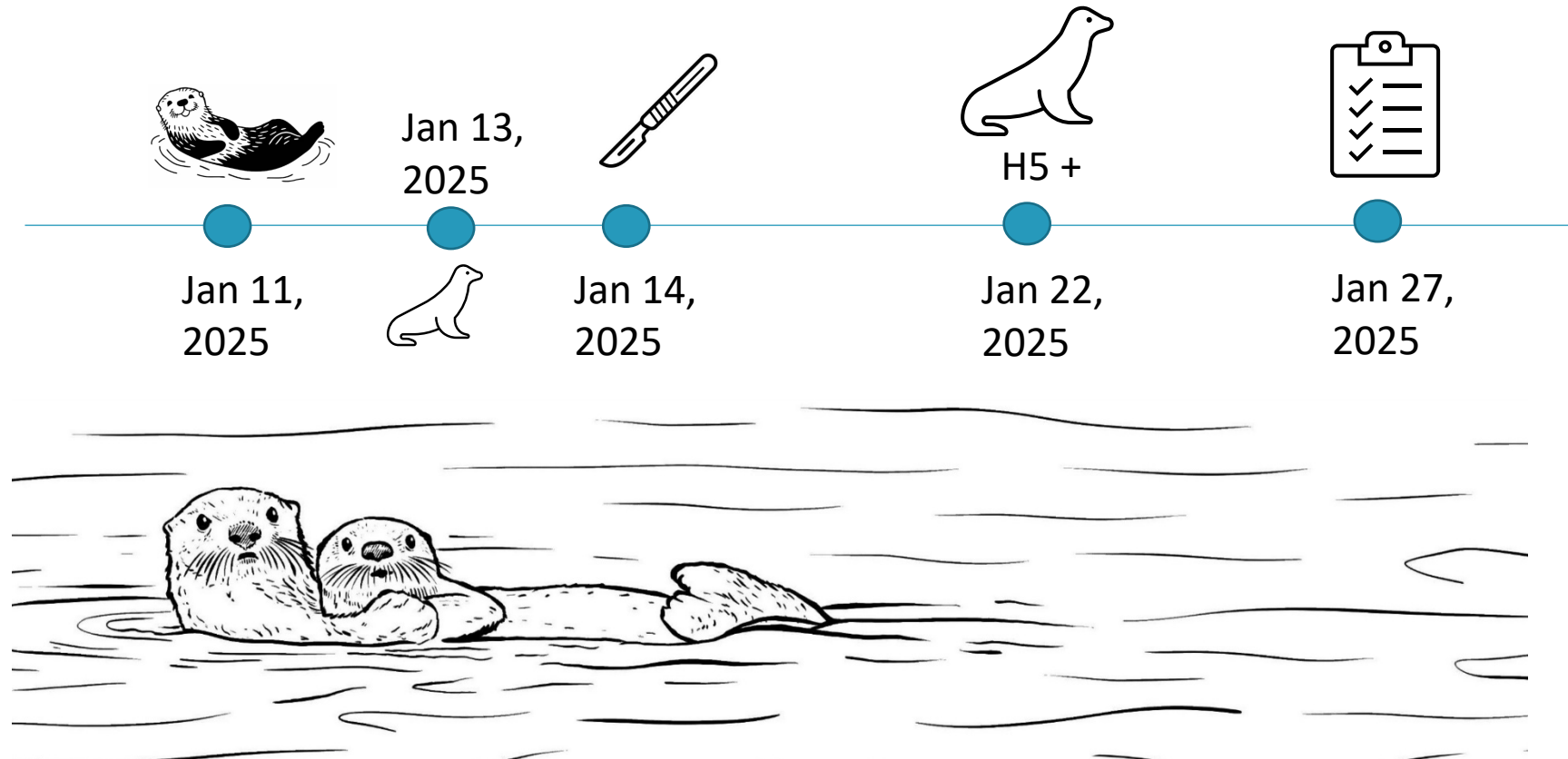
CDC Port Health inquiry
Primary patient interview

Mosquito trapping and testing
Case review/genomic sequencing
Syndromic surveillance

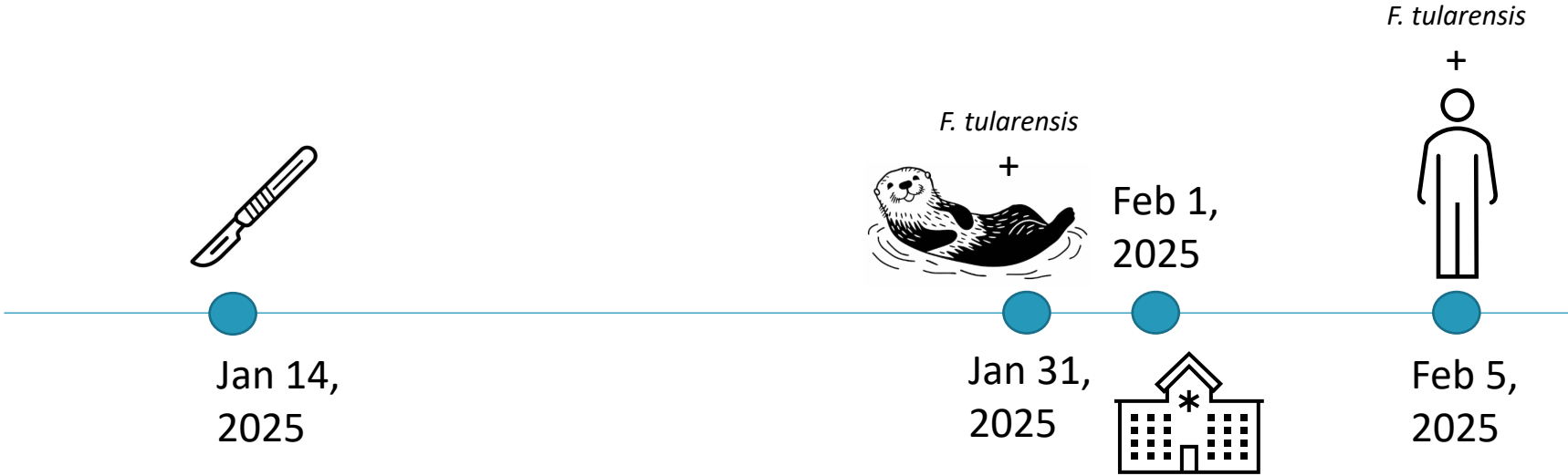
Medical records review
Primary patient interview



Sea otter and harbor seal necropsied; harbor seal tests positive for HPAI H5.



3) Additional laboratory testing revealed unexpected *F. tularensis* in the sea otter.



A site visit to the necropsy laboratory



Findings were disseminated to stranding network partners and staff.



Washington Department of
FISH & WILDLIFE



NOAA
FISHERIES



ATTENTION MEDICAL PERSONNEL

This person lives or works in a wildlife setting and may have been exposed to zoonotic or vector-borne diseases. Please ask about any concerning exposures, travel history, or work duties. Consider additional tests and consulting an infectious disease specialist. These diseases might include:

Lyme, anaplasmosis, babesiosis, relapsing fever, tick paralysis, Rocky Mountain Spotted Fever, West Nile virus, St Louis Encephalitis, hantavirus, leptospirosis, plague, tularemia, rabies, brucellosis, Q fever, salmonellosis, baylisascariasis, echinococcosis, giardiasis, harmful algal blooms, anthrax, histoplasmosis, coccidioidomycosis, psittacosis, avian influenza.

Learn about zoonotic or vector-borne diseases, contact the Washington State Department of Health at:
(206) 418-5500



To find your local health jurisdiction:



Learn about wildlife diseases, or report a sick or dead animal:



Recommendations were co-developed with wildlife partners.

- Experts from **7** agencies/organizations
- Key resources:
 - NIOSH Health Hazard Evaluation conducted at a marine mammal center: <https://www.cdc.gov/niosh/hhe/reports/pdfs/2011-0105-3173.pdf>
 - USGS Field Manual of Wildlife Diseases: <https://www.usgs.gov/centers/nwhc/science/field-manual-wildlife-diseases>
 - National Park Service Safe Work Practices for Employees Handling Wildlife: https://www.nps.gov/subjects/policy/upload/RM-50B_Ch55_Safe_Work_Practices_Handling_Wildlife-508.pdf
 - CDC Brucellosis Reference Guide: <https://www.cdc.gov/brucellosis/media/pdfs/2025/02/brucellosi-reference-guide.pdf>
 - NASPHV Veterinary Standard Precautions: <https://www.nasphv.org/Documents/VeterinaryStandardPrecautions.pdf>
 - Veterinary Information Network Design Considerations for Necropsy Facilities: <https://www.vin.com/apputil/content/defaultadv1.aspx?pId=11125&id=3980804>

- ✓ **General recommendations for zoonotic disease prevention**
 - ✓ Handwashing
 - ✓ Worker training
 - ✓ Reporting animal bites
 - ✓ Preventing tick & mosquito bites
 - ✓ Hazard assessments and PPE use
- ✓ **Specific recommendations for marine mammal field collection and necropsy**
 - ✓ Minimum PPE
 - ✓ Additional PPE when zoonotic disease is suspected
 - ✓ Live animal and carcass transport
 - ✓ Cleaning & disinfection
 - ✓ Laboratory ventilation & engineering controls

“IPC” for Animal Settings

- NASPHV Compendia and guidance documents
 - [Veterinary Standard Precautions for Zoonotic Disease Prevention in Veterinary Personnel](#)
 - [Measures to Prevent Disease Associated with Animals in Public Settings](#)
 - [Compendium of Measures to Prevent Zoonotic Diseases Associated with Non-Traditional Pets](#)
- CDC
 - Guidance specific to certain conditions
 - [Health Hazard Evaluations \(HHEs\) | NIOSH | CDC](#)
- APIC Veterinary Medicine IPC Council
- [CREATE – University of Pennsylvania, School of Veterinary Medicine](#)



Thanks!

WA DOH

Beth Lipton

Alli Black

Pauline Trinh

Lynae Kibiger

Kyle Yomogida

Minden Buswell

Liz Dykstra

Mary Chan

Hannah Schnitzler

Mariah Harper

Jacoby Clark

TPCHD

Jay Miller

Carolyn Otakan

Victoria Beeler

Jeni Nybo

CDC

Kimberly Mace

Alison Ridpath

Seymour Williams

Victoria Seffren

Andreea Bealle

WDFW

Kt Haman

Scott Pearson

Casey Clark

Dyanna Lambourn



To request this document in another format, call 1-800-525-0127. Deaf or hard of hearing customers, please call 711 (Washington Relay) or email doh.information@doh.wa.gov.