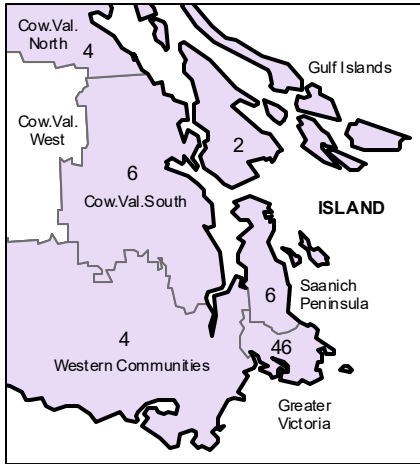


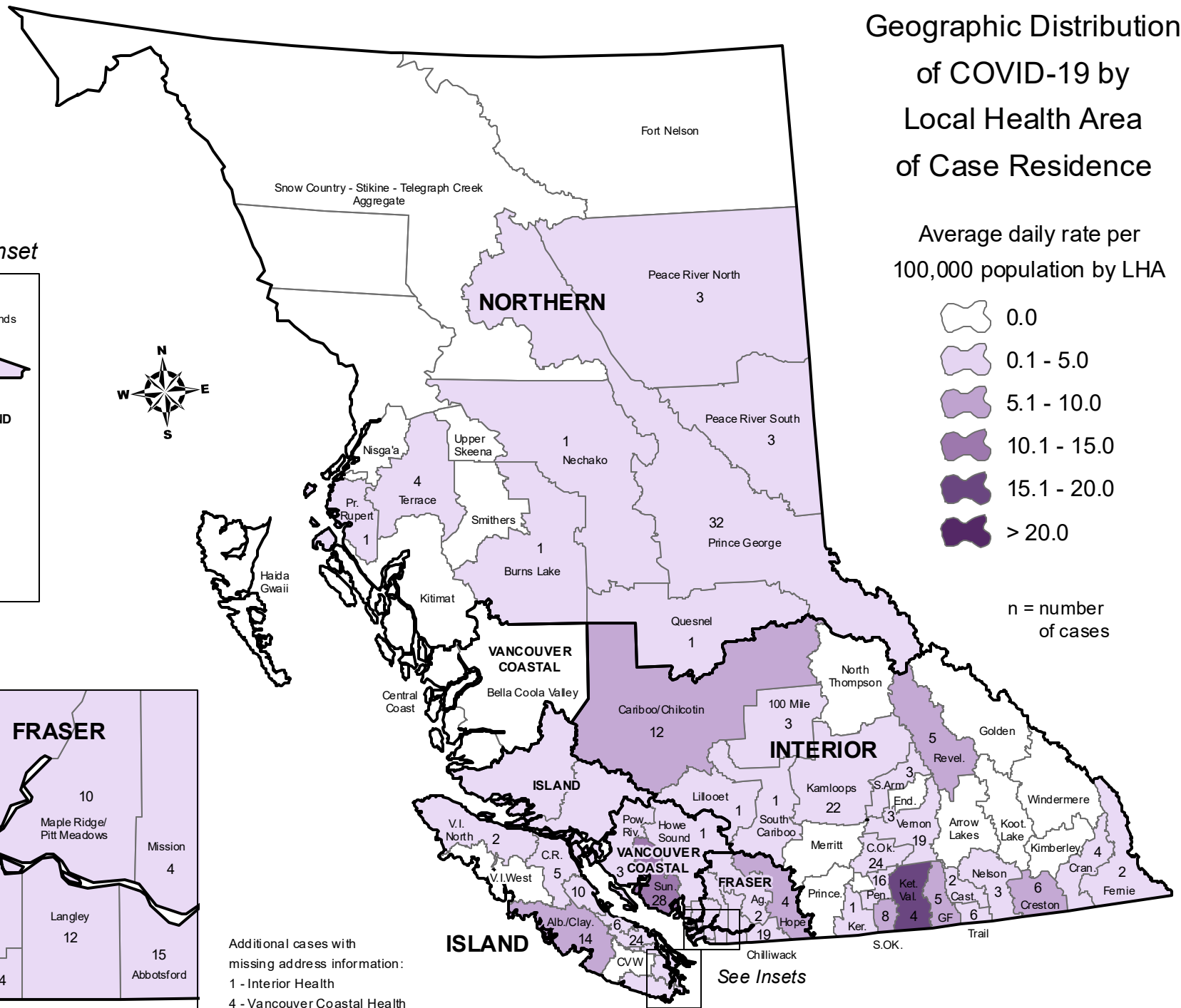
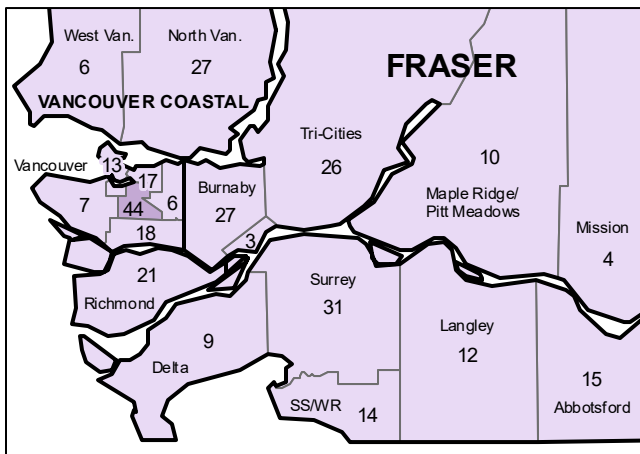
Epi-Week 40 Cases
October 2 to 8, 2022

Geographic Distribution
of COVID-19 by
Local Health Area
of Case Residence

South Vancouver Island Inset



Greater Vancouver Inset



Average daily rate per 100,000 population by LHA



n = number of cases

Additional cases with missing address information:
1 - Interior Health
4 - Vancouver Coastal Health

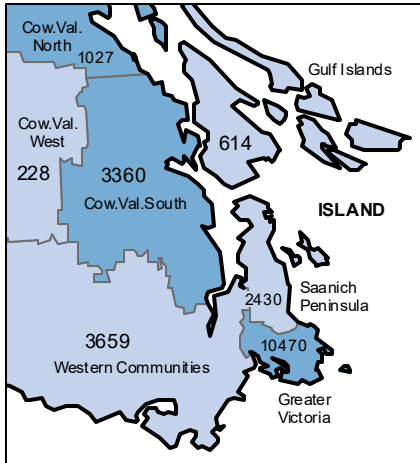
See Insets

Notes: Cases are mapped by location of residence; cases with unknown residence and from out of province are not mapped. Data source: Public Health Reporting Data Warehouse (PHRDW) integrated COVID dataset; we operate in a live database environment and case information from the health authorities are updated as it becomes available. How to interpret the maps: The map illustrates the geographic distribution of reported cases for the most recent epidemiological week (from Sunday to Saturday). Local Health Areas (LHA) with higher rates are illustrated in darker colour shading. The number of reported cases appears in each LHA. Note that the number of cases in the LHA may not represent the location of exposure (e.g. people who acquired disease while traveling or working elsewhere), and that not all COVID-19 infected individuals are tested and reported. Due to changes in testing strategies in BC driven by the Omicron variant, current case counts are an underestimate of the true number of COVID-19 cases. Furthermore, community case rates should be interpreted in the context of community vaccination coverage; you can view this information in the BC COVID-19 Regional Dashboard (<http://www.bccdc.ca/health-professionals/data-reports/covid-19-surveillance-dashboard>). Map created October 13, 2022 by BCCDC for public release.

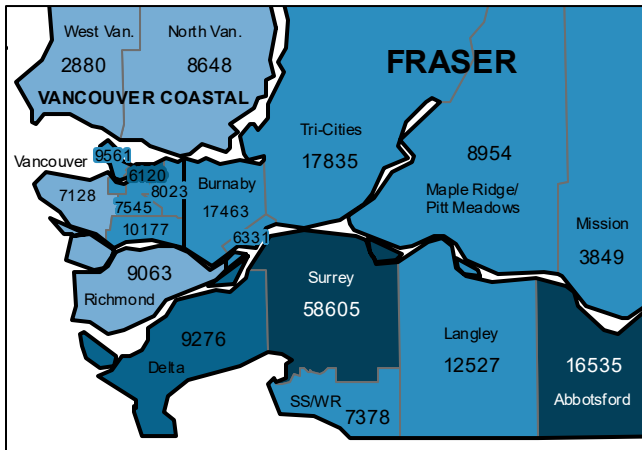
Cumulative Cases

January 2020 to September 2022

South Vancouver Island Inset

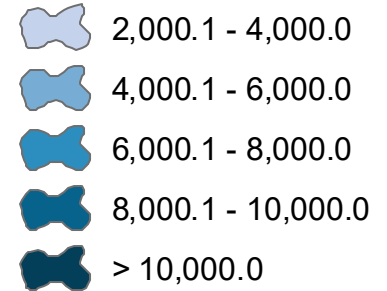


Greater Vancouver Inset

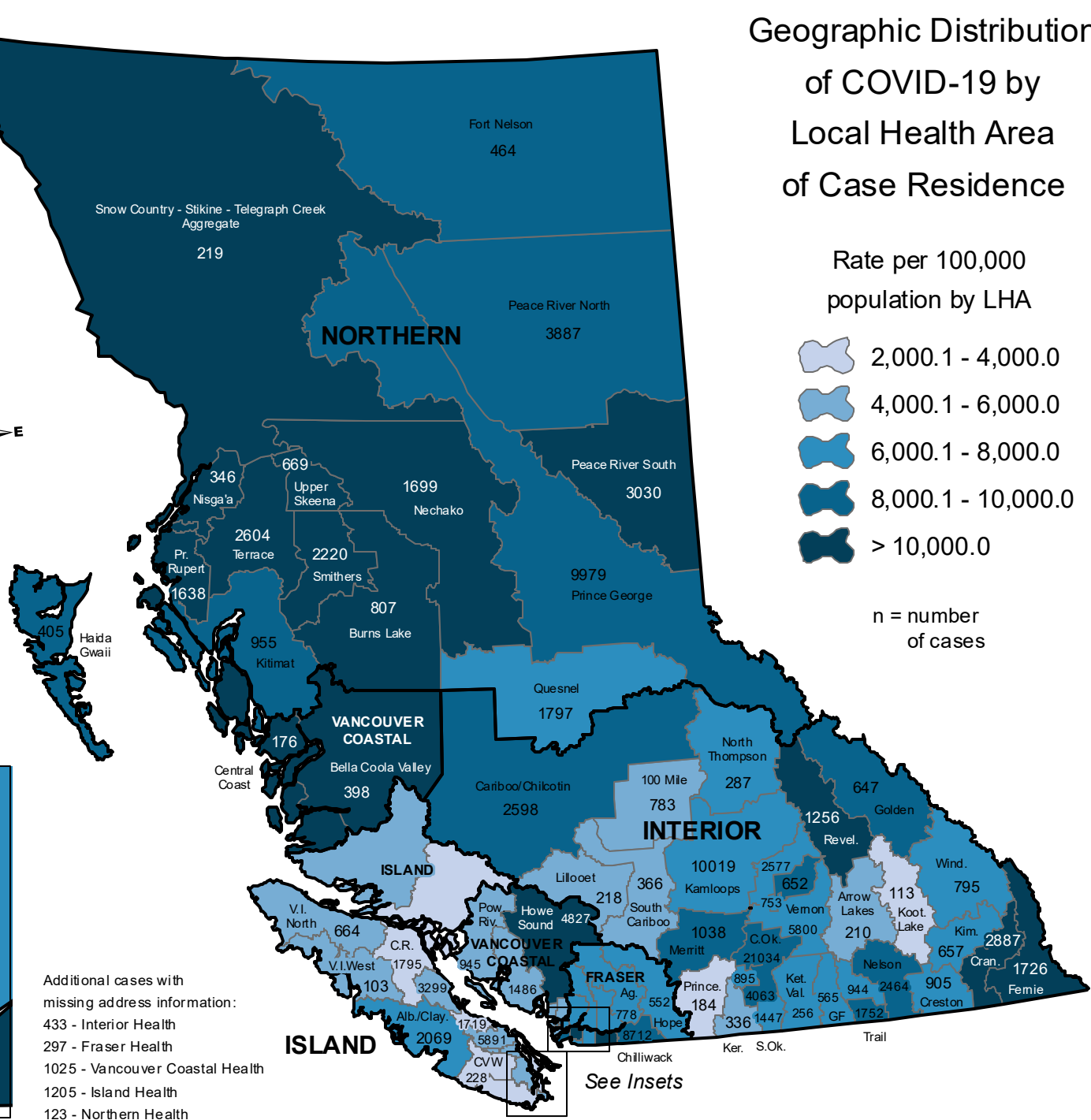


Geographic Distribution of COVID-19 by Local Health Area of Case Residence

Rate per 100,000 population by LHA



n = number of cases



Additional cases with missing address information:
 433 - Interior Health
 297 - Fraser Health
 1025 - Vancouver Coastal Health
 1205 - Island Health
 123 - Northern Health

See Insets

Notes: Cases are mapped by location of residence; cases with unknown residence and from out of province are not mapped. Data source: Public Health Reporting Data Warehouse (PHRDW) integrated COVID dataset; we operate in a live database environment and case information from the health authorities are updated as it becomes available. How to interpret the maps: The map illustrates the geographic distribution of reported cases from January 1, 2020 to September 30, 2022. Local Health Areas (LHA) with higher rates are illustrated in darker colour shading. The number of reported cases appears in each LHA. Note that the number of cases in the LHA may not represent the location of exposure (e.g. people who acquired disease while traveling or working elsewhere), and that not all COVID-19 infected individuals are tested and reported. Due to changes in testing strategies in BC driven by the Omicron variant, current case counts are an underestimate of the true number of COVID-19 cases. Furthermore, community case rates should be interpreted in the context of community vaccination coverage; you can view this information in the BC COVID-19 Regional Dashboard (<http://www.bccdc.ca/health-professionals/data-reports/covid-19-surveillance-dashboard>). Map created October 6, 2022 by BCCDC for public release.