



BC Centre for Disease Control



*Excellence
Program*

*2000 Silver
Level Recipient*

HIV / AIDS UPDATE

Annual 2001

British Columbia Centre for Disease Control Society
STD/AIDS Control

prepared by

Robbie G. MacDougall, Research Officer
Michael L. Rekart, MD, FRCPC, DTM&H, Director
Linda Knowles, BSN Nursing Administrator
Daphne Spencer, RN, HIVSS
Corrine Williams, RN, HIVSS

Table of Contents

	Page
AIDS in British Columbia	3
AIDS Case Reports by:	
Table 1.1 Year of Diagnosis, 1983 to 2001	4
Graph 1.1 Year of Diagnosis, 1990 to 2001	4
Table 1.2 Age and Year of Diagnosis - MALES, 1996 to 2001	5
Table 1.3 Age and Year of Diagnosis - FEMALES, 1996 to 2001	5
Table 1.4 Age and Year of Diagnosis - TOTAL, 1996 to 2001	6
Graph 1.2 Gender and Year of Diagnosis, 1990 to 2001	6
Graph 1.3 Age and Year of Diagnosis, 1990 to 2001	7
Graph 1.4 Risk Category and Year of Diagnosis, 1990 to 2001	7
Table 1.5 Risk Category, Gender and Year of Diagnosis, 1996 to 2001	8
Table 1.6 Ethnicity, Gender and Year of Diagnosis, 1996 to 2001	9
Table 1.7 Health Region and Year of Diagnosis, 1996 to 2001	10
Table 1.7 Health Region and Year of Diagnosis, 1996 to 2001 (continued).....	11
Table 1.8 First Disease Indicative of AIDS and Year of Diagnosis, 1983 to 2001	12
Graph 1.5 Year of Diagnosis for BC and Canada, 1991 to 2001	13
Graph 1.6 Age and Gender for BC, 2001	14
Graph 1.7 Health Region for BC, 2001	15
HIV In British Columbia	16
Persons Testing Newly Positive for HIV by:	
Table 2.1 Year of Diagnosis, 1985 to 2001	17
Graph 2.1 Year of Diagnosis, 1991 to 2001	18
Table 2.2 Age and Year - MALES, 1996 to 2001	19
Table 2.3 Age and Year - FEMALES, 1996 to 2001	20
Table 2.4 Age and Year - UNKNOWN, 1996 to 2001	21
Graph 2.2 Gender and Year, 1991 to 2001	22
Table 2.5 Age and Year - TOTAL, 1996 to 2001	23
Graph 2.3 Age and Year, 1991 to 2001	24
Graph 2.4 Risk Category and Year, 1991 to 2001	25
Table 2.6 Risk Category and Year - MALES, 1996 to 2001	26
Table 2.7 Risk Category and Year - FEMALES, 1996 to 2001	27
Table 2.8 Risk Category and Year - UNKNOWN, 1996 to 2001	28
Table 2.9 Risk Category and Year - TOTAL, 1996 to 2001	29
Table 2.10 Ethnicity and Year - MALES, 1997 to 2001	30
Table 2.11 Ethnicity and Year - FEMALES, 1997 to 2001	31
Graph 2.5 Ethnicity and Year - MALES, 1996 to 2001	32
Graph 2.6 Ethnicity and Year - FEMALES, 1996 to 2001	33
Table 2.12 Ethnicity and Year - UNKNOWN, 1996 to 2001	34
Table 2.13 Ethnicity and Year - TOTAL, 1996 to 2001	35
Table 2.14 Health Region and Year, 1996 to 2001	36
Table 2.15 Specimen Source and Year, 1996 to 2001	38
Table 2.16 Maternal Antibody Positive Versus True HIV Infection, 1992 to 2001 .	39
Table 2.17 Prenatal Screening, 1996 to 2001	39
Graph 2.7 HIV by Year for BC, 1990 to 2001	40
Graph 2.8 HIV by AGE and Gender, 2001	41
Graph 2.9 HIV by Health Region, 2001	42

AIDS IN BRITISH COLUMBIA

Prior to 1997, AIDS case reports were electronically compiled courtesy of the Vancouver Health Department. We'd like to take this opportunity to thank the Vancouver Health Department for their assistance with the AIDS data. Their cooperation was essential to the preparation of past reports.

To avoid duplicate data entry and to improve timelines, we have decided to use AIDS data entered by the Division of HIV/AIDS Surveillance, Bureau of HIV/AIDS and STD, Laboratory Centre for Disease Control, Health Protection Branch, Health Canada.

Any potential discrepancies between reports from the first quarter of 1997 onward and previous AIDS Update reports may be attributed to the transition from the use of the Vancouver Health Department's AIDS data to the use of Health Canada's AIDS data.

Detailed pre-1994 statistics are not provided in this semi-annual report due to page limitations but are available upon request. Please forward your request to the STD/AIDS Resource Centre by telephoning (604) 660-2090, faxing (604) 775-0808, or writing to:

British Columbia Centre for Disease Control Society
Division of STD/AIDS Control
STD/AIDS Resource Centre
655 West 12th Avenue
Vancouver BC V5Z 4R4

Acknowledgements:

Division of HIV/AIDS Surveillance, Bureau of HIV/AIDS and STD, Laboratory Centre for Disease Control, Health Protection Branch, Health Canada, for allowing us the use of their AIDS data.

Physicians, healthcare providers, and public health staff in British Columbia for taking the time and effort to complete and submit their AIDS case report forms.

Dr. Robert Hogg and Benita Yip from the BC Centre for Excellence in HIV/AIDS for their assistance in improving the reporting of new AIDS cases.

Table 1.1
AIDS Case Reports by YEAR OF DIAGNOSIS, 1983 to 2001

Year of Diagnosis	Cases Reported	Rate	Cumulative Cases
1983	9	0.31	9
1984	29	0.98	38
1985	61	2.04	99
1986	106	3.53	205
1987	135	4.43	340
1988	175	5.62	515
1989	223	6.97	738
1990	225	6.84	963
1991	266	7.89	1,229
1992	296	8.53	1,525
1993	307	8.60	1,832
1994	305	8.28	2,137
1995	264	6.98	2,401
1996	177	4.56	2,578
1997	151	3.81	2,729
1998	149	3.72	2,878
1999	120	2.97	2,998
2000	109	2.68	3,107
2001	38	0.93	3,145
TOTAL:	3,145		

2001 figures are year-to-date

Graph 1.1
AIDS Case Reports by YEAR OF DIAGNOSIS, 1990 to 2001

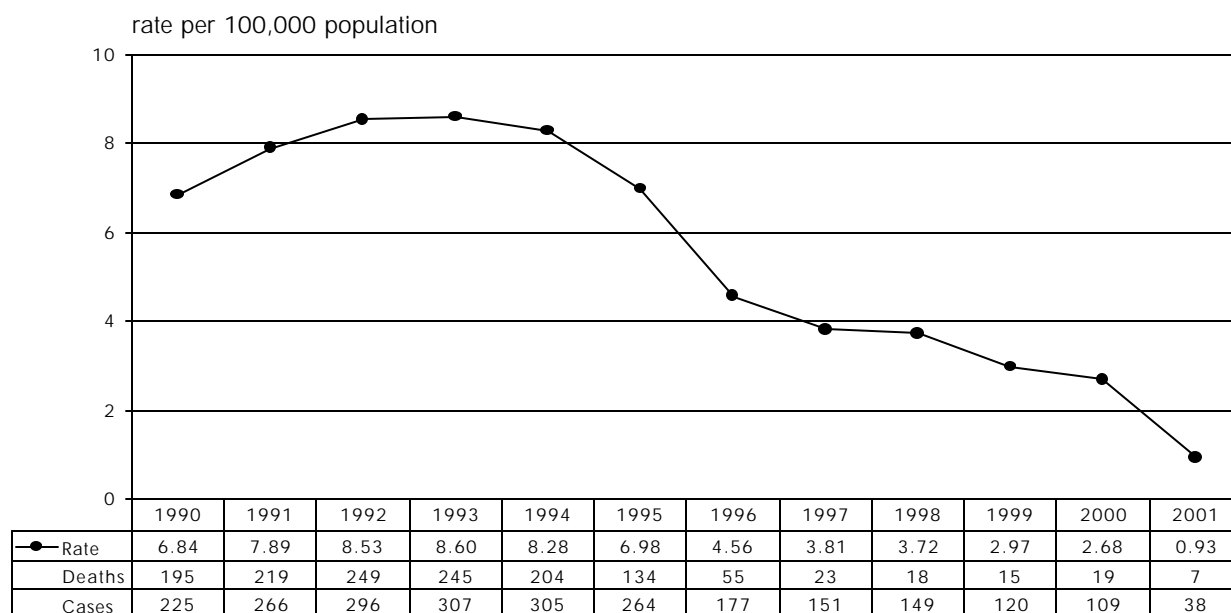


Table 1.2

AIDS Case Reports by AGE and YEAR OF DIAGNOSIS - MALES, 1996 to 2001

Age	AIDS	1996	1997	1998	1999	2000	2001	TOTAL
<15	cases	1	1	1	1	1	1	12
	rate	0.26	0.26	0.26	0.26	0.26	0.27	
15 to 19	cases	-	-	-	-	-	-	8
	rate							
20 to 29	cases	15	14	13	4	5	-	375
	rate	5.30	4.93	4.60	1.43	1.83		
30 to 39	cases	82	52	46	44	42	13	1,321
	rate	24.02	15.16	13.49	13.00	12.65	3.95	
40 to 49	cases	45	39	49	31	26	9	894
	rate	14.74	12.43	15.26	9.45	7.78	2.65	
50+	cases	16	14	19	16	22	10	330
	rate	3.28	2.76	3.62	2.95	3.91	1.73	
unknown	cases	-	-	-	-	-	-	-
total:	cases	159	120	128	96	96	33	2,940
	rate	8.22	6.09	6.42	4.77	4.75	1.62	

Table 1.3

AIDS Case Reports by AGE and YEAR OF DIAGNOSIS - FEMALES, 1996 to 2001

Age	AIDS	1996	1997	1998	1999	2000	2001	TOTAL
<15	cases	-	2	-	-	-	-	6
	rate		0.54					
15 to 19	cases	1	-	-	-	-	-	1
	rate	0.81						
20 to 29	cases	3	3	3	1	2	3	44
	rate	1.10	1.09	1.09	0.37	0.74	1.11	
30 to 39	cases	9	19	12	12	2	-	89
	rate	2.68	5.64	3.57	3.59	0.61		
40 to 49	cases	3	4	5	7	5	-	39
	rate	0.99	1.28	1.56	2.13	1.49		
50+	cases	2	2	1	2	-	-	14
	rate	0.37	0.35	0.17	0.33			
unknown	cases							-
total:	cases	18	30	21	22	9	3	193
	rate	0.92	1.51	1.04	1.08	0.44	0.15	

2001 figures are year-to-date

RATE is per 100,000 population.

TOTAL column to the far right is cumulative from 1983 to year-to-date 2001

Table 1.4
AIDS Case Reports by AGE and YEAR OF DIAGNOSIS - TOTAL, 1996 to 2001

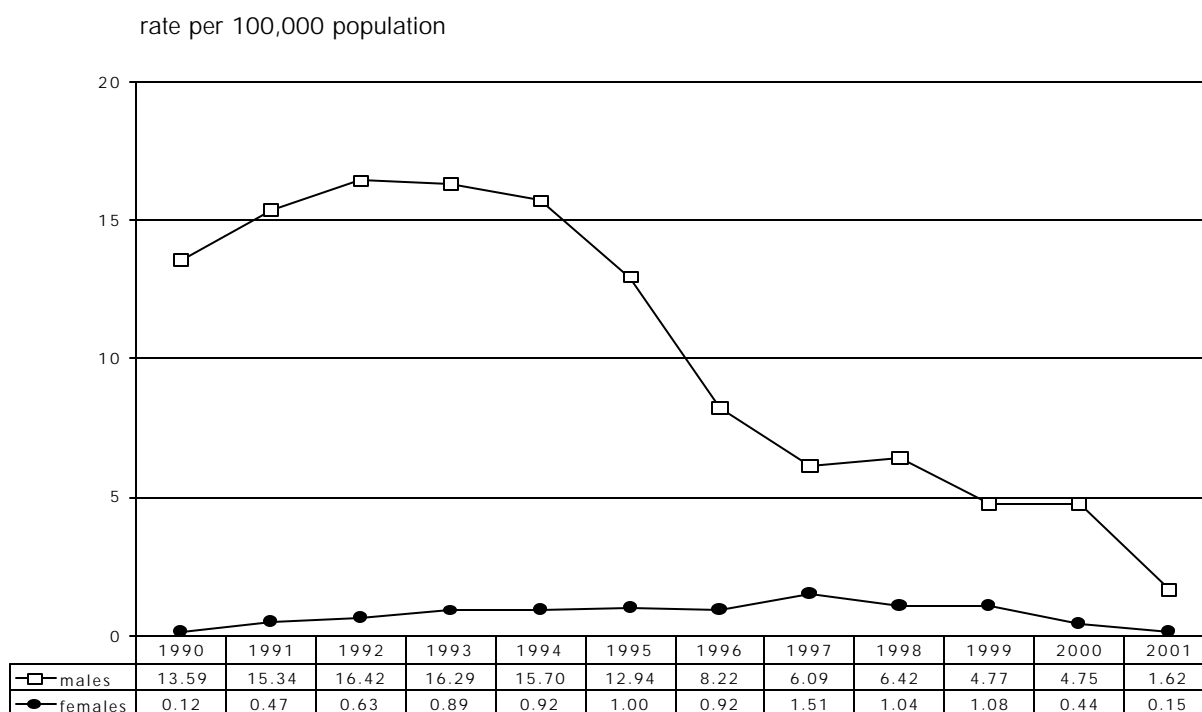
Age	AIDS	1996	1997	1998	1999	2000	2001	TOTAL
<15	cases	1	3	1	1	1	1	18
	rate	0.13	0.40	0.13	0.13	0.14	0.14	
15 to 19	cases	1	-	-	-	-	-	9
	rate	0.39						
20 to 29	cases	18	17	16	5	7	3	419
	rate	3.23	3.04	2.87	0.91	1.29	0.55	
30 to 39	cases	91	71	58	56	44	13	1,410
	rate	13.45	10.44	8.57	8.32	6.66	1.98	
40 to 49	cases	48	43	54	38	31	9	933
	rate	7.88	6.86	8.41	5.79	4.63	1.32	
50+	cases	18	16	20	18	22	10	344
	rate	1.74	1.49	1.80	1.57	1.85	0.82	
unknown	cases	-	1	-	2	4	2	12
total:	cases	177	151	149	120	109	38	3,145
	rate	4.56	3.81	3.72	2.97	2.68	0.93	

RATE is per 100,000 population.

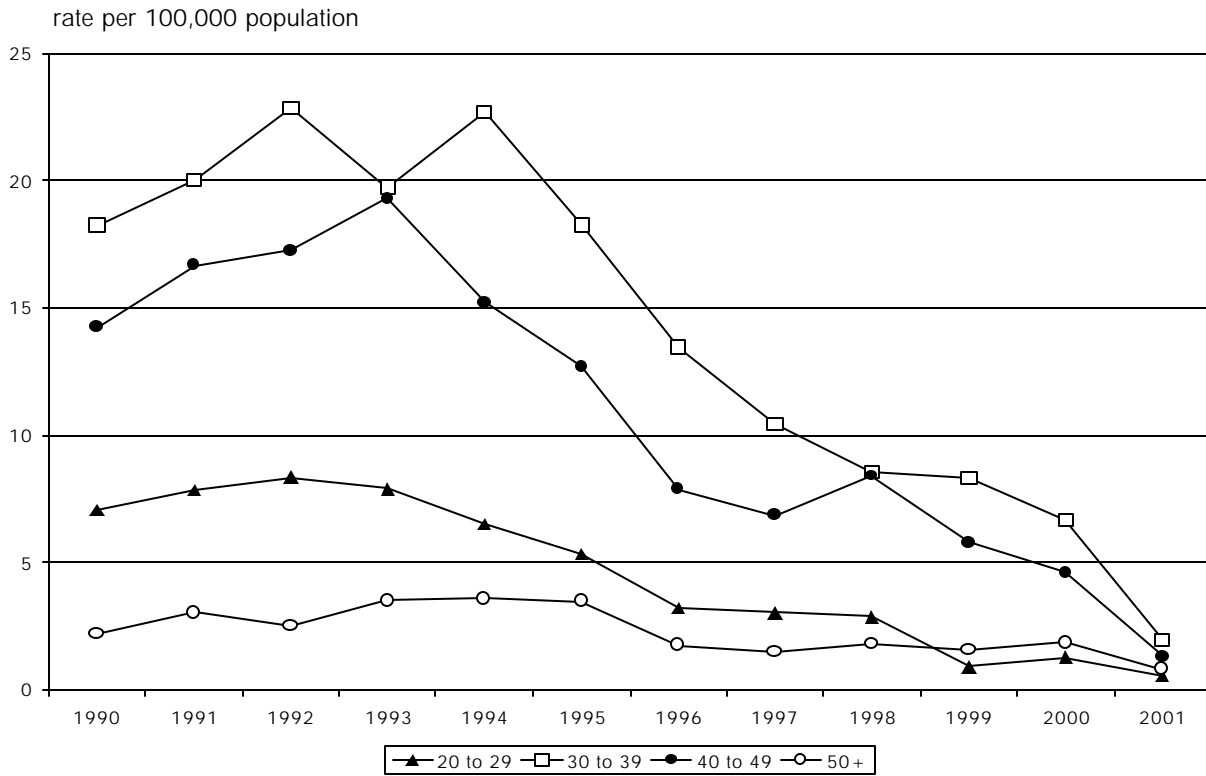
TOTAL column to the far right is cumulative from 1983 to year-to-date 2001.

2 Transgender AIDS case reports: 1997 and 1999.

Graph 1.2
AIDS Case Reports by GENDER and YEAR OF DIAGNOSIS, 1990 to 2001



Graph 1.3
AIDS Case Reports by AGE and YEAR OF DIAGNOSIS, 1990 to 2001



Graph 1.4
AIDS Case Reports by RISK CATEGORY AND YEAR OF DIAGNOSIS, 1990 to 2001

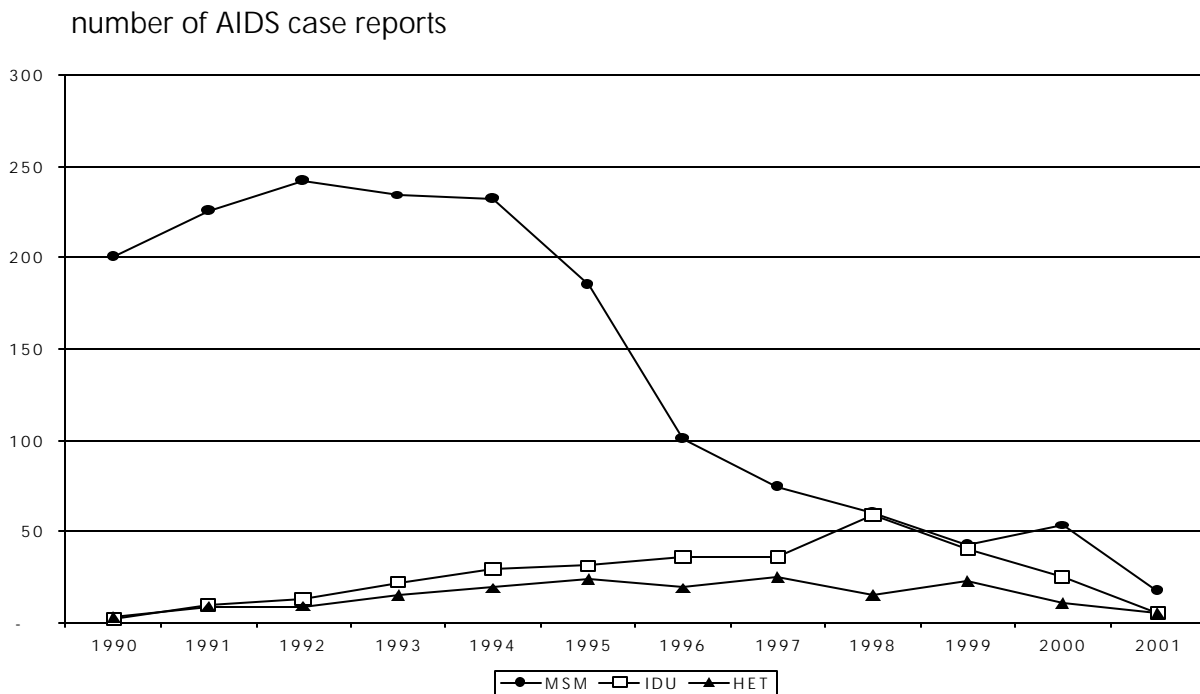


Table 1.5

AIDS Case Reports by RISK CATEGORY, GENDER, and YEAR OF DIAGNOSIS, 1996 to 2001

Risk Category	AIDS	1996	1997	1998	1999	2000	2001	TOTAL
MSM or WSW	males	101	74	60	43	53	17	2,328
	females	-	-	-	-	-	-	
	total	101	74	60	43	53	17	2,328
MSM/IDU or WSW/IDU	males	14	5	1	8	4	1	147
	females	-	-	-	-	-	-	
	total	14	65	1	8	4	1	207
IDU	males	27	20	43	29	19	5	219
	females	9	16	16	11	6	-	95
	total	36	36	59	40	25	5	314
heterosexual contact	males	11	15	13	13	8	2	112
	females	8	10	3	10	3	3	76
	total	19	25	16	23	11	5	188
hemophiliac	males	2	1	-	-	-	-	24
	females	-	-	-	-	-	-	2
	total	2	1					26
blood/BP recipient	males	-	-	-	-	1	-	11
	females	-	-	1	-	-	-	9
	total			1		1		20
perinatal	males	1	1	1	-	-	-	8
	females	-	1	-	-	-	-	5
	total	1	2	1				13
unknown*	males	3	4	10	3	11	8	91
	females	1	3	1	1	-	-	6
	total	4	8	11	6	15	10	109
total:	males	159	120	128	96	96	33	2,940
	females	18	30	21	22	9	3	193
	total	177	151	149	120	109	38	3,145

TOTAL column to the far right is cumulative from 1983 to year-to-date 2001.
2 Transgender AIDS case reports: 1997 and 1999.

MSM - men who have sex with men
WSW - women who have sex with women
IDU - injection drug user
blood/BP recipient - blood or blood product recipient
unknown* - total contains unknown gender

Table 1.6
**AIDS Case Reports by ETHNICITY, GENDER and YEAR OF DIAGNOSIS,
 1996 to 2001**

Ethnicity	AIDS	1996	1997	1998	1999	2000	2001	TOTAL
Caucasian	males	129	95	87	70	79	28	2,342
	females	14	13	10	9	4	2	109
	total	143	108	97	79	83	30	2,451
First Nations	males	15	12	18	14	8	1	143
	females	4	12	10	8	3	-	48
	total	19	24	28	22	11	1	191
Asian	males	3	3	3	2	2	-	44
	females	-	-	-	1	-	-	4
	total	3	3	3	3	2	-	48
South Asian	males	1	1	3	3	1	1	28
	females	-	-	-	-	-	-	2
	total	1	1	3	3	1	1	30
Inuit	males	-	1	-	-	-	1	4
	females	-	-	-	-	-	-	1
	total	-	1	-	-	-	1	5
Metis	males	-	4	1	-	-	-	8
	females	-	-	-	-	-	-	-
	total	-	4	1	-	-	-	8
Black	males	6	3	4	4	2	-	45
	females	-	3	-	3	2	-	15
	total	6	6	4	7	4	-	60
Hispanic	males	2	-	4	2	2	1	36
	females	-	1	-	-	-	1	4
	total	2	1	4	2	2	2	40
Arab/West Asian	males	1	-	1	-	1	-	5
	females	-	-	-	-	-	-	-
	total	1	-	1	-	1	-	5
other	males	1	-	3	-	-	-	21
	females	-	-	-	1	-	-	2
	total	1	-	3	1	-	-	23
unknown*	males	1	1	4	1	1	1	264
	females	-	1	1	-	-	-	8
	total	1	3	5	3	5	3	284
total:	males	159	120	128	96	96	33	2,940
	females	18	30	21	22	9	3	193
	total	177	151	149	120	109	38	3,145

TOTAL column to the far right is cumulative from 1983 to year-to-date 2001.

2 Transgender AIDS case reports: 1997 and 1999.

unknown*- total contains unknown gender

Table 1.7

AIDS Case Reports by HEALTH REGION* and YEAR OF DIAGNOSIS, 1996 to 2001

Health Region	AIDS	1996	1997	1998	1999	2000	2001	TOTAL
Burnaby	cases	2	5	3	5	2	3	73
	rate	1.07	2.65	1.58	2.61	1.04	1.55	
Capital	cases	25	3	2	2	6	1	225
	rate	7.54	0.90	0.60	0.60	1.79	0.30	
Cariboo	cases	1	-	-	1	2	-	8
	rate	1.36			1.31	2.61		
Central Fraser Valley	cases							15
	rate							
Central Vancouver Island	cases	2	6	5	-	3	2	51
	rate	0.86	2.51	2.06		1.23	0.81	
Coast Garibaldi	cases	-	1	1	2	3	2	26
	rate		1.31	1.28	2.51	3.76	2.49	
East Kootenay	cases	1	-	-	-	-	1	9
	rate	1.26					1.19	
Fraser Valley	cases	1	3	4	-	1	-	37
	rate	0.43	1.27	1.67		0.41		
Kootenay Boundary	cases	3	2	-	-	-	-	13
	rate	3.68	2.43					
North Okanagan	cases	-	-	3	-	1	-	7
	rate			2.54		0.84		
North Shore	cases	3	6	4	6	5	1	105
	rate	1.70	3.36	2.22	3.32	2.76	0.56	
North West	cases	-	1	-	2	1	-	11
	rate		1.09		2.19	1.10		

RATE is per 100,000 population.

TOTAL column to far right is cumulative from 1983 to year-to-date 2001.

CENTRAL FRASER VALLEY - As of 1996, any AIDS case reports, by year of diagnosis, that fall within the areas previously served by Central Fraser Valley Health Unit will now be designated to the following health regions: Mission to Fraser Valley; Maple Ridge and Pitt Meadows to Simon Fraser; and Langley to South Fraser.

* HEALTH REGION - An AIDS case report, by year of diagnosis, is designated to the appropriate HEALTH REGION according to the patient's place of residence at the time of his/her diagnosis of AIDS (i.e. first disease indicative of AIDS).

Table 1.7 (continued)

AIDS Case Reports by HEALTH REGION* and YEAR OF DIAGNOSIS, 1996 to 2001

Health Region	AIDS	1996	1997	1998	1999	2000	2001	TOTAL
Northern Interior	cases	5	6	3	2	-	2	26
	rate	3.87	4.54	2.25	1.50		1.49	
Okanagan Similkameen	cases	1	3	1	5	3	2	45
	rate	0.45	1.33	0.43	2.16	1.30	0.84	
Peace Liard	cases	-	-	-	-	-	-	8
	rate							
Richmond	cases	1	-	1	2	2	-	37
	rate	0.65		0.62	1.21	1.21		
Simon Fraser	cases	3	5	1	5	3	3	79
	rate	0.99	1.61	0.32	1.55	0.93	0.93	
South Fraser	cases	5	3	4	3	7	2	103
	rate	0.92	0.54	0.71	0.52	1.22	0.35	
Thompson	cases	1	2	5	-	-	-	20
	rate	0.77	1.50	3.69				
Upper Island	cases	-	1	1	1	1	-	16
	rate		0.82	0.81	0.81	0.81		
Vancouver	cases	118	89	92	66	55	15	2,119
	rate	21.60	16.00	16.32	11.56	9.64	2.56	
unknown	cases	5	15	19	18	14	4	127
	rate							
total:	cases	177	151	149	120	109	38	3,145
	rate	4.56	3.81	3.72	2.97	2.69	0.93	

RATE is per 100,000 population.

TOTAL column to far right is cumulative from 1983 to year-to-date 2001.

* HEALTH REGION - An AIDS case report, by year of diagnosis, is designated to the appropriate HEALTH REGION according to the patient's place of residence at the time of his/her diagnosis of AIDS (i.e. first disease Indicative of AIDS).

Table 1.8

AIDS Case Reports by FIRST DISEASE INDICATIVE OF AIDS and YEAR OF DIAGNOSIS, 1983 to 2001

Year of Diagnosis	KS	PCP	OI	OM	HIV WS	HIV ENC	None	TOTAL
1983	1	2	4	-	-	-	2	9
1984	14	8	7	-	-	-	-	29
1985	13	27	15	6	-	-	-	61
1986	27	41	32	5	-	-	1	106
1987	24	69	30	9	1	2	-	135
1988	31	85	36	10	5	8	-	175
1989	49	103	54	7	6	4	-	223
1990	38	87	66	15	6	13	-	225
1991	45	112	82	7	11	9	-	266
1992	47	108	107	10	11	13	-	296
1993	39	94	123	14	23	14	-	307
1994	45	91	119	14	17	19	-	305
1995	36	74	107	7	19	21	-	264
1996	22	51	77	10	12	5	-	177
1997	15	36	68	13	10	9	-	151
1998	13	47	65	3	19	2	-	149
1999	12	44	44	6	9	4	1	120
2000	15	49	30	4	8	2	1	109
2001	5	15	8	1	7	2	-	38
total:	491	1,143	1,074	141	164	127	5	3,145

2001 figures are year-to-date 2001.

AIDS case reports formally classified as "KS and PCP" are now classified as either "KS" or "PCP".

KS - Kaposi's sarcoma

PCP - Pneumocystis carinii pneumonia

OI - other opportunistic infections

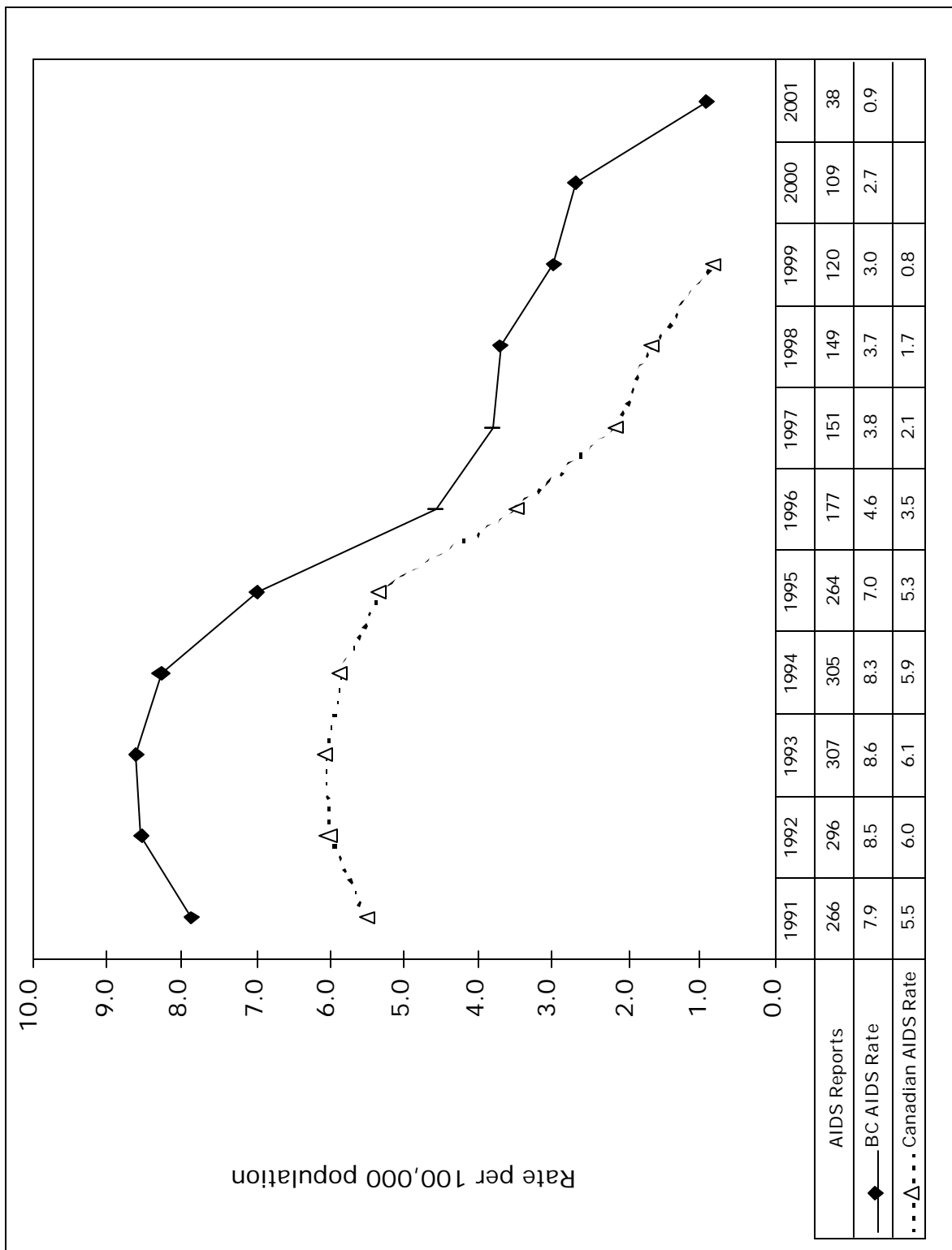
OM - other malignancies

HIV WS - Wasting syndrome due to HIV

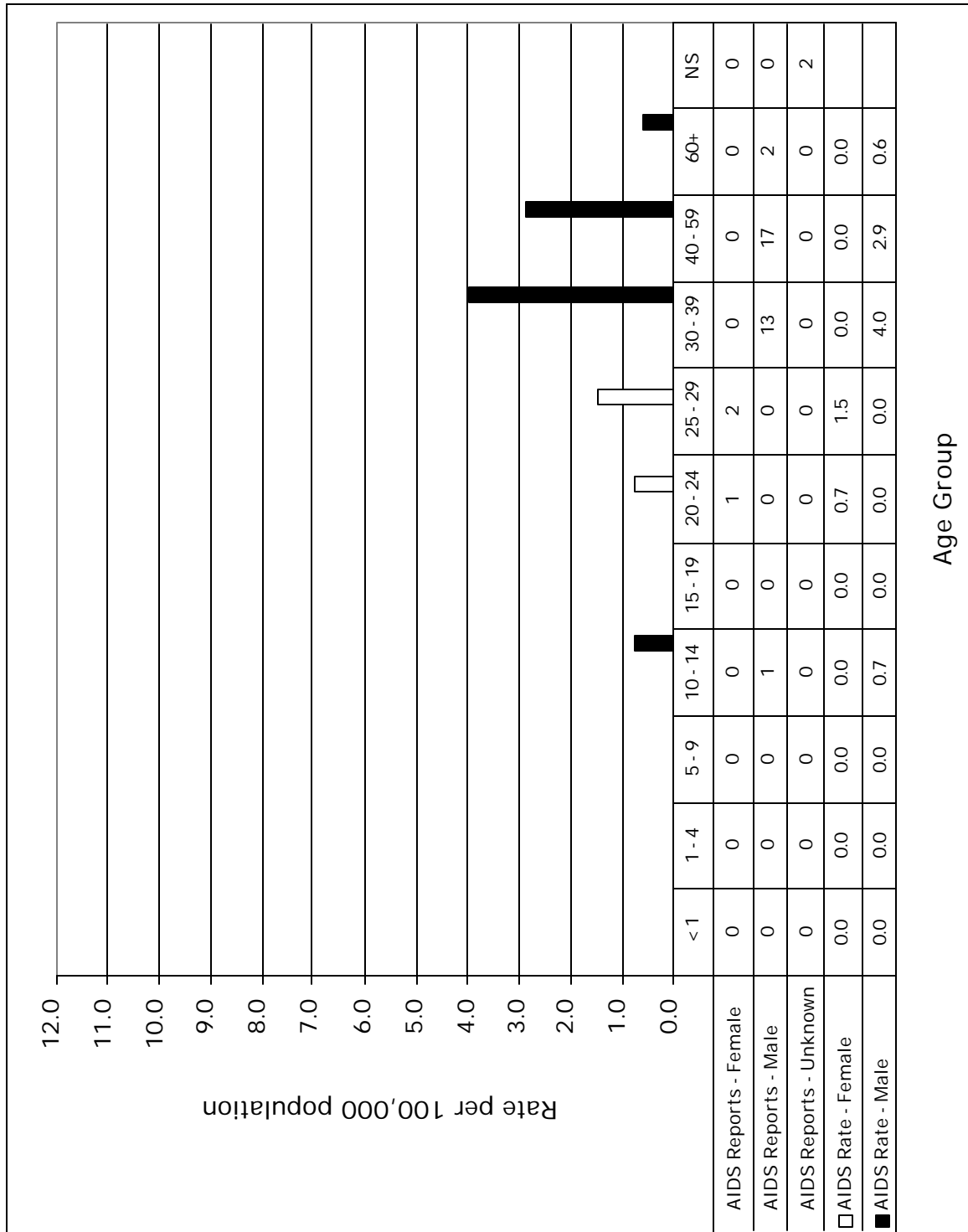
HIV ENC - Encephalopathy, HIV-related

Graph 1.5

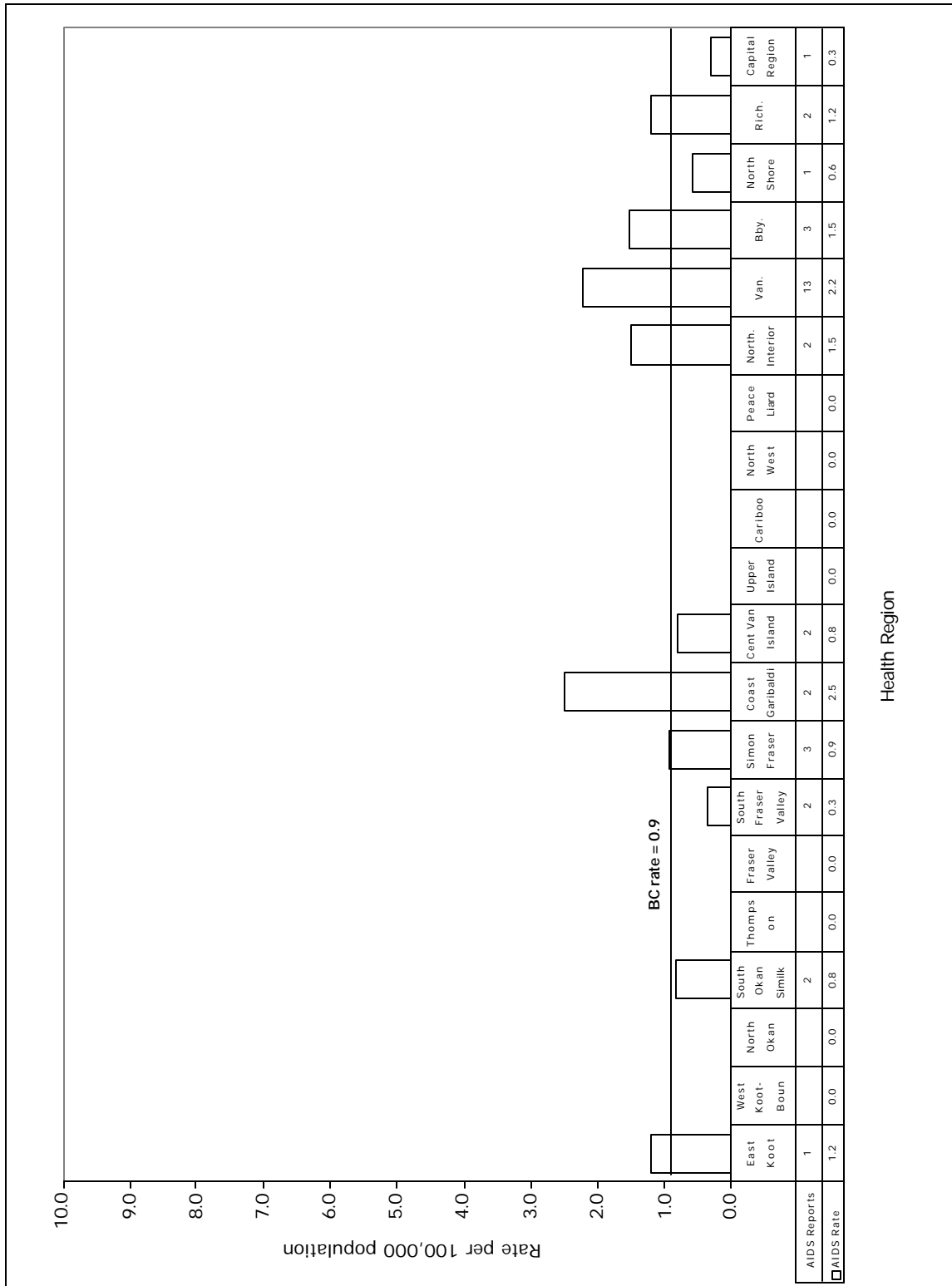
AIDS Case Reports by YEAR OF DIAGNOSIS for BC and Canada 1991-2001



Graph 1.6
AIDS Case Reports by AGE and GENDER for BC 2001



Graph 1.7
AIDS Case Reports by HEALTH REGION for BC 2001



HIV IN BRITISH COLUMBIA

In many jurisdictions, the use of HIV testing data to obtain an accurate view of the epidemic has been hampered by concerns over confidentiality. Consequent omission of unique patient identifiers from testing requisitions and data sets lead to difficulty with identifying duplicate tests for the same individual and with obtaining missing risk and demographic data.

Some jurisdictions in Canada have chosen to address the above concerns by adopting a system of nominal testing and reporting. Rather than opting to modify a system of non-nominal HIV testing which has been accepted by physicians and community groups in British Columbia, the division of STD/AIDS Control sought to improve HIV surveillance by enhancing and making better use of non-nominal information already in place.

The non-nominal *Enhanced HIV Surveillance System* (HIVSS) involves the following:

- Reporting of all positive HIV tests from the Provincial Laboratory to a surveillance database.
- A computerized algorithm to identify duplicate HIV testing reports.
- A nurse/epidemiologist to perform follow-up on all positive HIV test reports with the submitting healthcare providers. This serves to obtain missing information, validate existing information, and resolve outstanding questions of duplication. Also at this time, a selection of resources for assistance in case management is offered. During this interaction, a nurse/epidemiologist does not request client names when codes or initials have been used on requisitions.

Interpretation of HIV Tables:

In previous *Reports* (pre-1997), the HIV tables represented the number of reactive test reports without the removal of duplicates. With the HIVSS in place since January 1995, duplicate HIV test reports are now identified and removed from the data set.

For HIV test reports between 1985 and 1994, duplicates were removed by automated methods only. Since 1995, however, HIV test reports have been carefully examined by BOTH automated and manual methods which thus further improve the detection of duplicates. HIV data in the following tables now more closely represent the number of individuals with a new positive HIV test report.

Acknowledgements:

HIVSS team: David M. Patrick, MD, FRCPC, MHSc	Daphne Spencer, RN
Michael L. Rekart, MD, FRCPC, DTM&H	Lynn Wittenberg, RN
Darrel Cook, MSc	Anthony Rees, RN
Mel Kraiden, MD, FRCP(C)	Lisa Elliott, RN
Robbie MacDougall	Corrine Williams, RN

Staff from the Virology Laboratory, Provincial Laboratory, British Columbia Centre for Disease Control Society, for the collecting and compiling of HIV data.

Division of HIV/AIDS Surveillance, Bureau of HIV/AIDS and STD, Laboratory Centre for Disease Control, Health Protection Branch, Health Canada, for their financial contribution to the initial phases of this HIVSS project.

Table 2.1

Persons Testing Newly Positive for HIV by YEAR, 1985 to 2001

Year	Persons	Rate	Tests
1985	220	7.4	1,362
1986	670	22.3	5,328
1987	929	30.5	35,783
1988	746	23.9	28,866
1989	726	22.7	30,302
1990	645	19.6	38,024
1991	704	20.9	54,310
1992	788	22.7	84,419
1993	706	19.8	92,606
1994	840	22.8	104,118
1995	690	18.2	130,338
1996	714	18.4	138,250
1997	561	14.2	140,278
1998	482	12.0	137,701
1999	427	10.6	135,284
2000	413	10.2	135,488
2001	440	10.7	135,806
TOTAL:	10,701	-	1,428,263

2001 figures are year-to-date.

TESTS is the number of HIV tests performed, positive and negative, at the Provincial Laboratory.

RATE is per 100,000 population.

1985 annual total is for the months of October, November and December only.

Graph 2.1

Persons Testing Newly Positive for HIV by YEAR, 1990 to 2001

rate per 100,000 population

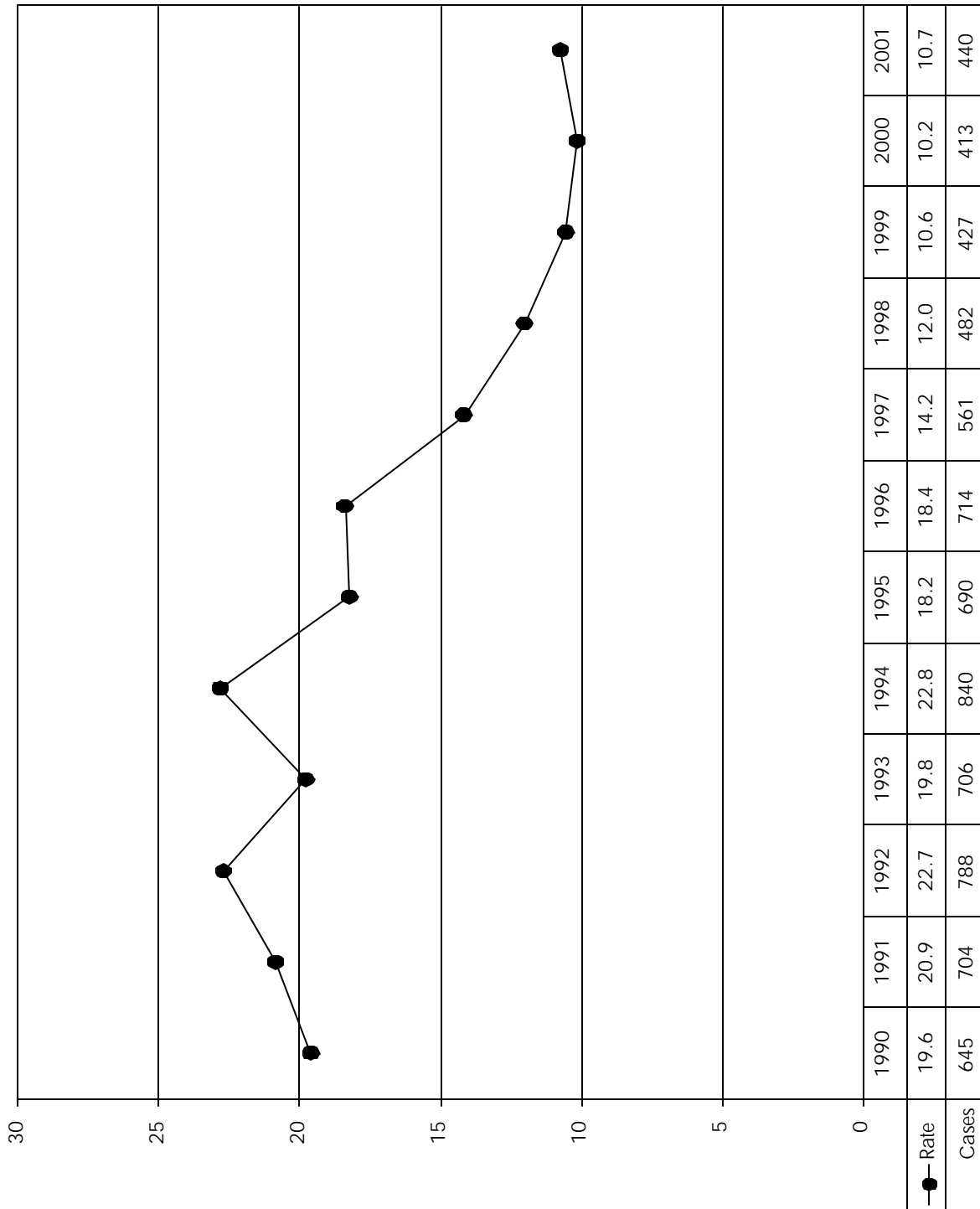


Table 2.2

Persons Testing Newly Positive for HIV by AGE and YEAR - MALES, 1996 to 2001

Age	HIV	1996	1997	1998	1999	2000	2001	TOTAL
< 18 mos	persons	1	2	1				15
	rate	1.35	2.70	1.37				
19 mos to 14 yrs	persons	1	1	2	1	2	2	30
	rate	0.32	0.32	0.63	0.32	0.64	0.65	
< 15 yrs	tests	394	682	544	489	495	466	6,423
15 to 19	persons	6	2	3	3	3	3	76
	rate	4.58	1.49	2.20	2.18	2.16	2.15	
	tests	2,155	2,803	2,750	2,816	2,663	2,625	25,371
20 to 29	persons	98	88	57	52	63	61	2,273
	rate	34.63	30.96	20.17	18.61	23.00	22.30	
	tests	16,163	16,215	16,213	15,782	15,324	14,902	177,095
30 to 39	persons	255	199	163	139	120	119	3,692
	rate	74.70	58.00	47.82	41.05	36.15	36.19	
	tests	15,447	15,431	15,146	14,866	14,898	14,638	173,360
40 to 49	persons	128	107	103	75	86	108	1,885
	rate	41.92	34.10	32.08	22.86	25.74	31.85	
	tests	9,141	9,549	9,772	9,814	10,005	10,598	103,921
50+	persons	54	47	46	44	49	48	733
	rate	11.08	9.28	8.78	8.12	8.72	8.30	
	tests	5,623	6,156	6,180	6,569	7,189	7,448	69,332
unknown	persons		2	2	1	1	2	259
	tests	1,055	949	785	365	423	373	14,579
total:	persons	543	448	377	315	324	343	8,963
	rate	28.08	22.73	18.90	15.66	16.05	16.88	
	tests	49,978	51,785	51,390	50,701	50,997	51,050	570,081

2001 figures are year-to-date

TESTS is the number of HIV tests performed, positive and negative, at the Provincial Laboratory.

RATE is per 100,000 population

TOTAL column to far right is cumulative from 1985 to year-to-date 2001.

Table 2.3

**Persons Testing Newly Positive for HIV by AGE and YEAR - FEMALES,
1996 to 2001**

Age	HIV	1996	1997	1998	1999	2000	2001	TOTAL
< 18 mos	persons			1				7
	rate			1.46				
19 mos to 14 yrs	persons	1				1	1	7
	rate	0.34				0.34	0.34	
< 15 yrs	tests	581	956	846	835	723	688	7,964
15 to 19	persons	5	1	1	3	4	7	54
	rate	4.07	0.79	0.78	2.32	3.04	5.32	
	tests	7,031	8,271	8,138	7,802	7,607	7,139	69,239
20 to 29	persons	53	29	37	35	27	36	468
	rate	19.38	10.52	13.45	12.83	10.02	13.31	
	tests	32,991	33,240	33,187	32,694	32,120	31,947	313,463
30 to 39	persons	74	54	35	37	26	28	527
	rate	22.07	16.03	10.42	11.07	7.92	8.57	
	tests	26,977	26,462	26,425	26,951	27,460	27,658	259,610
40 to 49	persons	31	13	19	26	25	15	211
	rate	10.20	4.15	5.92	7.91	7.44	4.39	
	tests	8,595	9,022	8,779	8,797	9,130	9,105	88,921
50+	persons	3	5	3	10	5	1	51
	rate	0.55	0.88	0.51	1.66	0.80	0.16	
	tests	3,821	4,525	4,191	4,234	4,581	4,645	44,947
unknown	persons		1			1		36
	tests	1,672	1,404	1,230	525	539	514	17,250
total:	persons	167	103	96	111	89	88	1,361
	rate	8.57	5.18	4.76	5.46	4.35	4.26	
	tests	81,668	83,880	82,796	81,838	82,160	81,696	801,394

2001 figures are year-to-date

TESTS is the number of HIV tests performed, positive and negative, at the Provincial Laboratory.

RATE is per 100,000 population.

TOTAL column to far right is cumulative from 1985 to year to 2001 year-to-date.

Table 2.4

Persons Testing Newly Positive for HIV by AGE and YEAR - GENDER UNKNOWN, 1996 to 2001

Age	HIV	1996	1997	1998	1999	2000	2001	TOTAL
< 18 mos	persons							
19 mos to 14 yrs	persons		1					2
< 15 yrs	tests	41	43	32	24	35	37	592
15 to 19	persons							7
	tests	394	233	225	197	192	243	3,459
20 to 29	persons		1	1			2	71
	tests	2,089	1,166	927	681	597	839	18,201
30 to 39	persons	2	6	2			3	112
	tests	1,763	1,007	747	491	495	660	14,661
40 to 49	persons	1	1	2			2	62
	tests	700	462	313	225	267	366	6,313
50+	persons	1		1			1	22
	tests	494	319	215	167	248	353	4,539
unknown	persons		1	3	1		1	101
	tests	1,123	1,383	1,056	960	497	562	9,023
total:	persons	4	10	9	1	-	9	377
	tests	6,604	4,613	3,515	2,745	2,331	3,060	56,788

2001 figures are year-to-date

TESTS is the number of HIV tests performed, positive and negative, at the Provincial Laboratory.

TOTAL column to far right is cumulative from 1985 to 2001 year-to-date.

Graph 2.2
Persons Testing Newly Positive for HIV by GENDER and YEAR, 1991 to 2001

rate per 100,000 population

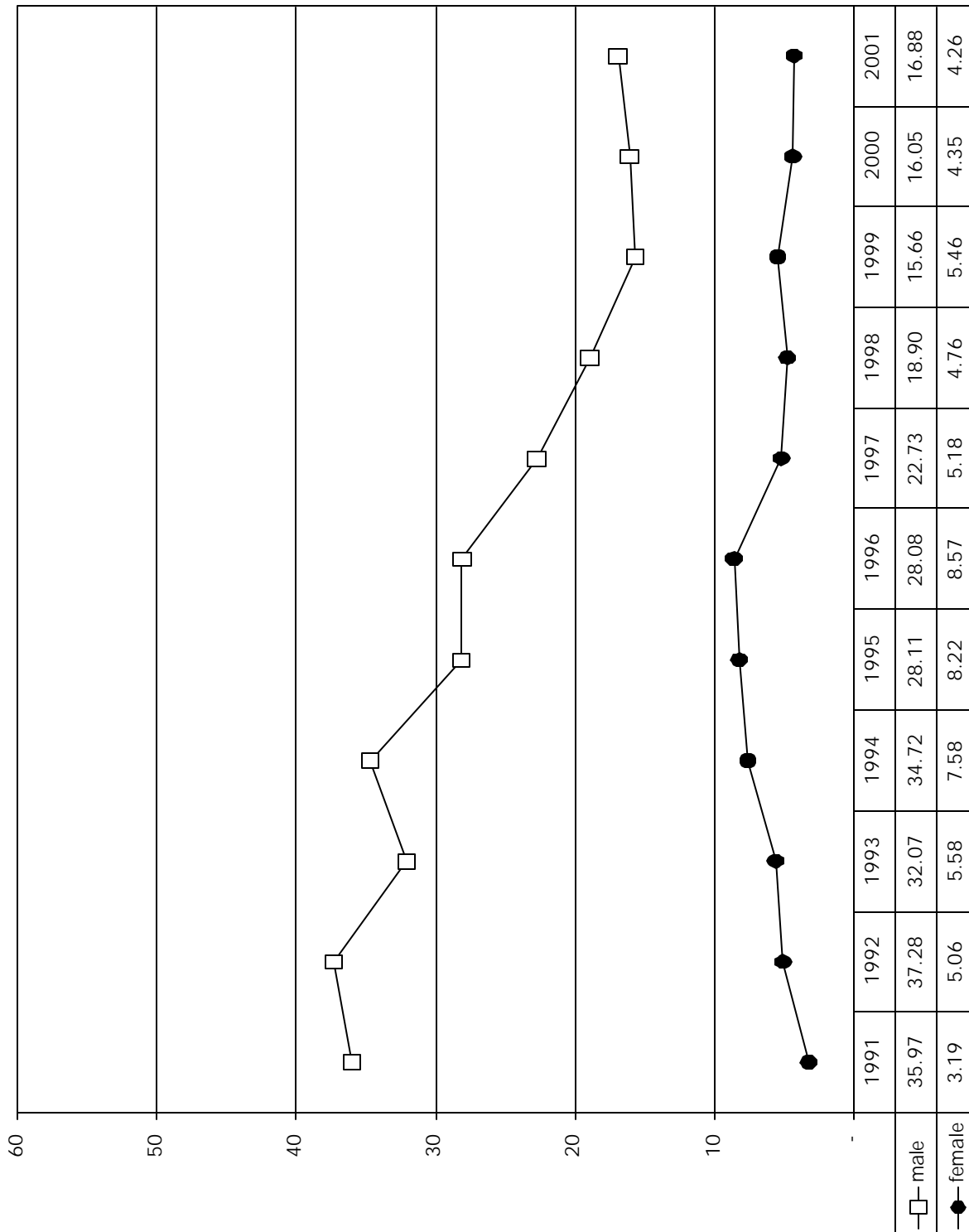


Table 2.5

Persons Testing Newly Positive for HIV by AGE and YEAR - TOTAL, 1996 to 2001

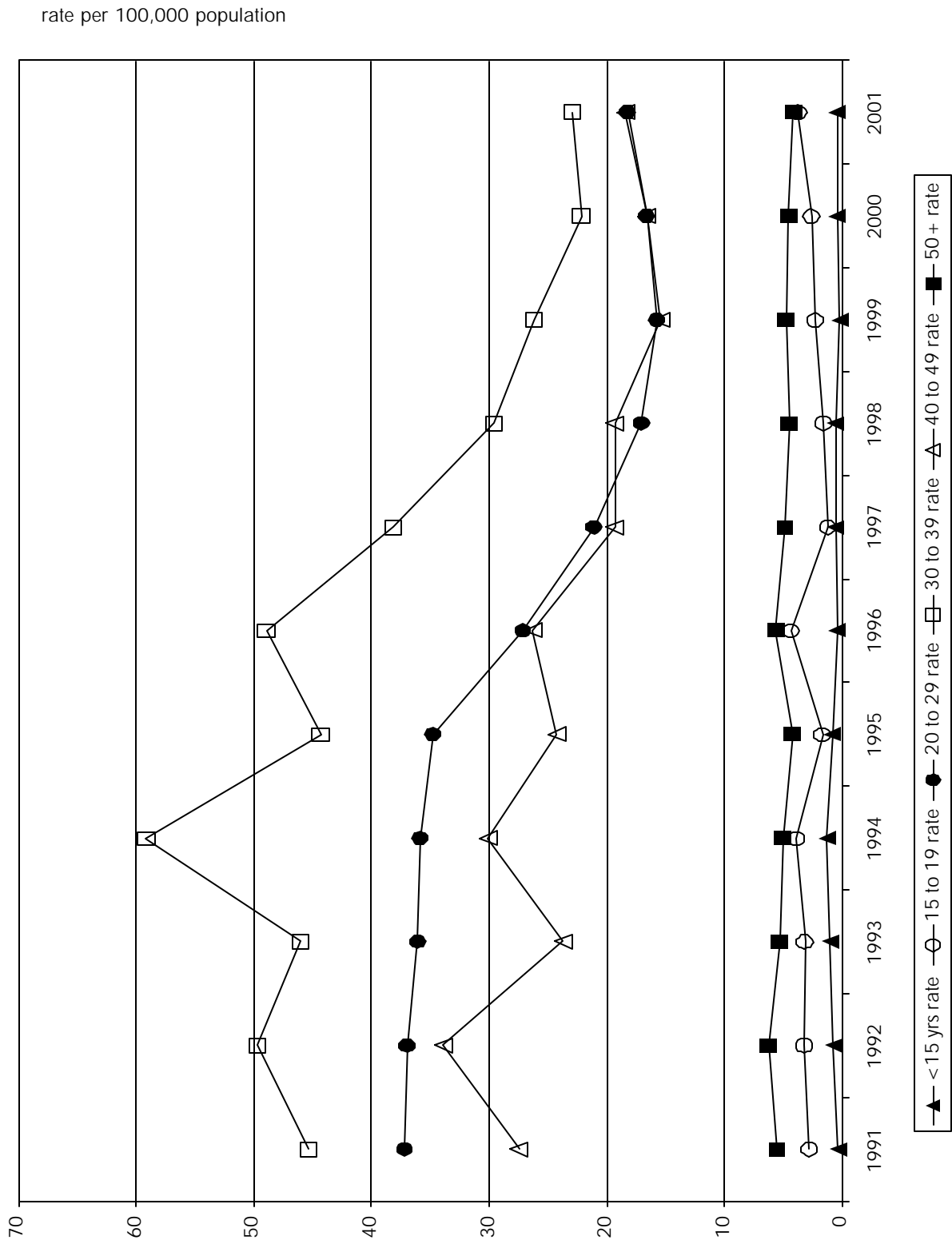
Age	HIV	1996	1997	1998	1999	2000	2001	TOTAL
< 15 yrs	persons	3	4	4	1	3	3	61
	rate	0.40	0.53	0.53	0.13	0.41	0.41	
	tests	1,016	1,681	1,422	1,348	1,253	1,191	14,979
15 to 19	persons	11	3	4	6	7	10	137
	rate	4.33	1.15	1.51	2.25	2.59	3.69	
	tests	9,580	11,307	11,113	10,815	10,462	10,007	98,069
20 to 29	persons	151	118	95	87	90	99	2,812
	rate	27.13	21.08	17.04	15.76	16.57	18.20	
	tests	51,243	50,621	50,327	49,157	48,041	47,688	508,759
30 to 39	persons	331	259	200	176	146	150	4,331
	rate	48.91	38.08	29.55	26.16	22.11	22.88	
	tests	44,187	42,900	42,318	42,308	42,853	42,956	447,631
40 to 49	persons	160	121	124	101	111	125	2,158
	rate	26.27	19.31	19.31	15.38	16.57	18.37	
	tests	18,436	19,033	18,864	18,836	19,402	20,069	199,155
50+	persons	58	52	50	54	54	50	806
	rate	5.61	4.84	4.50	4.71	4.55	4.10	
	tests	9,938	11,000	10,586	10,970	12,018	12,446	118,818
unknown	persons		4	5	2	2	3	396
	tests	3,850	3,736	3,071	1,850	1,459	1,449	40,852
total:	persons	714	561	482	427	413	440	10,701
	rate	18.39	14.17	12.02	10.55	10.15	10.74	
	tests	138,250	140,278	137,701	135,284	135,488	135,806	1,428,263

TESTS is the number of HIV tests performed, positive and negative, at the Provincial Laboratory.

RATE is per 100,000 population.

TOTAL column to far right is cumulative from 1985 to year-to-date 2001.

Graph 2.3
Persons Testing Newly Positive for HIV by AGE and YEAR, 1991 to 2001



Graph 2.4
Persons Testing Newly Positive for HIV by RISK CATEGORY and YEAR, 1991 to 2001

number of persons testing newly positive for HIV

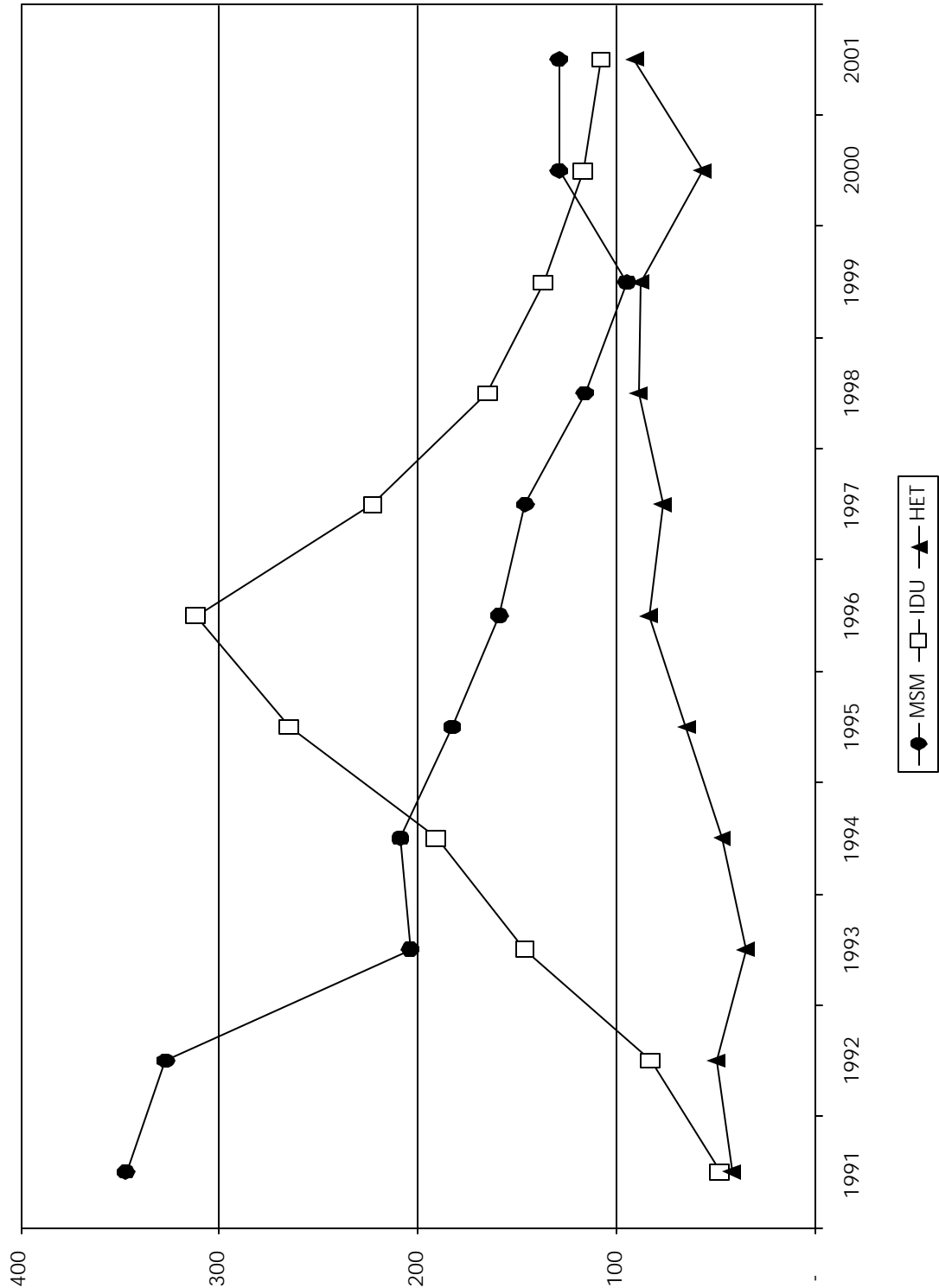


Table 2.6

Persons Testing Newly Positive for HIV by RISK CATEGORY and YEAR - MALES, 1996 to 2001

Risk Category	HIV	1996	1997	1998	1999	2000	2001	TOTAL
MSM	persons	159	146	116	95	129	129	4,714
	tests	4,068	3,871	3,536	3,192	3,138	2,060	55,630
MSM/IDU	persons	26	14	6	10	10	16	207
	tests	145	74	42	14	19	14	1,436
IDU	persons	240	168	125	93	91	81	1,434
	tests	3,896	2,335	2,303	1,732	1,508	1,140	32,794
heterosexual contact	persons	45	51	50	57	32	50	537
	tests	13,878	14,017	13,463	12,975	12,272	8,476	125,294
sex trade worker	persons	3	4		3	3		26
	tests	124	85	64	56	43	31	1,430
sex trade worker/IDU	persons	7	1	6	1	1		38
	tests	27	8	7	7	2	1	327
hemophilic	persons					1		64
	tests	40	66	67	64	62	49	899
blood/BP recipient (1)	persons	3	1	2	2	4	2	59
	tests	728	1,125	451	231	182	125	11,848
unspecified PE (2)	persons						3	27
	tests	241	26	71	110	34	29	4,259
visa/employ/insurance	persons							10
	tests	283	347	283	252	252	222	3,162
occupational EXP (3)	persons			1		1		3
	tests	566	1,245	537	384	780	829	6,084
unknown	persons	56	60	60	39	46	53	1,766
	tests	25,617	28,332	30,387	31,499	32,217	37,396	320,875
other (4)	persons	2		8	14	6	9	55
	tests	350	219	161	167	483	672	5,893
perinatal <18 mos (5)	persons	1	2	1				15
delayed testing (6)	persons	1	1	2	1			8
	tests	15	35	18	18	5	6	150
total:	persons	543	448	377	315	324	343	8,963
	tests	49,978	51,785	51,390	50,701	50,997	51,050	570,081

2001 figures are year-to-date.

TESTS is the number of HIV tests performed, positive and negative, at the Provincial Laboratory.

TOTAL column to far right is cumulative from 1985 to year-to-date 2001.

MSM - men who have sex with men

IDU - injection drug user

visa/employ/insurance - visa/employment/insurance

unspecified PE - unspecified parenteral exposure

blood/BP Recipient - blood or blood product recipient

occupational EXP - occupational exposure

(1), (2), (3), (4), (5), and (6) - refer to FOOTNOTES on page 42

Table 2.7

Persons Testing Newly Positive for HIV by RISK CATEGORY and YEAR - FEMALES, 1996 to 2001

Risk Category	HIV	1996	1997	1998	1999	2000	2001	TOTAL
WSW	persons		2		1		1	16
	tests	515	408	370	327	302	176	4,229
WSW/IDU	persons	1	1	1		1		10
	tests	64	34	20	8	7	2	391
IDU	persons	70	49	37	43	26	25	434
	tests	1,600	1,004	841	708	537	415	14,072
heterosexual contact	persons	39	25	37	31	25	40	322
	tests	39,054	39,493	38,818	37,666	36,221	33,160	303,793
sex trade worker	persons	1		1	2	1	1	13
	tests	187	96	142	135	103	92	2,267
sex trade worker/IDU	persons	41	14	12	12	18	10	201
	tests	274	125	59	51	32	15	2,663
hemophiliac	persons							1
	tests	8	17	8	3	4	5	106
blood/BP recipient (1)	persons			1	1	1		37
	tests	1,233	1,753	635	321	237	151	19,406
unspecified PE (2)	persons							13
	tests	406	17	127	248	56	49	5,791
visa/employ/insurance	persons							-
	tests	214	228	228	198	202	205	2,473
occupational EXP (3)	persons							-
	tests	1,529	2,904	1,290	980	1,706	1,698	15,094
unknown	persons	13	12	6	14	12	11	288
	tests	36,219	37,485	40,018	40,928	42,208	44,989	425,157
other (4)	persons	1			7	5		17
	tests	344	287	217	247	532	735	5,793
perinatal <18 mos (5)	persons			1				7
delayed testing (6)	persons	1						2
	tests	21	29	23	18	13	4	159
total:	persons	167	103	96	111	89	88	1,361
	tests	81,668	83,880	82,796	81,838	82,160	81,696	801,394

2001 figures are year-to-date.

TESTS is the number of HIV tests performed, positive and negative, at the Provincial Laboratory.

TOTAL column to far right is cumulative from 1985 to year-to-date 2001

WSW - women who have sex with women

unspecified PE - unspecified parenteral exposure

IDU - injection drug user

blood/BP Recipient - blood or blood product recipient

visa/employ/insurance - visa/employment/insurance

occupational EXP - occupational exposure

(1), (2), (3), (4), (5), and (6) - refer to FOOTNOTES on page 42

Table 2.8

Persons Testing Newly Positive for HIV by RISK CATEGORY and YEAR-GENDER UNKNOWN, 1996 to 2001

Risk Category	HIV	1996	1997	1998	1999	2000	2001	TOTAL
MSM or WSW	persons		1	1				99
	tests	100	80	66	44	51	33	1,196
MSM/IDU or WSW/IDU	persons						1	5
	tests	9	1	2	2			51
IDU	persons	2	6	3	1		2	34
	tests	167	82	58	34	14	21	1,298
heterosexual contact	persons		1	2			1	19
	tests	2,042	1,518	1,316	964	716	841	12,564
sex trade worker	persons							1
	tests	4	5	5	-	2	2	112
sex trade worker/IDU	persons							3
	tests	6	2		1		1	69
hemophilic	persons							3
	tests		1	3	-	1	1	24
blood/BP recipient (1)	persons							2
	tests	88	120	36	17	10	15	1,673
unspecified PE (2)	persons							2
	tests	39	3	9	10	1	3	426
visa/employ /insurance	persons							-
	tests	19	16	16	10	2	21	165
occupational EXP (3)	persons							-
	tests	133	177	63	50	54	83	812
unknown	persons	2	2	3			5	208
	tests	3,946	2,577	1,916	1,584	1,373	1,825	37,688
other (4)	persons							1
	tests	44	27	25	28	105	214	686
perinatal <18 mos (5)	persons							-
delayed testing (6)	persons							-
	tests	7	4		1	2		24
total:	persons	4	10	9	1	-	9	377
	tests	6,604	4,613	3,515	2,745	2,331	3,060	56,788

2001 figures are year-to-date.

TESTS is the number of HIV tests performed, positive and negative, at the Provincial Laboratory.

TOTAL column to far right is cumulative from 1985 to year-to-date 2001.

WSW - women who have sex with women

MSM - men who have sex with men

IDU - injection drug user

visa/employ/insurance - visa/employment/insurance

unspecified PE - unspecified parenteral exposure

blood/BP Recipient - blood or blood product recipient

occupational EXP - occupational exposure

Table 2.9

Persons Testing Newly Positive for HIV by RISK CATEGORY AND YEAR - TOTAL, 1996 to 2001

Risk Category	HIV	1996	1997	1998	1999	2000	2001	TOTAL
MSM or WSW	persons	159	149	117	96	129	130	4,829
	tests	4,683	4,359	3,972	3,563	3,491	2,269	61,055
MSM/IDU or WSW/IDU	persons	27	15	7	10	11	17	222
	tests	218	109	64	24	26	16	1,878
IDU	persons	312	223	165	137	117	108	1,902
	tests	5,663	3,421	3,202	2,474	2,059	1,576	48,164
heterosexual contact	persons	84	77	89	88	57	91	878
	tests	54,974	55,028	53,597	51,605	49,209	42,477	441,651
sex trade worker	persons	4	4	1	5	4	1	40
	tests	315	186	211	191	148	125	3,809
sex trade worker/IDU	persons	48	15	18	13	19	10	242
	tests	307	135	66	59	34	17	3,059
hemophiliac	persons						-	67
	tests	48	84	78	67	67	55	1,029
blood/BP recipient (1)	persons	3	1	3	3	5	2	98
	tests	2,049	2,998	1,122	569	429	291	32,927
unspecified PE (2)	persons						3	42
	tests	686	46	207	368	91	81	10,476
visa/employ/insurance	persons						-	10
	tests	516	591	527	460	456	448	5,800
occupational EXP (3)	persons			1	-	1	-	3
	tests	2,228	4,326	1,890	1,414	2,540	2,610	21,990
unknown	persons	71	74	69	53	58	69	2,262
	tests	65,782	68,394	72,321	74,011	75,798	84,210	783,720
other (4)	persons	3		8	21	11	9	73
	tests	738	533	403	442	1,120	1,621	12,372
perinatal <18 mos (5)	persons	1	2	2	-	-	-	22
delayed testing (6)	persons	2	1	2	1	-	-	10
	tests	43	68	41	37	20	10	333
total:	persons	714	561	482	427	413	440	10,701
	tests	138,250	140,278	137,701	135,284	135,488	135,806	1,428,263

2001 figures are year-to-date.

TESTS is the number of HIV tests performed, positive and negative, at the Provincial Laboratory.

TOTAL column to far right is cumulative from 1985 to year-to-date 2001.

WSW - women who have sex with women

MSM - men who have sex with men

IDU - injection drug user

visa/employ/insurance - visa/employment/insurance

unspecified PE - unspecified parenteral exposure

blood/BP Recipient - blood or blood product recipient

occupational EXP - occupational exposure

Table 2.10

Persons Testing Newly Positive for HIV by ETHNICITY and YEAR - MALES, 1996 to 2001

Ethnicity	HIV	1996	1997	1998	1999	2000	2001	TOTAL
Caucasian	persons	334	286	228	205	212	242	1,819
	tests	19,480	22,083	22,755	21,729	20,976	17,071	135,315
First Nations	persons	66	54	35	33	33	34	307
	tests	1,505	1,791	1,948	1,880	1,757	1,572	11,469
Asian	persons	18	16	12	12	20	17	107
	tests	909	1,364	1,858	2,353	1,729	1,432	10,122
South Asian	persons	11	4	14	8	4		52
	tests	244	323	203	193	302	281	1,759
Inuit	persons		1		1			2
	tests	3	7	14	8	11	4	54
Metis	persons	1		4	3		3	15
	tests	75	90	147	159	113	100	729
Black	persons	10	9	15	11	18	20	92
	tests	304	345	335	323	326	287	2,083
Hispanic	persons	14	12	13	11	18	12	98
	tests	259	359	362	385	341	270	2,133
unknown	persons	89	66	56	31	19	15	388
	tests	27,199	25,423	23,768	23,671	25,442	30,033	187,500
total:	persons	543	448	377	315	324	343	2,880
	tests	49,978	51,785	51,390	50,701	50,997	51,050	351,164

2001 figures are year-to-date.

TESTS is the number of HIV tests performed, positive and negative, at the Provincial Laboratory. Ethnicity data was collected beginning 1995.

Table 2.11

Persons Testing Newly Positive for HIV by ETHNICITY and YEAR - FEMALES, 1996 to 2001

Ethnicity	HIV	1996	1997	1998	1999	2000	2001	TOTAL
Caucasian	persons	78	50	42	48	40	40	373
	tests	25,274	28,686	29,167	28,387	27,024	22,354	174,783
First Nations	persons	54	28	30	40	22	32	239
	tests	2,765	3,043	3,253	3,338	3,260	2,946	20,200
Asian	persons	1	1	1	1	6	1	12
	tests	2,095	3,400	4,706	5,686	4,158	3,169	24,243
South Asian	persons		3	5	2	2		17
	tests	398	467	335	351	517	456	2,862
Inuit	persons							-
	tests	13	11	18	12	15	11	91
Metis	persons	1	3		2			7
	tests	107	105	162	184	123	94	835
Black	persons	7	3	6	8	8	14	51
	tests	205	243	277	258	250	216	1,555
Hispanic	persons	3	1	1	1	2		9
	tests	173	218	205	239	267	227	1,424
unknown	persons	23	14	11	9	9	1	102
	tests	50,638	47,707	44,673	43,383	46,546	52,223	342,103
total:	persons	167	103	96	111	89	88	810
	tests	81,668	83,880	82,796	81,838	82,160	81,696	568,096

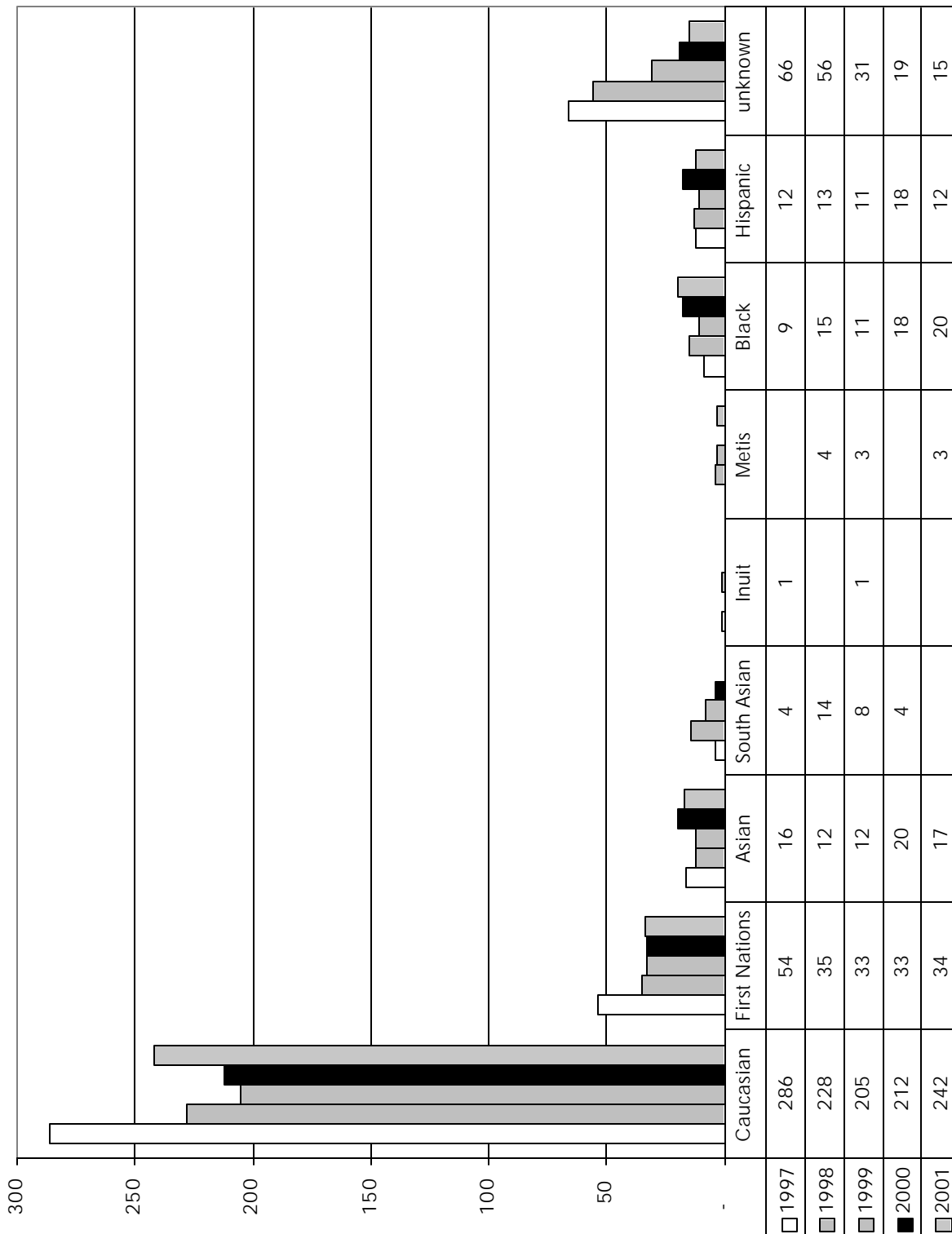
2001 figures are year-to-date.

TESTS is the number of HIV tests performed, positive and negative, at the Provincial Laboratory.

Ethnicity data was collected beginning 1995.

Graph 2.5

Persons Testing Newly Positive for HIV by ETHNICITY and YEAR - MALES, 1997 to 2001



Graph 2.6

Persons Testing Newly Positive for HIV by ETHNICITY and YEAR - FEMALES, 1997 to 2001

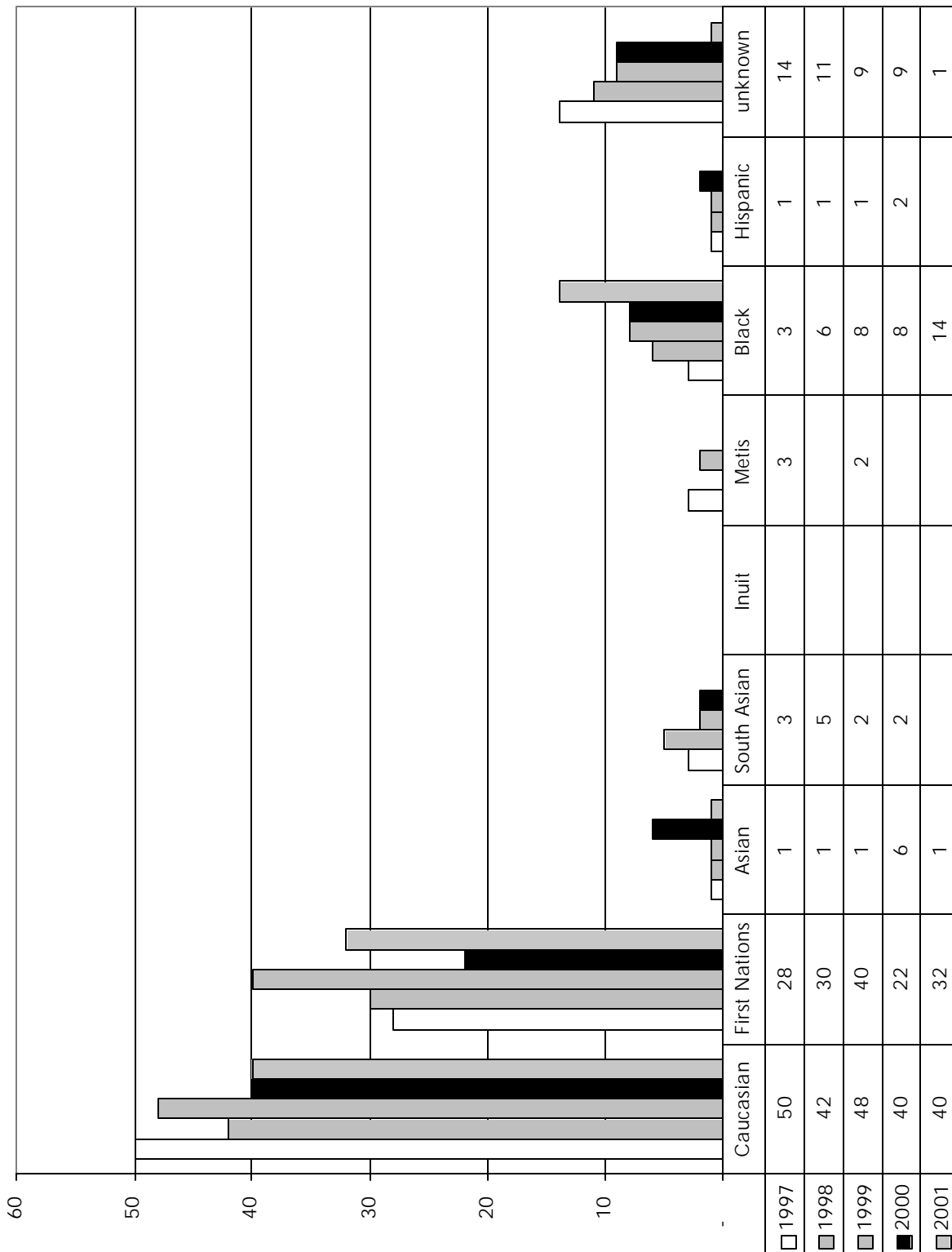


Table 2.12

Persons Testing Newly Positive for HIV by ETHNICITY and YEAR - GENDER UNKNOWN,

Ethnicity	HIV	1996	1997	1998	1999	2000	2001	TOTAL
Caucasian	persons	1	4	3			6	15
	tests	1,145	956	949	662	591	731	6,250
First Nations	persons	1	1	2	1	-	1	7
	tests	91	78	67	76	85	56	520
Asian	persons							-
	tests	60	63	92	56	40	55	447
South Asian	persons		1					1
	tests	18	21	16	8	10	16	175
Inuit	persons							-
	tests				-			-
Metis	persons							-
	tests		3	7	4	3	2	20
Black	persons			1				1
	tests	14	16	16	11	6	11	87
Hispanic	persons		1					1
	tests	5	8	9	3	7	7	43
unknown	persons	2	3	3			2	12
	tests	5,271	3,468	2,359	1,925	1,589	2,182	26,343
total:	persons	4	10	9	1	-	9	37
	tests	6,604	4,613	3,515	2,745	2,331	3,060	33,885

2001 figures are year-to-date.

TESTS is the number of HIV tests performed, positive and negative, at the Provincial Laboratory.

Ethnicity data was collected beginning in 1995.

Table 2.13

Persons Testing Newly Positive for HIV by ETHNICITY and YEAR - TOTAL, 1996 to 2001

Ethnicity	HIV	1996	1997	1998	1999	2000	2001	TOTAL
Caucasian	persons	413	340	273	253	252	288	2,207
	tests	45,899	51,725	52,871	50,778	48,591	40,156	316,348
First Nations	persons	121	83	67	74	55	67	553
	tests	4,361	4,912	5,268	5,294	5,102	4,574	32,189
Asian	persons	19	17	13	13	26	18	119
	tests	3,064	4,827	6,656	8,095	5,927	4,656	34,812
South Asian	persons	11	8	19	10	6	-	70
	tests	660	811	554	552	829	753	4,796
Inuit	persons	-	1	-	1	-	-	2
	tests	16	18	32	20	26	15	145
Metis	persons	2	3	4	5	-	3	22
	tests	182	198	316	347	239	196	1,584
Black	persons	17	12	22	19	26	34	144
	tests	523	604	628	592	582	514	3,725
Hispanic	persons	17	14	14	12	20	12	108
	tests	437	585	576	627	615	504	3,600
unknown	persons	114	83	70	40	28	18	502
	tests	83,108	76,598	70,800	68,979	73,577	84,438	555,946
total:	persons	714	561	482	427	413	440	3,727
	tests	138,250	140,278	137,701	135,284	135,488	135,806	953,145

2001 figures are year-to-date.

TESTS is the number of HIV tests performed, positive and negative, at the Provincial Laboratory.

Ethnicity data was collected beginning in 1995.

Table 2.14
**Persons Testing Newly Positive for HIV by HEALTH REGION* and YEAR,
 1996 to 2001**

Health Region	HIV	1996	1997	1998	1999	2000	2001	TOTAL
Burnaby	persons	19	17	9	8	15	13	187
	rate	10.16	9.00	4.75	4.17	7.80	6.70	
	tests	5,733	5,808	5,680	6,285			45,718
Capital	persons	36	24	28	16	27	36	445
	rate	10.85	7.17	8.35	4.77	8.06	10.74	
	tests	11,934	12,148	14,004	11,363	11,365	11,554	118,209
Cariboo	persons	3	2	1		2	2	22
	rate	4.09	2.64	1.30		2.59	2.57	
	tests	1,738	1,979	1,901	1,861	1,729	1,734	16,192
Central Fraser Valley	persons							81
	rate							
	tests							12,122
Central Vancouver Island	persons	14	19	10	12	13	12	172
	rate	6.00	7.94	4.13	4.92	5.30	4.85	
	tests	6,948	7,347	7,094	6,925	6,917	7,229	65,928
Coast Garibaldi	persons	7	5	3	3	2	5	52
	rate	9.55	6.55	3.83	3.76	2.49	6.23	
	tests	2,462	2,416	2,384	2,293	2,227	2,381	21,286
East Kootenay	persons	2	2	1	3	1		18
	rate	2.53	2.49	1.23	3.70	1.21		
	tests	1,360	1,551	1,393	1,400	1,286	1,228	11,924
Fraser Valley	persons	17	14	17	8	22	12	164
	rate	7.35	5.93	7.11	3.31	9.05	4.91	
	tests	6,322	7,634	7,574	7,404	7,286	7,371	63,423
Kootenay Boundary	persons	10	2	1	1	1	5	39
	rate	12.25	2.43	1.21	1.22	1.21	6.04	
	tests	1,861	2,011	1,860	1,755	1,792	1,750	17,292
North Okanagan	persons	4	4	4	1	5	2	39
	rate	3.51	3.43	3.39	0.84	4.19	1.65	
	tests	2,639	2,848	2,772	2,658	2,619	2,628	23,887
North Shore	persons	13	8	11	8	6	9	158
	rate	7.35	4.48	6.11	4.42	3.33	5.00	
	tests	4,847	5,157	5,216	4,875	4,875	5,030	52,138
North West	persons	2	1	2	2	1	1	30
	rate	2.22	1.09	2.18	2.19	1.09	1.09	
	tests	2,561	2,938	2,647	2,505	2,381	2,519	23,567

2001 figures are year-to-date.

TESTS is the number of HIV tests performed, positive and negative, at the Provincial Laboratory.

RATE is per 100,000 population.

TOTAL column to far right is cumulative from 1989 to year-to-date 2001.

CENTRAL FRASER VALLEY: As of 1995, any HIV positive test reports that fall within the areas previously served by the Central Fraser Valley Health Unit will now be designated to the following health jurisdictions: Mission to Fraser Valley; Maple Ridge and Pitt Meadows to Simon Fraser; and Langley to South Fraser.

*HEALTH REGION - An HIV positive test report is designated to the appropriate HEALTH REGION according to the location of the physician/clinic site where the person tested.

Table 2.14 (continued)

Persons Testing Newly Positive for HIV by HEALTH REGION* and YEAR, 1996 to 2001

Health Region	HIV	1996	1997	1998	1999	2000	2001	TOTAL
Northern Interior	persons	2	4	2	4	3	9	64
	rate	1.55	3.03	1.50	3.00	2.24	6.68	
	tests	4,034	4,099	3,981	3,700	3,957	3,791	40,775
Okanagan Similkameen	persons	12	6	11	6	13	8	130
	rate	5.44	2.65	4.78	2.60	5.58	3.35	
	tests	5,830	5,647	5,616	5,619	5,595	5,907	53,725
Peace Liard	persons	2	1			2		11
	rate	3.09	1.53			3.02		
	tests	1,723	1,757	1,732	1,606	1,651	1,696	14,721
Richmond	persons	8	5	7			1	78
	rate	5.16	3.15	4.31			0.60	
	tests	3,631	3,613	3,428	3,613			26,162
Simon Fraser	persons	40	36	22	20	30	25	347
	rate	13.22	11.63	6.97	6.21	9.22	7.71	
	tests	9,742	9,967	10,154	10,053	16,717	17,248	103,680
South Fraser	persons	41	51	31	22	19	35	338
	rate	7.55	9.18	5.49	3.82	3.30	6.04	
	tests	12,546	15,505	15,565	15,185	15,492	16,122	125,434
Thompson	persons	5	4	10	2	6	10	72
	rate	3.83	3.00	7.38	1.46	4.36	7.23	
	tests	4,017	4,145	4,095	4,138	4,127	4,187	37,183
Upper Island	persons	8	2	4	2	3	2	47
	rate	6.75	1.65	3.26	1.63	2.44	1.63	
	tests	3,950	3,983	3,910	3,486	3,296	3,246	35,003
Vancouver	persons	469	352	307	308	242	253	5,619
	rate	85.86	63.30	54.45	53.96	42.03	43.21	
	tests	41,087	37,542	36,356	34,430	38,026	36,326	422,029
unknown	persons		2	1	1			23
	tests	3,285	2,183	339	4,130	4,150	3,859	26,526
total:	persons	714	561	482	427	413	440	8,136
	rate	18.39	14.17	12.02	10.55	10.15	10.74	
	tests	138,250	140,278	137,701	135,284	135,488	135,806	1,356,924

2001 figures are year-to-date.

TESTS is the number of HIV tests performed, positive and negative, at the Provincial Laboratory.

RATE is per 100,000 population.

TOTAL column to far right is cumulative from 1989 to year-to-date 2001.

*HEALTH REGION - An HIV positive test report is designated to the appropriate HEALTH REGION according to the location of the physician/clinic site where the person tested.

Table 2.15

Persons Testing Newly Positive for HIV by SPECIMEN SOURCE and YEAR, 1996 to 2001

Specimen Source	HIV	1996	1997	1998	1999	2000	2001	TOTAL
private physician	persons	393	335	284	233	256	292	5,019
	tests	109,830	109,244	104,029	102,851	105,750	105,634	1,053,047
hospital	persons	110	73	58	52	84	77	1,493
	tests	17,612	19,147	21,069	21,407	20,728	21,477	188,461
STD/ATEC Clinic (7)	persons	22	21	15	21	8	19	333
	tests	3,066	3,164	3,024	2,950	3,504	1,880	35,436
STD/AIDS Outreach (8)	persons	82	57	49	47	44	32	802
	tests	3,023	3,101	3,358	3,135	2,478	1,981	32,206
health unit	persons	13	13	14	4	1	3	153
	tests	4,712	5,557	6,110	4,919	3,004	3,436	45,935
Red Cross referral	persons							7
	tests	1						88
unknown	persons				2	1		7
	tests	6	65	111	22	24	1,398	1,751
VIDUS study (9)	persons	69	32	16	18	13	1	149
downtown clinics (10)	persons	25	30	21	36	2	11	125
corrections (11)	persons			25	14	4	5	48
total:	persons	714	561	482	427	413	440	8,136
	tests	138,250	140,278	137,701	135,284	135,488	135,806	1,356,924

2001 figures are year-to-date .

TESTS is the number of HIV tests performed, positive and negative, at the Provincial Laboratory.

TOTAL column to far right is cumulative from 1989 to year-to-date 2001.

Any positive test result for HIV from the UBC Virology Laboratory or the BC Biomedical Ltd. is referred to the Provincial Laboratory at the BC Centre for Disease Control Society for confirmatory testing

Specimen Source	HIV	1994	1995	1996	1997	1998	1999	TOTAL
UBC Virology Laboratory (12)	tests	2,789	2,916	3,956	3,846	3,413	3,396	30,094
BC Biomedical Ltd. (13)	tests	1,441	1,654	1,694	1,371	1,152	1,241	15,224
total:	tests	4,230	4,570	5,650	5,217	4,565	4,637	45,318

TESTS is the number of HIV tests performed, positive and negative, at the Provincial Laboratory.

TOTAL column to far right is cumulative from 1989 to year end 1999.

VIDUS Study - Vancouver Injection Drug User Study

UBC Virology Laboratory - University of British Columbia Virology Laboratory

(7), (8), (9), (10), (11), (12), and (13) - refer to FOOTNOTES on page 42

Perinatal Transmission of HIV

Since HIV antibody status is not diagnostic prior to 18 months of age, HIV infections documented in this age group are confirmed through direct identification of HIV by PCR, p24 antigen testing and/or HIV culture on two or more consecutive assays.

Table 2.16 has been produced to more accurately indicate the number of perinatal HIV infections in British Columbia. The first row (maternal AB) indicates those < 18 months of age with maternal antibodies for HIV whereas the second row (true infection) indicates those < 18 months of age with true HIV infections.

Table 2.16

Maternal Antibody Positive for HIV vs True HIV Infection - < 18 MONTHS OF AGE, 1992 to 2001

HIV	1992	1993	1994	1995	1996	1997	1998	1999	2000	2001	TOTAL
maternal AB	10	15	17	24	19	17	16	21			161
true infection	2	4	5	2	1	2	2	-			22

maternal AB - maternal antibody

TOTAL column to far right is cumulative from 1989 to year-to-date 2001.

Since pregnancy is not an HIV risk category, a separate table (Table 2.17) has been prepared to monitor the number of pregnant women whose HIV test requisition stated that the test was being done as a prenatal assessment and of these women, the number who have tested positive for HIV. This does not include pregnant women tested for HIV whose requisition indicated a different risk or reason for testing, e.g. injection drug user.

Please note that the pregnant women who have tested positive for HIV are included in Table 2.7 - Persons Testing Newly Positive for HIV by Risk Category in accordance to their risk (e.g.

Table 2.17

Women Testing Newly Positive for HIV - PRENATAL SCREENING, 1996 to 2001

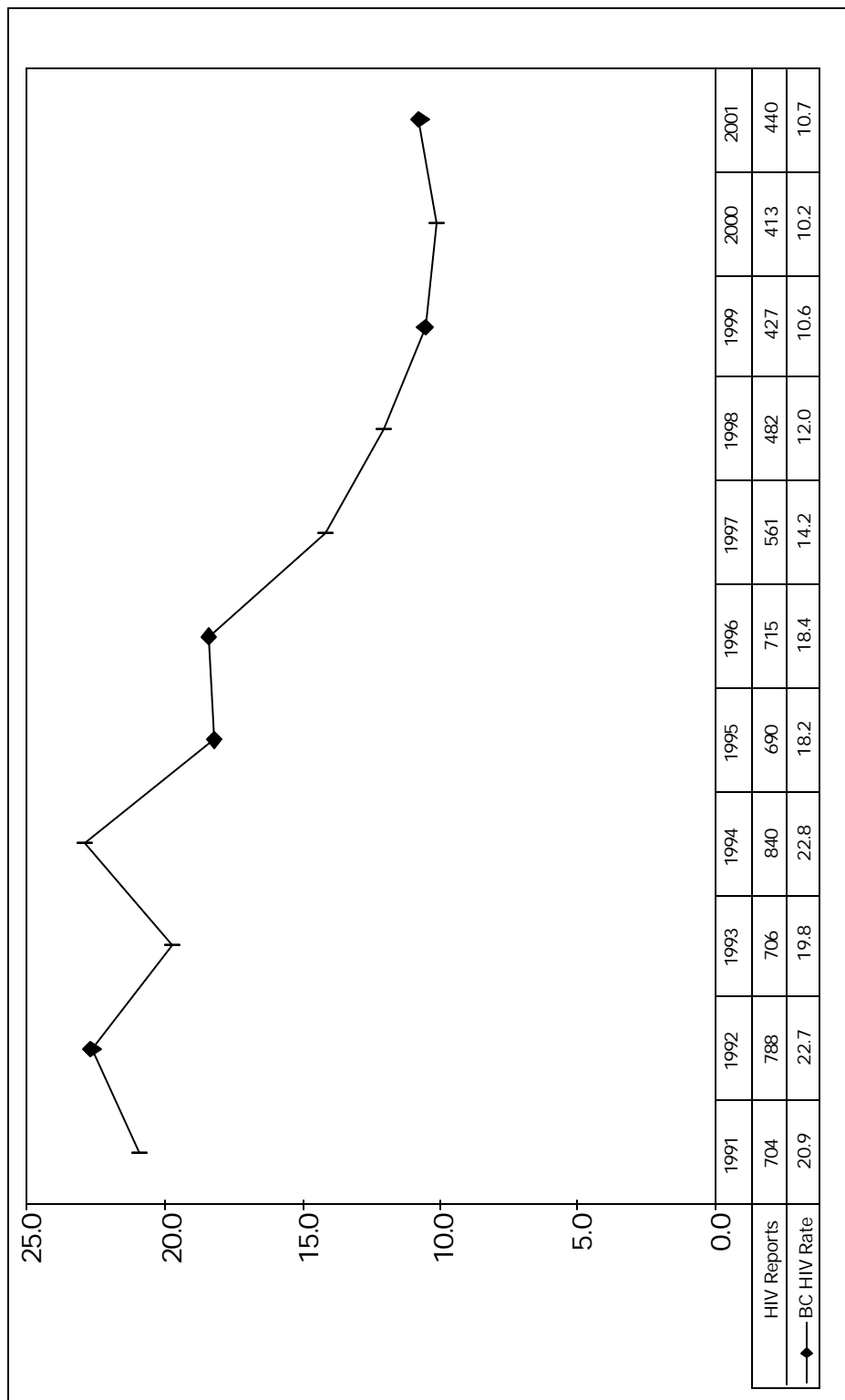
Gender	HIV	1996	1997	1998	1999	2000	2001	TOTAL
male	persons			1			1	2
	tests	381	489	443	609	732	164	2,923
female	persons	11	5	7	3	4	18	62
	tests	21,642	23,662	23,509	23,567	23,408	23,618	155,198
unknown	persons							-
	tests	1,093	686	581	440	354	471	5,152
total:	persons	11	5	8	3	4	19	64
	tests	23,116	24,837	24,533	24,616	24,494	24,253	163,273

2001 figures are year-to-date.

Graph 2.7

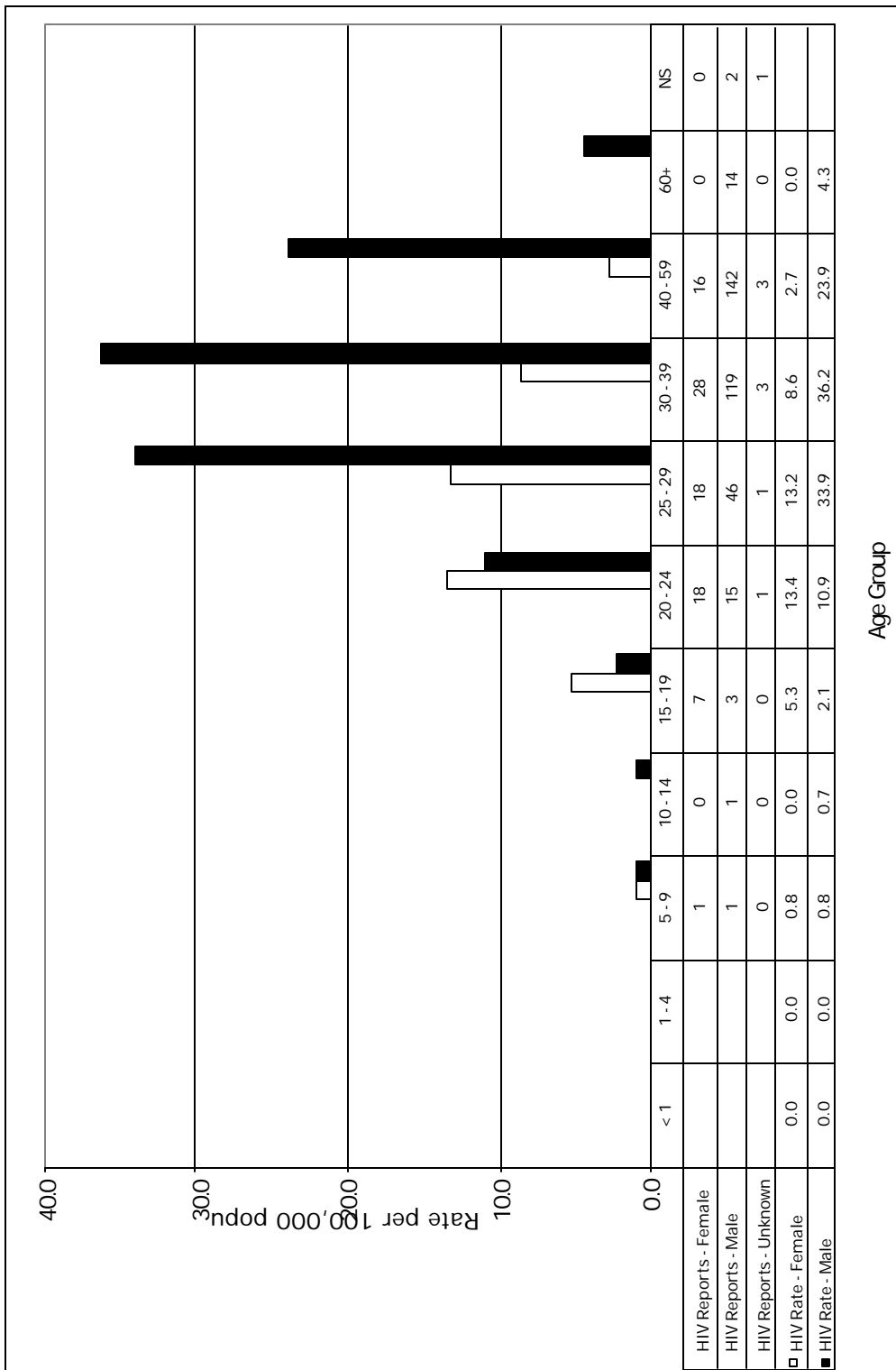
Persons Testing Newly Positive for HIV by YEAR for BC, 1991-2001

rate per 100,000 population



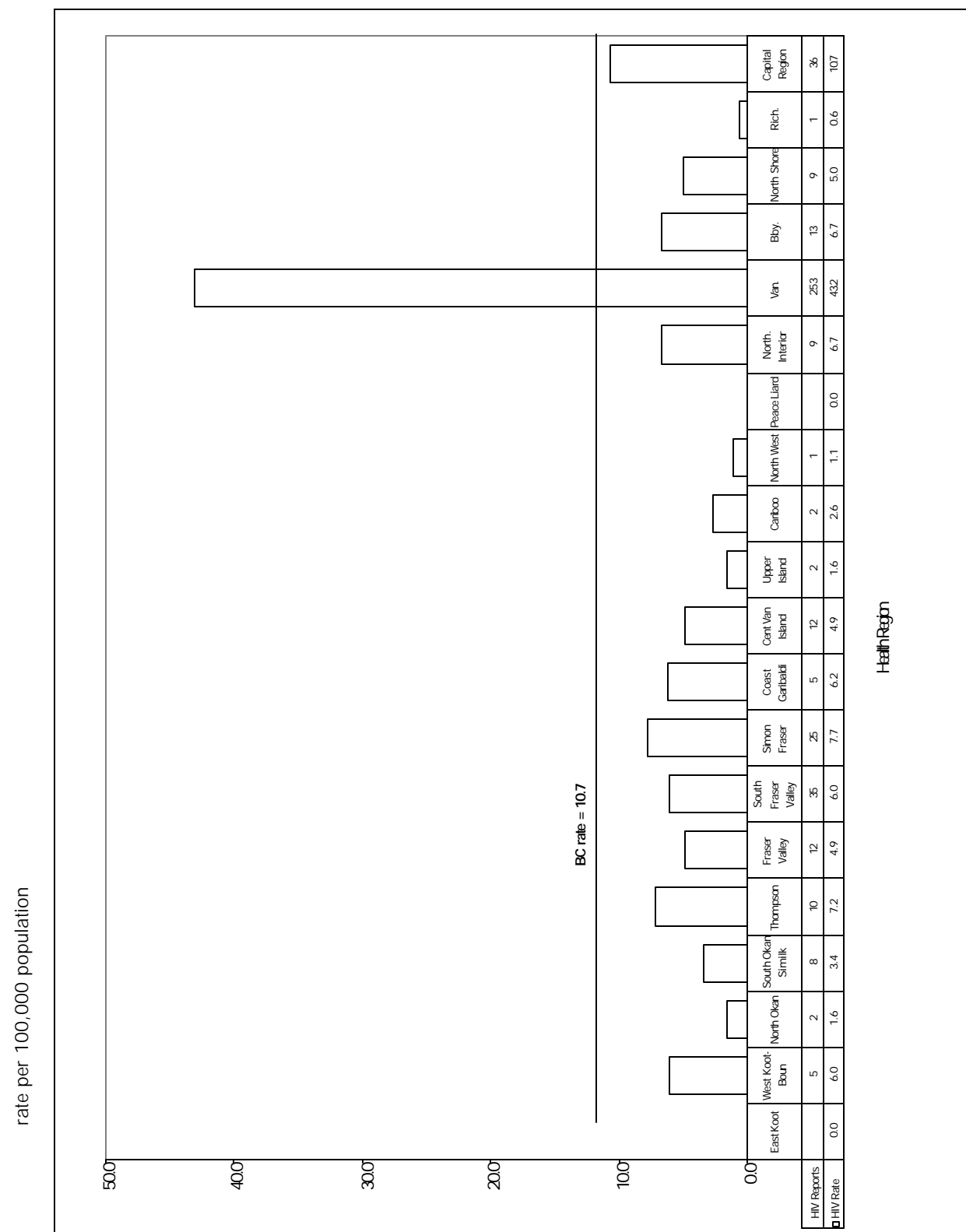
Graph 2.8

Persons Testing Newly Positive for HIV by AGE and GENDER, 2001



Graph 2.9

Persons Testing Newly Positive for HIV by HEALTH REGION, 2001



HIV FOOTNOTES

No.	Risk Category	Footnote
(1)	blood/BP recipient	Follow-up is <u>not</u> done for each person testing newly positive for HIV in this risk category. Persons in this risk category are self-
(2)	unspecified PE	Initially used on the requisition form to include IDU, blood/BP recipients, hospital incidents, and all other parenteral exposures. Unspecified PE was eliminated from the revised requisition form in
(3)	occupational EXP	Follow-up <u>is</u> done on each positive HIV test in this risk category to determine if the person's positive test is the result of a <u>true</u> occupa-
(4)	other	Includes the following: endemic area immigrants; semen recipients; persons who frequent sex trade workers; and organ donors.
(5)	perinatal < 18 mos	Since HIV antibody testing is not diagnostic prior to 18 months of age, HIV infections documented in this age group were confirmed through direct detection of HIV on two or more consecutive assays
(6)	delayed testing	A child infected through perinatal transmission who has not been previously identified prior to the age of 18 months by a direct de-

No.	Specimen Source	Footnote
(7)	STD/A TEC Clinic	Both the STD and ATEC Clinic are located at 655 West 12 th Avenue in Vancouver.
(8)	STD/AIDS Outreach	HIV testing is done at various sites in the Lower Mainland (e.g. jails, outreach clinics, detoxification centres) by outreach nurses
(9)	VIDUS Study	To address the outbreak of HIV among IDUs, the BC Centre for Excellence in HIV/AIDS and the BC Centre for Disease Control Society initiated the VIDUS Study (an open cohort study) to investigate the determinants of HIV transmission and the progression of HIV in
(10)	downtown clinics	The downtown clinics provide medical, dental, pharmaceutical, nutritional, and other health care services to residents of Vancou-
(11)	corrections	Many inmates choose to get an HIV test done at the time of intake or when they perceive that they have been at risk of acquiring HIV.
(12)	UBC Virology Laboratory	UBC performs routine HIV antibody ELISA tests. Positive ELISA screens are always confirmed with Western Blots at the Provincial