



BC Centre for Disease Control
Provincial Health Services Authority

Clinical Prevention Services (CPS)

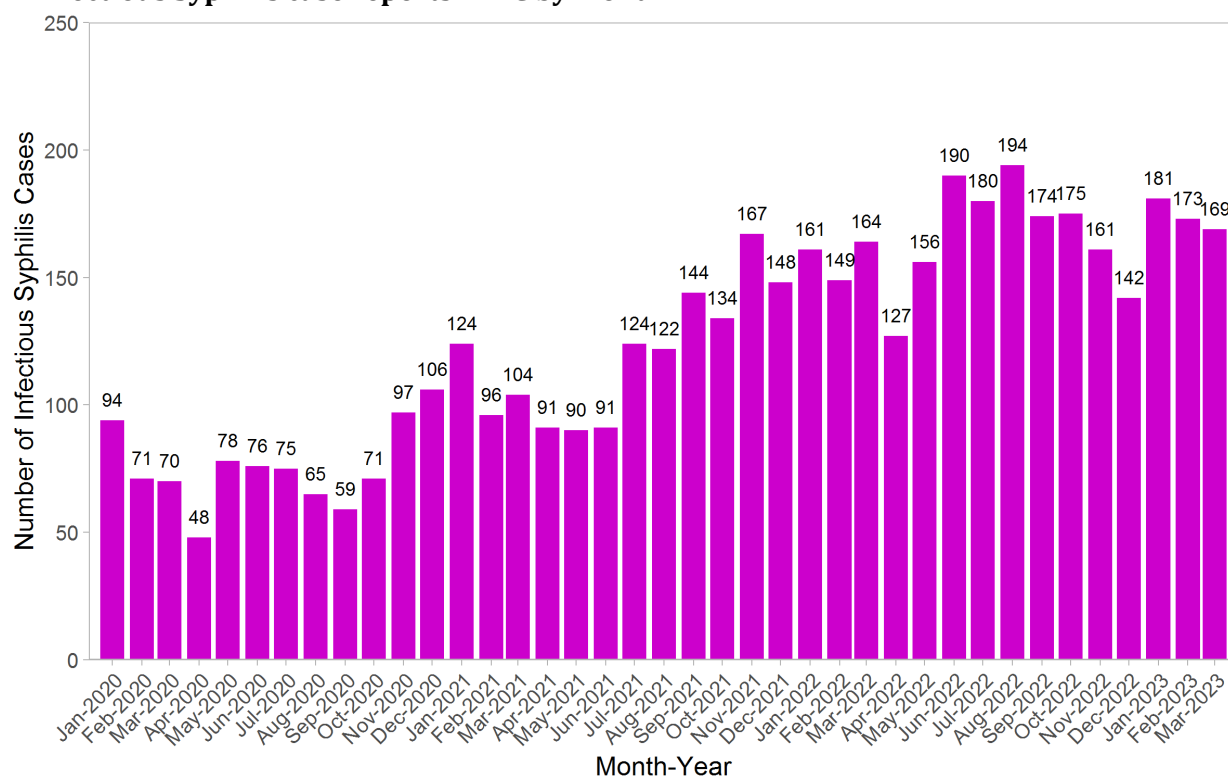
Quarterly Surveillance Report

Table of Contents

Infectious Syphilis	3
1. Infectious Syphilis case reports in BC by month	3
2. Infectious Syphilis case Reports in BC by health authority	4
3. Infectious Syphilis case reports in BC by gender	5
4. Infectious Syphilis case reports in BC by age group	6
5.a. Syphilis non-prenatal testing episodes* and percent positivity in BC by month - total	7
5.b. Syphilis non-prenatal testing episodes* and percent positivity in BC by month - female	8
5.c. Syphilis non-prenatal testing episodes* and percent positivity in BC by month - male	9
Chlamydia	10
6. Genital and Extra-genital Chlamydia case reports in BC by month	10
7. Genital Chlamydia case reports in BC by health authority	11
8. Genital Chlamydia case reports in BC by gender	12
9. Extra-genital Chlamydia case reports in BC by gender	13
10. Genital Chlamydia case reports in BC by age group	14
Gonorrhea	15
11. Genital and Extra-genital Gonorrhea case reports in BC by month	15
12. Genital Gonorrhea case reports in BC by health authority	16
13. Genital Gonorrhea case reports in BC by gender	17
14. Extra-genital Gonorrhea case reports in BC by gender	18
15. Genital Gonorrhea case reports in BC by age group	19
HIV	20
16. New HIV diagnoses in BC by month	20
17. New HIV diagnoses in BC by health authority	21
18. New HIV diagnoses in BC by sex	22
19. New HIV diagnoses in BC by age group	23
20.a. HIV non-prenatal testing episodes* and percent positivity in BC by month - total	24
20.b. HIV non-prenatal testing episodes* and percent positivity in BC by month - female	25
20.c. HIV non-prenatal testing episodes* and percent positivity in BC by month - male	26
Hepatitis C	27
21. New Hepatitis C cases in BC by month	27
22. New Hepatitis C cases in BC by health authority	28
23. New Hepatitis C cases in BC by sex	29
24. New Hepatitis C cases in BC by age group	30
25.a. HCV antibody testing episodes* and percent positivity in BC by month - total	31
25.b. HCV antibody testing episodes* and percent positivity in BC by month - female	32
25.c. HCV antibody testing episodes* and percent positivity in BC by month - male	33
Active Tuberculosis	34
26. Active tuberculosis case reports in BC by month	34
27. Active tuberculosis case reports in BC by health authority	35
28. Active tuberculosis case reports in BC by sex	36
29. Active tuberculosis case reports in BC by age group	37
Latent Tuberculosis Infection	38
30. Latent tuberculosis infection (LTBI) treatment starts in BC by month	38
Technical Appendix	39

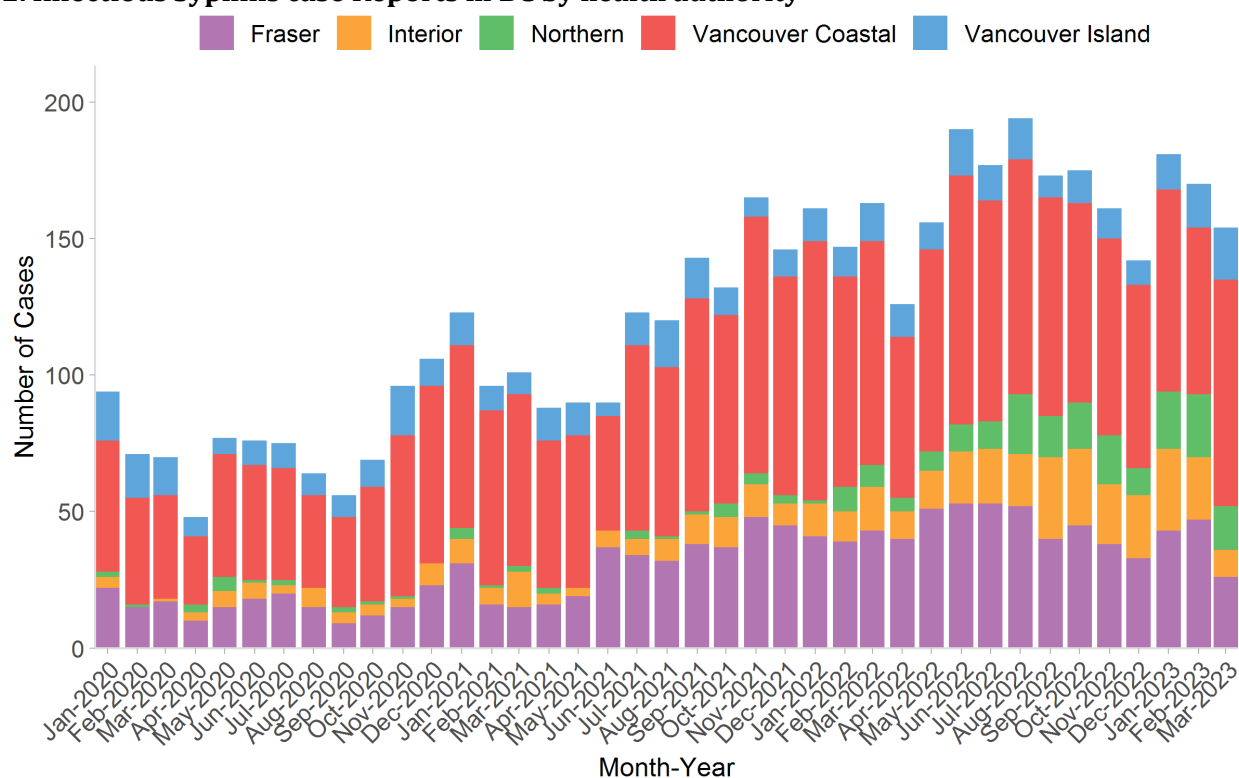
Infectious Syphilis

1. Infectious Syphilis case reports in BC by month



Preliminary data and subject to change

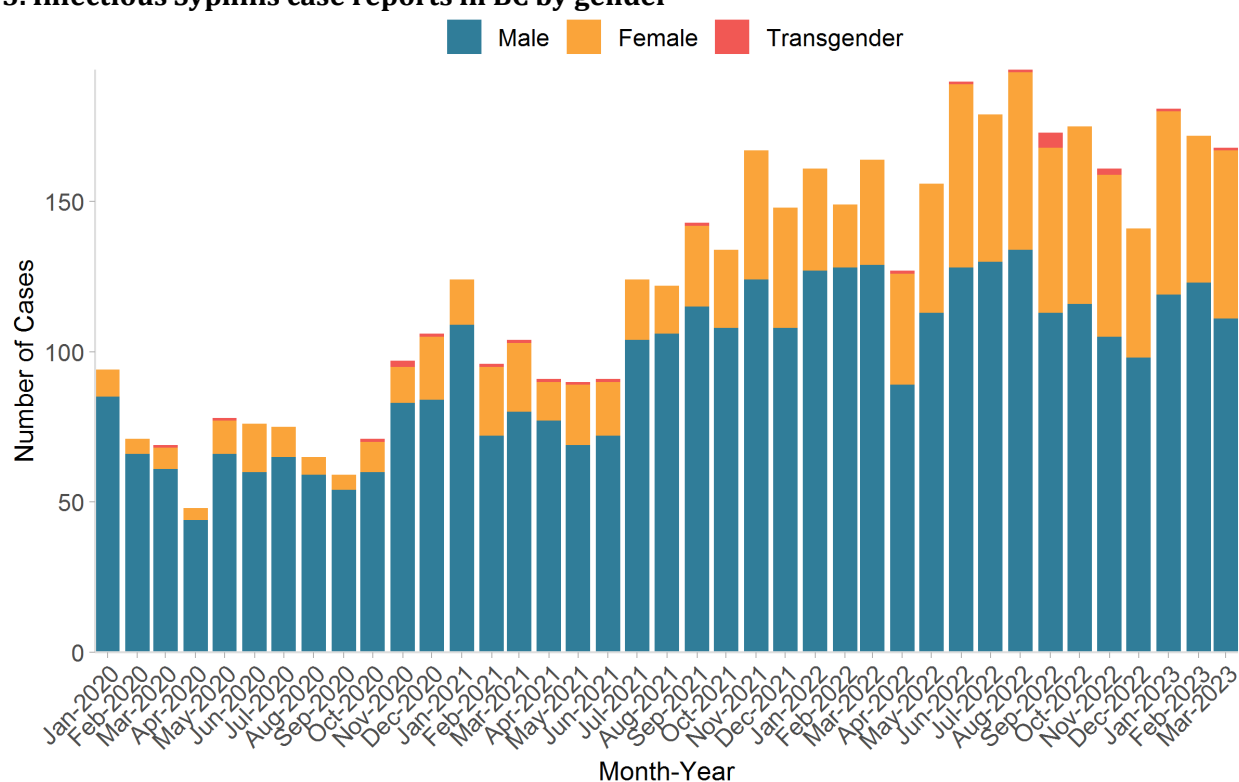
2. Infectious Syphilis case Reports in BC by health authority



Preliminary data and subject to change

Note: Excludes missing and unknown geography. Due to reporting delays, *geographic* trends should be interpreted with caution.

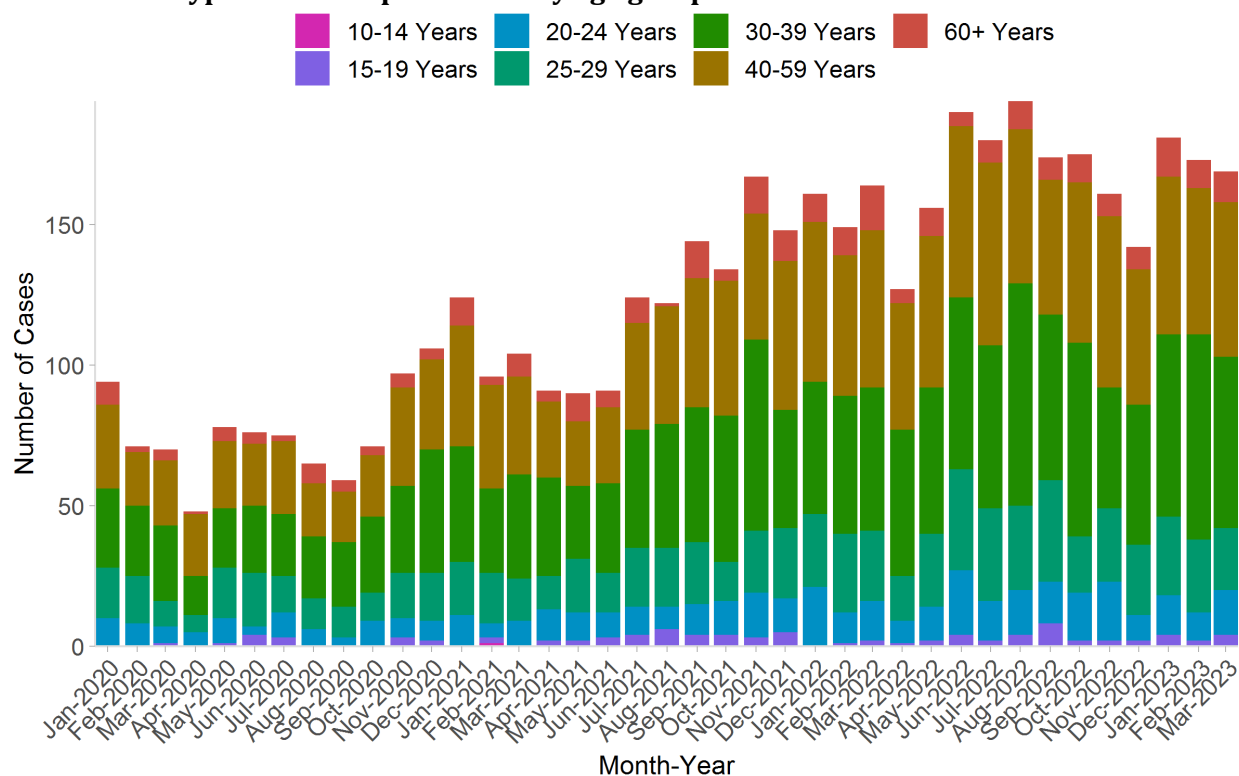
3. Infectious Syphilis case reports in BC by gender



Preliminary data and subject to change

Note: Gender is based on the gender variable values collected in Intrahealth Profile EMR which is structured as male, female, transgender and unknown. Data shown reflects male, female, and transgender responses only.

4. Infectious Syphilis case reports in BC by age group

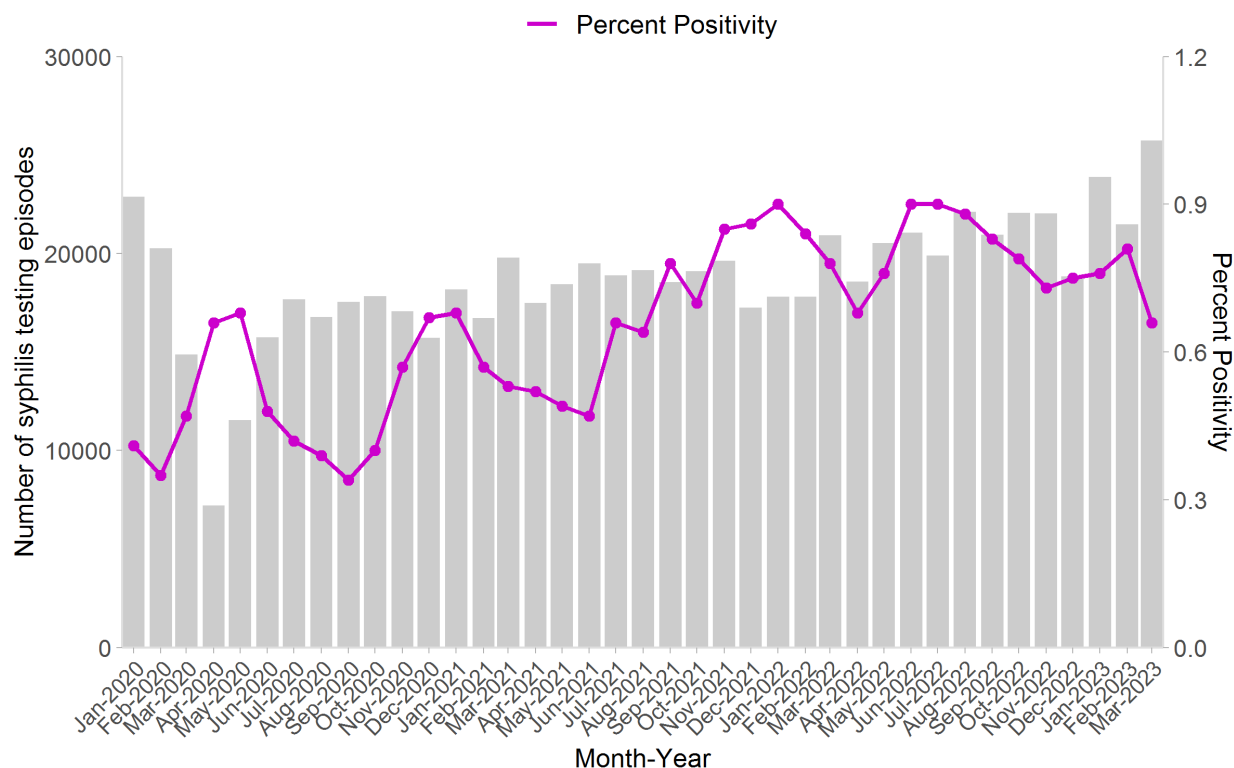


Preliminary data and subject to change

Note: Excludes cases where age could not be calculated due to missing date of birth.

Syphilis Testing Episodes

5.a. Syphilis non-prenatal testing episodes* and percent positivity in BC by month - total

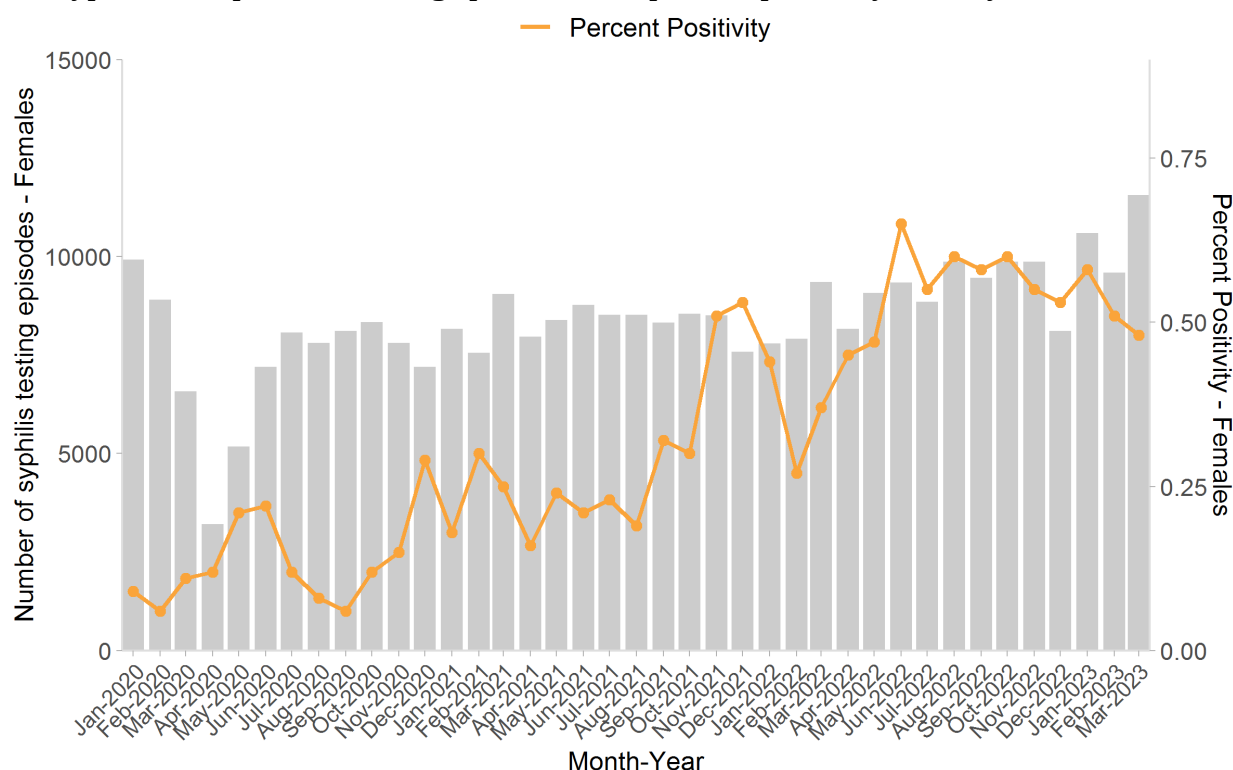


Preliminary data and subject to change

*Testing episode = 30-day window (see technical appendix for further details).

Note: Percent positivity is calculated as the number of infectious syphilis cases over testing episodes, where a testing episode is defined as a 30-day window.

5.b. Syphilis non-prenatal testing episodes* and percent positivity in BC by month - female



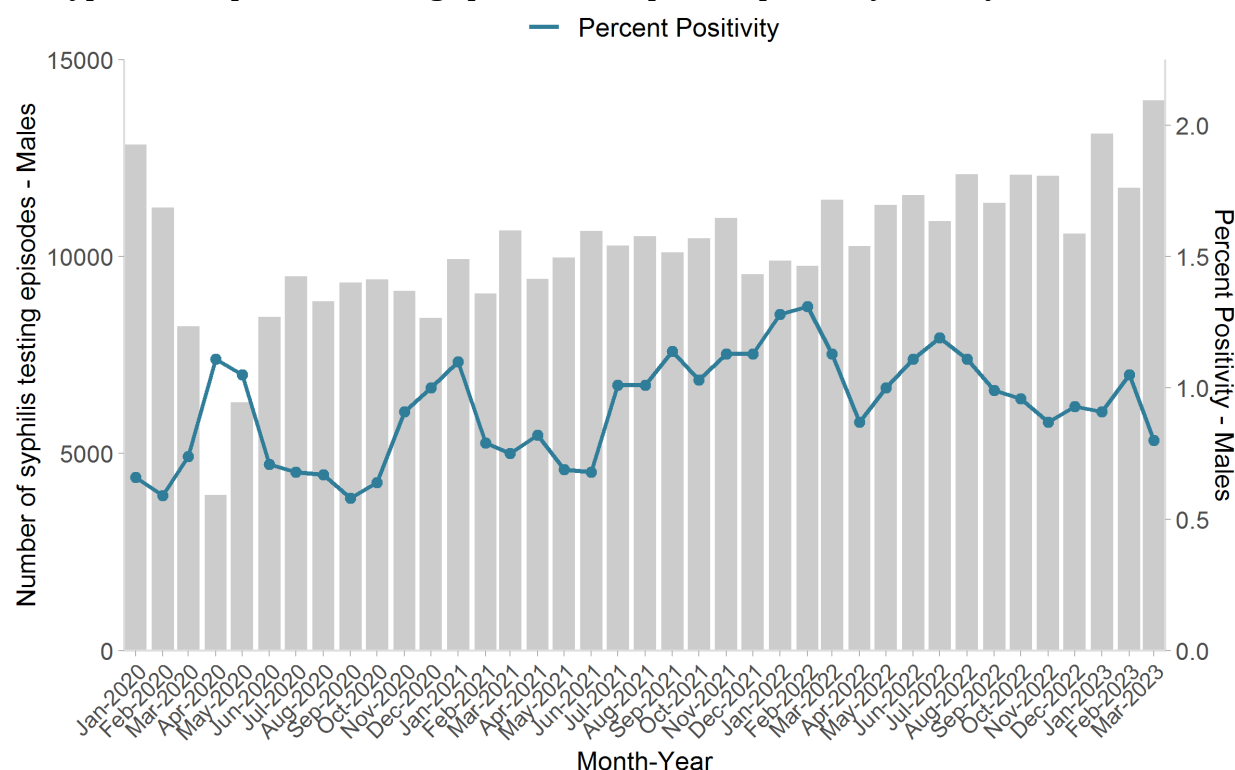
Preliminary data and subject to change

*Testing episode = 30-day window (see technical appendix for further details).

Note: Percent positivity is calculated as the number of infectious syphilis cases over testing episodes, where a testing episode is defined as a 30-day window.

-The number of female syphilis non-prenatal testing episodes is based on sex reported on the laboratory requisition. The number of female infectious syphilis cases is based on gender variable values collected in Intrahealth Profile EMR.

5.c. Syphilis non-prenatal testing episodes* and percent positivity in BC by month - male



Preliminary data and subject to change

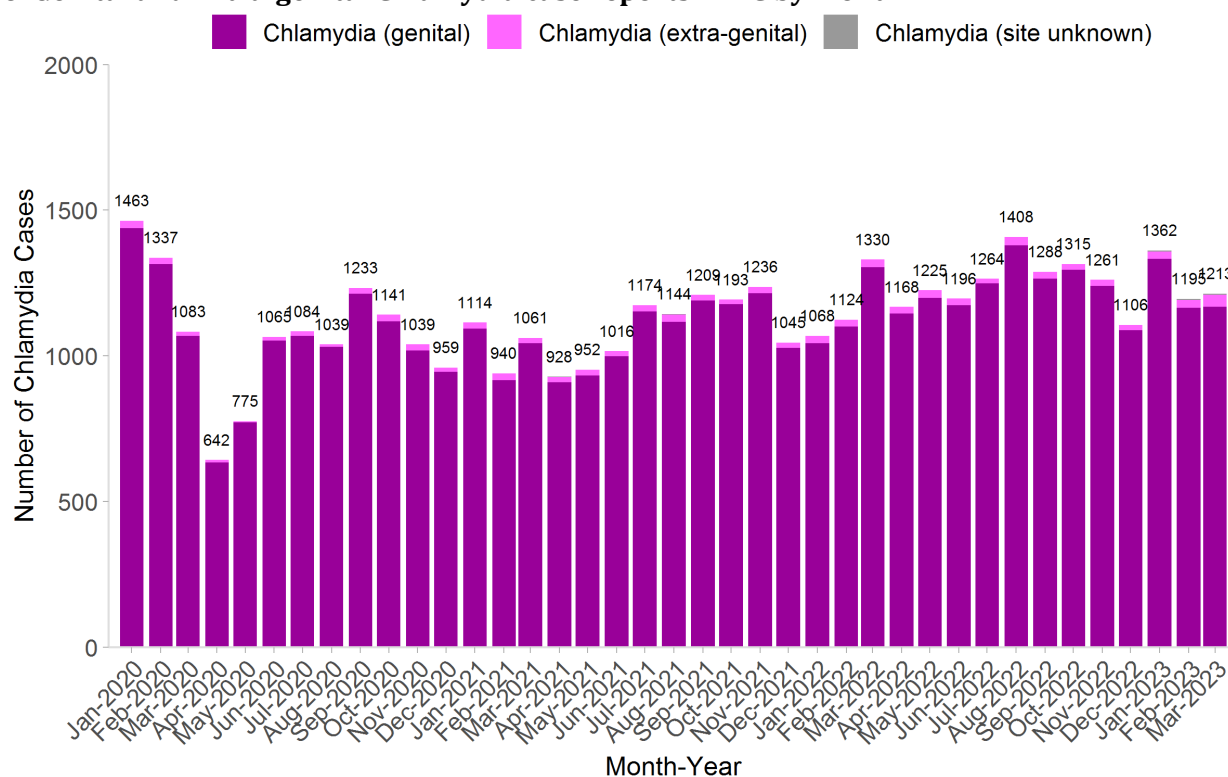
*Testing episode = 30-day window (see technical appendix for further details).

Note: Percent positivity is calculated as the number of infectious syphilis cases over testing episodes, where a testing episode is defined as a 30-day window.

-The number of male syphilis non-prenatal testing episodes is based on sex reported on the laboratory requisition. The number of male infectious syphilis cases is based on gender variable values collected in Intrahealth Profile EMR.

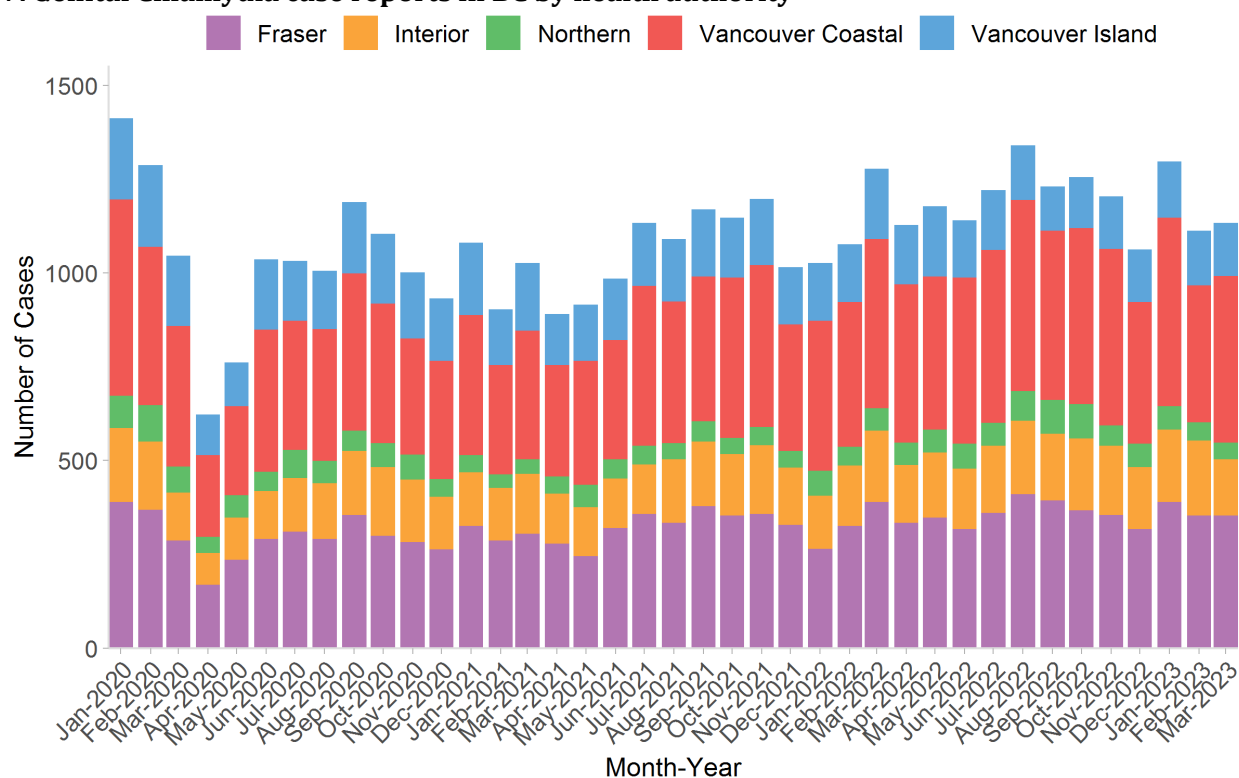
Chlamydia

6. Genital and Extra-genital Chlamydia case reports in BC by month



Preliminary data and subject to change

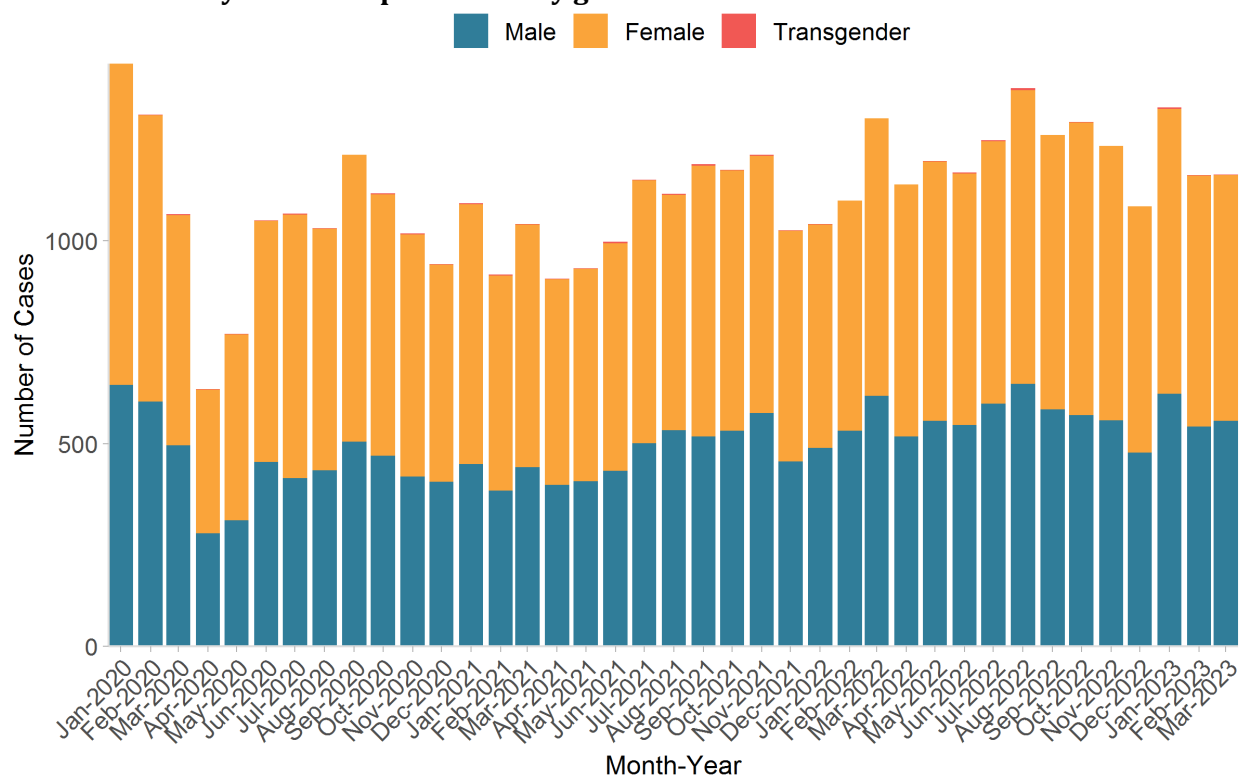
7. Genital Chlamydia case reports in BC by health authority



Preliminary data and subject to change

Note: Excludes missing and unknown geography.

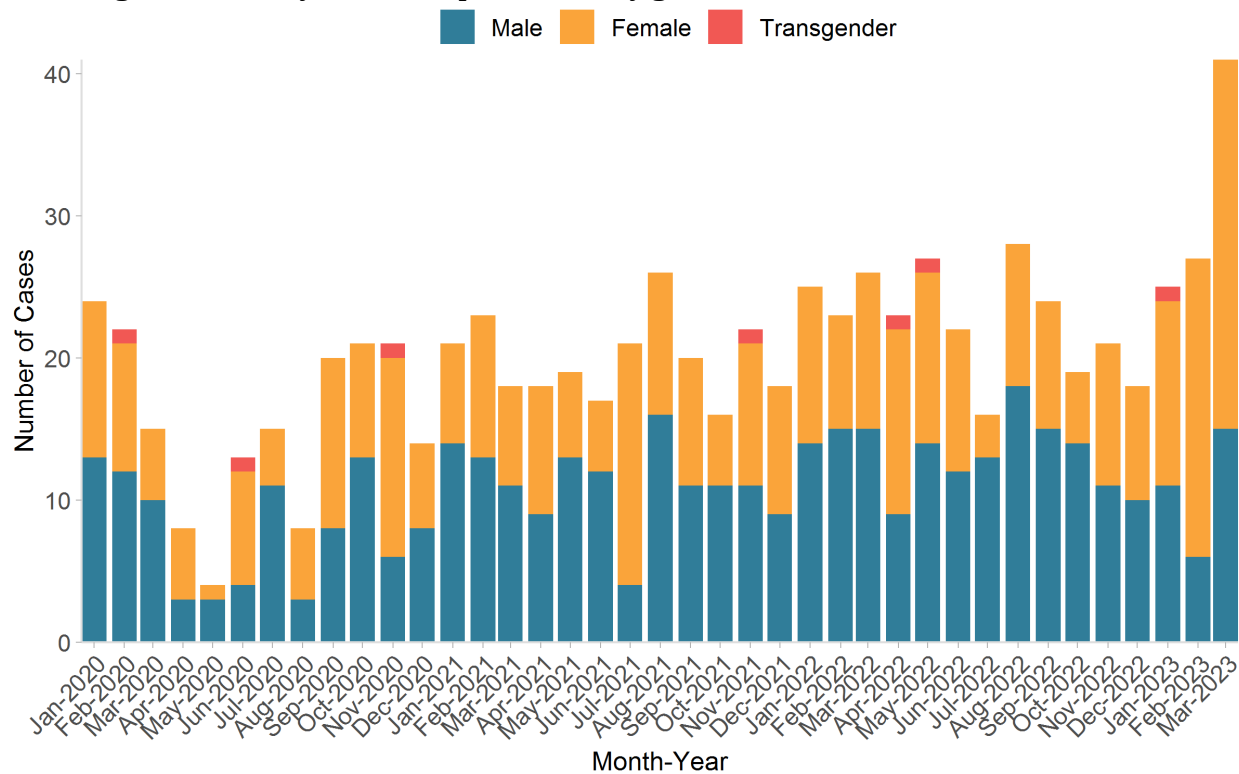
8. Genital Chlamydia case reports in BC by gender



Preliminary data and subject to change

Note: Gender is based on the gender variable values collected in Intrahealth Profile EMR which is structured as male, female, transgender and unknown. Data shown reflects male, female, and transgender responses only.

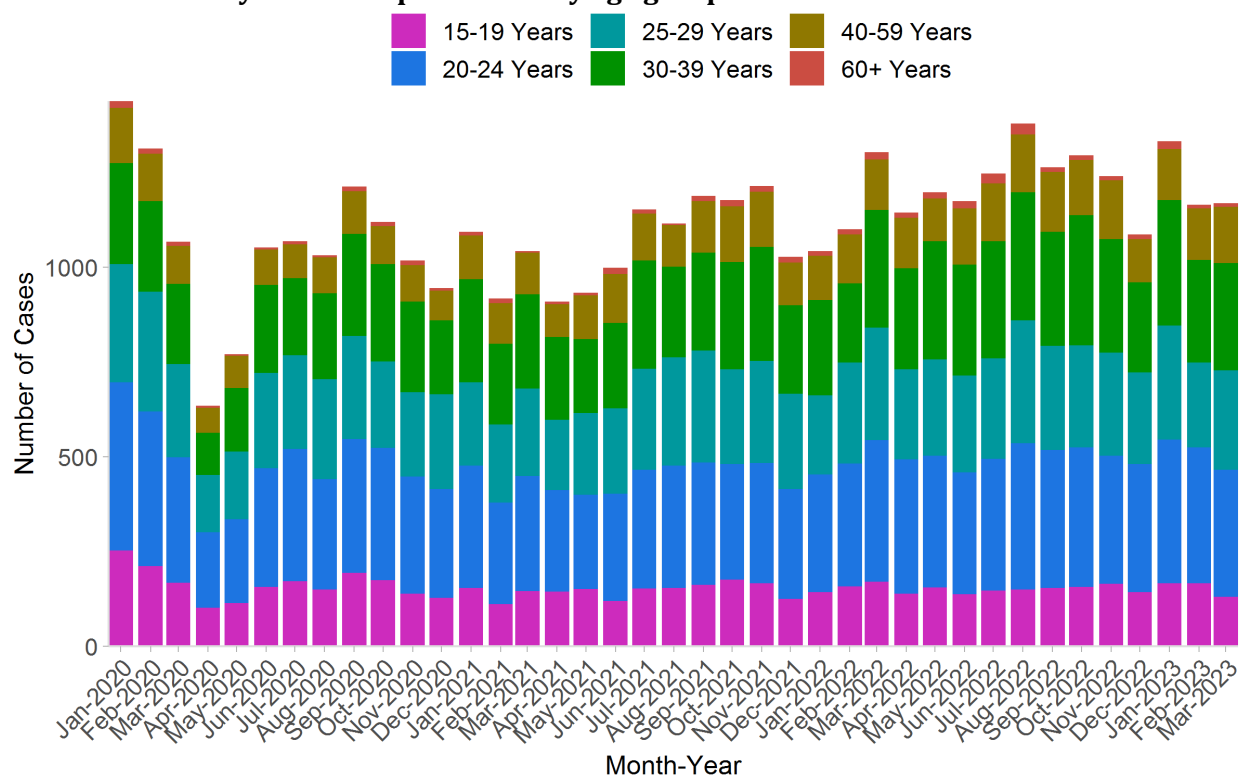
9. Extra-genital Chlamydia case reports in BC by gender



Preliminary data and subject to change

Note: Gender is based on the gender variable values collected in Intrahealth Profile EMR which is structured as male, female, transgender and unknown. Data shown reflects male, female, and transgender responses only.

10. Genital Chlamydia case reports in BC by age group

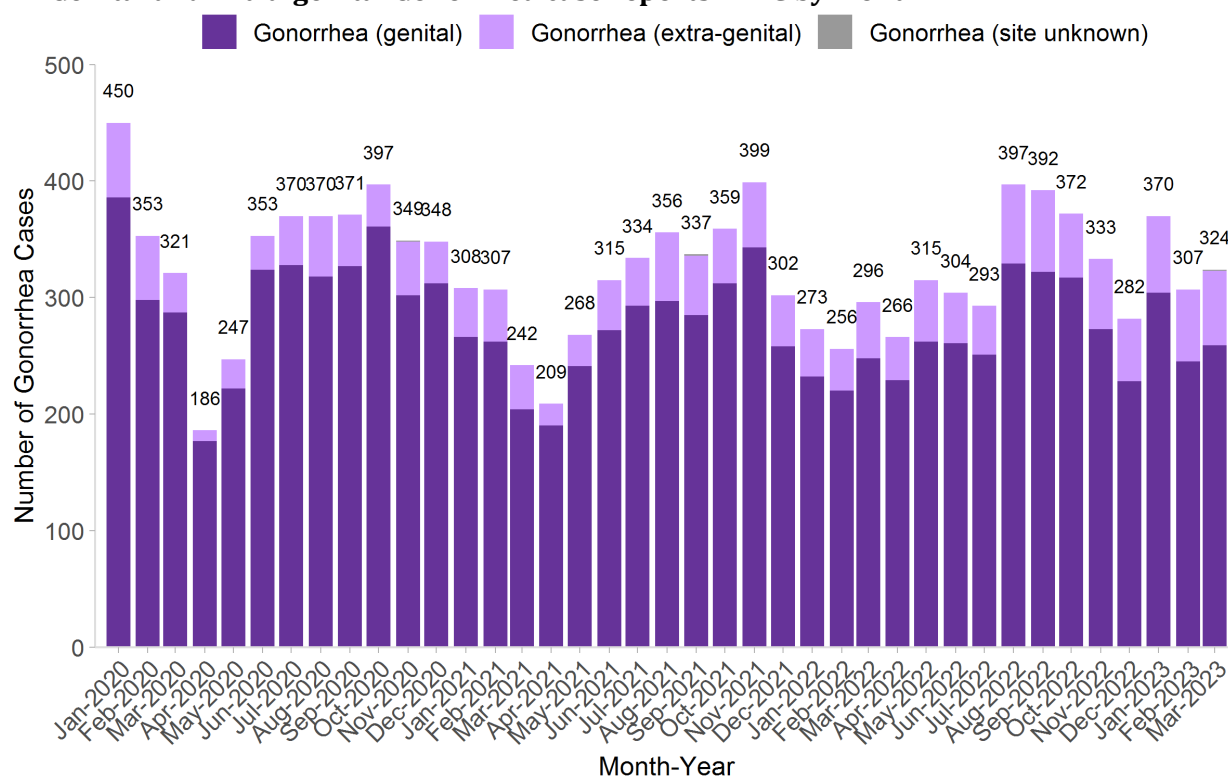


Preliminary data and subject to change

Note: Excludes cases where age could not be calculated due to missing date of birth.

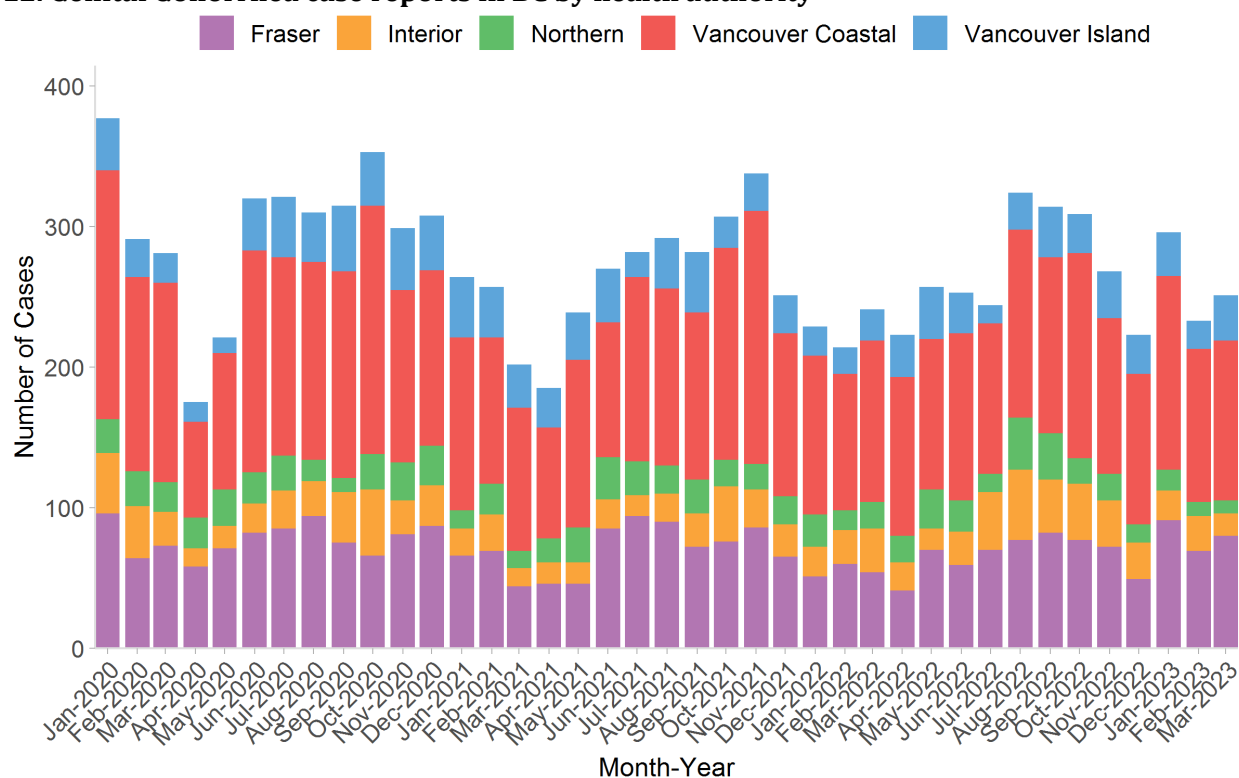
Gonorrhea

11. Genital and Extra-genital Gonorrhea case reports in BC by month



Preliminary data and subject to change

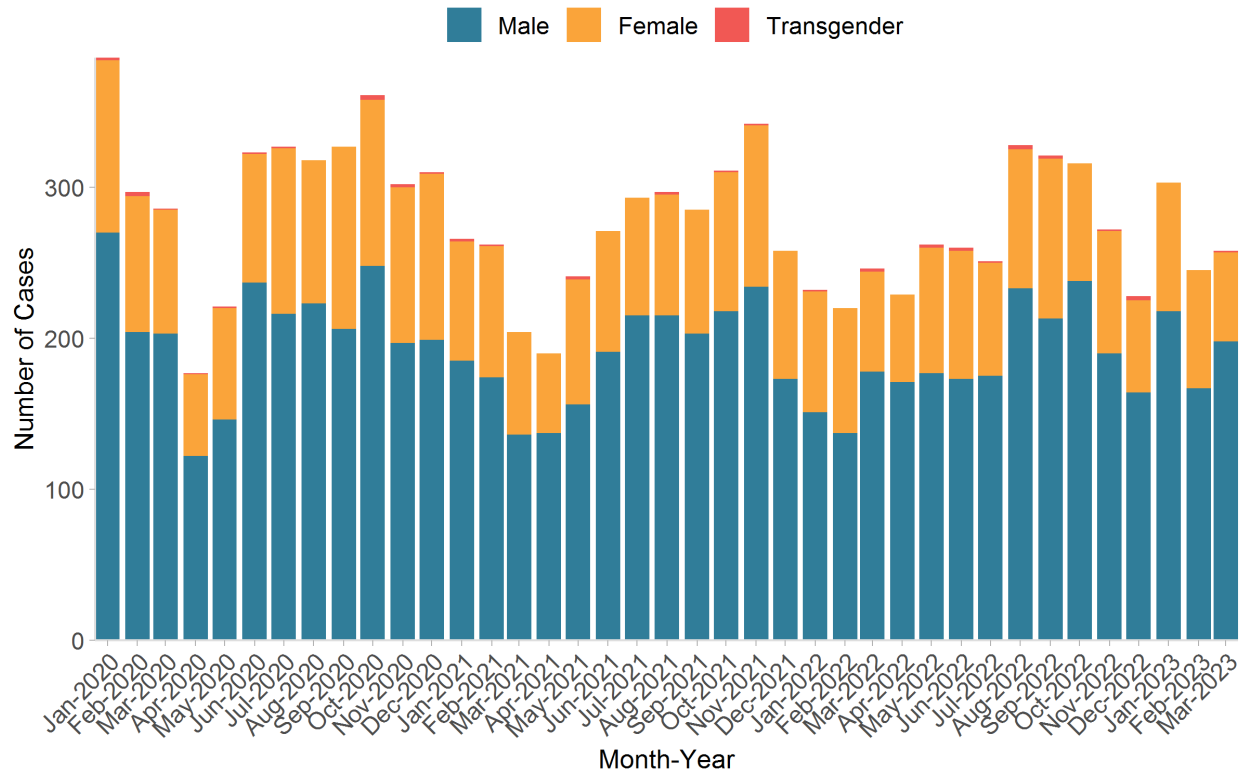
12. Genital Gonorrhea case reports in BC by health authority



Preliminary data and subject to change

Note: Excludes missing and unknown geography.

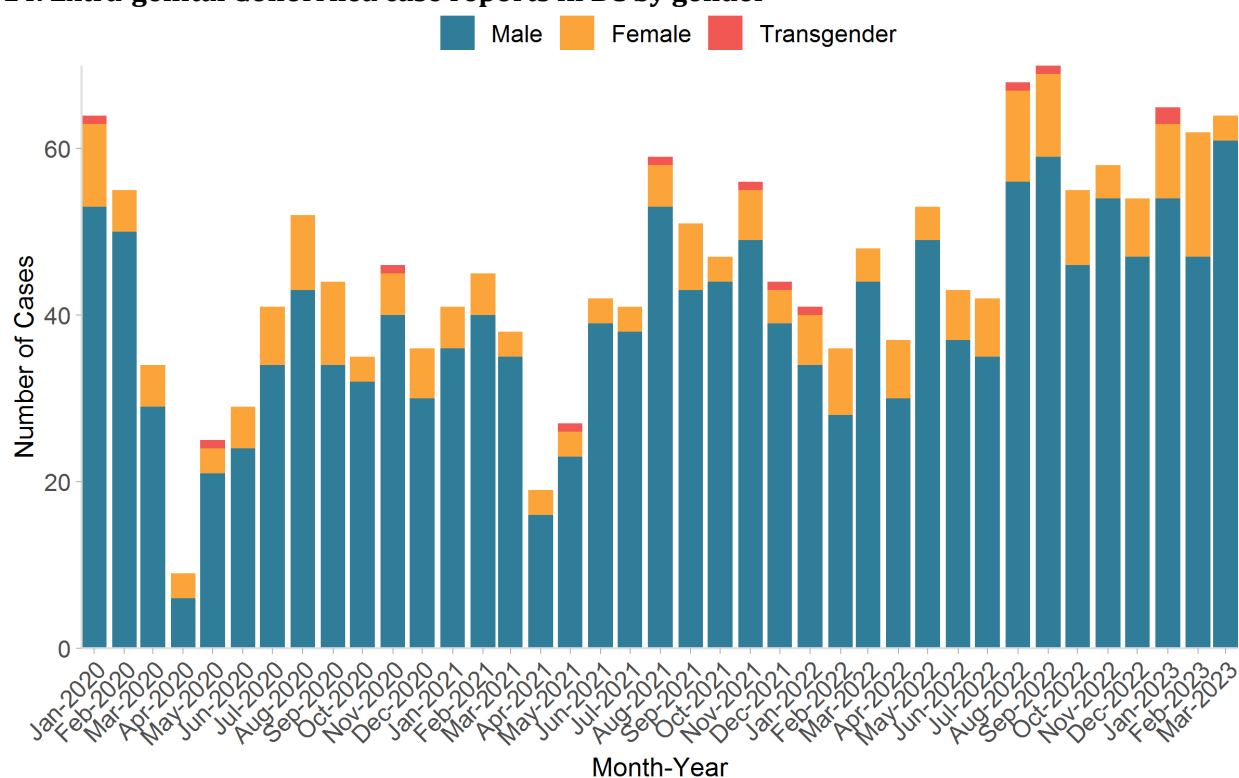
13. Genital Gonorrhea case reports in BC by gender



Preliminary data and subject to change

Note: Gender is based on the gender variable values collected in Intrahealth Profile EMR which is structured as male, female, transgender and unknown. Data shown reflects male, female, and transgender responses only.

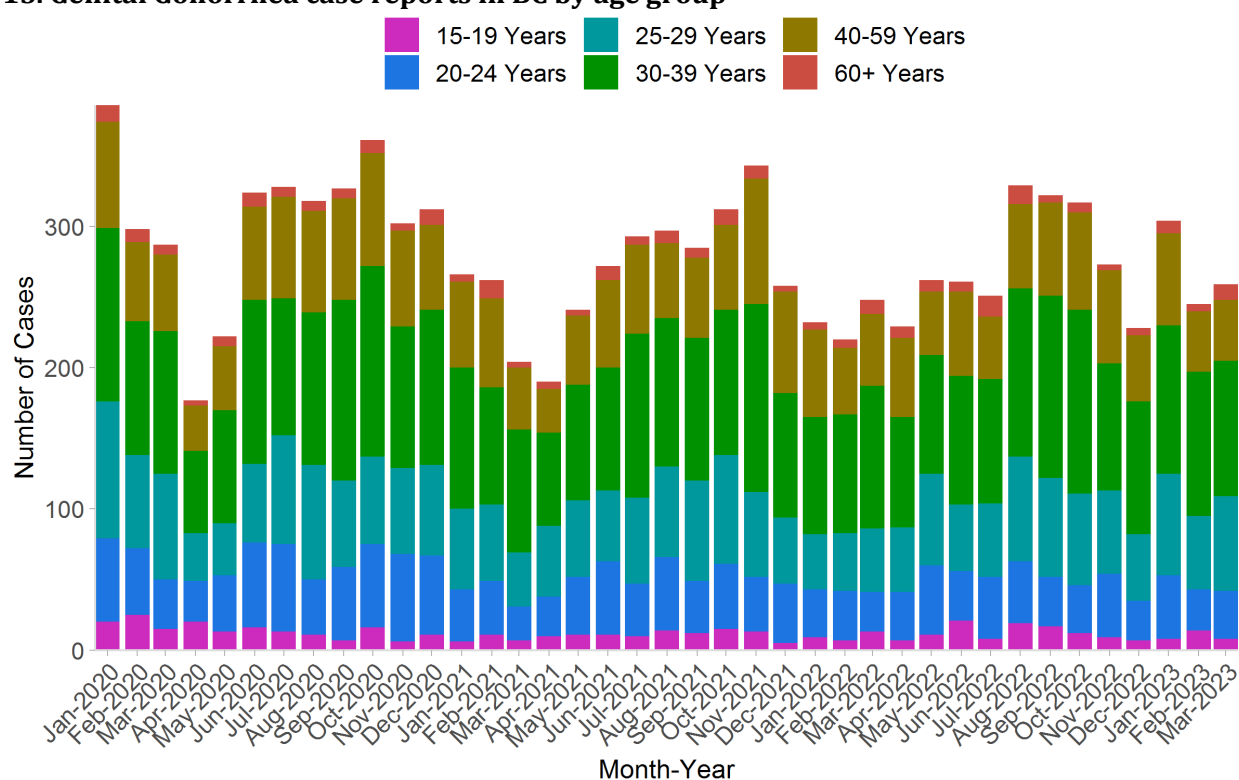
14. Extra-genital Gonorrhea case reports in BC by gender



Preliminary data and subject to change

Note: Gender is based on the gender variable values collected in Intrahealth Profile EMR which is structured as male, female, transgender and unknown. Data shown reflects male, female, and transgender responses only.

15. Genital Gonorrhea case reports in BC by age group

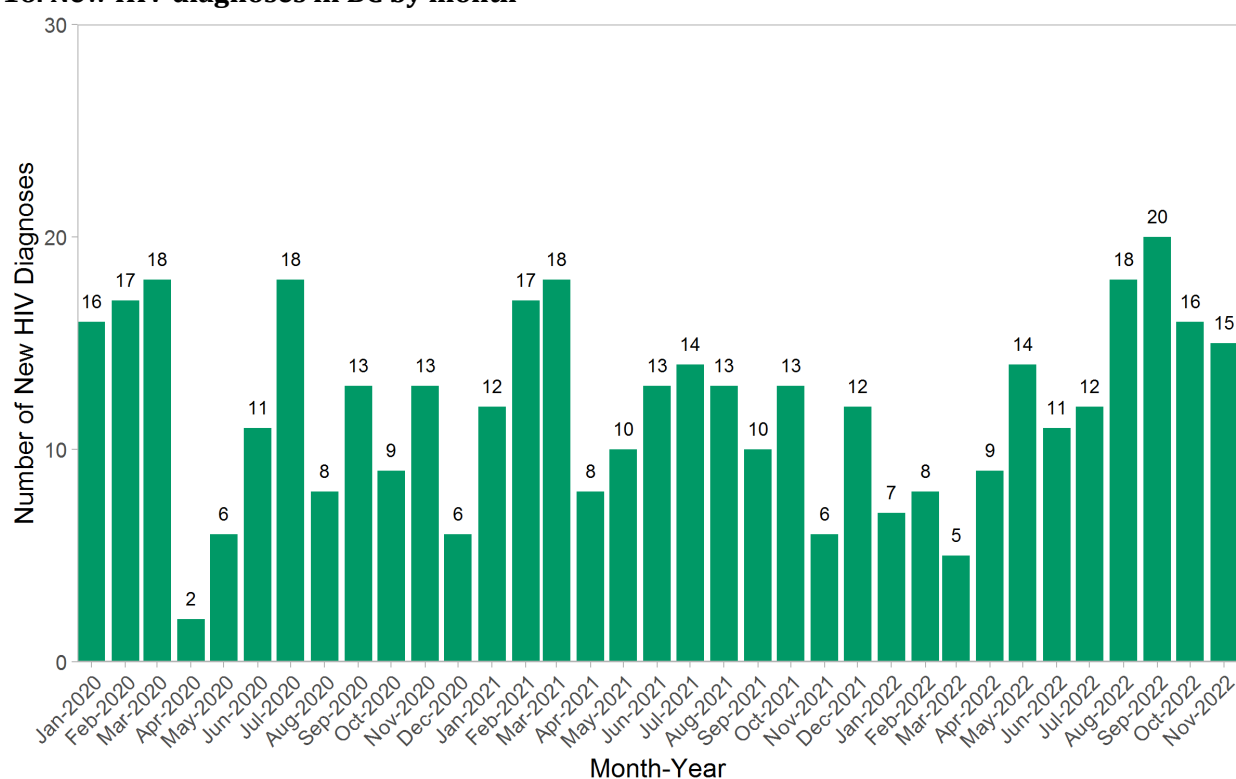


Preliminary data and subject to change

Note: Excludes cases where age could not be calculated due to missing date of birth.

HIV

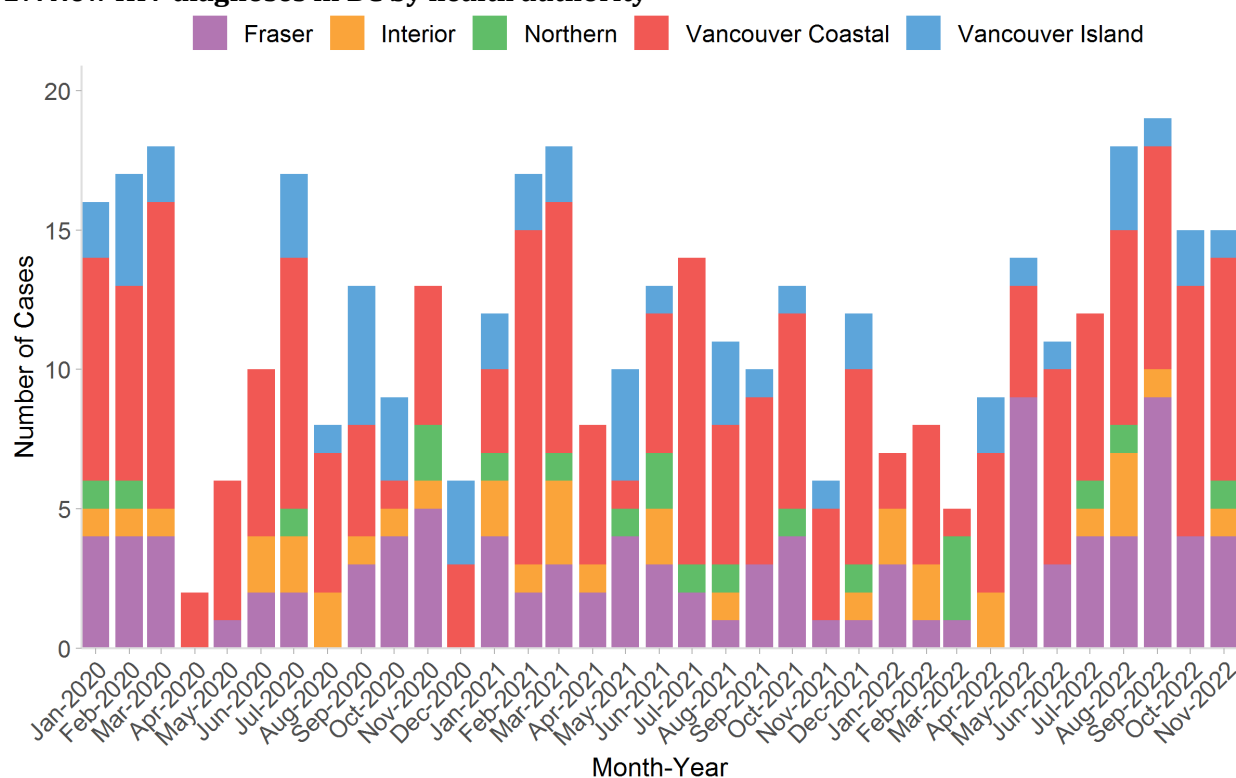
16. New HIV diagnoses in BC by month



Preliminary data and subject to change

Note: There will be a delay in HIV surveillance data while we work on surveillance system data flows and validation. We hope to provide more current data as soon as possible. Until then, data are provided to November 2022 (inclusive).

17. New HIV diagnoses in BC by health authority

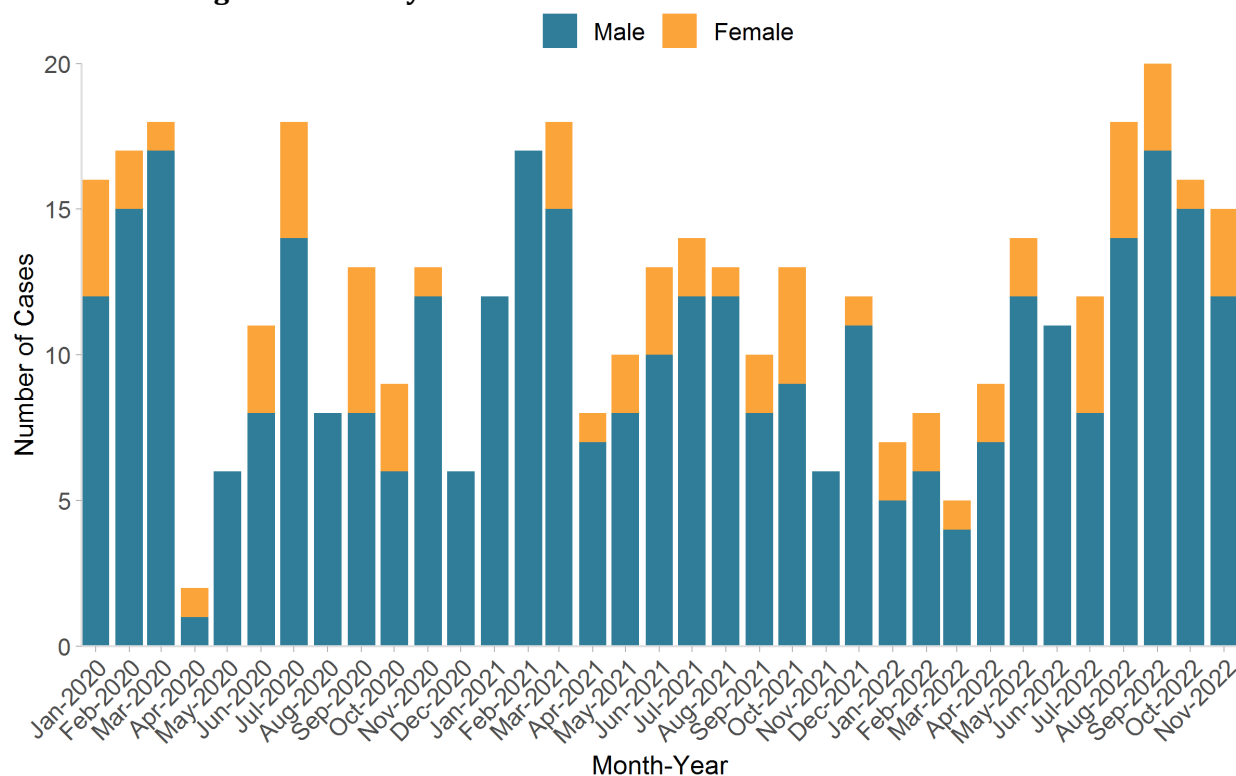


Preliminary data and subject to change

Note: Excludes missing and unknown geography.

-There will be a delay in HIV surveillance data while we work on surveillance system data flows and validation. We hope to provide more current data as soon as possible. Until then, data are provided to November 2022 (inclusive).

18. New HIV diagnoses in BC by sex

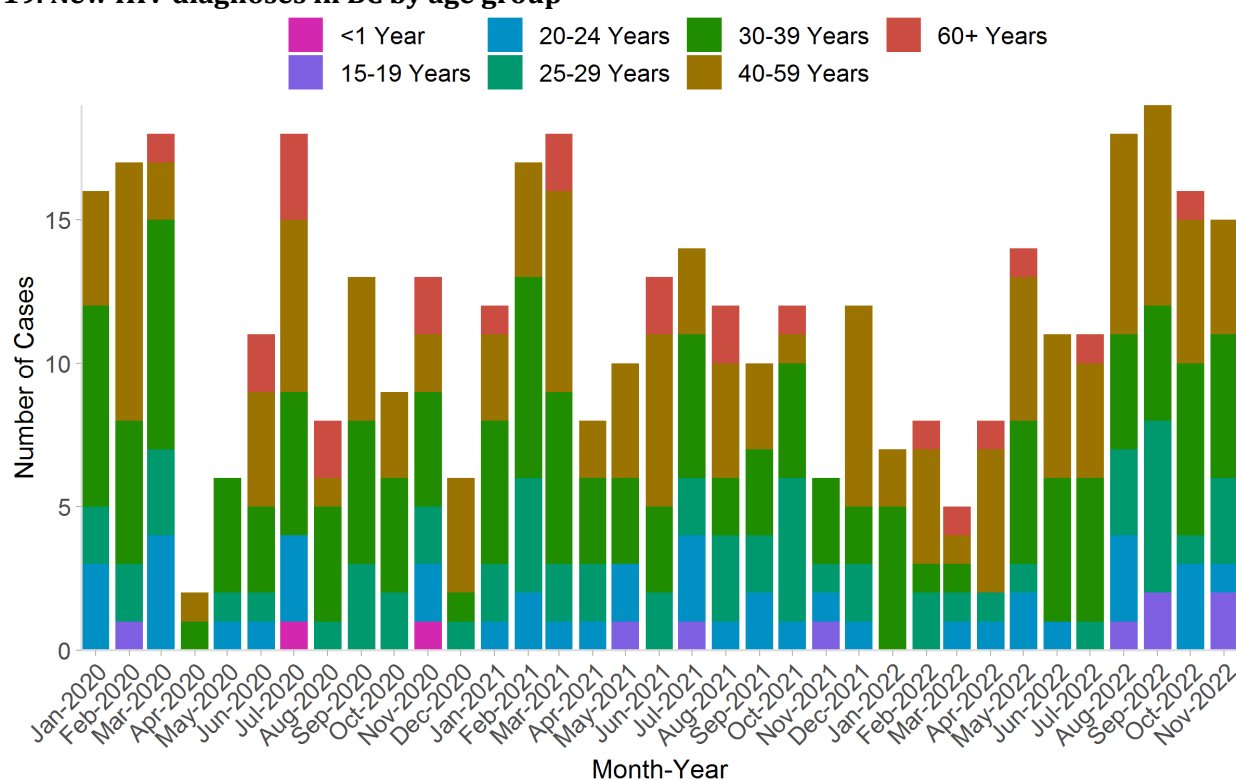


Preliminary data and subject to change

Note: Sex is based on the gender variable values collected in the HIV/AIDS Information System and the sex variable values collected in the laboratory information system. Data shown reflects male and female responses only.

-There will be a delay in HIV surveillance data while we work on surveillance system data flows and validation. We hope to provide more current data as soon as possible. Until then, data are provided to November 2022 (inclusive).

19. New HIV diagnoses in BC by age group



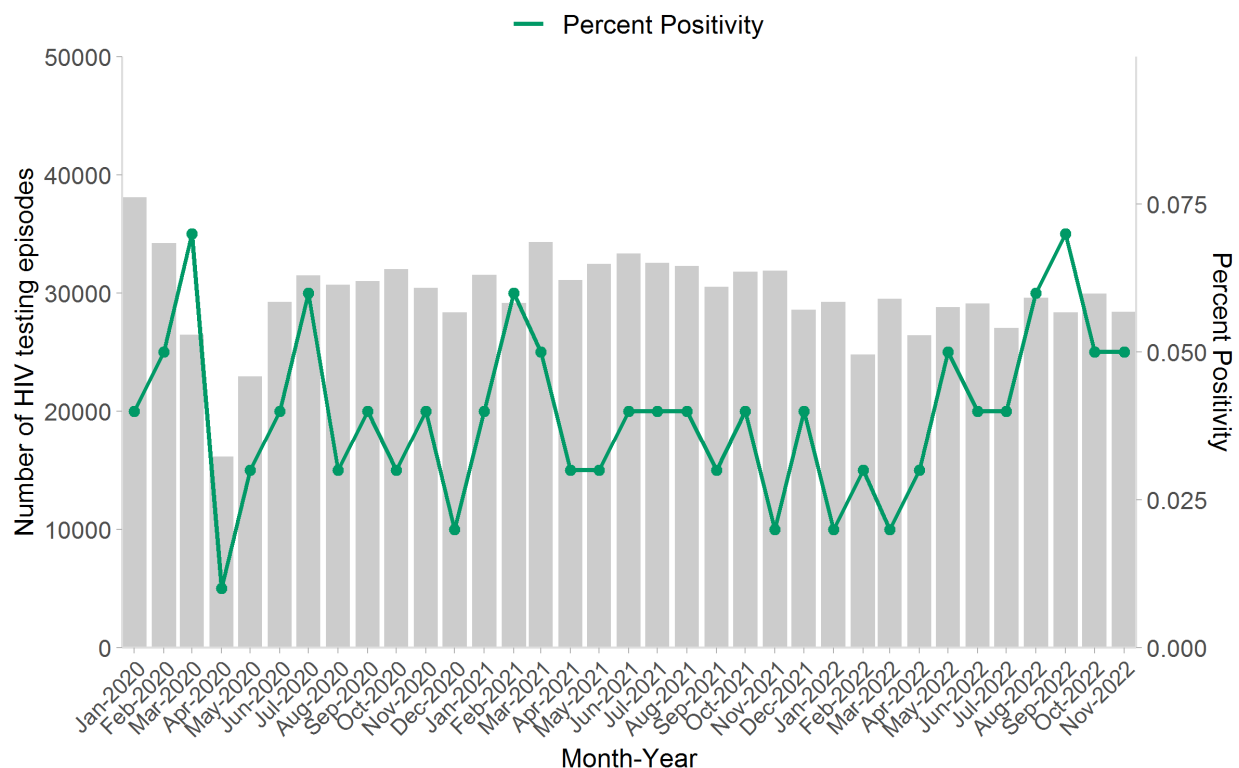
Preliminary data and subject to change

Note: Excludes cases where age could not be calculated due to missing date of birth.

-There will be a delay in HIV surveillance data while we work on surveillance system data flows and validation. We hope to provide more current data as soon as possible. Until then, data are provided to November 2022 (inclusive).

HIV Testing Episodes

20.a. HIV non-prenatal testing episodes* and percent positivity in BC by month - total



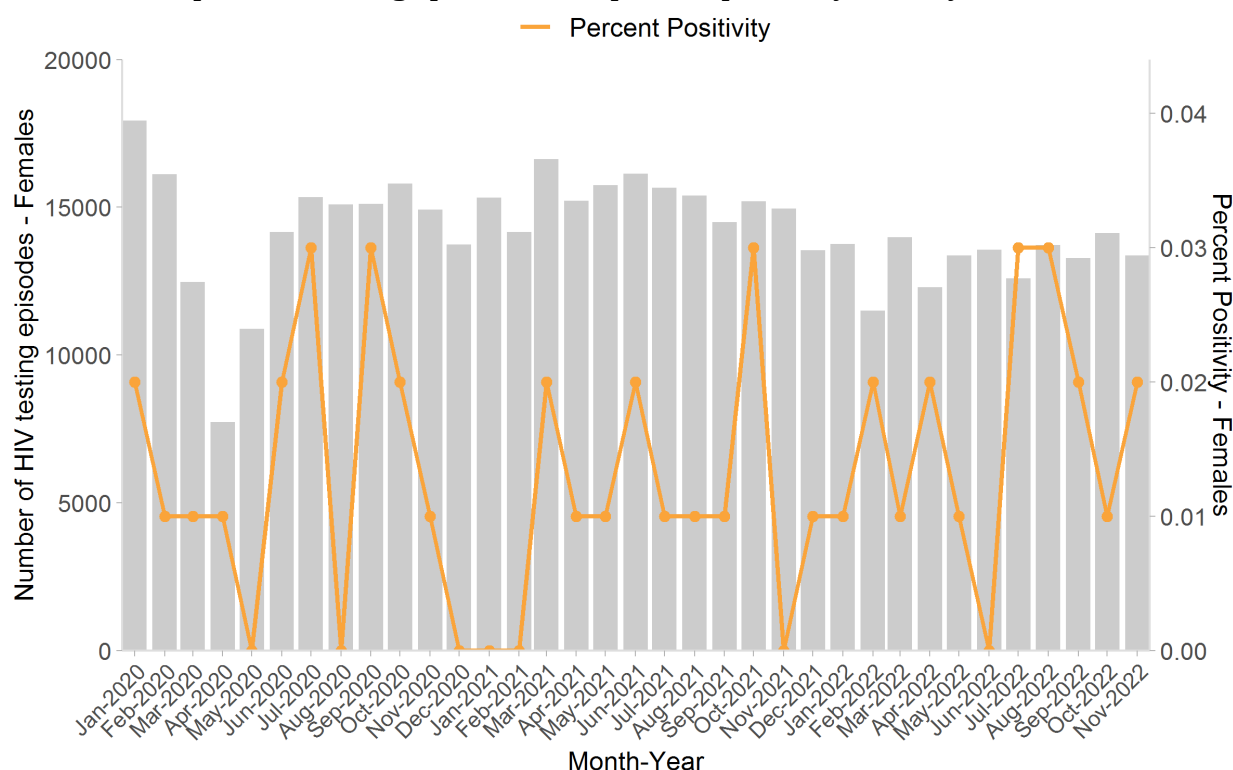
Preliminary data and subject to change

*Testing episode = 30-day window (see technical appendix for further details).

Note: Percent positivity is calculated as the number of HIV cases over testing episodes, where a testing episode is defined as a 30-day window.

-There will be a delay in HIV surveillance data while we work on surveillance system data flows and validation. We hope to provide more current data as soon as possible. Until then, data are provided to November 2022 (inclusive).

20.b. HIV non-prenatal testing episodes* and percent positivity in BC by month - female



Preliminary data and subject to change

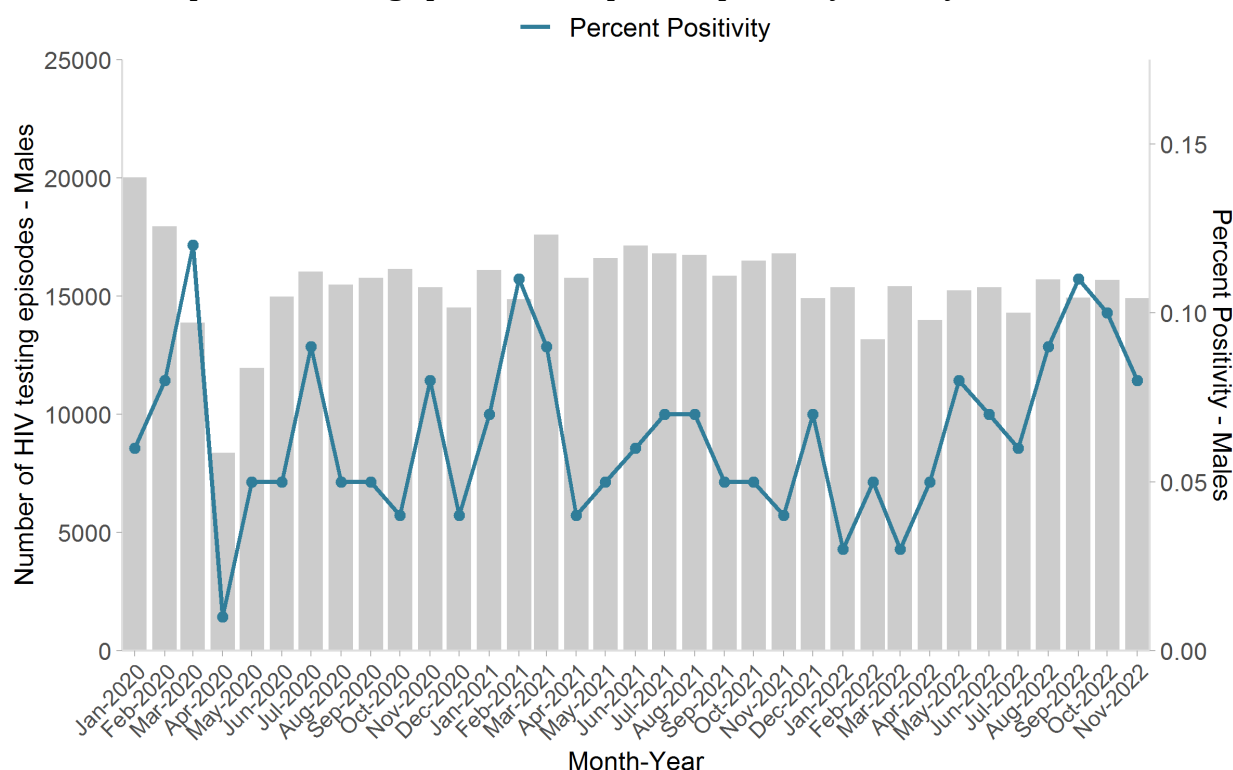
*Testing episode = 30-day window (see technical appendix for further details).

Note: Percent positivity is calculated as the number of HIV cases over testing episodes, where a testing episode is defined as a 30-day window.

-The number of female HIV cases is based on the gender variable values collected on the HIV case report form and the sex variable reported on the laboratory requisition.

-There will be a delay in HIV surveillance data while we work on surveillance system data flows and validation. We hope to provide more current data as soon as possible. Until then, data are provided to November 2022 (inclusive).

20.c. HIV non-prenatal testing episodes* and percent positivity in BC by month - male



Preliminary data and subject to change

*Testing episode = 30-day window (see technical appendix for further details).

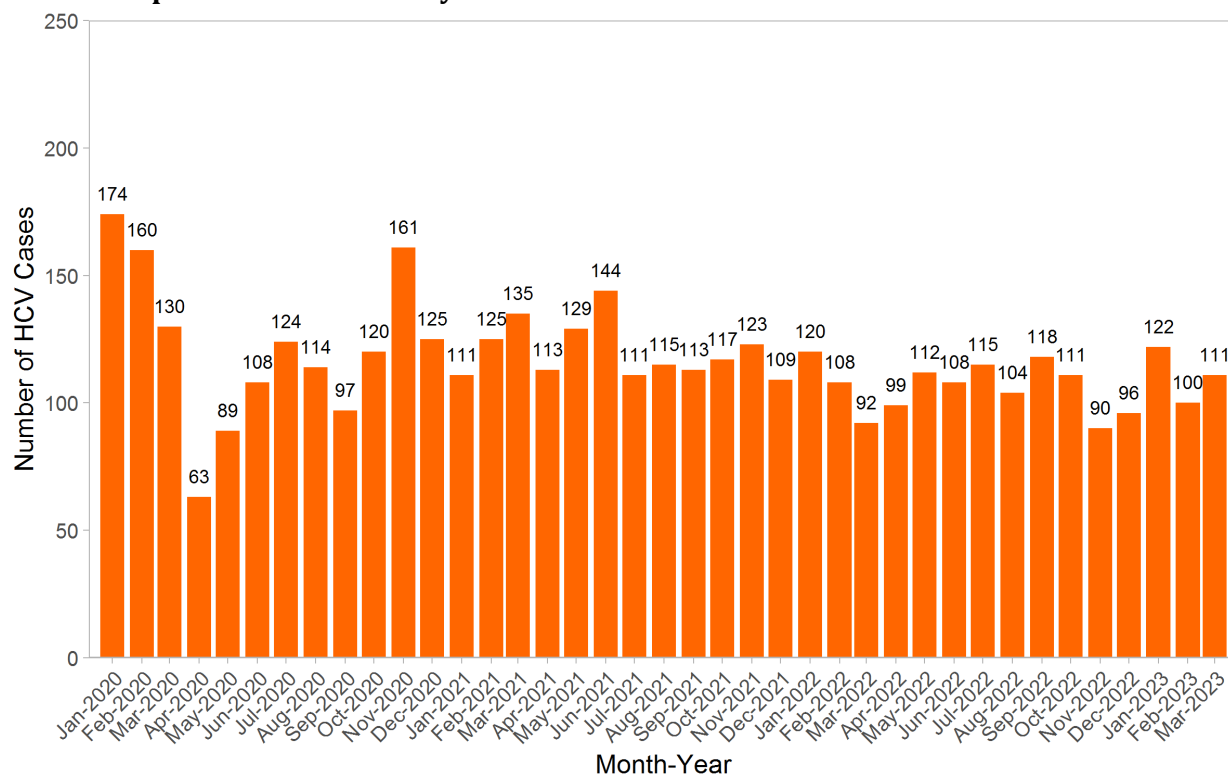
Note: Percent positivity is calculated as the number of HIV cases over testing episodes, where a testing episode is defined as a 30-day window.

-The number of male HIV cases is based on the gender variable values collected on the HIV case report form and the sex variable reported on the laboratory requisition.

-There will be a delay in HIV surveillance data while we work on surveillance system data flows and validation. We hope to provide more current data as soon as possible. Until then, data are provided to November 2022 (inclusive).

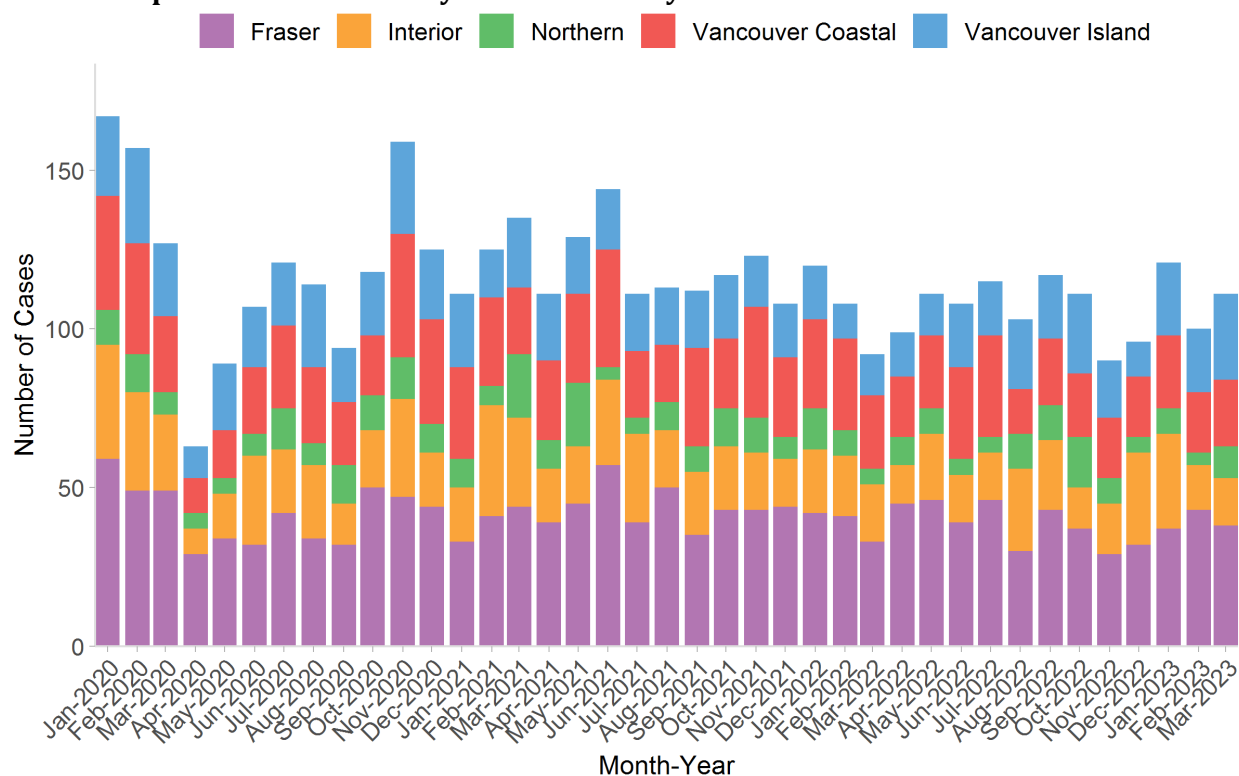
Hepatitis C

21. New Hepatitis C cases in BC by month



Preliminary data and subject to change

22. New Hepatitis C cases in BC by health authority

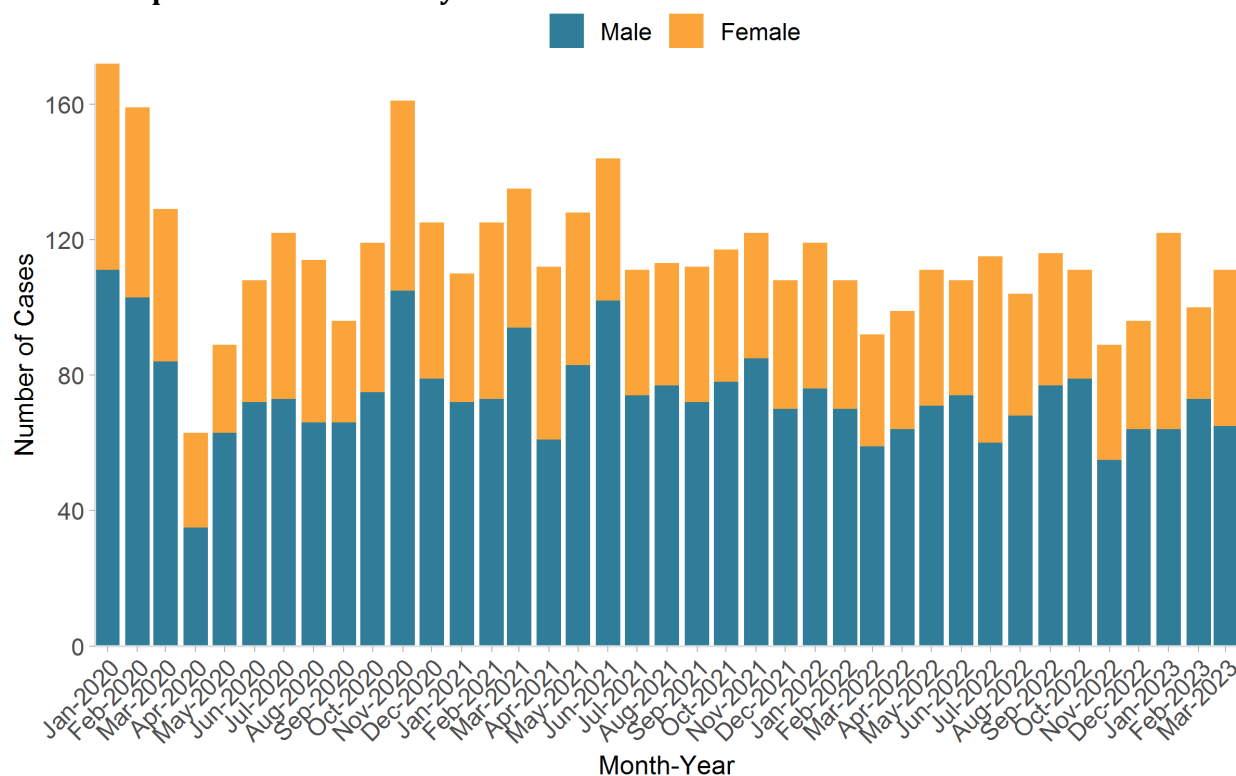


Preliminary data and subject to change

Note: Excludes missing and unknown health authority geography.

-The large number of correctional facilities in Fraser Health may attribute Hepatitis C cases to Fraser Health when the cases' permanent residence may be outside of Fraser Health.

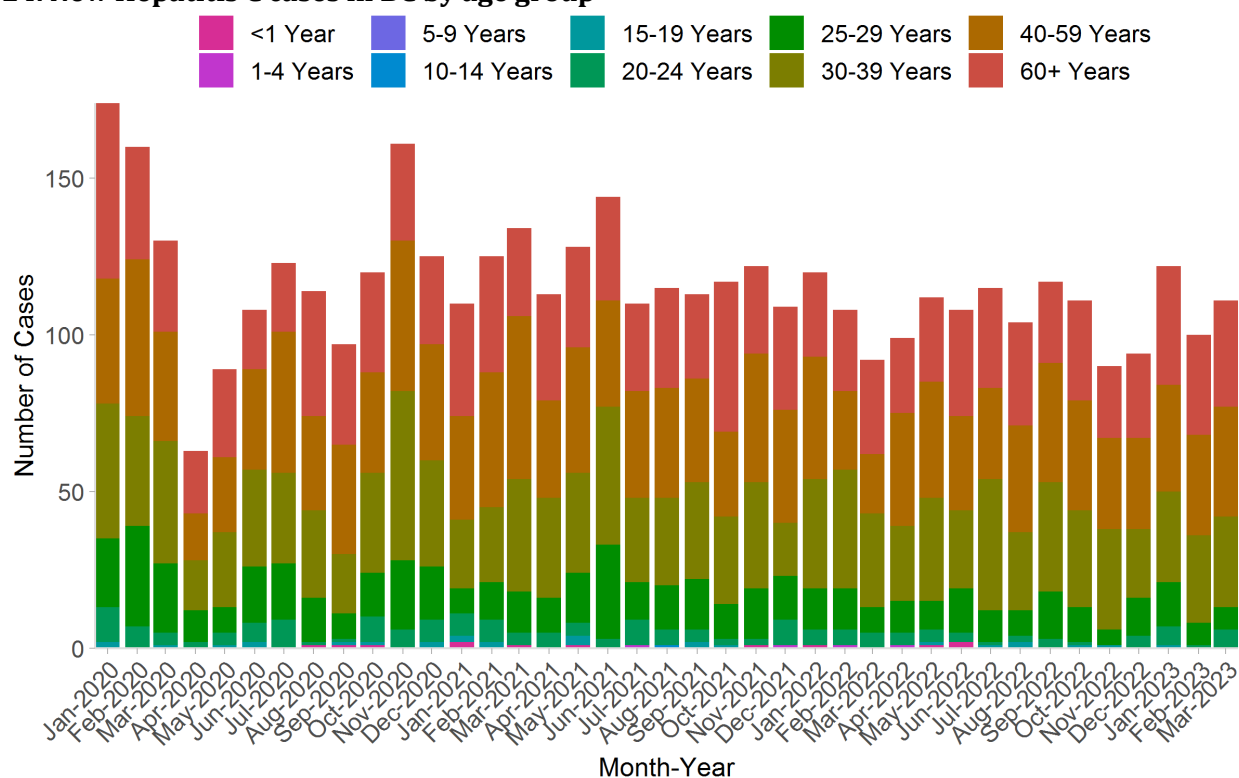
23. New Hepatitis C cases in BC by sex



Preliminary data and subject to change

Note: Sex is based on the sex variable values collected in the laboratory information system. Data shown reflects male and female responses only.

24. New Hepatitis C cases in BC by age group

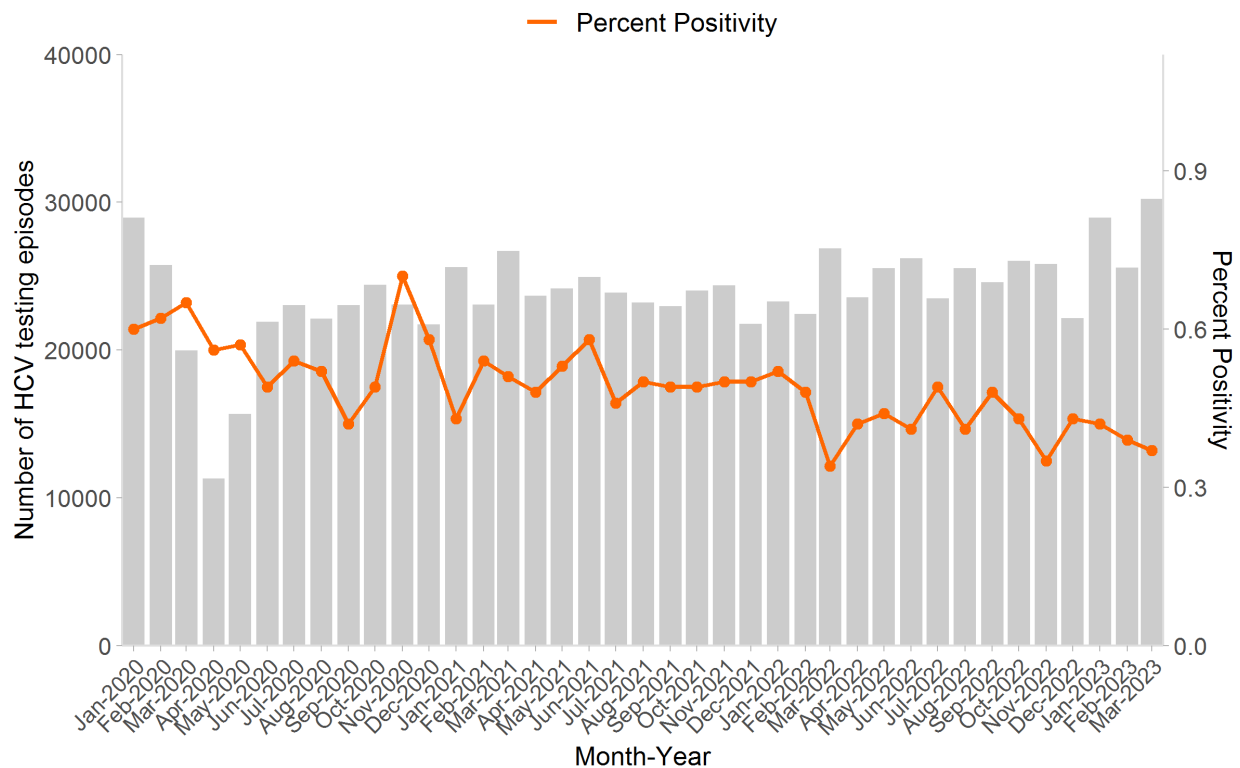


Preliminary data and subject to change

Note: Excludes cases where age could not be calculated due to missing date of birth.

Hepatitis C Antibody Testing Episodes

25.a. HCV antibody testing episodes* and percent positivity in BC by month - total

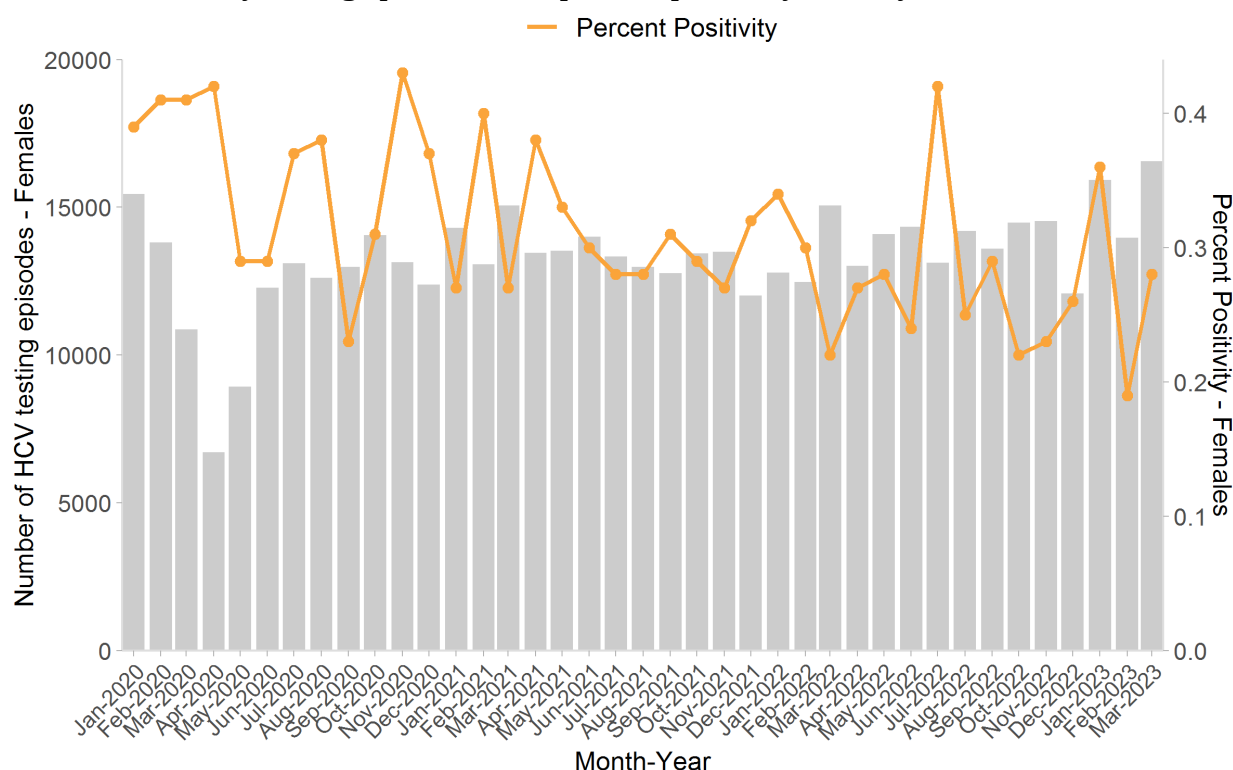


Preliminary data and subject to change

*Antibody testing episode = 1-day window (see technical appendix for further details).

Note: Percent positivity is calculated as the number of HCV cases over antibody testing episodes, where an antibody testing episode is defined as a 1-day window.

25.b. HCV antibody testing episodes* and percent positivity in BC by month - female



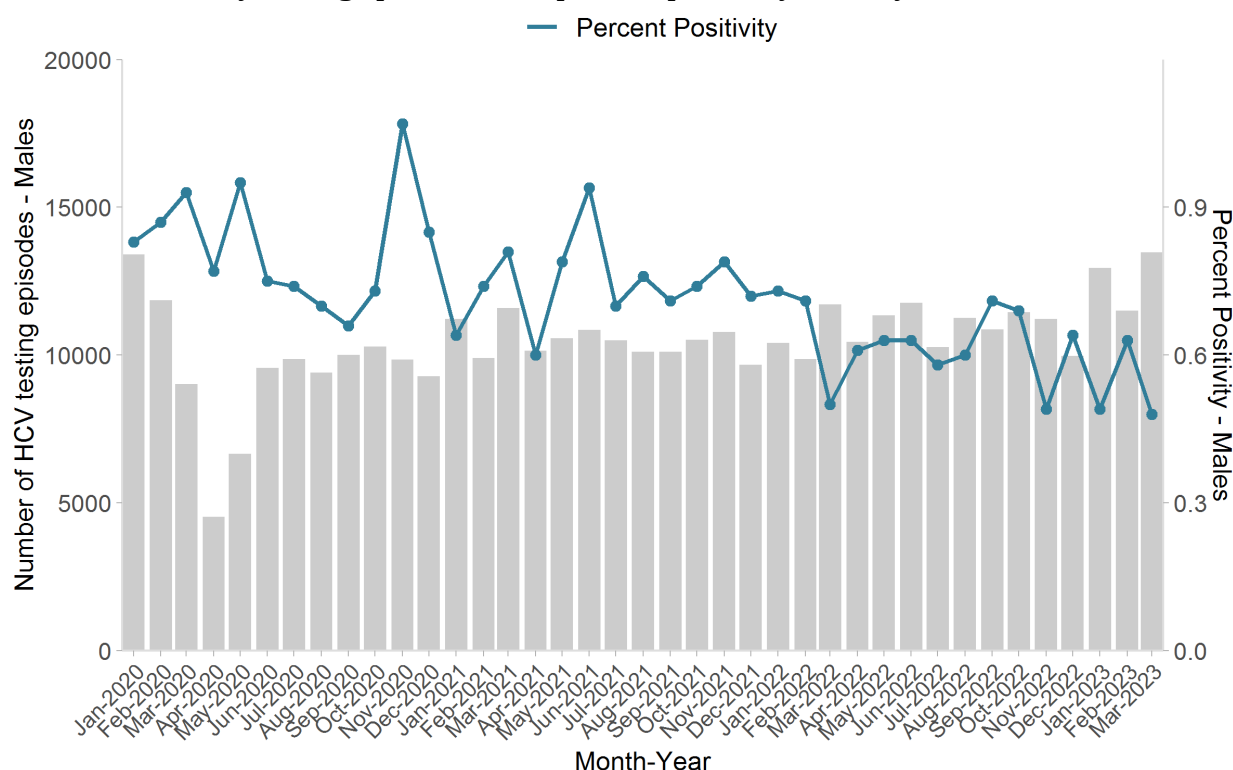
Preliminary data and subject to change

*Antibody testing episode = 1-day window (see technical appendix for further details).

Note: Percent positivity is calculated as the number of HCV cases over antibody testing episodes, where an antibody testing episode is defined as a 1-day window.

-The number of female HCV antibody testing episodes is based on sex reported on the laboratory requisition. The number of female HCV cases is based on the sex variable values collected in the laboratory information system.

25.c. HCV antibody testing episodes* and percent positivity in BC by month - male



Preliminary data and subject to change

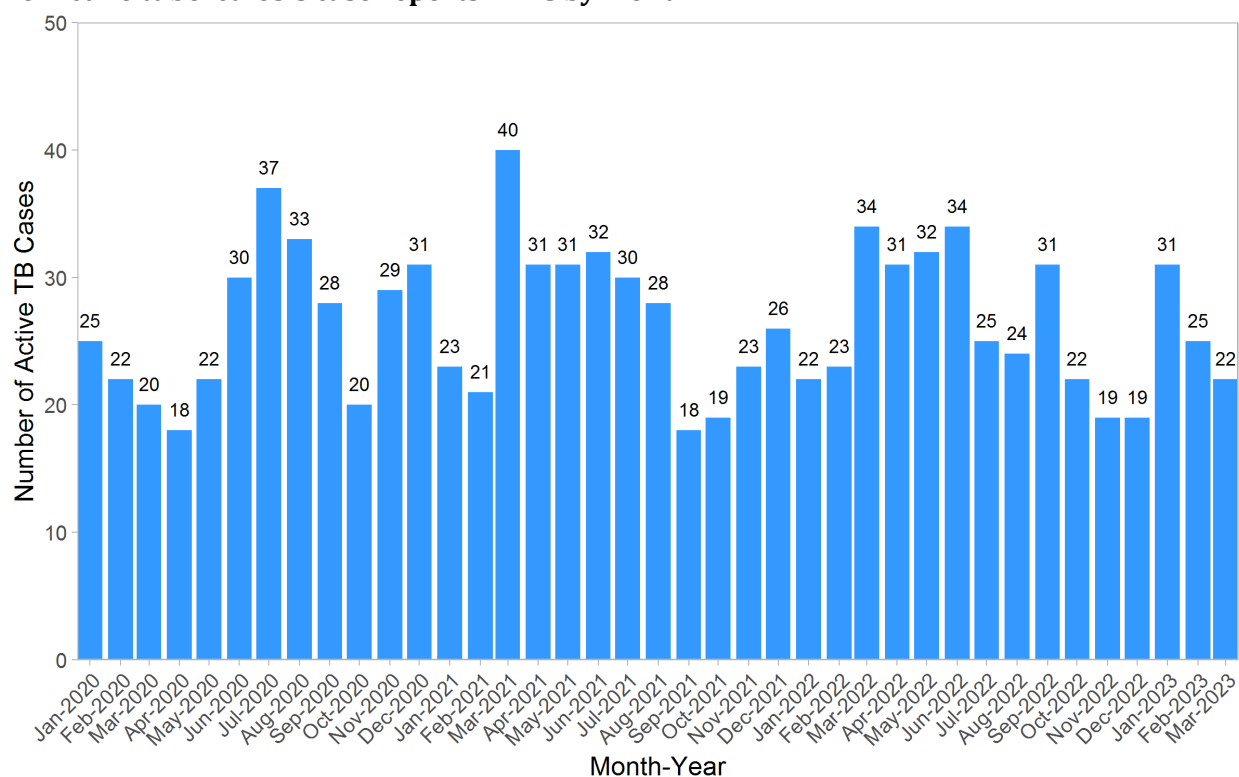
*Antibody testing episode = 1-day window (see technical appendix for further details).

Note: Percent positivity is calculated as the number of HCV cases over antibody testing episodes, where an antibody testing episode is defined as a 1-day window.

-The number of male HCV antibody testing episodes is based on sex reported on the laboratory requisition. The number of male HCV cases is based on the sex variable values collected in the laboratory information system.

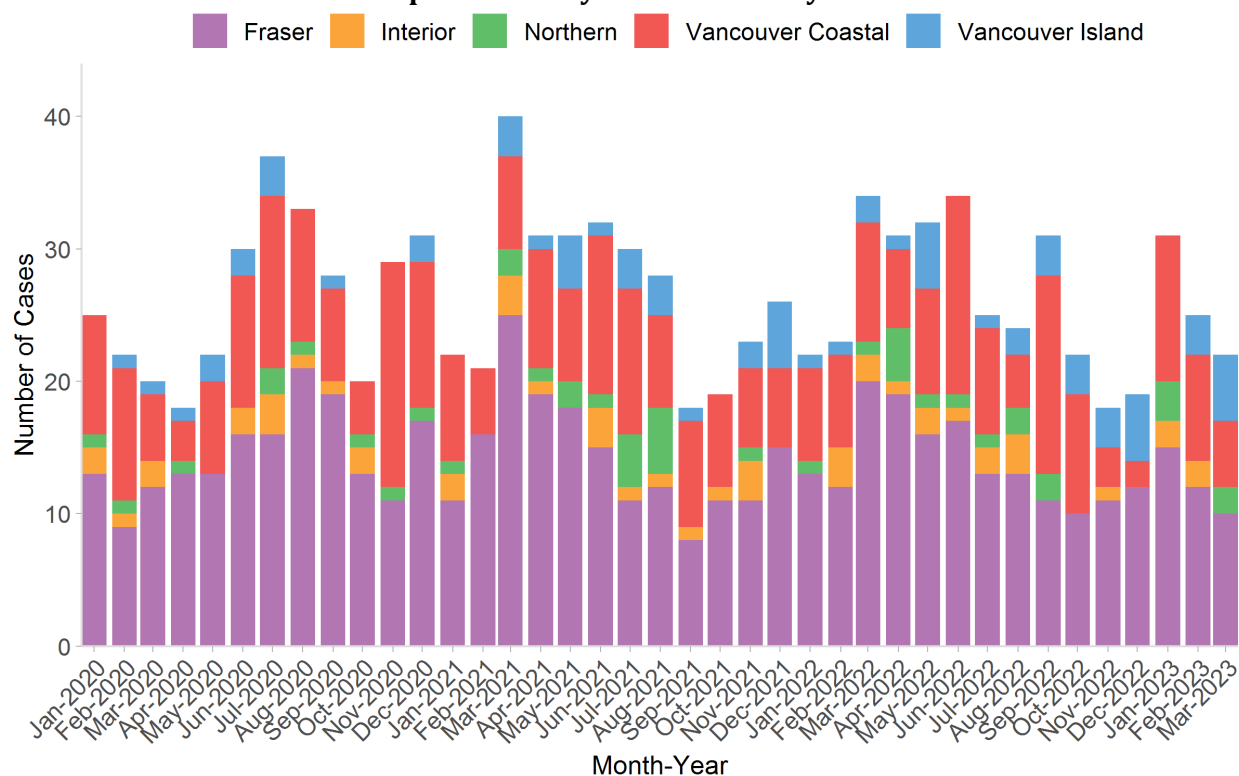
Active Tuberculosis

26. Active tuberculosis case reports in BC by month



Preliminary data and subject to change

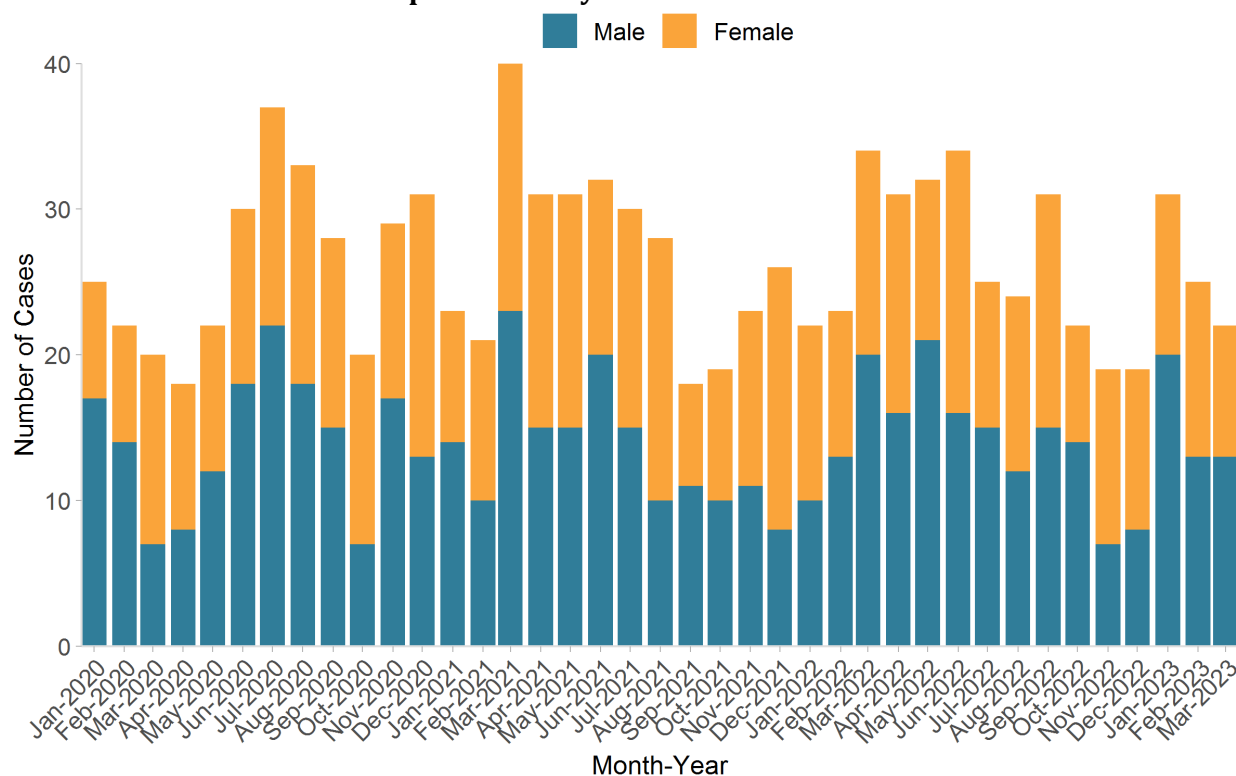
27. Active tuberculosis case reports in BC by health authority



Preliminary data and subject to change

Note: Excludes missing and unknown geography.

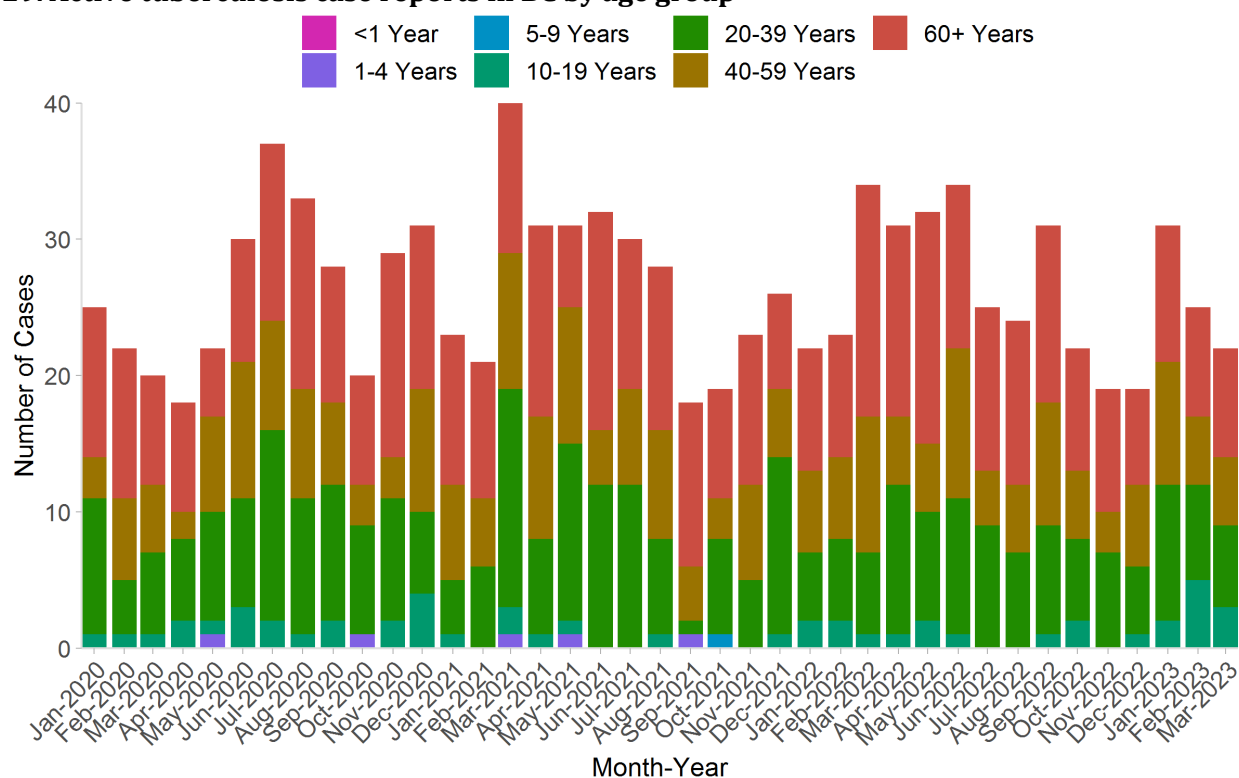
28. Active tuberculosis case reports in BC by sex



Preliminary data and subject to change

Note: Sex is based on the gender variable values collected in Panorama. Data shown reflects male and female responses only.

29. Active tuberculosis case reports in BC by age group

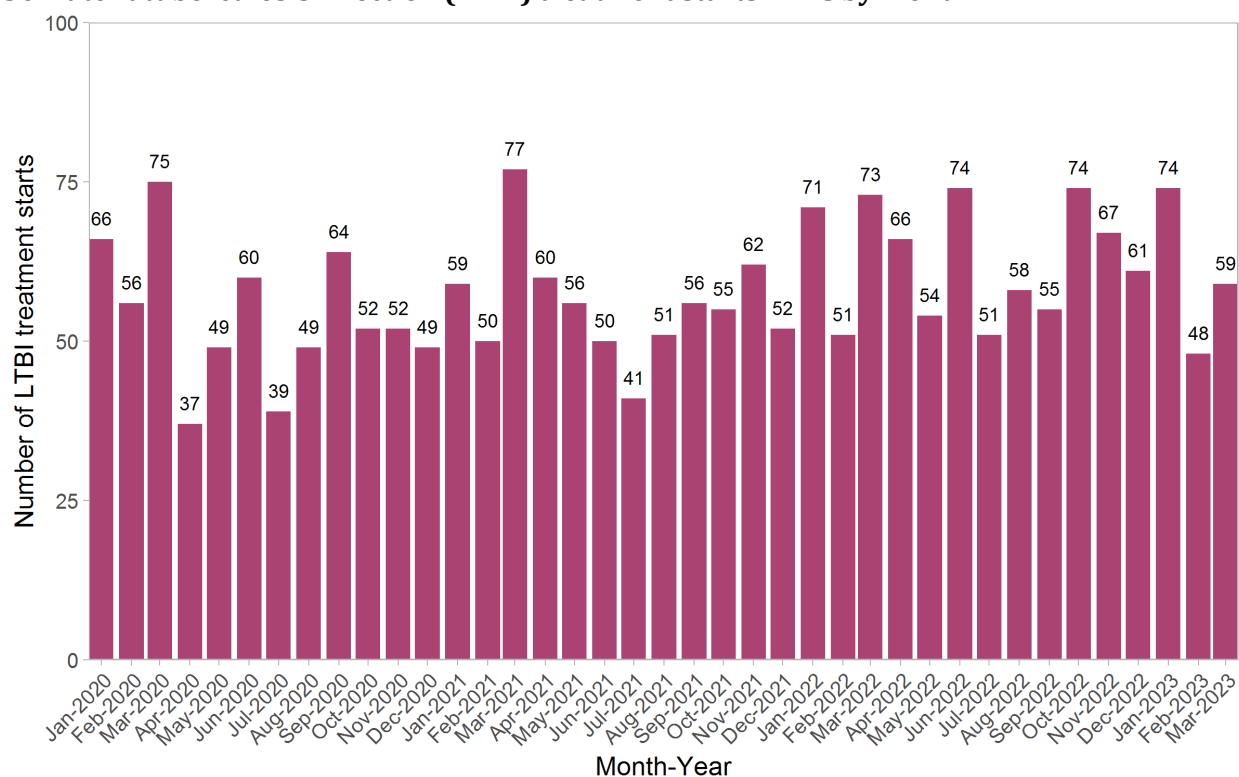


Preliminary data and subject to change

Note: Excludes cases where age could not be calculated due to missing date of birth.

Latent Tuberculosis Infection

30. Latent tuberculosis infection (LTBI) treatment starts in BC by month



Preliminary data and subject to change

Technical Appendix

Case data: This report contains preliminary data on infectious syphilis, chlamydia, gonorrhea, HIV, HCV, active tuberculosis, and latent tuberculosis infection. Provincial counts and geographic distribution of cases are expected to change with improvement in data quality and algorithms.

Testing data: This report contains **non-prenatal** HIV and syphilis testing (that is, tests not flagged as a prenatal test) conducted by the BCCDC Public Health Laboratory (PHL). The BCCDC PHL performs >95% of all screening tests for HIV and HCV, and >99% of all tests for syphilis. A test episode for syphilis and HIV consists of all tests for that infection conducted for an individual in a 30-day period (as follow-up or simultaneous test may be required to clarify test results within this period, for example). A test episode for HCV consists of all HCV antibody tests conducted for an individual in a 1-day period.

Data Sources

Infectious syphilis case data: Data extracted from STIBBI Data Mart (source system = STIIS) and Intrahealth Profile EMR

Syphilis testing episodes: Data extracted from STIBBI Data Mart

Chlamydia: Data extracted from STIBBI Data Mart (source system = STIIS and Panorama) and Intrahealth Profile EMR

Gonorrhea: Data extracted from STIBBI Data Mart (source system = STIIS and Panorama) and Intrahealth Profile EMR

HIV case data: Data extracted from STIBBI Data Mart (source system = HAISYS)

HIV testing episodes: Data extracted from STIBBI Data Mart

HCV case data: Data extracted from STIBBI Data Mart

HCV testing episodes: Data extracted from STIBBI Data Mart

Active tuberculosis case data: Data extracted from CD Data Mart (source system = Panorama)

Latent tuberculosis infection data: Data extracted from CD Data Mart (source system = Panorama)

British Columbia Case Definitions

<http://www.bccdc.ca/health-professionals/clinical-resources/case-definitions>

Gender Identity

We acknowledge that both the gender and sex values do not reflect the full spectrum of gender identity and we continue to work towards improving the data collection and reporting of sex and gender.