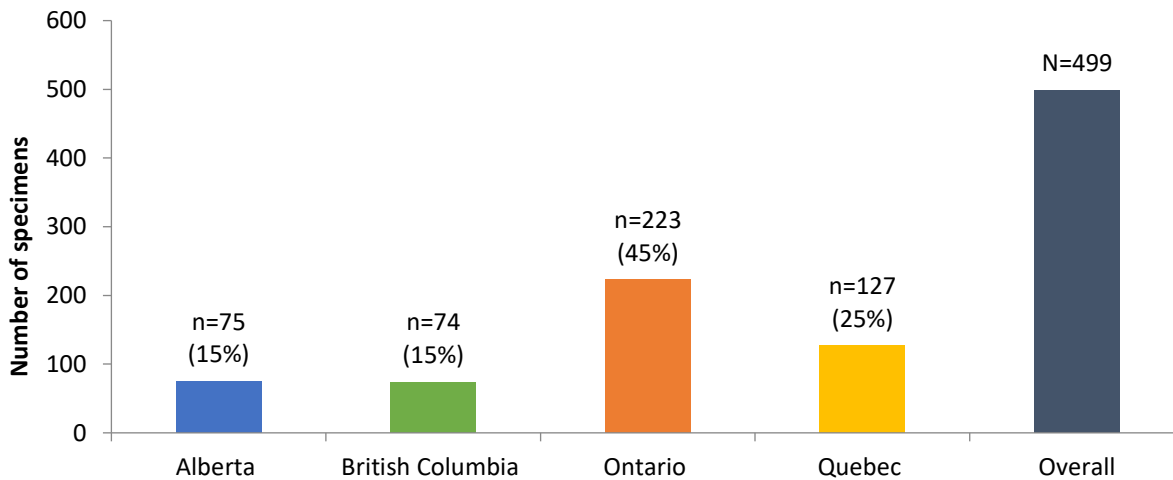


## SPSN Report #2, 2023-24 season Epi Weeks 35 to 43: August 27 to October 28, 2023

The seasonal vaccine effectiveness (VE) monitoring period has now begun as of epi-week 44. Sentinels are reminded to collect specimens and to fully complete the SPSN questionnaire on the lab requisition for all consenting patients presenting with acute respiratory illness (i.e., new or worsening cough) that you believe could be due to a respiratory virus. Importantly, this includes both vaccinated and unvaccinated patients.

Below is a summary of specimens and respiratory pathogens detected by the Sentinel Practitioner Surveillance Network (SPSN) during the period spanning epi-weeks 35 to 43 (August 27 to October 28) 2023. We anticipate specimen collection to increase now that we have entered the official VE monitoring period.

**Figure 1.** Specimens submitted to the SPSN overall and by province, epi-weeks 35-43, 2023 (N=499)



For the distribution of SPSN specimens by province and age group, see [Table 1](#).

**SPSN specimens with at least one respiratory pathogen detected, epi-weeks 35-43, 2023:** 274/499 (55%)

**SPSN respiratory virus detections, epi-weeks 35-43, 2023 (n, %):**

1. Enterovirus/rhinoviruses (EV/RV): 161 (32%)
2. SARS-CoV-2: 63 (13%)
3. Respiratory syncytial virus (RSV): 21 (4%)
4. Parainfluenza: 18 (4%)
5. Influenza viruses: 13 (3%)
6. Other (seasonal coronaviruses, human metapneumovirus (HMPV), and adenoviruses): 19 (4%)

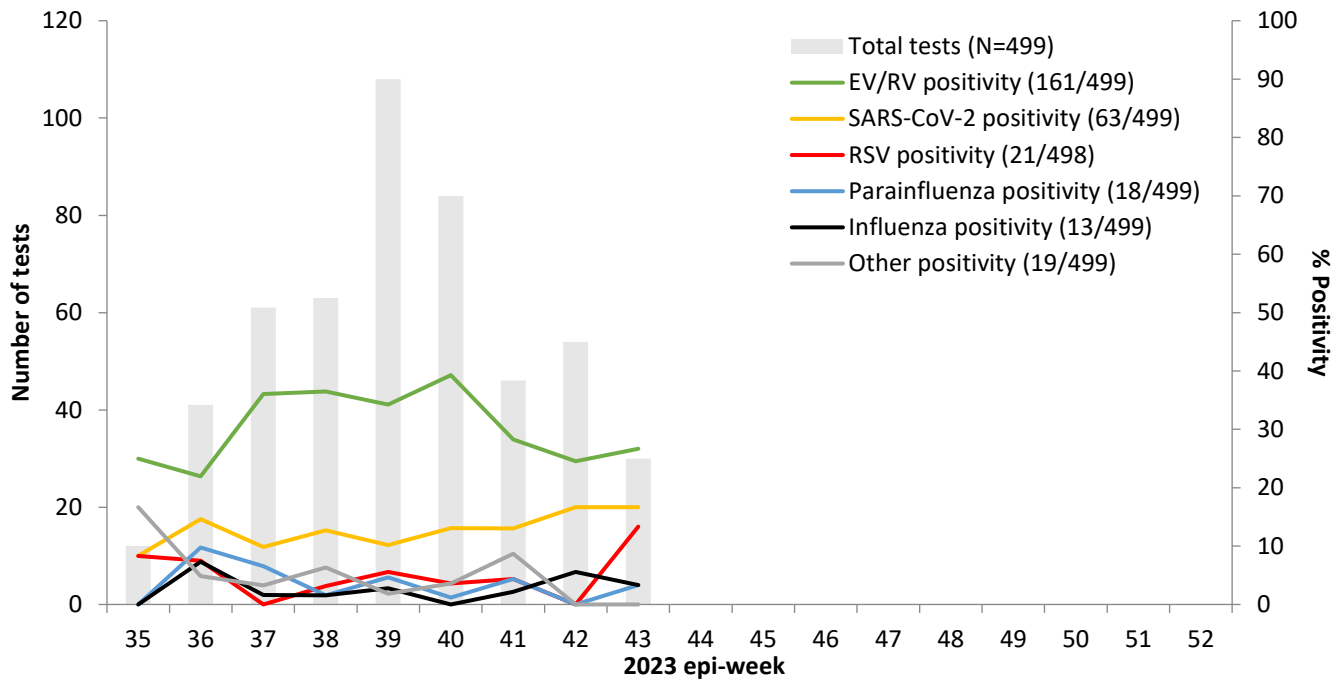
SPSN findings by epi-week are shown in [Figure 2](#), and for each province in [Figure 3](#).

For more respiratory pathogen surveillance globally, including from among [general laboratory specimens](#) in British Columbia, see [Table 2](#).

Below are the vaccine components recommended by the [World Health Organization](#) for the 2023-23 season:

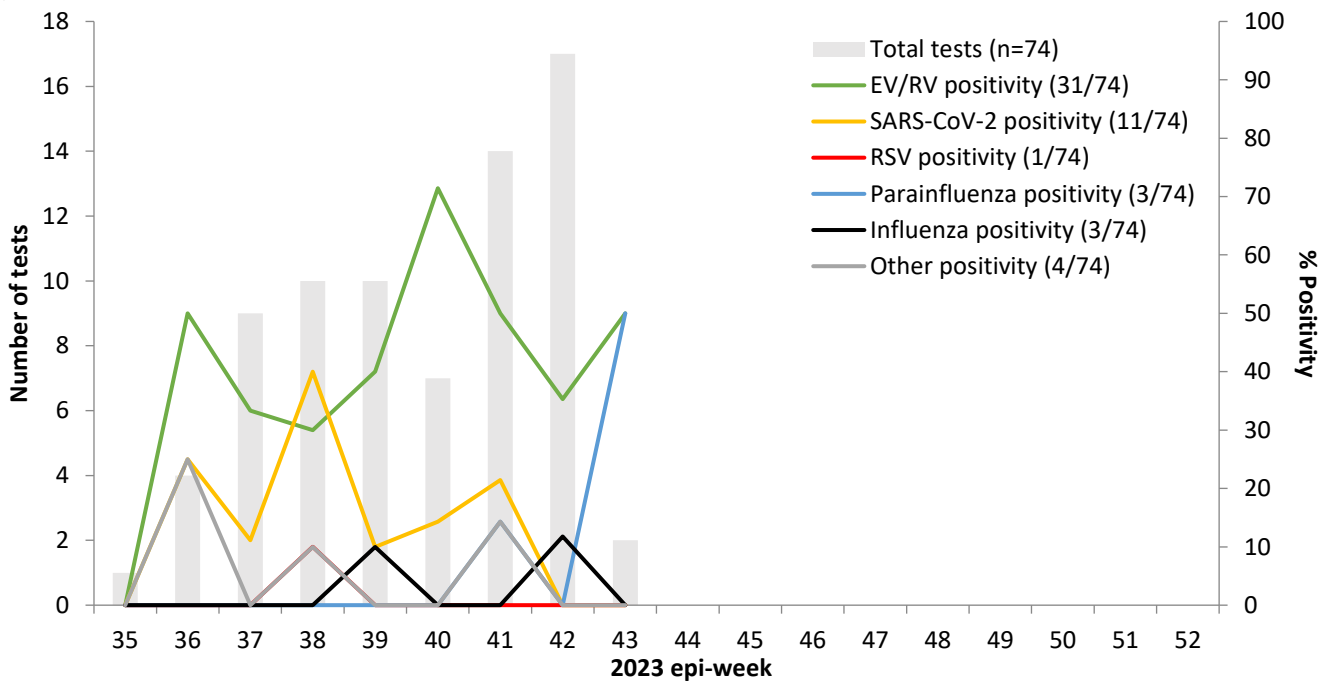
Season	A(H1N1)pdm09	A(H3N2)	B/Victoria*	B/Yamagata
<b>2023-24 (current)</b>	A/Victoria/4897/2022 (clade 6B.1A.5a.2a.1; "5a.2a.1")	A/Darwin/9/2021 (clade 3C.2a1b.2a.2a; "2a")	B/Austria/1359417/2021 (clade V1A.3a.2; "3a.2")	B/Phuket/3073/2013 (clade Y3)

\*recommended component of trivalent vaccine whereas quadrivalent vaccine includes both B/Victoria and B/Yamagata lineages.

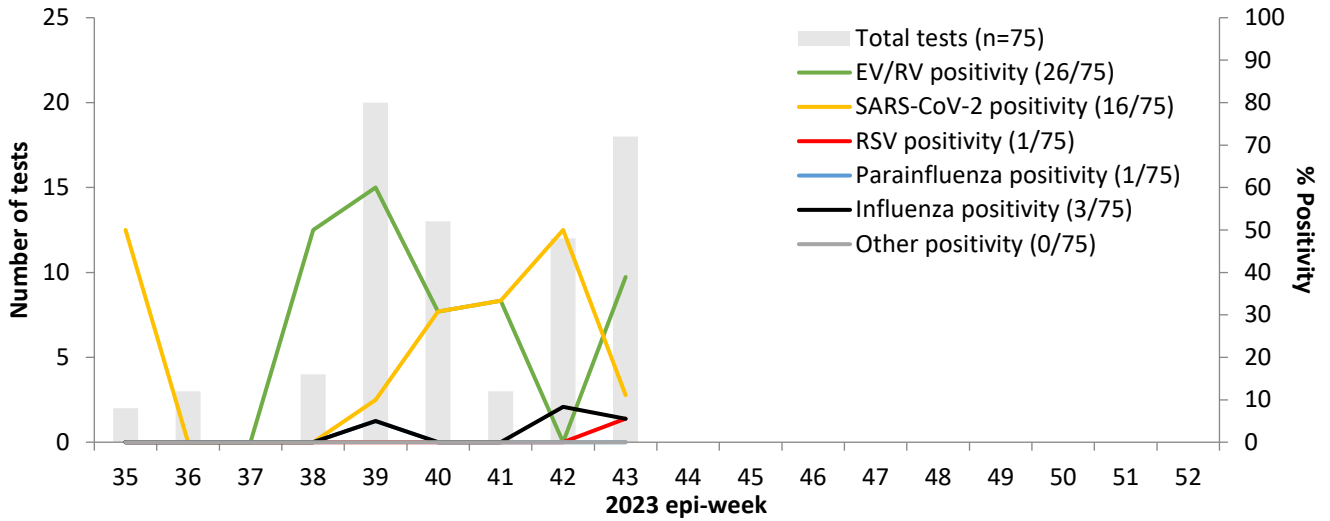
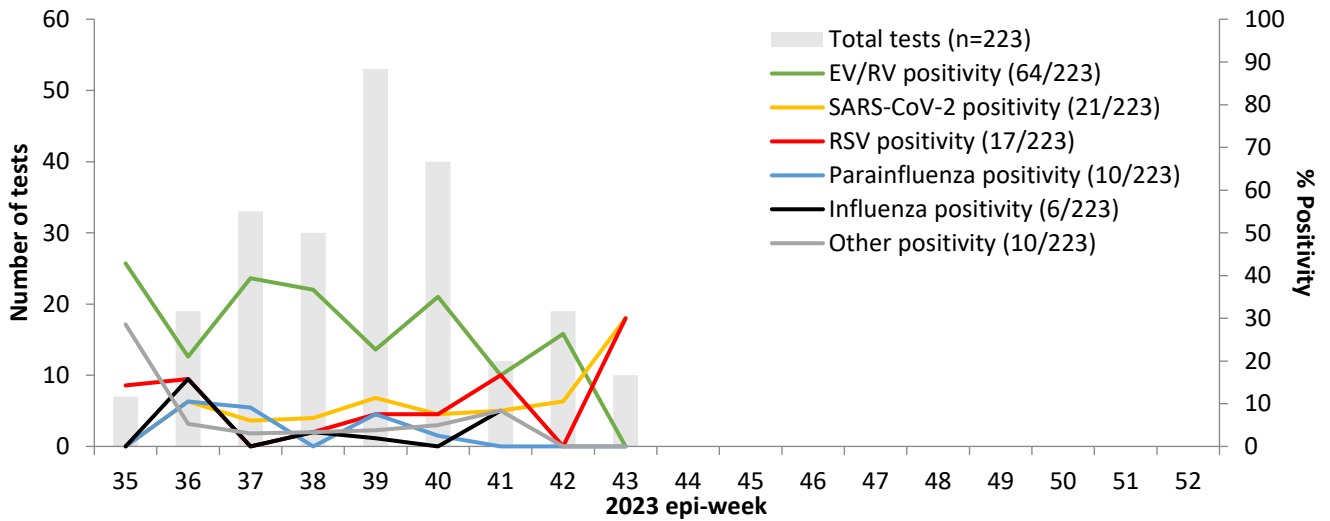
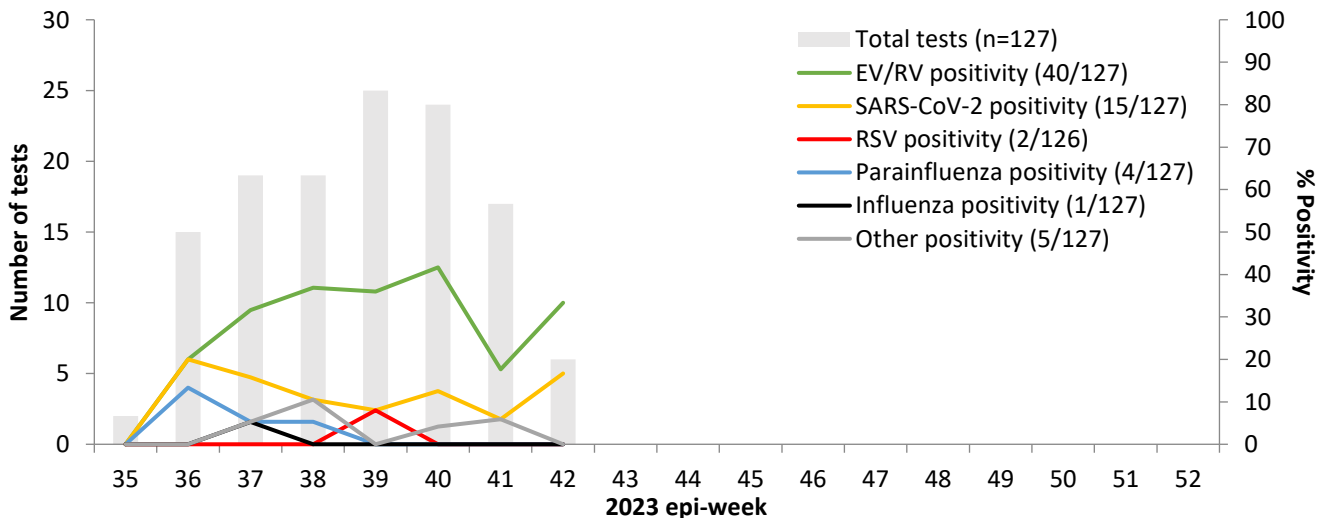
**Figure 2.** Weekly testing and percent positivity among SPSN specimens overall, epi-weeks 35-43, 2023


Among SPSN specimens overall, a total of 14 were diagnosed with co-infections: 3 with influenza A plus EV/RV; 4 with SARS-CoV-2 plus EV/RV; 6 with RSV plus EV/RV; and 1 with RSV plus adenovirus.

**Figure 3.** Weekly testing and percent positivity among SPSN specimens by province, epi-weeks 35-43, 2023

**a) British Columbia**


Note: All values for the most recent epi-week are subject to change.

**b) Alberta**

**c) Ontario**

**d) Quebec**


Note: All values for the most recent epi-week are subject to change.

**Table 1.** Specimens submitted to the SPSN by province and age group, epi-weeks 35-43, 2023 (N=499)

Province	<1 year	1-4 years	5-8 years	9-11 years	12-19 years	20-49 years	50-64 years	65+ years	Total
AB	1	3	5	3	4	28	16	15	75
BC	0	7	4	1	11	24	15	12	74
ON	17	36	20	6	14	74	23	33	223
QC	1	8	2	2	10	46	28	30	127
<b>Total</b>	19	54	31	12	39	172	82	90	499

**Table 2.** Additional resources for respiratory pathogen surveillance

<p><b>Canada</b>  <a href="#">BCCDC - Respiratory Disease Dashboard</a>  <a href="#">PHAC - FluWatch Surveillance</a>  <a href="#">PHAC - Human Emerging Respiratory Pathogens Bulletins</a></p> <p><b>United States</b>  <a href="#">Washington State - Influenza Updates</a>  <a href="#">California State - Influenza and Respiratory Disease Surveillance Report</a>  <a href="#">CDC - Weekly Influenza Surveillance Report</a></p> <p><b>Europe</b>  <a href="#">Joint ECDC—WHO/Europe - Flu News</a></p> <p><b>Oceania</b>  <a href="#">Australian Influenza Surveillance Reports</a>  <a href="#">New Zealand Institute of Environmental Science and Research (ESR) - Acute Respiratory Illness Infections Dashboard</a></p>	<p><b>South Africa</b>  <a href="#">National Institute for Communicable Diseases - Weekly Respiratory Pathogens Surveillance Report</a></p> <p><b>World Health Organization</b>  <a href="#">Global Influenza Updates</a>  <a href="#">Weekly Epidemiological Record</a>  <a href="#">Collaborating Centre for Reference and Research on Influenza</a>  <a href="#">Recommendations for Influenza Vaccine Composition</a>  <a href="#">Influenza at the Human-Animal Interface Summary and Assessment Updates</a></p> <p><b>World Organization for Animal Health</b>  <a href="#">OFFLU - Animal influenza</a></p>
--	--