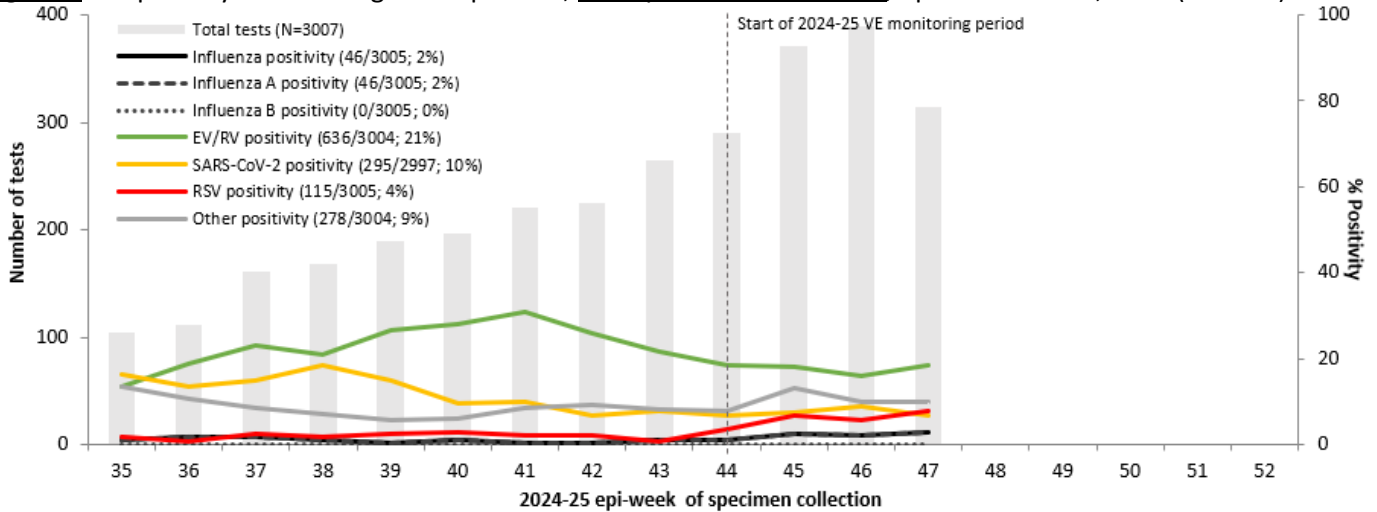


SPSN Report #2, 2024-25 Season

Epi Weeks 35 to 47: August 25 to November 23, 2024

The 2024/25 SPSN vaccine effectiveness (VE) monitoring period has begun. Across participating provinces, influenza activity remains low, with highest positivity for entero/rhinoviruses, and recent RSV increase. Heightened *M pneumoniae* continues in both BC and Quebec, compared to prior seasons.

Figure 1. Respiratory virus testing and % positive, SPSN provinces combined, epi-weeks 35-47, 2024 (N=3007)

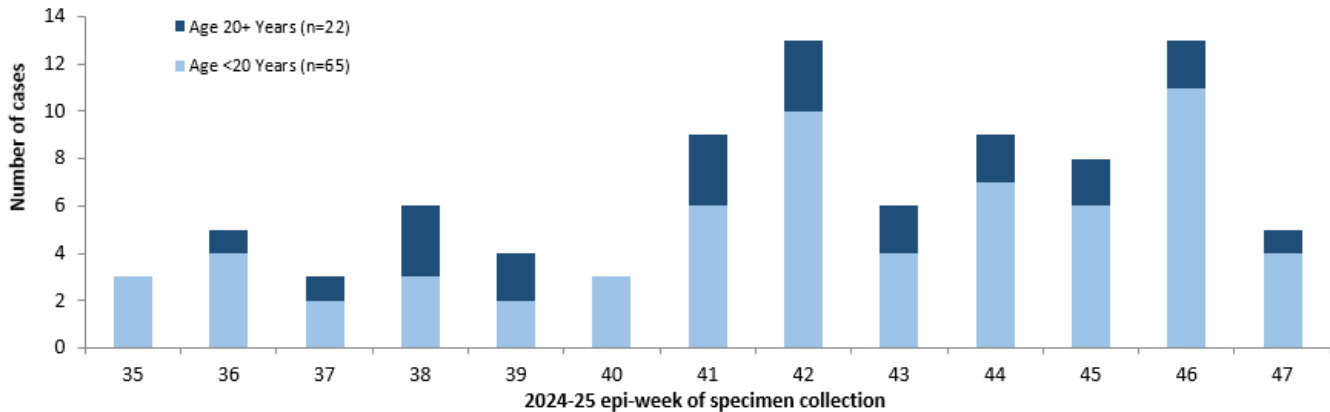


* Tallies subject to change as data become more complete, notably for the most recent weeks. Viruses included in “other” category: parainfluenza, seasonal coronaviruses, human metapneumovirus, adenovirus. Of influenza A viruses subtyped, 31/42 (74%) A(H1) and 11/42 (26%) A(H3). Overall, 52 participants diagnosed with co-infections, mostly involving RSV. See **Figure 3** for findings by province. See **Table 1** for tallies by age group and province.

M pneumoniae

In BC and Quebec, SPSN testing includes *M pneumoniae*. For weeks 35 to 47, *M pneumoniae* positivity in 2024 in BC is 7% (28/375) and in Quebec is 4% (59/1469), higher than prior seasons. As shown below, *M pneumoniae* detections are ongoing. Most recent week 46-47 positivity in BC is 9% and in Quebec is 4% (not shown).

Figure 2. SPSN *M pneumoniae* detections in BC and Quebec, by age category, epi-weeks 35-47, 2024 (N=87)*



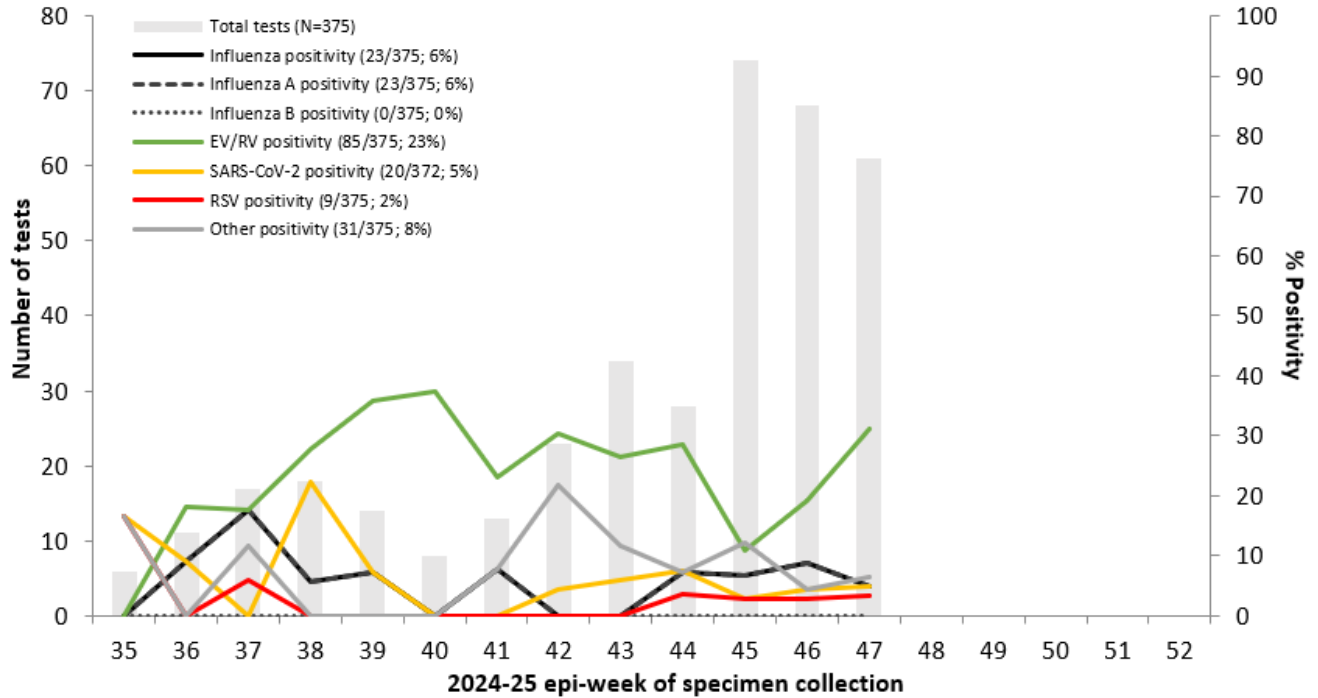
* *M pneumoniae* reporting in BC and Quebec only. Tallies subject to change as data become more complete, notably for the most recent weeks.

2024-25 influenza vaccination, SPSN influenza-negative controls: 16% (201/1228*)

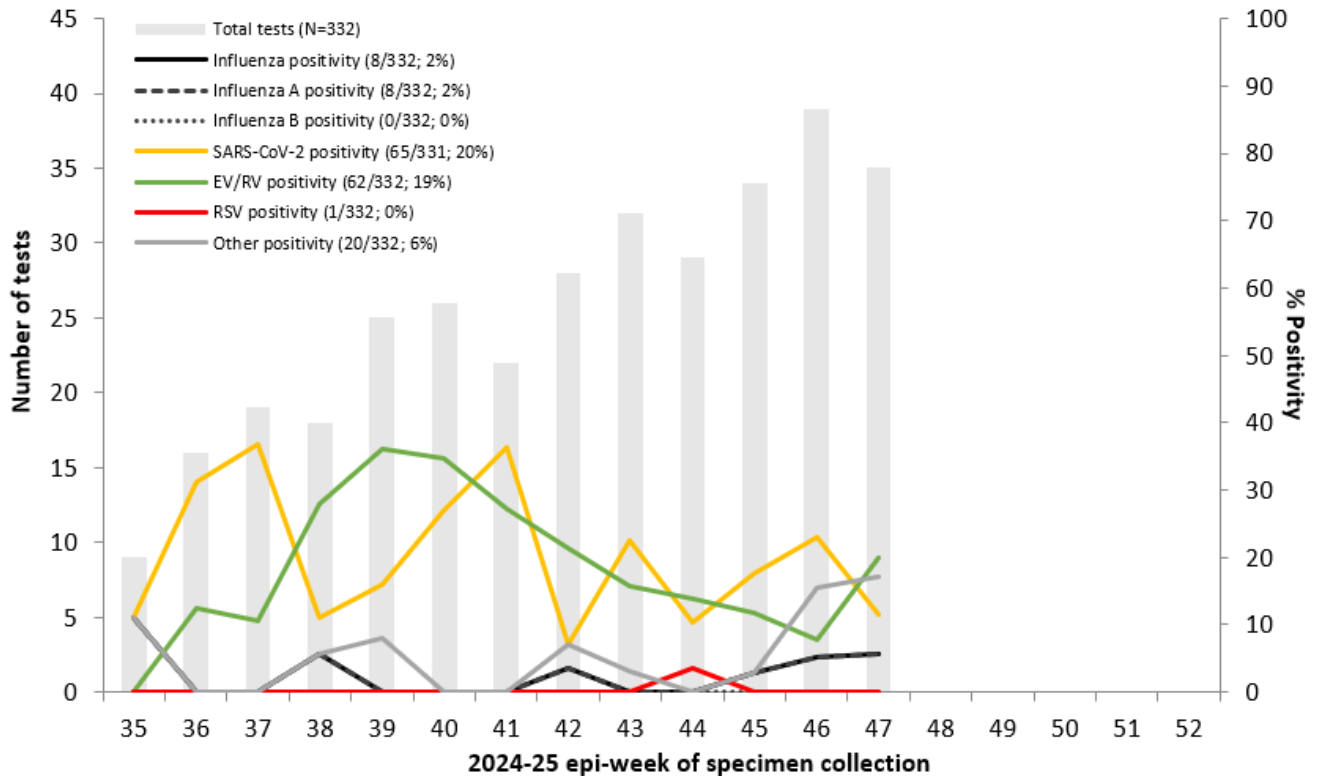
* Since epi-week 44: denominator includes specimens collected from SPSN patients with acute respiratory illness who tested negative for influenza virus and for whom 2024-25 influenza vaccine status (yes/no) was reported; numerator represents those reporting influenza vaccine receipt.

2024-25 COVID-19 vaccination, SPSN SARS-CoV-2-negative controls: 12% (134/1131*)

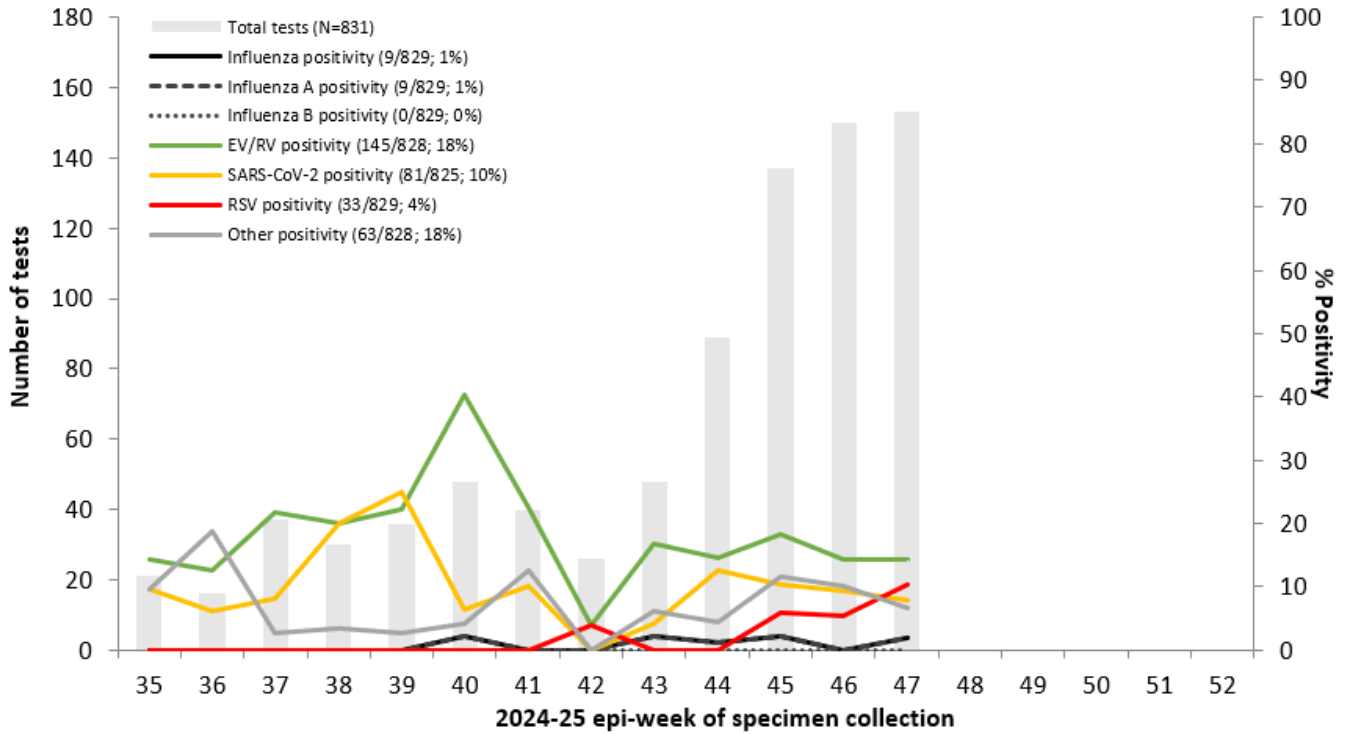
* Since epi-week 44: denominator includes specimens collected from SPSN patients with acute respiratory illness who tested negative for SARS-CoV-2 virus and for whom 2024-25 COVID-19 vaccine status (yes/no) was reported; numerator represents those reporting vaccine receipt.

Figure 3. Weekly testing and percent positivity among SPSN specimens by province, epi-weeks 35-47, 2024
a) British Columbia


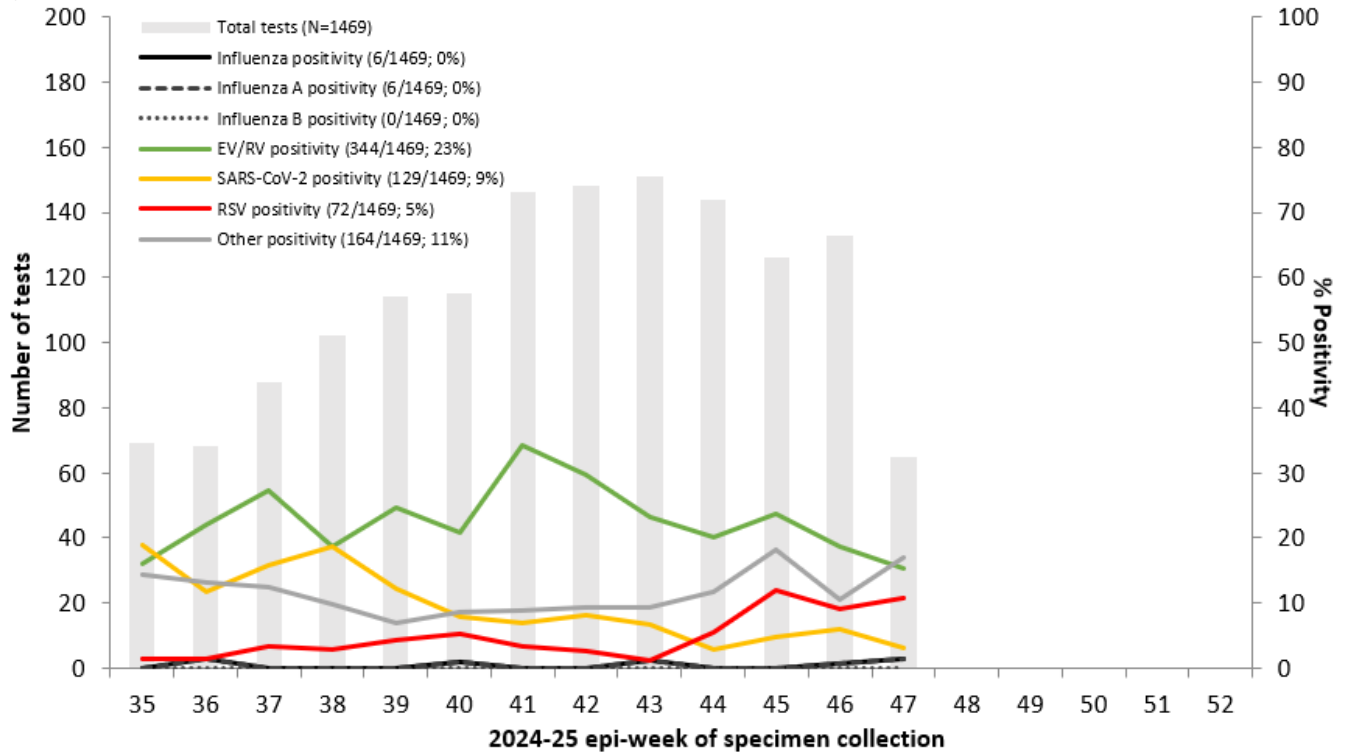
Specimens from both 2023-24 and 2024-25 requisitions are displayed. All tallies are subject to change as the season progresses and data become more complete, notably for the most recent weeks.

b) Alberta


Specimens from both 2023-24 and 2024-25 requisitions are displayed. All tallies are subject to change as the season progresses and data become more complete, notably for the most recent weeks.

c) Ontario


Specimens from both 2023-24 and 2024-25 requisitions are displayed. All tallies are subject to change as the season progresses and data become more complete, notably for the most recent weeks.

d) Quebec


Specimens from both 2023-24 and 2024-25 requisitions are displayed. All tallies are subject to change as the season progresses and data become more complete, notably for the most recent weeks.

Table 1. Specimens submitted to the SPSN by province and age group, epi-weeks 35-47, 2024 (N=3007)

Province	<5 years	5-8 years	9-19 years	20-49 years	50-64 years	65+ years	Total
AB	11	13	39	116	64	89	332
BC	23	36	87	112	68	49	375
ON	109	70	119	283	107	143	831
QC	215	115	198	495	221	225	1469
Total	358	234	443	1006	460	506	3007

Table 2. Additional resources for respiratory pathogen surveillance

<p>Canada BCCDC - Respiratory Disease Dashboard PHAC - FluWatch Surveillance PHAC - Human Emerging Respiratory Pathogens Bulletins</p> <p>United States Washington State - Influenza Updates California State - Influenza and Respiratory Disease Surveillance Report CDC - Weekly Influenza Surveillance Report</p> <p>Europe Joint ECDC—WHO/Europe - Flu News</p> <p>Oceania Australian Influenza Surveillance Reports New Zealand Institute of Environmental Science and Research (ESR) - Acute Respiratory Illness Infections Dashboard</p>	<p>South Africa National Institute for Communicable Diseases - Weekly Respiratory Pathogens Surveillance Report</p> <p>World Health Organization Global Influenza Updates Weekly Epidemiological Record Recommendations for Influenza Vaccine Composition Influenza at the Human-Animal Interface Summary and Assessment Updates</p> <p>World Organization for Animal Health OFFLU - Animal influenza</p>
--	--