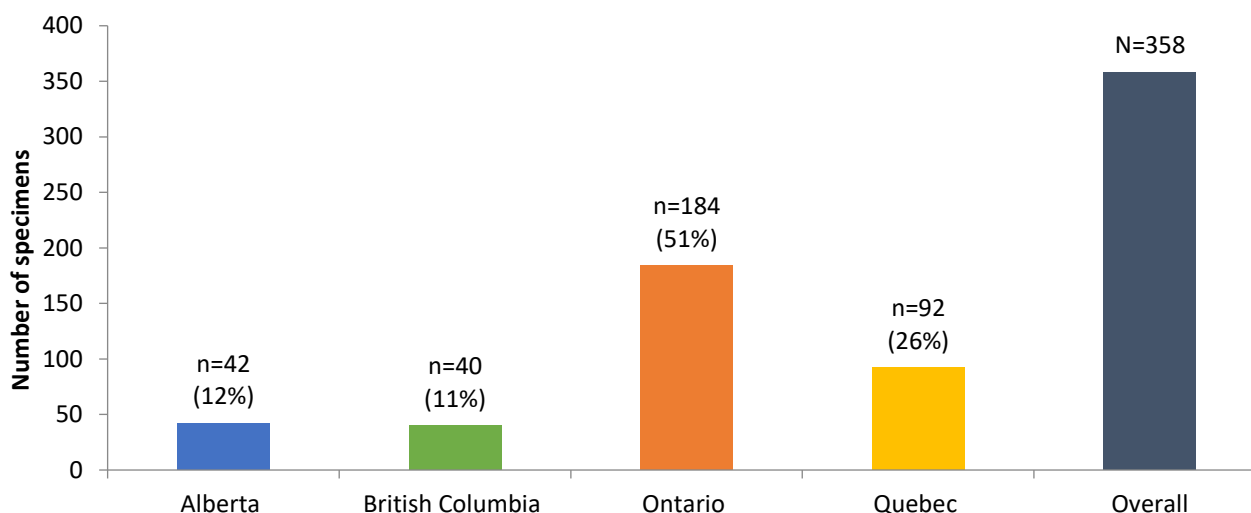


SPSN Report #1, 2023-24 season Epi Weeks 35 to 41: August 27 to October 14, 2023

Below is a summary of valid specimens and respiratory pathogens detected by the Sentinel Practitioner Surveillance Network (SPSN) during the period spanning epi-weeks 35 to 41 (August 27 to October 14) 2023.

Figure 1. Specimens submitted to the SPSN overall and by province, epi-weeks 35-41, 2023 (N=358)



For the distribution of SPSN specimens by province and age group, see [Table 1](#).

SPSN specimens with at least one respiratory pathogen detected (n, %): 218/358 (61%)

Respiratory virus detections among SPSN specimens, epi-weeks 35-41, 2023 (n, %):

1. Enterovirus/rhinoviruses (EV/RV): 121 (34%)
2. SARS-CoV-2: 42 (12%)
3. Respiratory syncytial virus (RSV): 15 (4%)
4. Parainfluenza: 15 (4%)
5. Influenza viruses: 8 (2%)
6. Other (seasonal coronaviruses, human metapneumovirus (HMPV), and adenoviruses): 16 (5%)

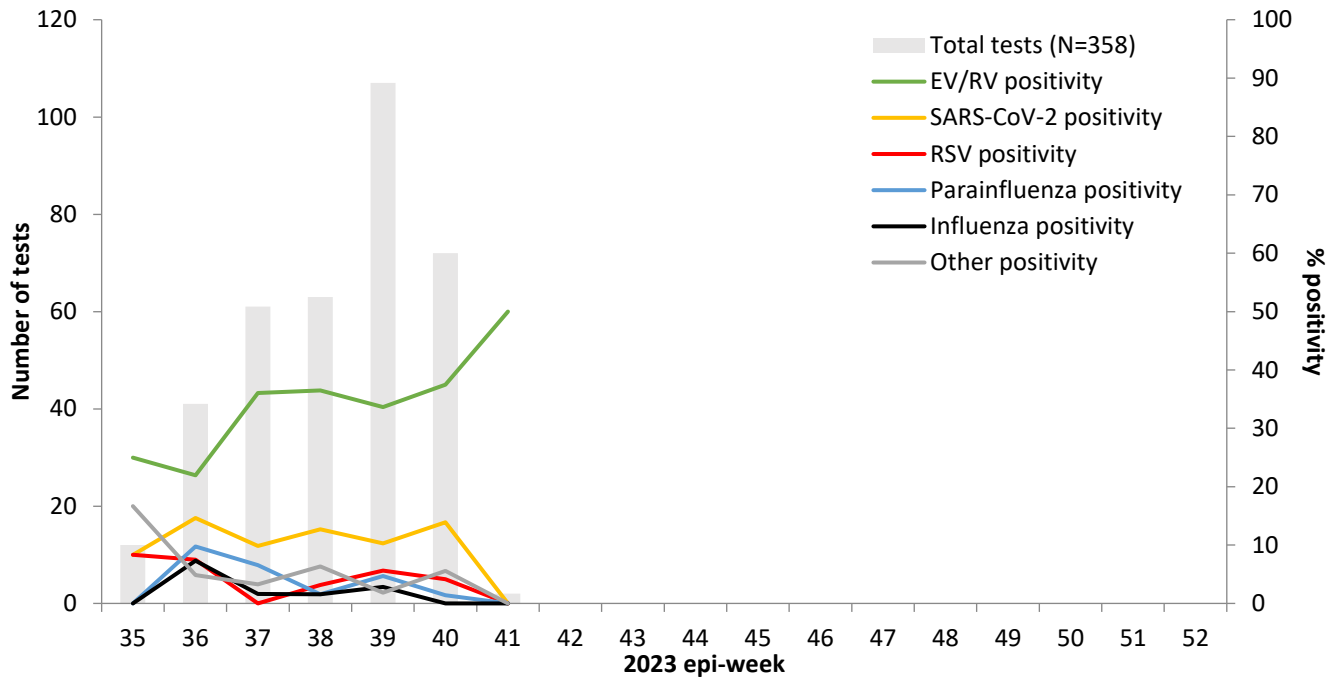
SPSN findings by epi-week are shown in [Figure 2](#), and for each province in [Figure 3](#).

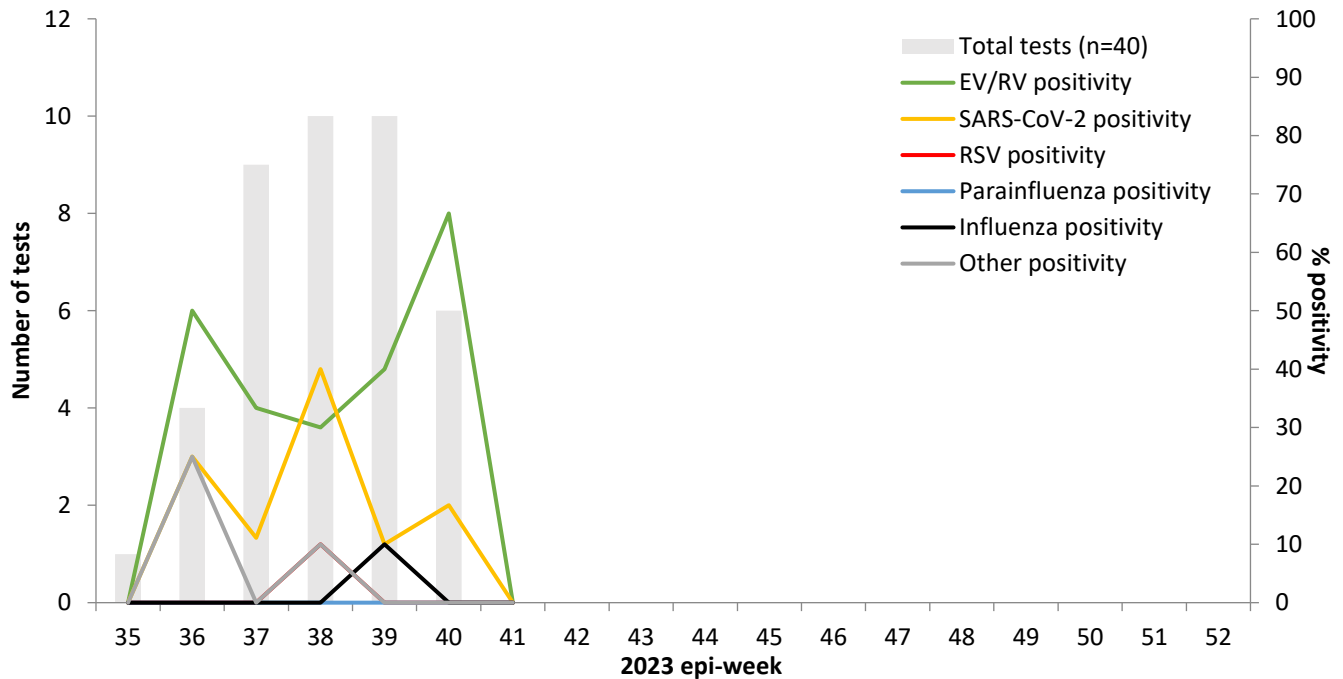
EV/RV and SARS-CoV-2 are also predominating among [general laboratory specimens](#) in British Columbia, but with slightly more influenza than RSV detected. These detections are mostly driven by hospital specimens whereas the SPSN reflects outpatient testing. For more respiratory pathogen surveillance globally, see [Table 2](#).

The 2023-24 vaccine effectiveness (VE) analysis period begins from epi-week 44. The [World Health Organization](#) recommended that only the A(H1N1) component of the northern hemisphere's 2023-24 influenza vaccine be updated from the prior season. See 2022-23 vaccine strains and updates for 2023-24 below.

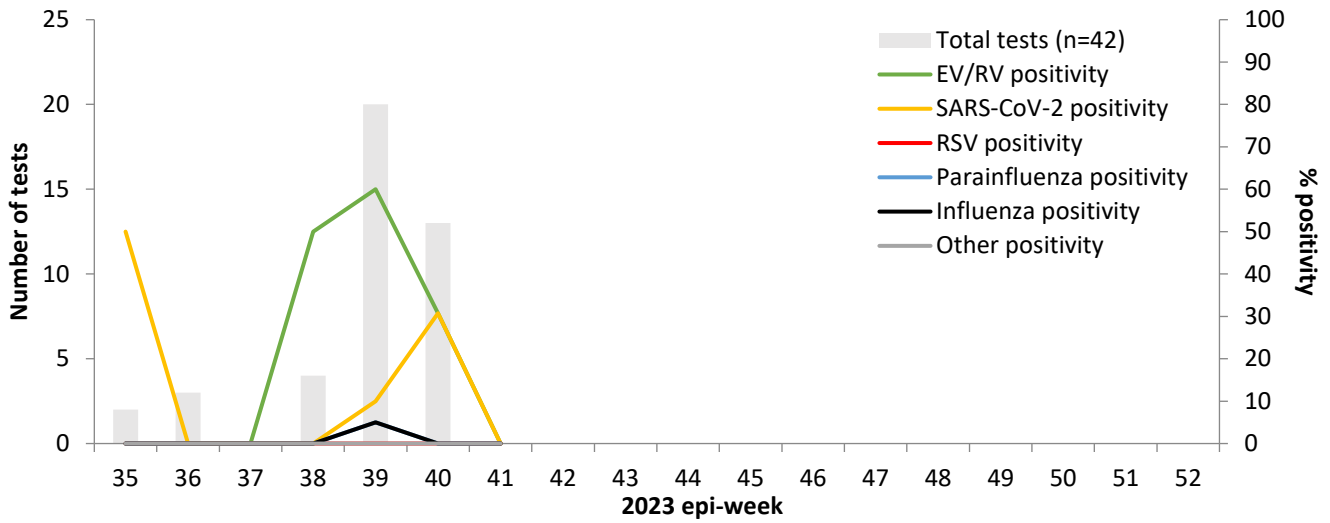
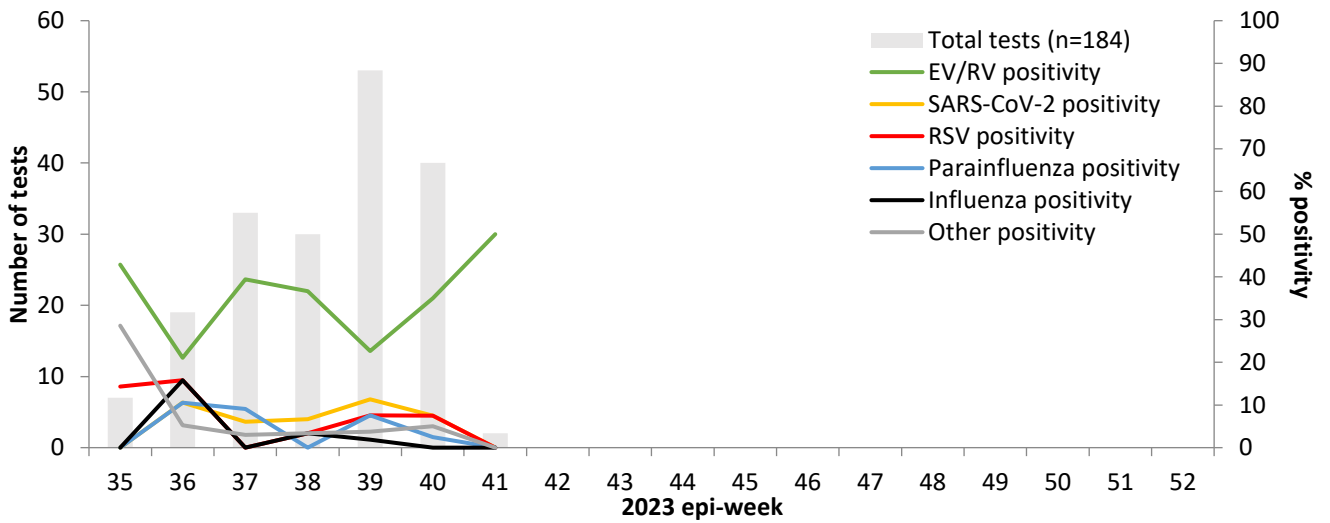
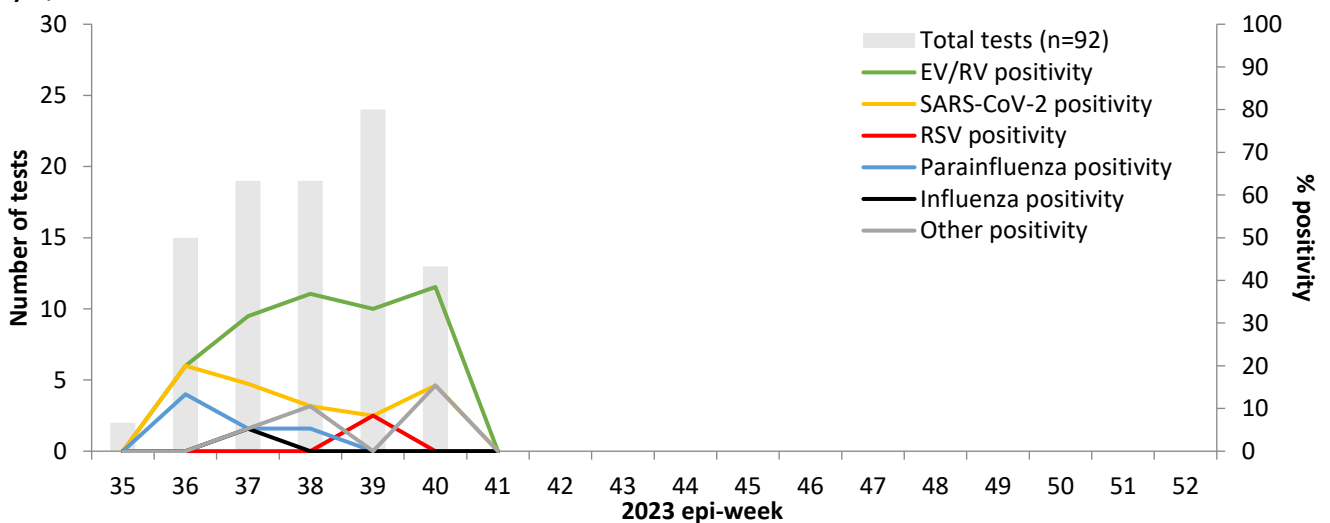
Season	A(H1N1)pdm09	A(H3N2)	B/Victoria*	B/Yamagata
2022-23 (prior)	A/Victoria/2570/2019 (clade 6B.1A.5a.2; "5a.2")	A/Darwin/9/2021 (clade 3C.2a1b.2a.2a; "2a")	B/Austria/1359417/2021 (clade V1A.3a.2; "3a.2")	B/Phuket/3073/2013 (clade Y3)
2023-24 (current)	A/Victoria/4897/2022 (clade 6B.1A.5a.2a.1; "5a.2a.1")	-	-	-

*recommended component of trivalent vaccine whereas quadrivalent vaccine includes both B/Victoria and B/Yamagata lineages.

Figure 2. Weekly testing and percent positivity among SPSN specimens overall, epi-weeks 35-41, 2023

Figure 3. Weekly testing and percent positivity among SPSN specimens by province, epi-weeks 35-41, 2023

a) British Columbia


Note: All values for the most recent epi-week are subject to change.

b) Alberta

c) Ontario

d) Quebec


Note: All values for the most recent epi-week are subject to change.

Table 1. Specimens submitted to the SPSN by province and age group, epi-weeks 35-41, 2023 (N=358)

Province	<1 year	1-4 years	5-8 years	9-11 years	12-19 years	20-49 years	50-64 years	65+ years	Total
AB	0	2	3	1	3	17	7	9	42
BC	0	4	1	1	6	16	5	7	40
ON	14	30	15	5	11	65	18	26	184
QC	1	7	1	2	6	30	21	24	92
Total	15	43	20	9	26	128	51	66	358

Table 2. Additional resources for respiratory pathogen surveillance

<p>Canada BCCDC - Respiratory Disease Dashboard PHAC - FluWatch Surveillance PHAC - Human Emerging Respiratory Pathogens Bulletins</p> <p>United States Washington State - Influenza Updates California State - Influenza and Respiratory Disease Surveillance Report CDC - Weekly Influenza Surveillance Report</p> <p>Europe Joint ECDC—WHO/Europe - Flu News</p> <p>Oceania Australian Influenza Surveillance Reports New Zealand Institute of Environmental Science and Research (ESR) - Acute Respiratory Illness Infections Dashboard</p>	<p>South Africa National Institute for Communicable Diseases - Weekly Respiratory Pathogens Surveillance Report</p> <p>World Health Organization Global Influenza Updates Weekly Epidemiological Record Collaborating Centre for Reference and Research on Influenza Recommendations for Influenza Vaccine Composition Influenza at the Human-Animal Interface Summary and Assessment Updates</p> <p>World Organization for Animal Health OFFLU - Animal influenza</p>
--	--