

ASSESSING FOR NEUROSYPHILIS



BC Centre for Disease Control
Provincial Health Services Authority

Neurosyphilis occurs when the syphilis-causing bacterium *Treponema pallidum* invades the brain and/or spinal cord.

This can happen **at any stage** of syphilis and can result in devastating and irreversible outcomes. If you have a patient with known or suspected syphilis, please assess for these symptoms:

Personality changes

Confusion or mood swings

Seizures

Unsteady gait

Headache

Tinnitus/hearing loss

Dizziness

Nausea/vomiting

Neck stiffness

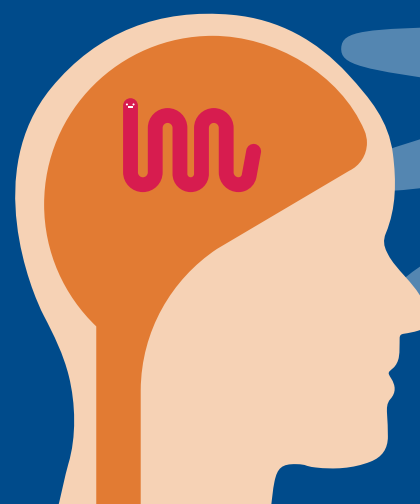
Cranial nerve deficits

***Refer for lumbar puncture for above symptoms**

Decreased vision, or
visual disturbances

Photophobia

***Refer to ophthalmology**



Symptoms of neurosyphilis can often be broad and may overlap with other conditions. Verify the onset, severity and duration of symptoms, and contact the BCCDC STI physicians for assistance with diagnosing and plan for care.

If someone presents to your care with these symptoms please ensure that syphilis has been ruled out.

Testing for one STI? Test for all!
Test for syphilis.



**BCCDC STI
Physician Consult Line
604-707-5610**