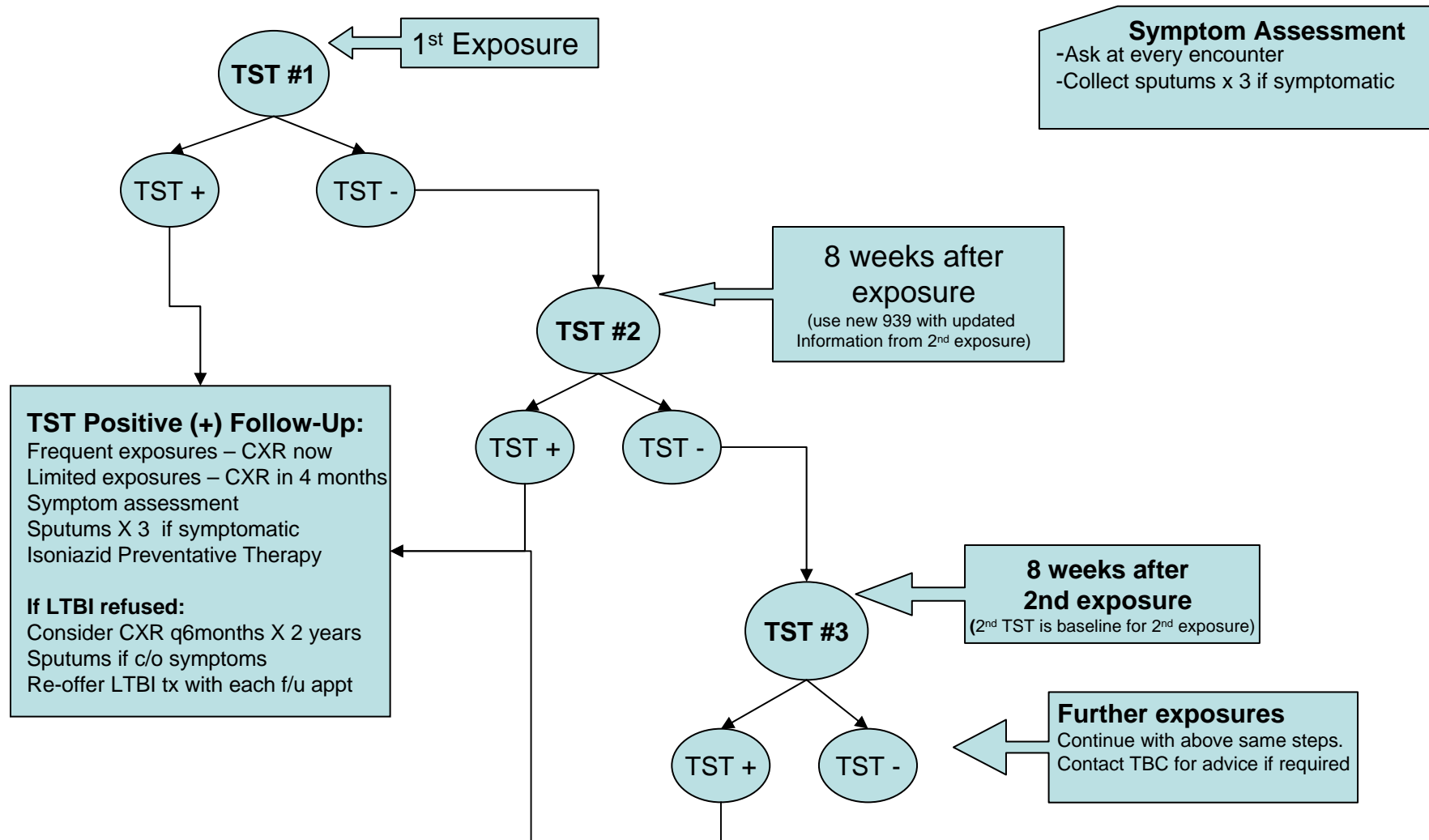


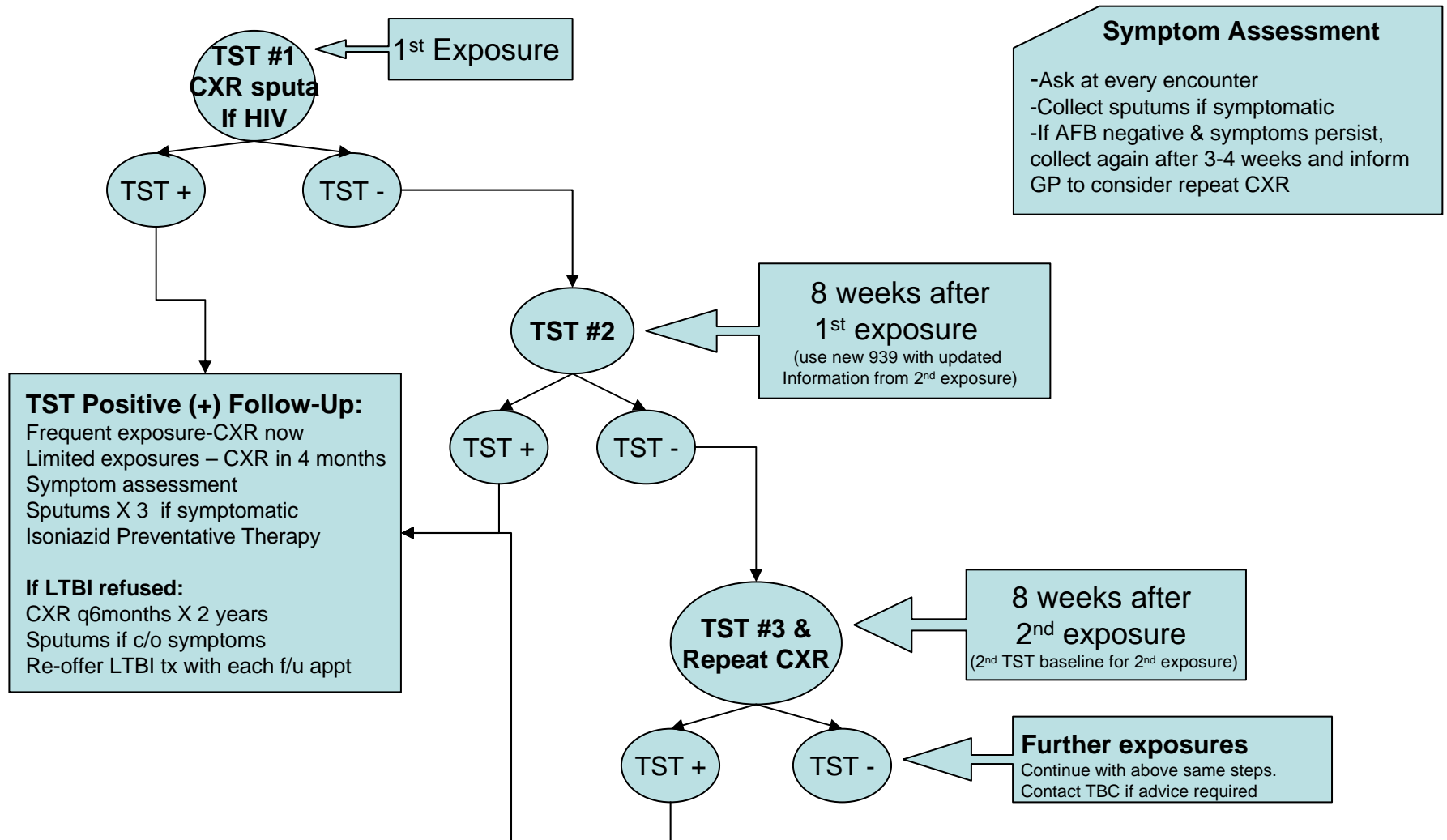
Contact Tracing (CT) Guidelines: Repeated Exposure Immuno-competent Contact



NOTE:

For those who are re-exposed and have a previous positive TST and/or previous LTBI treatment (remote or recent) see:
Contact Tracing Guidelines: Previous Positive Contacts

Contact Tracing (CT) Guidelines: Repeated Exposure Immuno-compromised Contact



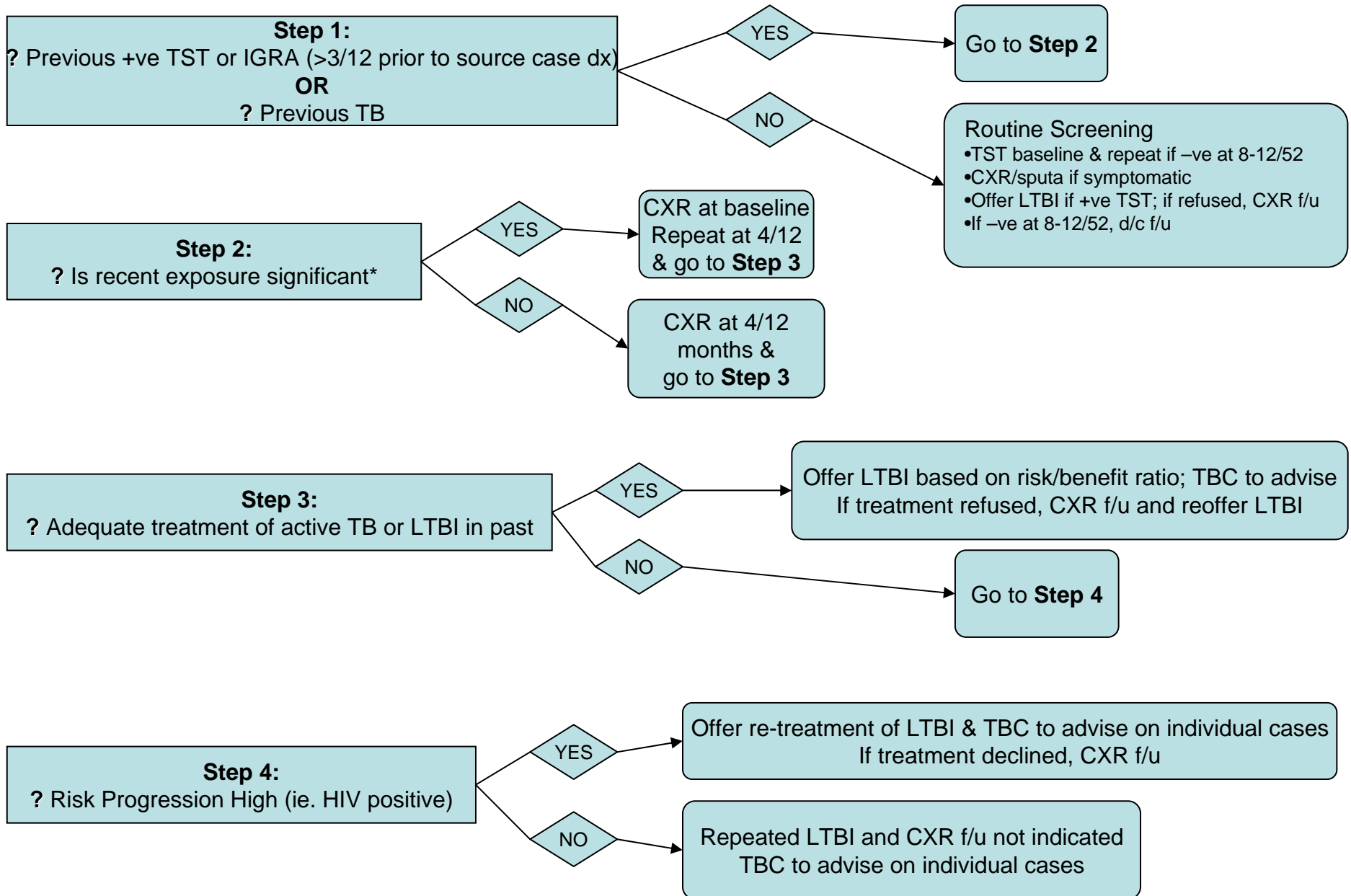
Symptom Assessment

- Ask at every encounter
- Collect sputums if symptomatic
- If AFB negative & symptoms persist, collect again after 3-4 weeks and inform GP to consider repeat CXR

NOTE:

For those who are re-exposed and have a previous positive TST and/or previous LTBI treatment (remote or recent) see: Contact Tracing Guidelines: Previous Positive Contacts

TB CI Guidelines: How do you deal with TB Contacts that are TST and/or IGRA positive?



*significant exposure = massive, highly infectious source case, exposure over a prolonged time or repeated exposures