



BC Centre for Disease Control



*Excellence
Program*

*2000 Silver
Level Recipient*

HIV / AIDS UPDATE

Year End 2000

British Columbia Centre for Disease Control Society
STD/AIDS Control

prepared by

Robbie G. MacDougall, Research Officer
Michael L. Rekart, MD, FRCPC, DTM&H, Director
Linda Knowles, BSN Nursing Administrator
Daphne Spencer, RN, HIVSS
Lisa Elliott, RN, HIVSS

Table of Contents

	Page
AIDS in British Columbia	3
AIDS Case Reports by:	
Table 1.1 Year of Diagnosis, 1984 to 2000	4
Graph 1.1 Year of Diagnosis, 1988 to 2000	4
Table 1.2 Age and Year of Diagnosis - MALES, 1995 to 2000	5
Table 1.3 Age and Year of Diagnosis - FEMALES, 1995 to 2000	5
Table 1.4 Age and Year of Diagnosis - TOTAL, 1995 to 2000	6
Graph 1.2 Gender and Year of Diagnosis, 1990 to 2000	6
Graph 1.3 Age and Year of Diagnosis, 1990 to 2000	7
Graph 1.4 Risk Category and Year of Diagnosis, 1990 to 2000	7
Table 1.5 Risk Category, Gender and Year of Diagnosis, 1995 to 2000	8
Table 1.6 Ethnicity, Gender and Year of Diagnosis, 1995 to 2000	9
Table 1.7 Health Region and Year of Diagnosis, 1995 to 2000	10
Table 1.7 Health Region and Year of Diagnosis, 1995 to 2000 (continued)	11
Table 1.8 First Disease Indicative of AIDS and Year of Diagnosis, 1983 to 2000 ..	12
Graph 1.5 Year of Diagnosis for BC and Canada, 1990 to 2000	13
Graph 1.6 Age and Gender for BC, 2000	14
Graph 1.7 Health Region for BC, 2000	15
HIV In British Columbia	16
Persons Testing Newly Positive for HIV by:	
Table 2.1 Year of Diagnosis, 1985 to 2000	17
Graph 2.1 Year of Diagnosis, 1990 to 2000	18
Table 2.2 Age and Year - MALES, 1995 to 2000	19
Table 2.3 Age and Year - FEMALES, 1995 to 2000	20
Table 2.4 Age and Year - UNKNOWN, 1995 to 2000	21
Graph 2.2 Gender and Year, 1990 to 2000	22
Table 2.5 Age and Year - TOTAL, 1995 to 2000	23
Graph 2.3 Age and Year, 1990 to 2000	24
Graph 2.4 Risk Category and Year, 1990 to 2000	25
Table 2.6 Risk Category and Year - MALES, 1995 to 2000	26
Table 2.7 Risk Category and Year - FEMALES, 1995 to 2000	27
Table 2.8 Risk Category and Year - UNKNOWN, 1995 to 2000	28
Table 2.9 Risk Category and Year - TOTAL, 1995 to 2000	29
Table 2.10 Ethnicity and Year - MALES, 1995 to 2000	30
Table 2.11 Ethnicity and Year - FEMALES, 1995 to 2000	31
Graph 2.5 Ethnicity and Year - MALES, 1995 to 2000	32
Graph 2.6 Ethnicity and Year - FEMALES, 1995 to 2000	33
Table 2.12 Ethnicity and Year - UNKNOWN, 1995 to 2000	34
Table 2.13 Ethnicity and Year - TOTAL, 1995 to 2000	35
Table 2.14 Health Region and Year, 1995 to 2000	36
Table 2.15 Specimen Source and Year, 1995 to 2000	38
Table 2.16 Maternal Antibody Positive Versus True HIV Infection, 1992 to 2000	39
Table 2.17 Prenatal Screening, 1995 to 2000	39
Graph 2.7 HIV by Year for BC, 1990 to 2000	40
Graph 2.8 HIV by AGE and Gender, 2000	41
Graph 2.9 HIV by Health Region, 2000	42
HIV Footnotes	43

AIDS IN BRITISH COLUMBIA

Prior to 1997, AIDS case reports were electronically compiled courtesy of the Vancouver Health Department. We'd like to take this opportunity to thank the Vancouver Health Department for their assistance with the AIDS data. Their cooperation was essential to the preparation of past reports.

To avoid duplicate data entry and to improve timelines, we have decided to use AIDS data entered by the Division of HIV/AIDS Surveillance, Bureau of HIV/AIDS and STD, Laboratory Centre for Disease Control, Health Protection Branch, Health Canada.

Any potential discrepancies between reports from the first quarter of 1997 onward and previous AIDS Update reports may be attributed to the transition from the use of the Vancouver Health Department's AIDS data to the use of Health Canada's AIDS data.

Detailed pre-1994 statistics are not provided in this semi-annual report due to page limitations but are available upon request. Please forward your request to the STD/AIDS Resource Centre by telephoning (604) 660-2090, faxing (604) 775-0808, or writing to:

British Columbia Centre for Disease Control Society
Division of STD/AIDS Control
STD/AIDS Resource Centre
655 West 12th Avenue
Vancouver BC V5Z 4R4

Acknowledgements:

Division of HIV/AIDS Surveillance, Bureau of HIV/AIDS and STD, Laboratory Centre for Disease Control, Health Protection Branch, Health Canada, for allowing us the use of their AIDS data.

Physicians, healthcare providers, and public health staff in British Columbia for taking the time and effort to complete and submit their AIDS case report forms.

Dr. Robert Hogg and Benita Yip from the BC Centre for Excellence in HIV/AIDS for their assistance in improving the reporting of new AIDS cases.

Table 1.1
AIDS Case Reports by YEAR OF DIAGNOSIS, 1984 to 2000

Year of Diagnosis	Cases Reported	Rate	Cumulative Cases
1983	9	0.31	9
1984	29	0.98	38
1985	61	2.04	99
1986	106	3.53	205
1987	135	4.43	340
1988	175	5.62	515
1989	223	6.97	738
1990	224	6.81	962
1991	265	7.86	1,227
1992	287	8.27	1,514
1993	296	8.29	1,810
1994	294	7.99	2,104
1995	251	6.63	2,355
1996	156	4.02	2,511
1997	146	3.69	2,657
1998	144	3.59	2,801
1999	111	2.74	2,912
2000	88	2.16	3,000
TOTAL:	3,000		

2000 figures are year-to-date
 Rate per 100,000 population

Graph 1.1
AIDS Case Reports by YEAR OF DIAGNOSIS, 1988 to 2000

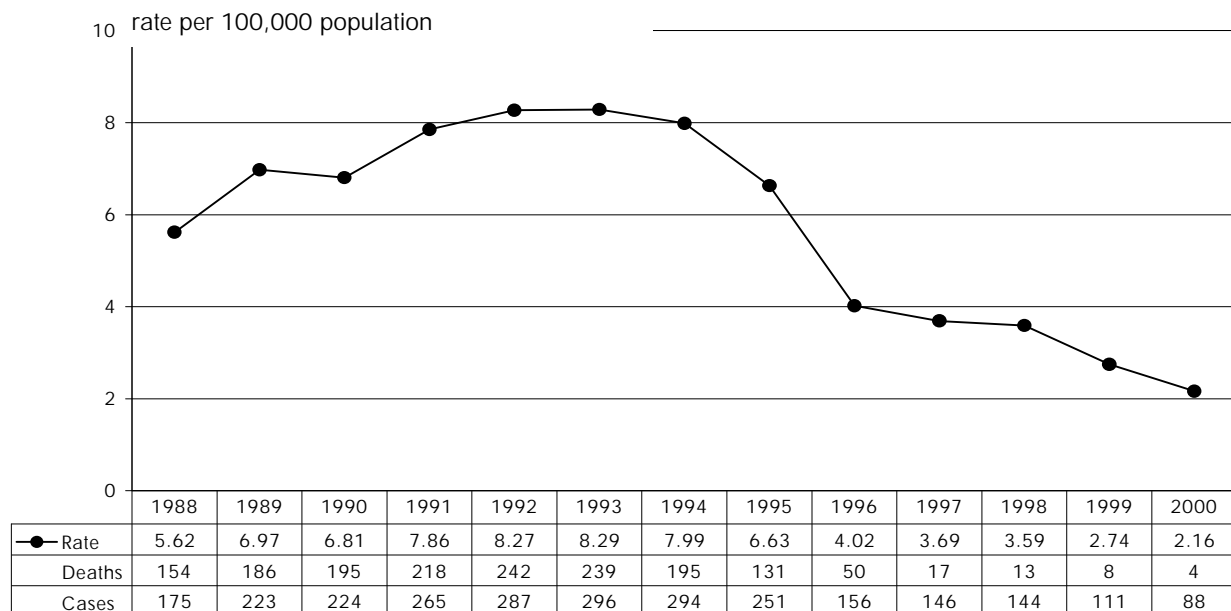


Table 1.2

AIDS Case Reports by AGE and YEAR OF DIAGNOSIS - MALES, 1995 to 2000

Age	AIDS	1995	1996	1997	1998	1999	2000	TOTAL
<15	cases	2	1	1	1			9
	rate	0.52	0.26	0.26	0.26			
15 to 19	cases	1						8
	rate	0.80						
20 to 29	cases	22	14	13	12	4	3	366
	rate	7.93	4.95	4.57	4.25	1.43	1.10	
30 to 39	cases	109	73	52	44	42	35	1,266
	rate	32.37	21.39	15.16	12.91	12.40	10.54	
40 to 49	cases	67	40	40	48	30	20	864
	rate	22.94	13.10	12.75	14.95	9.14	5.99	
50+	cases	31	16	13	19	15	20	310
	rate	6.55	3.28	2.57	3.62	2.77	3.56	
unknown	cases					1	3	4
total:	cases	232	144	119	124	92	81	2,827
	rate	12.30	7.45	6.04	6.22	4.57	4.01	

Table 1.3

AIDS Case Reports by AGE and YEAR OF DIAGNOSIS - FEMALES, 1995 to 2000

Age	AIDS	1995	1996	1997	1998	1999	2000	TOTAL
<15	cases			2				6
	rate			0.54				
15 to 19	cases		1					1
	rate		0.81					
20 to 29	cases	5	2	3	3	1	2	40
	rate	1.88	0.73	1.09	1.09	0.37	0.74	
30 to 39	cases	10	6	16	11	9	2	79
	rate	3.02	1.79	4.75	3.28	2.69	0.61	
40 to 49	cases	3	1	4	5	7	1	31
	rate	1.03	0.33	1.28	1.56	2.13	0.30	
50+	cases	1	2	2	1	2		14
	rate	0.19	0.37	0.35	0.17	0.33		
unknown	cases						2	2
total:	cases	19	12	27	20	19	7	173
	rate	1.00	0.62	1.36	0.99	0.93	0.34	

2000 figures are year-to-date

RATE is per 100,000 population.

TOTAL column to the far right is cumulative from 1983 to year-to-date 2000

Table 1.4
AIDS Case Reports by AGE and YEAR OF DIAGNOSIS - TOTAL, 1995 to 2000

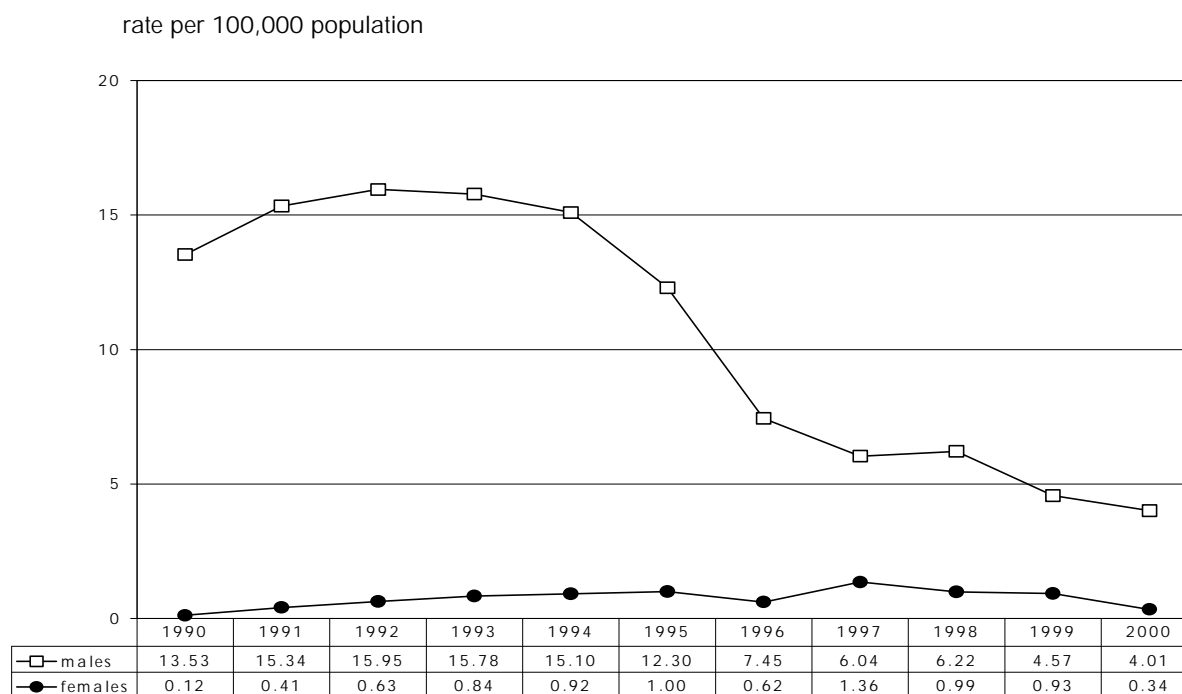
Age	AIDS	1995	1996	1997	1998	1999	2000	TOTAL
<15	cases	2	1	3	1	-	-	15
	rate	0.27	0.13	0.40	0.13			
15 to 19	cases	1	1	-	-	-	-	9
	rate	0.41	0.39					
20 to 29	cases	27	16	16	15	5	5	406
	rate	4.97	2.88	2.86	2.69	0.91	0.92	
30 to 39	cases	119	79	68	55	51	37	1,345
	rate	17.81	11.67	10.00	8.13	7.58	5.60	
40 to 49	cases	70	41	44	53	37	21	895
	rate	12.03	6.73	7.02	8.25	5.63	3.13	
50+	cases	32	18	15	20	17	20	324
	rate	3.18	1.74	1.40	1.80	1.48	1.69	
unknown	cases	-	-	-	-	1	5	6
total:	cases	251	156	146	144	111	88	3,000
	rate	6.63	4.02	3.69	3.59	2.74	2.16	

RATE is per 100,000 population.

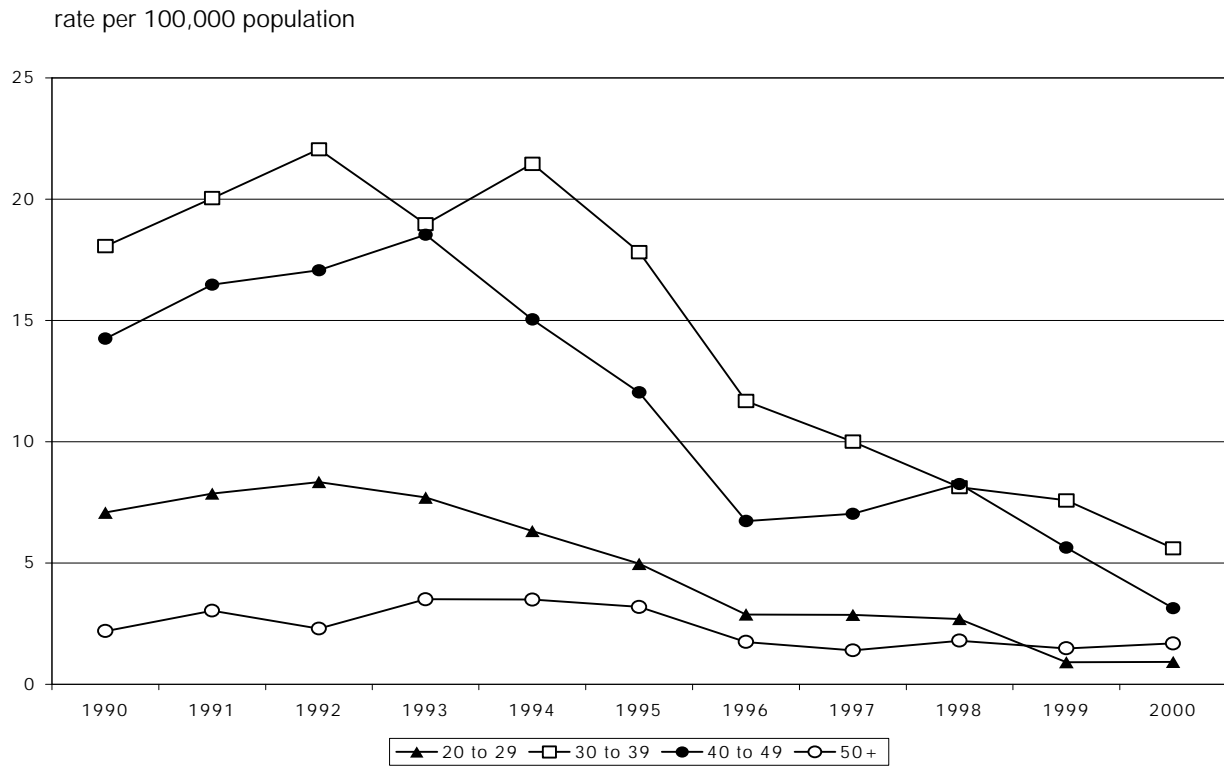
TOTAL column to the far right is cumulative from 1983 to year-to-date 2000.

2 Transgender AIDS case reports: 1997 and 1999.

Graph 1.2
AIDS Case Reports by GENDER and YEAR OF DIAGNOSIS, 1990 to 2000



Graph 1.3
AIDS Case Reports by AGE and YEAR OF DIAGNOSIS, 1990 to 2000



Graph 1.4
AIDS Case Reports by RISK CATEGORY AND YEAR OF DIAGNOSIS, 1990 to 2000

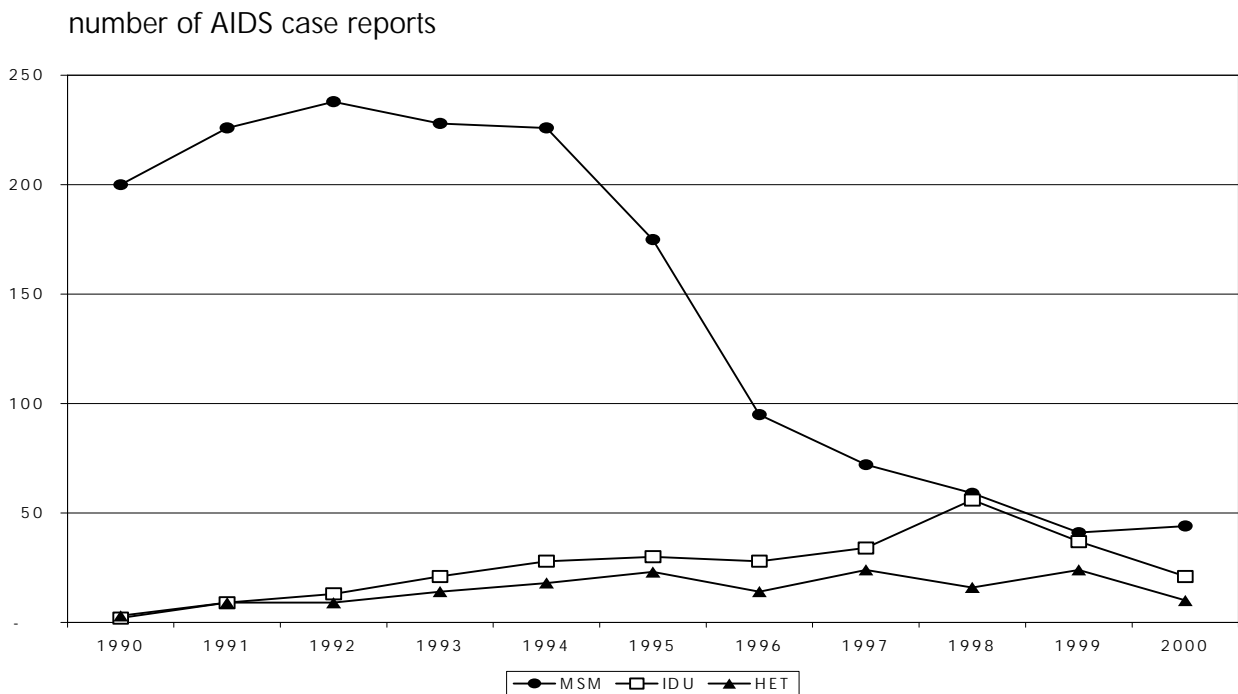


Table 1.5

AIDS Case Reports by RISK CATEGORY, GENDER, and YEAR OF DIAGNOSIS, 1995 to 2000

Risk Category	AIDS	1995	1996	1997	1998	1999	2000	TOTAL
MSM or WSW	m ales	175	95	72	59	41	44	2,264
	fem ales							
	total	175	95	72	59	41	44	2,264
MSM/IDU or WSW/IDU	m ales	12	14	6	1	7	2	141
	fem ales							
	total	12	14	6	1	7	2	141
IDU	m ales	21	22	20	40	29	17	202
	fem ales	9	6	14	16	8	4	83
	total	30	28	34	56	37	21	285
heterosexual contact	m ales	13	9	15	14	14	7	107
	fem ales	10	5	9	2	10	3	68
	total	23	14	24	16	24	10	175
hemophilic	m ales	2	3	1			1	26
	fem ales							2
	total	2	3	1			1	28
blood/BP recipient	m ales							11
	fem ales				1			9
	total				1			20
perinatal	m ales	2	1	1	1			8
	fem ales			1				5
	total	2	1	2	1			13
unknown	m ales	7		4	9	1	10	68
	fem ales		1	3	1	1		6
	total	7	1	7	10	2	10	74
total:	m ales	232	144	119	124	92	81	2,827
	fem ales	19	12	27	20	19	7	173
	total	251	156	146	144	111	88	3,000

TOTAL column to the far right is cumulative from 1983 to year-to-date 2000.
2 Transgender AIDS case reports: 1997 and 1999.

MSM - men who have sex with men
WSW - women who have sex with women
IDU - injection drug user
blood/BP recipient - blood or blood product recipient

Table 1.6
AIDS Case Reports by ETHNICITY, GENDER and YEAR OF DIAGNOSIS, 1995 to 2000

Ethnicity	AIDS	1995	1996	1997	1998	1999	2000	TOTAL
Caucasian	males	187	116	95	85	66	68	2,254
	females	11	10	12	9	8	4	97
	total	198	126	107	94	74	72	2,351
First Nations	males	19	15	12	18	14	7	142
	females	2	2	11	10	6	1	40
	total	21	17	23	28	20	8	182
Asian	males	7	3	3	3	2	2	43
	females					1		4
	total	7	3	3	3	3	2	47
South Asian	males	3	1	1	3	3	1	25
	females	1						2
	total	4	1	1	3	3	1	27
Inuit	males			1				3
	females	1						1
	total	1		1				4
Metis	males	1		3	1			7
	females							
	total	1		3	1			7
Black	males	6	6	3	4	4		43
	females	2		3		3	2	15
	total	8	6	6	4	7	2	58
Hispanic	males	1	2		4	2	1	33
	females	1		1				3
	total	2	2	1	4	2	1	36
Arab/West Asian	males	1	1		1		1	5
	females							
	total	1	1		1		1	5
other	males	2			3			17
	females					1		2
	total	2			3	1		19
unknown	males	5		1	2	1	1	255
	females	1			1			9
	total	6		1	3	1	1	264
total:	males	232	144	119	124	92	81	2,827
	females	19	12	27	20	19	7	173
	total	251	156	146	144	111	88	3,000

TOTAL column to the far right is cumulative from 1983 to year-to-date 2000.
 2 Transgender AIDS case reports: 1997 and 1999.

Table 1.7

AIDS Case Reports by HEALTH REGION* and YEAR OF DIAGNOSIS, 1995 to 2000

Health Region	AIDS	1995	1996	1997	1998	1999	2000	TOTAL
Burnaby	cases	5	2	5	2	4	2	65
	rate	2.73	1.07	2.65	1.06	2.09	1.04	
Capital	cases	25	24	2	2	1	7	221
	rate	7.60	7.23	0.60	0.60	0.30	2.09	
Cariboo	cases		1			1		6
	rate		1.36			1.31		
Central Fraser Valley	cases	2						15
	rate	0.95						
Central Vancouver Island	cases	5	2	6	5		2	47
	rate	2.19	0.86	2.51	2.06			
Coast Garibaldi	cases	2		1	1	1	2	22
	rate	2.83		1.31	1.28	1.25	2.51	
East Kootenay	cases	3	1					7
	rate	3.88	1.26					
Fraser Valley	cases	2	1	3	3	-	1	33
	rate	0.89	0.43	1.27	1.26		0.41	
Kootenay Boundary	cases	-	3	2	-	-	-	13
	rate		3.68	2.43				
North Okanagan	cases	-	-	-	3	-	1	6
	rate				2.54		0.84	
North Shore	cases	13	3	6	4	6	4	103
	rate	7.48	1.70	3.36	2.22	3.32	2.21	
North West	cases	1	-	1	-	1	1	9
	rate	1.13		1.09		1.10	1.10	

RATE is per 100,000 population.

TOTAL column to far right is cumulative from 1983 to year-to-date 2000.

CENTRAL FRASER VALLEY - As of 1996, any AIDS case reports, by year of diagnosis, that fall within the areas previously served by Central Fraser Valley Health Unit will now be designated to the following health regions: Mission to Fraser Valley; Maple Ridge and Pitt Meadows to Simon Fraser; and Langley to South Fraser.

* HEALTH REGION - An AIDS case report, by year of diagnosis, is designated to the appropriate HEALTH REGION according to the patient's place of residence at the time of his/her diagnosis of AIDS (i.e. first disease indicative of AIDS).

Table 1.7 (continued)

AIDS Case Reports by HEALTH REGION* and YEAR OF DIAGNOSIS, 1995 to 2000

Health Region	AIDS	1995	1996	1997	1998	1999	2000	TOTAL
Northern Interior	cases	1	4	6	4	2	-	24
	rate	0.79	3.10	4.54	2.99	1.50		
Okanagan Similkameen	cases	-	-	3	1	4	2	37
	rate			1.33	0.43	1.73	0.87	
Peace Liard	cases	-	-	-	-	-	-	8
	rate							
Richmond	cases	5	1		1	2	2	37
	rate	3.35	0.65		0.62	1.21	1.21	
Simon Fraser	cases	5	3	5	1	5	3	61
	rate	1.72	0.99	1.61	0.32	1.55	0.93	
South Fraser	cases	13	2	3	4	3	6	94
	rate	2.47	0.37	0.54	0.71	0.52	1.04	
Thompson	cases	2	1	2	6	-	-	19
	rate	1.58	0.77	1.50	4.43			
Upper Island	cases	-	-	1	1	1	1	16
	rate			0.82	0.81	0.81	0.81	
Vancouver	cases	163	104	85	88	62	41	2,038
	rate	30.70	19.04	15.28	15.61	10.86	7.18	
unknown	cases	4	4	15	18	18	13	119
	rate							
total:	cases	251	156	146	144	111	88	3,000
	rate	6.63	4.02	3.69	3.59	2.74	2.18	

RATE is per 100,000 population.

TOTAL column to far right is cumulative from 1983 to year-to-date 2000.

* HEALTH REGION - An AIDS case report, by year of diagnosis, is designated to the appropriate HEALTH REGION according to the patient's place of residence at the time of his/her diagnosis of AIDS (i.e. first disease Indicative of AIDS).

Table 1.8

AIDS Case Reports by FIRST DISEASE INDICATIVE OF AIDS and YEAR OF DIAGNOSIS, 1983 to 2000

Year of Diagnosis	KS	PCP	OI	OM	HIV WS	HIV ENC	None	TOTAL
1983	2	3	4	-	-	-	-	9
1984	14	8	7	-	-	-	-	29
1985	13	27	15	6	-	-	-	61
1986	27	41	32	5	-	-	1	106
1987	24	69	30	9	1	2	-	135
1988	31	85	36	10	5	8	-	175
1989	49	103	54	7	6	4	-	223
1990	38	87	65	15	6	13	-	224
1991	45	112	81	7	11	9	-	265
1992	45	105	104	10	11	12	-	287
1993	37	92	117	14	22	14	-	296
1994	44	87	114	13	17	19	-	294
1995	33	70	102	7	19	20	-	251
1996	21	43	67	9	11	4	1	156
1997	15	35	66	12	8	9	1	146
1998	13	44	64	3	17	2	1	144
1999	12	41	41	5	9	3	-	111
2000	9	41	26	4	6	-	2	88
total:	472	1,093	1,025	136	149	119	6	3,000

2000 figures are year-to-date .

AIDS case reports formally classified as "KS and PCP" are now classified as either "KS" or "PCP".

KS - Kaposi's sarcoma

PCP - Pneumocystis carinii pneumonia

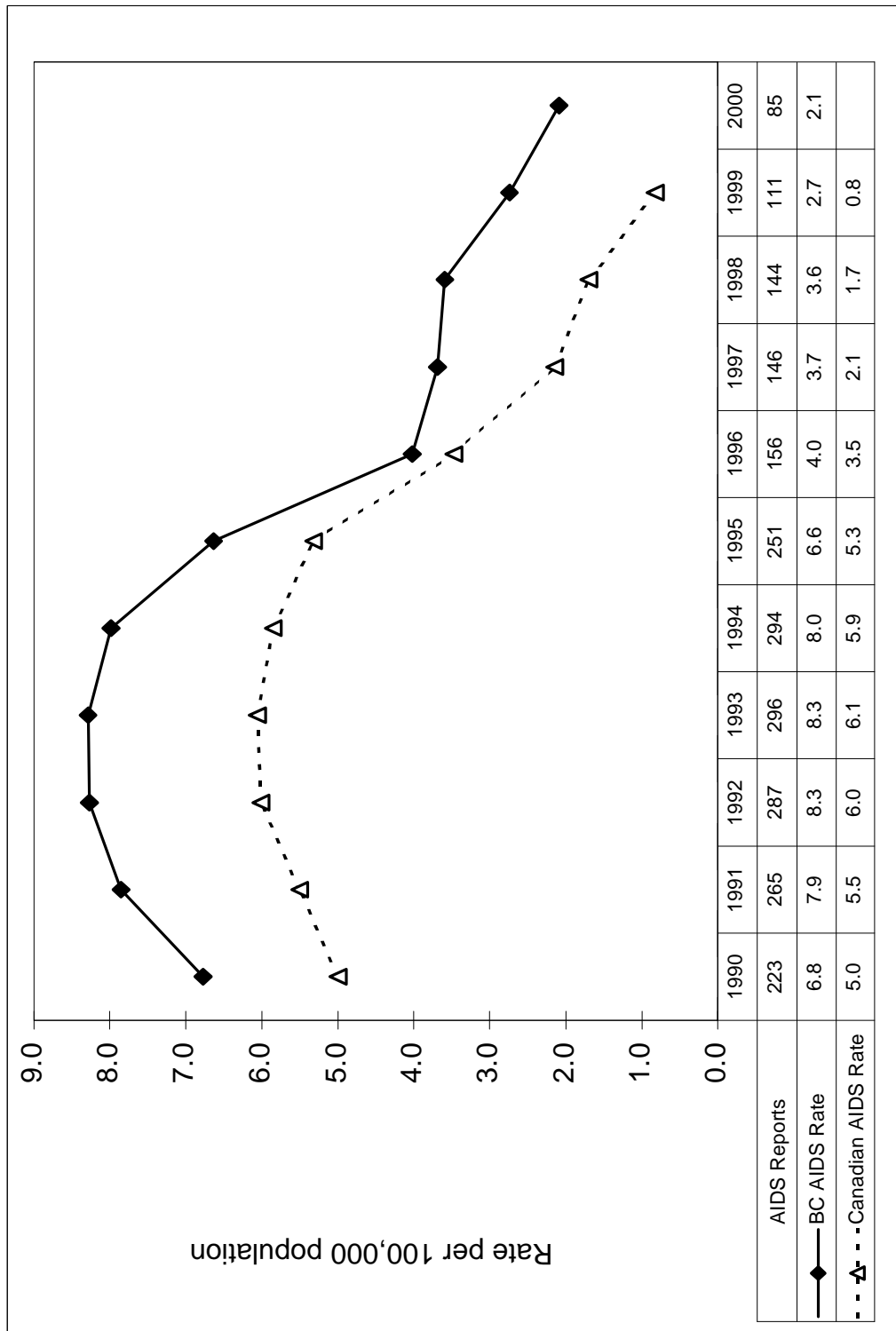
OI - other opportunistic infections

OM - other malignancies

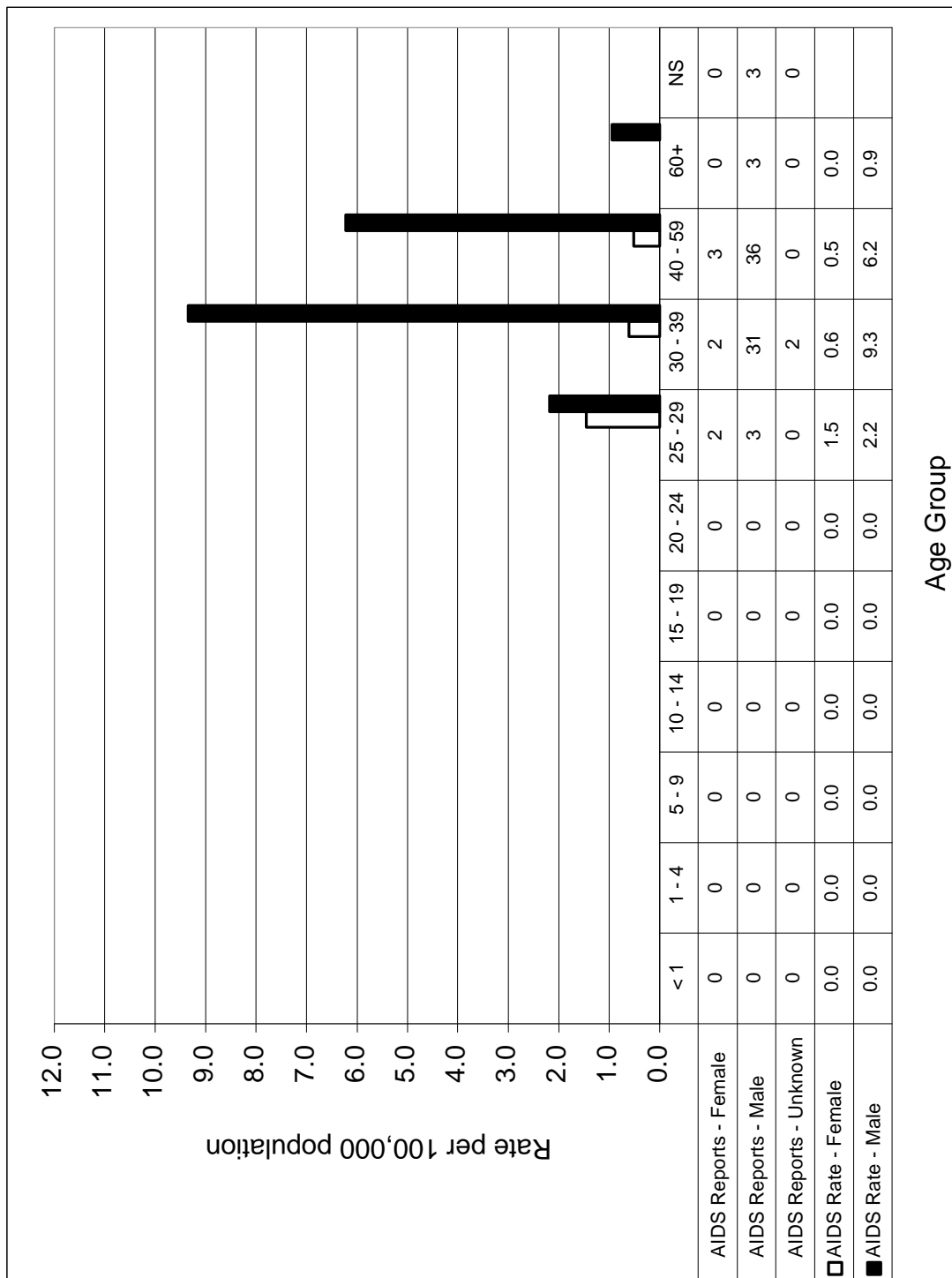
HIV WS - Wasting syndrome due to HIV

HIV ENC - Encephalopathy, HIV-related

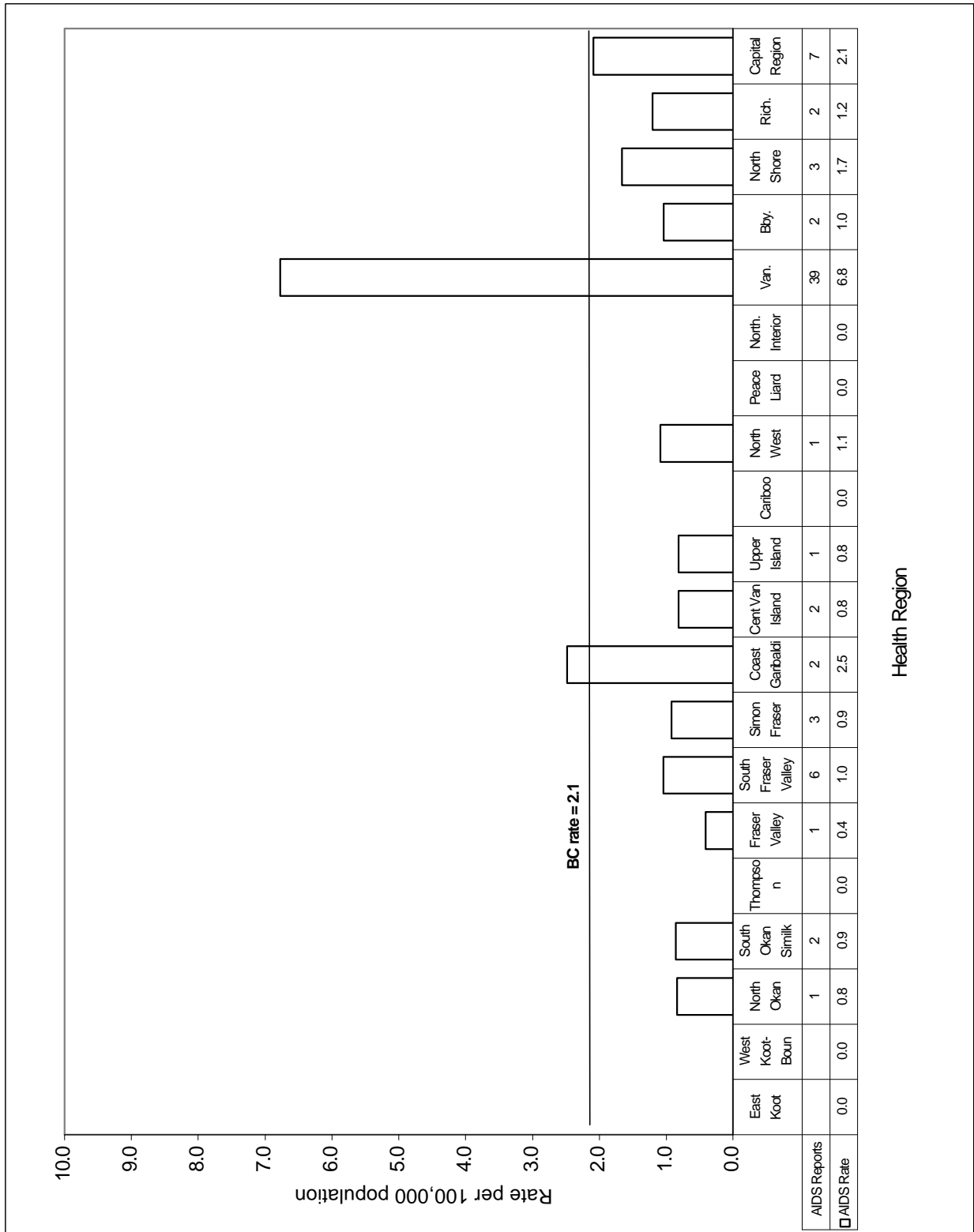
Graph 1.5
AIDS Case Reports by YEAR OF DIAGNOSIS for BC and Canada 1990 to 2000



Graph 1.6
AIDS Case Reports by AGE and GENDER for BC, 2000



Graph 1.7
AIDS Case Reports by HEALTH REGION for BC, 2000



HIV IN BRITISH COLUMBIA

In many jurisdictions, the use of HIV testing data to obtain an accurate view of the epidemic has been hampered by concerns over confidentiality. Consequent omission of unique patient identifiers from testing requisitions and data sets lead to difficulty with identifying duplicate tests for the same individual and with obtaining missing risk and demographic data.

Some jurisdictions in Canada have chosen to address the above concerns by adopting a system of nominal testing and reporting. Rather than opting to modify a system of non-nominal HIV testing which has been accepted by physicians and community groups in British Columbia, the division of STD/AIDS Control sought to improve HIV surveillance by enhancing and making better use of non-nominal information already in place.

The non-nominal *Enhanced HIV Surveillance System* (HIVSS) involves the following:

- Reporting of all positive HIV tests from the Provincial Laboratory to a surveillance database.
- A computerized algorithm to identify duplicate HIV testing reports.
- A nurse/epidemiologist to perform follow-up on all positive HIV test reports with the submitting healthcare providers. This serves to obtain missing information, validate existing information, and resolve outstanding questions of duplication. Also at this time, a selection of resources for assistance in case management is offered. During this interaction, a nurse/epidemiologist does not request client names when codes or initials have been used on requisitions.

Interpretation of HIV Tables:

In previous *Reports* (pre-1997), the HIV tables represented the number of reactive test reports without the removal of duplicates. With the HIVSS in place since January 1995, duplicate HIV test reports are now identified and removed from the data set.

For HIV test reports between 1985 and 1994, duplicates were removed by automated methods only. Since 1995, however, HIV test reports have been carefully examined by BOTH automated and manual methods which thus further improve the detection of duplicates. HIV data in the following tables now more closely represent the number of individuals with a new positive HIV test report.

Acknowledgements:

HIVSS team:	David M. Patrick, MD, FRCPC, MHSc	Daphne Spencer, RN
	Michael L. Rekart, MD, FRCPC, DTM&H	Lynn Wittenberg, RN
	Darrel Cook, MSc	Anthony Rees, RN
	Mel Krajden, MD, FRCP(C)	Lisa Elliott, RN
	Robbie MacDougall	

Staff from the Virology Laboratory, Provincial Laboratory, British Columbia Centre for Disease Control Society, for the collecting and compiling of HIV data.

Division of HIV/AIDS Surveillance, Bureau of HIV/AIDS and STD, Laboratory Centre for Disease Control, Health Protection Branch, Health Canada, for their financial contribution to the initial phases of this HIVSS project.

Staff from the University of British Columbia (UBC) Virology and Reference Laboratory for providing their HIV data.

Table 2.1
Persons Testing Newly Positive for HIV by YEAR, 1985 to 2000

Year	Persons	Rate	Tests
1985	220	7.4	1,362
1986	670	22.3	5,328
1987	929	30.5	35,783
1988	746	23.9	28,866
1989	726	22.7	30,302
1990	645	19.6	38,024
1991	704	20.9	54,310
1992	788	22.7	84,419
1993	706	19.8	92,606
1994	840	22.8	104,118
1995	690	18.2	130,338
1996	714	18.4	138,250
1997	561	14.2	140,278
1998	482	12.0	137,701
1999	427	10.6	135,284
2000	413	10.2	135,488
TOTAL:	10,261	-	1,292,457

2000 figures are year-to-date.

TESTS is the number of HIV tests performed, positive and negative, at the Provincial Laboratory.

RATE is per 100,000 population.

1985 annual total is for the months of October, November and December only.

Graph 2.1
Persons Testing Newly Positive for HIV by YEAR, 1990 to 2000

rate per 100,000 population

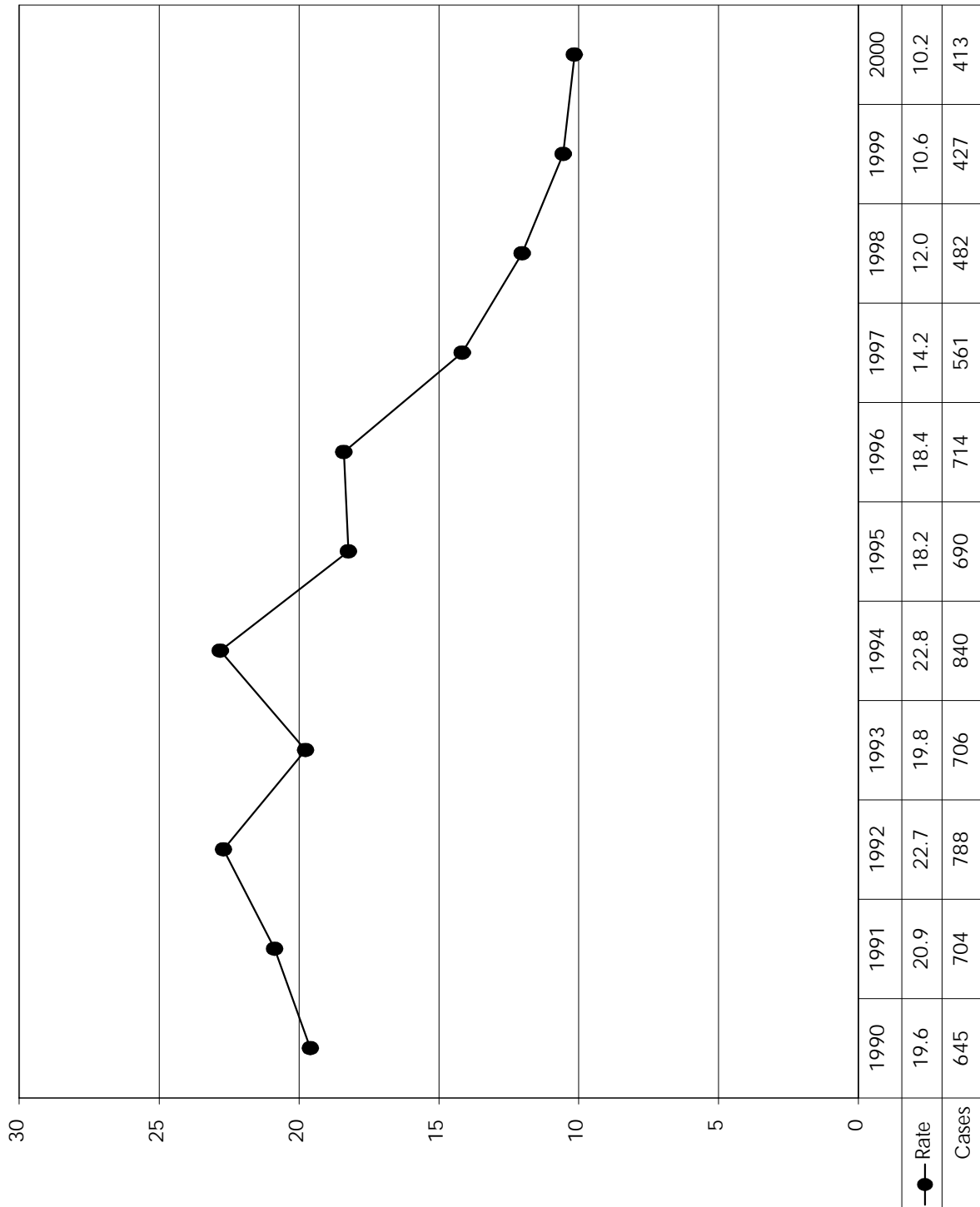


Table 2.2
Persons Testing Newly Positive for HIV by AGE and YEAR - MALES, 1995 to 2000

Age	HIV	1995	1996	1997	1998	1999	2000	TOTAL
<18 mos	persons	2	1	2	1			15
	rate	2.73	1.35	2.70	1.37			
19 mos to 14 yrs	persons	3	1	1	2	1	2	28
	rate	0.98	0.32	0.32	0.63	0.32	0.64	
< 15 yrs	tests	1,021	394	682	544	489	495	5,957
15 to 19	persons	1	6	2	3	3	3	73
	rate	0.80	4.58	1.49	2.20	2.18	2.16	
	tests	1,952	2,155	2,803	2,750	2,816	2,663	22,746
20 to 29	persons	125	98	88	57	52	63	2,212
	rate	45.05	34.63	30.96	20.17	18.61	23.00	
	tests	13,831	16,163	16,215	16,213	15,782	15,324	162,193
30 to 39	persons	227	255	199	163	139	120	3,573
	rate	67.41	74.70	58.00	47.82	41.05	36.15	
	tests	13,738	15,447	15,431	15,146	14,866	14,898	158,722
40 to 49	persons	126	128	107	103	75	86	1,777
	rate	43.15	41.92	34.10	32.08	22.86	25.74	
	tests	8,056	9,141	9,549	9,772	9,814	10,005	93,323
50+	persons	40	54	47	46	44	49	685
	rate	8.45	11.08	9.28	8.78	8.12	8.72	
	tests	5,736	5,623	6,156	6,180	6,569	7,189	61,884
unknown	persons	6		2	2	1	1	257
	tests	929	1,055	949	785	365	423	14,206
total:	persons	530	543	448	377	315	324	8,620
	rate	28.11	28.08	22.73	18.90	15.66	16.05	
	tests	45,263	49,978	51,785	51,390	50,701	50,997	519,031

2000 figures are year-to-date

TESTS is the number of HIV tests performed, positive and negative, at the Provincial Laboratory.

RATE is per 100,000 population

TOTAL column to far right is cumulative from 1985 to year-to-date 2000.

Table 2.3
Persons Testing Newly Positive for HIV by AGE and YEAR - FEMALES, 1995 to 2000

Age	HIV	1995	1996	1997	1998	1999	2000	TOTAL
< 18 mos	persons				1			7
	rate				1.46			
19 mos to 14 yrs	persons	1	1				1	6
	rate	0.34	0.34				0.34	
< 15 yrs	tests	945	581	956	846	835	723	7,276
15 to 19	persons	3	5	1	1	3	4	47
	rate	2.56	4.07	0.79	0.78	2.32	3.04	
	tests	6,022	7,031	8,271	8,138	7,802	7,607	62,100
20 to 29	persons	64	53	29	37	35	27	432
	rate	24.06	19.38	10.52	13.45	12.83	10.02	
	tests	28,988	32,991	33,240	33,187	32,694	32,120	281,516
30 to 39	persons	69	74	54	35	37	26	499
	rate	20.83	22.07	16.03	10.42	11.07	7.92	
	tests	24,193	26,977	26,462	26,425	26,951	27,460	231,952
40 to 49	persons	15	31	13	19	26	25	196
	rate	5.17	10.20	4.15	5.92	7.91	7.44	
	tests	7,952	8,595	9,022	8,779	8,797	9,130	79,816
50+	persons	2	3	5	3	10	5	50
	rate	0.38	0.55	0.88	0.51	1.66	0.80	
	tests	4,500	3,821	4,525	4,191	4,234	4,581	40,302
unknown	persons	2		1			1	36
	tests	1,458	1,672	1,404	1,230	525	539	16,736
total:	persons	156	167	103	96	111	89	1,273
	rate	8.22	8.57	5.18	4.76	5.46	4.35	
	tests	74,058	81,668	83,880	82,796	81,838	82,160	719,698

2000 figures are year-to-date

TESTS is the number of HIV tests performed, positive and negative, at the Provincial Laboratory.

RATE is per 100,000 population.

TOTAL column to far right is cumulative from 1985 to year to 2000 year-to-date.

Table 2.4

Persons Testing Newly Positive for HIV by AGE and YEAR - GENDER UNKNOWN, 1995 to 2000

Age	HIV	1995	1996	1997	1998	1999	2000	TOTAL
< 18 mos	persons							
19 mos to 14 yrs	persons			1				2
< 15 yrs	tests	185	41	43	32	24	35	555
15 to 19	persons							7
	tests	682	394	233	225	197	192	3,216
20 to 29	persons			1	1			69
	tests	4,135	2,089	1,166	927	681	597	17,362
30 to 39	persons		2	6	2			109
	tests	3,289	1,763	1,007	747	491	495	14,001
40 to 49	persons		1	1	2			60
	tests	1,289	700	462	313	225	267	5,947
50+	persons		1		1			21
	tests	1,033	494	319	215	167	248	4,186
unknown	persons	4		1	3	1		100
	tests	404	1,123	1,383	1,056	960	497	8,461
total:	persons	4	4	10	9	1	-	368
	tests	11,017	6,604	4,613	3,515	2,745	2,331	53,728

2000 figures are year-to-date

TESTS is the number of HIV tests performed, positive and negative, at the Provincial Laboratory.

TOTAL column to far right is cumulative from 1985 to 2000 year-to-date.

Graph 2.2
Persons Testing Newly Positive for HIV by GENDER and YEAR, 1990 to 2000

rate per 100,000 population

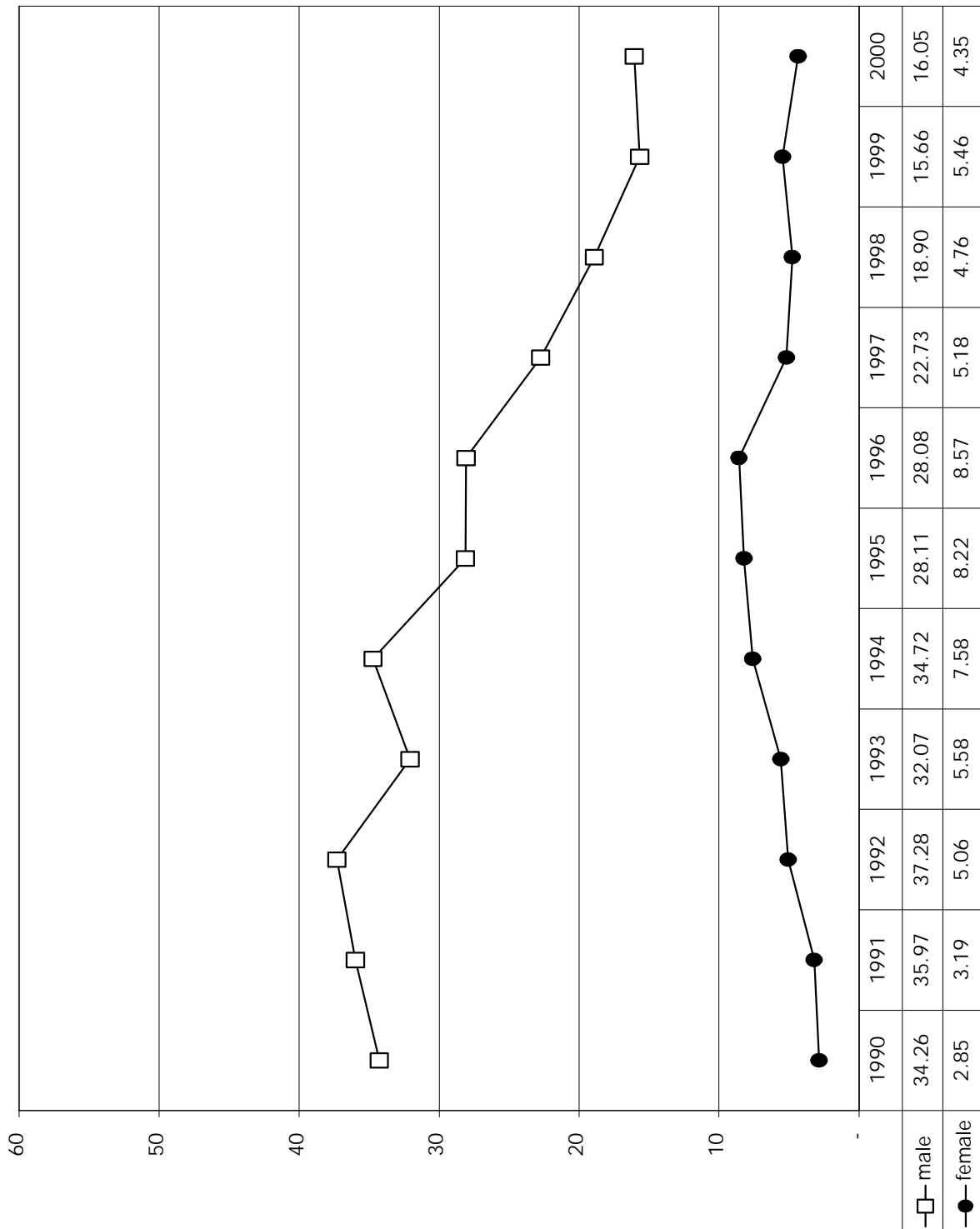


Table 2.5
Persons Testing Newly Positive for HIV by AGE and YEAR - TOTAL, 1995 to 2000

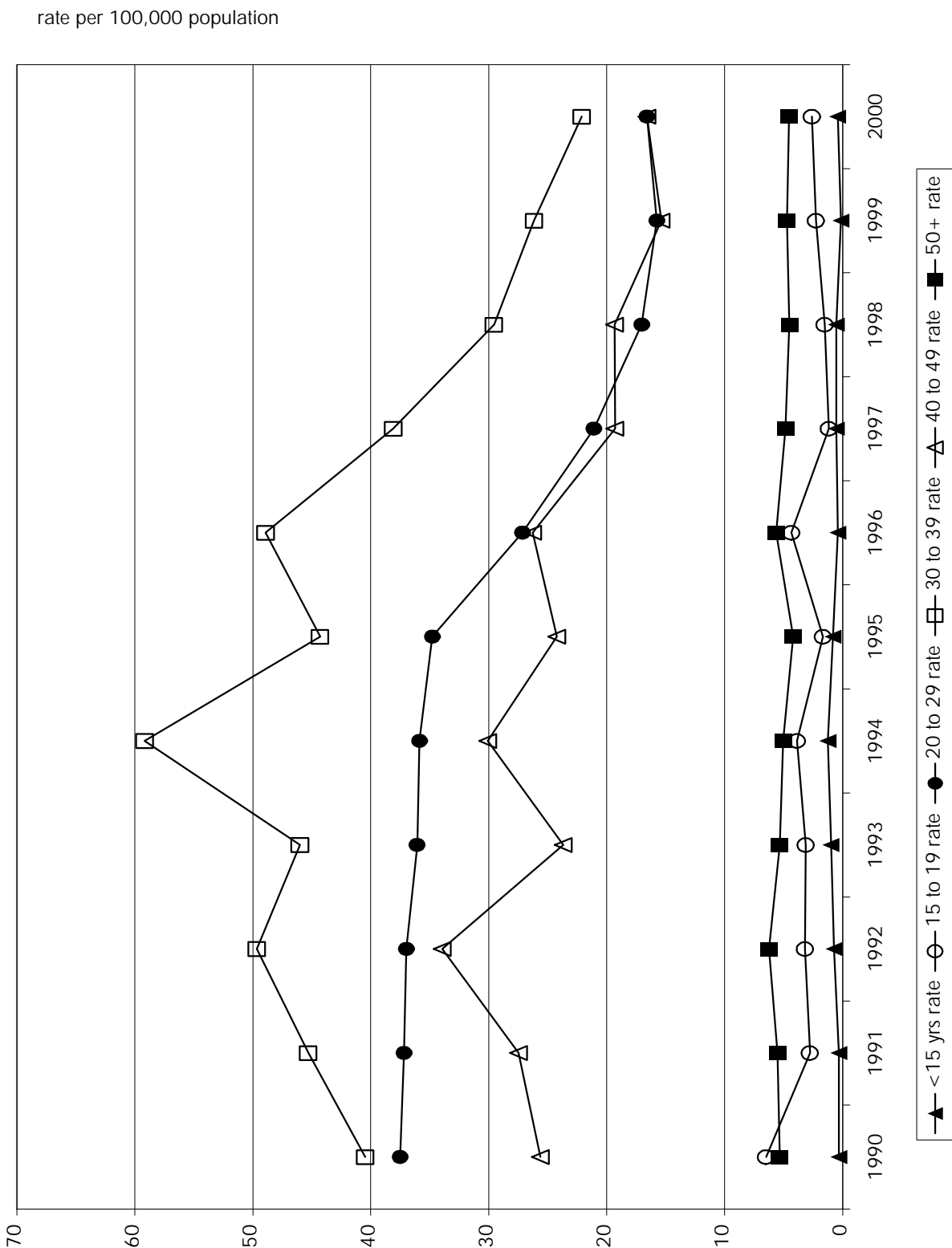
Age	HIV	1995	1996	1997	1998	1999	2000	TOTAL
< 15 yrs	persons	6	3	4	4	1	3	58
	rate	0.81	0.40	0.53	0.53	0.13	0.41	
	tests	2,151	1,016	1,681	1,422	1,348	1,253	13,788
15 to 19	persons	4	11	3	4	6	7	127
	rate	1.65	4.33	1.15	1.51	2.25	2.59	
	tests	8,656	9,580	11,307	11,113	10,815	10,462	88,062
20 to 29	persons	189	151	118	95	87	90	2,713
	rate	34.77	27.13	21.08	17.04	15.76	16.57	
	tests	46,954	51,243	50,621	50,327	49,157	48,041	461,071
30 to 39	persons	296	331	259	200	176	146	4,181
	rate	44.31	48.91	38.08	29.55	26.16	22.11	
	tests	41,220	44,187	42,900	42,318	42,308	42,853	404,675
40 to 49	persons	141	160	121	124	101	111	2,033
	rate	24.23	26.27	19.31	19.31	15.38	16.57	
	tests	17,297	18,436	19,033	18,864	18,836	19,402	179,086
50+	persons	42	58	52	50	54	54	756
	rate	4.18	5.61	4.84	4.50	4.71	4.55	
	tests	11,269	9,938	11,000	10,586	10,970	12,018	106,372
unknown	persons	12		4	5	2	2	393
	tests	2,791	3,850	3,736	3,071	1,850	1,459	39,403
total:	persons	690	714	561	482	427	413	10,261
	rate	18.23	18.39	14.17	12.02	10.55	10.15	
	tests	130,338	138,250	140,278	137,701	135,284	135,488	1,292,457

TESTS is the number of HIV tests performed, positive and negative, at the Provincial Laboratory.

RATE is per 100,000 population.

TOTAL column to far right is cumulative from 1985 to year-to-date 2000.

Graph 2.3
Persons Testing Newly Positive for HIV by AGE and YEAR, 1990 to 2000



Graph 2.4
Persons Testing Newly Positive for HIV by RISK CATEGORY and YEAR, 1990 to 2000

number of persons testing newly positive for HIV

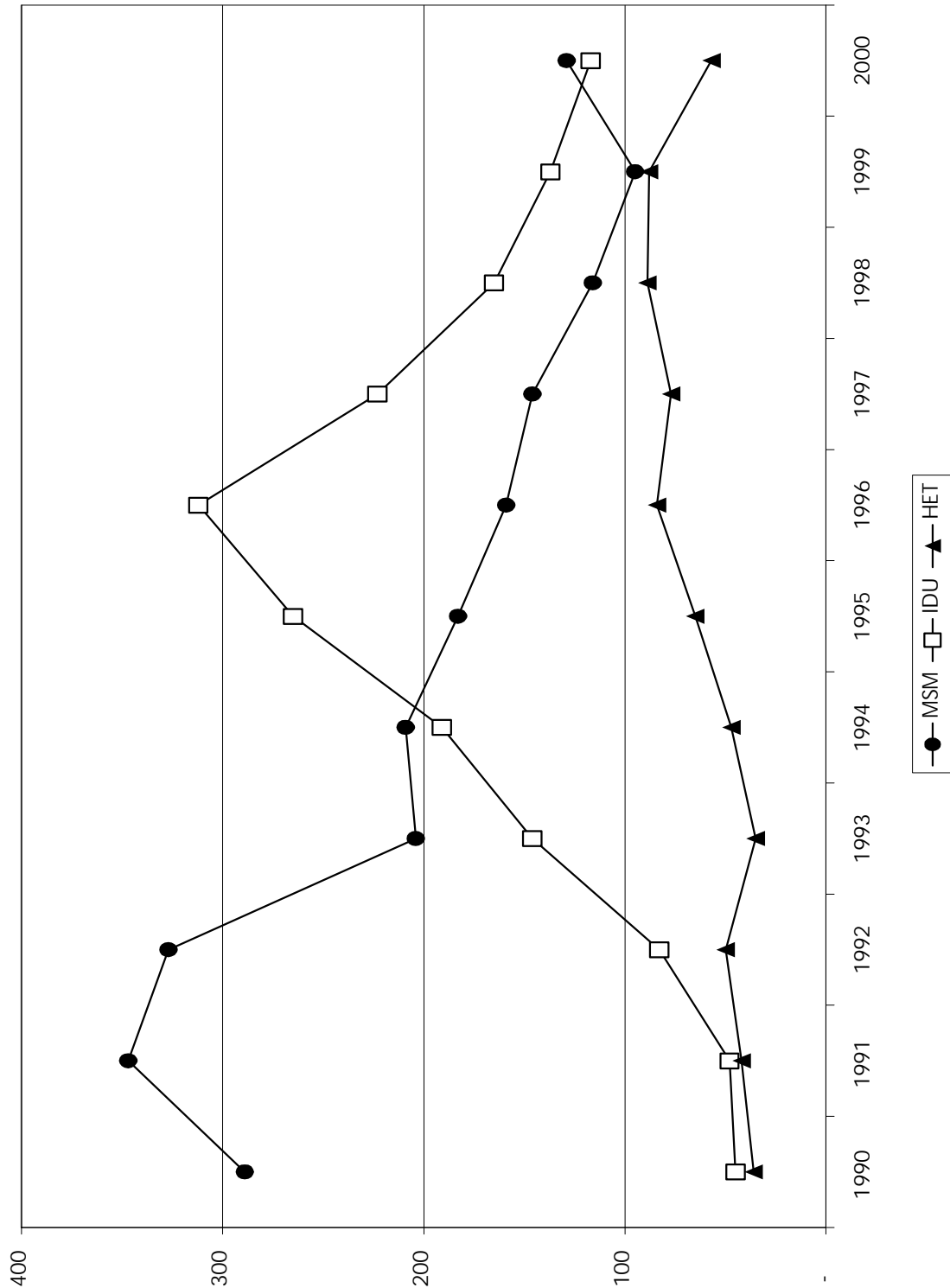


Table 2.6
Persons Testing Newly Positive for HIV by RISK CATEGORY and YEAR - MALES, 1995 to 2000

Risk Category	HIV	1995	1996	1997	1998	1999	2000	TOTAL
MSM	persons	183	159	146	116	95	129	4,585
	tests	4,074	4,068	3,871	3,536	3,192	3,138	53,570
MSM/IDU	persons	24	26	14	6	10	10	191
	tests	174	145	74	42	14	19	1,422
IDU	persons	196	240	168	125	93	91	1,353
	tests	3,706	3,896	2,335	2,303	1,732	1,508	31,654
heterosexual contact	persons	44	45	51	50	57	32	487
	tests	10,419	13,878	14,017	13,463	12,975	12,272	116,818
sex trade worker	persons	2	3	4		3	3	26
	tests	149	124	85	64	56	43	1,399
sex trade worker/IDU	persons	5	7	1	6	1	1	38
	tests	31	27	8	7	7	2	326
hemophiliac	persons						1	64
	tests	62	40	66	67	64	62	850
blood/BP recipient (1)	persons	5	3	1	2	2	4	57
	tests	2,462	728	1,125	451	231	182	11,723
unspecified PE (2)	persons	2						24
	tests	394	241	26	71	110	34	4,230
visa/employ /insurance	persons							10
	tests	328	283	347	283	252	252	2,940
occupational EXP (3)	persons	1			1		1	3
	tests	232	566	1,245	537	384	780	5,255
unknown	persons	61	56	60	60	39	46	1,713
	tests	22,797	25,617	28,332	30,387	31,499	32,217	283,479
other (4)	persons	2	2		8	14	6	46
	tests	421	350	219	161	167	483	5,221
perinatal < 18 mos (5)	persons	2	1	2	1			15
	tests							
delayed testing (6)	persons	3	1	1	2	1		8
	tests	14	15	35	18	18	5	144
total:	persons	530	543	448	377	315	324	8,620
	tests	45,263	49,978	51,785	51,390	50,701	50,997	519,031

2000 figures are year-to-date.

TESTS is the number of HIV tests performed, positive and negative, at the Provincial Laboratory.

TOTAL column to far right is cumulative from 1985 to year-to-date 2000.

MSM - men who have sex with men

IDU - injection drug user

visa/employ/insurance - visa/employment/insurance

unspecified PE - unspecified parenteral exposure

blood/BP Recipient - blood or blood product recipient

occupational EXP - occupational exposure

(1), (2), (3), (4), (5), and (6) - refer to FOOTNOTES on page 42

Table 2.7

Persons Testing Newly Positive for HIV by RISK CATEGORY and YEAR - FEMALES, 1995 to 2000

Risk Category	HIV	1995	1996	1997	1998	1999	2000	TOTAL
WSW	persons			2		1		15
	tests	472	515	408	370	327	302	4,053
WSW/IDU	persons	4	1	1	1		1	10
	tests	85	64	34	20	8	7	389
IDU	persons	69	70	49	37	43	26	409
	tests	1,502	1,600	1,004	841	708	537	13,657
heterosexual contact	persons	21	39	25	37	31	25	282
	tests	29,192	39,054	39,493	38,818	37,666	36,221	270,633
sex trade worker	persons		1		1	2	1	12
	tests	181	187	96	142	135	103	2,175
sex trade worker/IDU	persons	38	41	14	12	12	18	191
	tests	305	274	125	59	51	32	2,648
hemophiliac	persons							1
	tests	12	8	17	8	3	4	101
blood/BP recipient (1)	persons	2			1	1	1	37
	tests	4,314	1,233	1,753	635	321	237	19,255
unspecified PE (2)	persons	3						13
	tests	926	406	17	127	248	56	5,742
visa/employ /insurance	persons							-
	tests	230	214	228	228	198	202	2,268
occupational EXP (3)	persons							-
	tests	677	1,529	2,904	1,290	980	1,706	13,396
unknown	persons	18	13	12	6	14	12	277
	tests	35,695	36,219	37,485	40,018	40,928	42,208	380,168
other (4)	persons		1			7	5	17
	tests	448	344	287	217	247	532	5,058
perinatal < 18 mos (5)	persons				1			7
	tests							
delayed testing (6)	persons	1	1					2
	tests	19	21	29	23	18	13	155
total:	persons	156	167	103	96	111	89	1,273
	tests	74,058	81,668	83,880	82,796	81,838	82,160	719,698

2000 figures are year-to-date.

TESTS is the number of HIV tests performed, positive and negative, at the Provincial Laboratory.

TOTAL column to far right is cumulative from 1985 to year-to-date 2000

WSW - women who have sex with women

unspecified PE - unspecified parenteral exposure

IDU - injection drug user

blood/BP Recipient - blood or blood product recipient

visa/employ/insurance - visa/employment/insurance

occupational EXP - occupational exposure

(1), (2), (3), (4), (5), and (6) - refer to FOOTNOTES on page 42

Table 2.8
**Persons Testing Newly Positive for HIV by RISK CATEGORY and YEAR-GENDER
 UNKNOWN, 1995 to 2000**

Risk Category	HIV	1995	1996	1997	1998	1999	2000	TOTAL
MSM or WSW	persons			1	1			99
	tests	111	100	80	66	44	51	1,163
MSM/IDU or WSW/IDU	persons	2						4
	tests	13	9	1	2	2		51
IDU	persons		2	6	3	1		32
	tests	181	167	82	58	34	14	1,277
heterosexual contact	persons			1	2			18
	tests	2,333	2,042	1,518	1,316	964	716	11,723
sex trade worker	persons							1
	tests	16	4	5	5	-	2	110
sex trade worker/IDU	persons							3
	tests	6	6	2		1		68
hemophiliac	persons							3
	tests	4		1	3	-	1	23
blood/BP recipient (1)	persons							2
	tests	625	88	120	36	17	10	1,658
unspecified PE (2)	persons							2
	tests	83	39	3	9	10	1	423
visa/employ /insurance	persons							-
	tests	26	19	16	16	10	2	144
occupational EXP (3)	persons							-
	tests	32	133	177	63	50	54	729
unknown	persons	2	2	2	3			203
	tests	7,553	3,946	2,577	1,916	1,584	1,373	35,863
other (4)	persons							1
	tests	30	44	27	25	28	105	472
perinatal < 18 mos (5)	persons							-
delayed testing (6)	persons							-
	tests	4	7	4		1	2	24
total:	persons	4	4	10	9	1	-	368
	tests	11,017	6,604	4,613	3,515	2,745	2,331	53,728

2000 figures are year-to-date.

TESTS is the number of HIV tests performed, positive and negative, at the Provincial Laboratory.

TOTAL column to far right is cumulative from 1985 to year-to-date 2000.

WSW - women who have sex with women

MSM - men who have sex with men

IDU - injection drug user

visa/employ/insurance - visa/employment/insurance

unspecified PE - unspecified parenteral exposure

blood/BP Recipient - blood or blood product recipient

occupational EXP - occupational exposure

(1), (2), (3), (4), (5), and (6) - refer to FOOTNOTES on page 42

Table 2.9

Persons Testing Newly Positive for HIV by RISK CATEGORY AND YEAR - TOTAL, 1995 to 2000

Risk Category	HIV	1995	1996	1997	1998	1999	2000	TOTAL
MSM or WSW	persons	183	159	149	117	96	129	4,699
	tests	4,657	4,683	4,359	3,972	3,563	3,491	58,786
MSM/IDU or WSW/IDU	persons	30	27	15	7	10	11	205
	tests	272	218	109	64	24	26	1,862
IDU	persons	265	312	223	165	137	117	1,794
	tests	5,389	5,663	3,421	3,202	2,474	2,059	46,588
heterosexual contact	persons	65	84	77	89	88	57	787
	tests	41,944	54,974	55,028	53,597	51,605	49,209	399,174
sex trade worker	persons	2	4	4	1	5	4	39
	tests	346	315	186	211	191	148	3,684
sex trade worker/IDU	persons	43	48	15	18	13	19	232
	tests	342	307	135	66	59	34	3,042
hemophiliac	persons							67
	tests	78	48	84	78	67	67	974
blood/BP recipient (1)	persons	7	3	1	3	3	5	96
	tests	7,401	2,049	2,998	1,122	569	429	32,636
unspecified PE (2)	persons	5						39
	tests	1,403	686	46	207	368	91	10,395
visa/employ/insurance	persons							10
	tests	584	516	591	527	460	456	5,352
occupational EXP (3)	persons	1			1	-	1	3
	tests	941	2,228	4,326	1,890	1,414	2,540	19,380
unknown	persons	81	71	74	69	53	58	2,193
	tests	66,045	65,782	68,394	72,321	74,011	75,798	699,510
other (4)	persons	2	3		8	21	11	64
	tests	899	738	533	403	442	1,120	10,751
perinatal < 18 mos (5)	persons	2	1	2	2	-	-	22
	tests							
delayed testing (6)	persons	4	2	1	2	1	-	10
	tests	37	43	68	41	37	20	323
total:	persons	690	714	561	482	427	413	10,261
	tests	130,338	138,250	140,278	137,701	135,284	135,488	1,292,457

2000 figures are year-to-date.

TESTS is the number of HIV tests performed, positive and negative, at the Provincial Laboratory.

TOTAL column to far right is cumulative from 1985 to year-to-date 2000.

WSW - women who have sex with women

MSM - men who have sex with men

IDU - injection drug user

visa/employ/insurance - visa/employment/insurance

unspecified PE - unspecified parenteral exposure

blood/BP Recipient - blood or blood product recipient

occupational EXP - occupational exposure

(1), (2), (3), (4), (5), and (6) - refer to FOOTNOTES on page 42

Table 2.10

Persons Testing Newly Positive for HIV by ETHNICITY and YEAR - MALES, 1995 to 2000

Ethnicity	HIV	1995	1996	1997	1998	1999	2000	TOTAL
Caucasian	persons	312	334	286	228	205	212	1,577
	tests	11,221	19,480	22,083	22,755	21,729	20,976	118,244
First Nations	persons	52	66	54	35	33	33	273
	tests	1,016	1,505	1,791	1,948	1,880	1,757	9,897
Asian	persons	12	18	16	12	12	20	90
	tests	477	909	1,364	1,858	2,353	1,729	8,690
South Asian	persons	11	11	4	14	8	4	52
	tests	213	244	323	203	193	302	1,478
Inuit	persons			1		1		2
	tests	7	3	7	14	8	11	50
Metis	persons	4	1		4	3		12
	tests	45	75	90	147	159	113	629
Black	persons	9	10	9	15	11	18	72
	tests	163	304	345	335	323	326	1,796
Hispanic	persons	18	14	12	13	11	18	86
	tests	157	259	359	362	385	341	1,863
unknown	persons	112	89	66	56	31	19	373
	tests	31,964	27,199	25,423	23,768	23,671	25,442	157,467
total:	persons	530	543	448	377	315	324	2,537
	tests	45,263	49,978	51,785	51,390	50,701	50,997	300,114

2000 figures are year-to-date.

TESTS is the number of HIV tests performed, positive and negative, at the Provincial Laboratory.

Ethnicity data was collected beginning 1995.

Table 2.11

Persons Testing Newly Positive for HIV by ETHNICITY and YEAR - FEMALES, 1995 to 2000

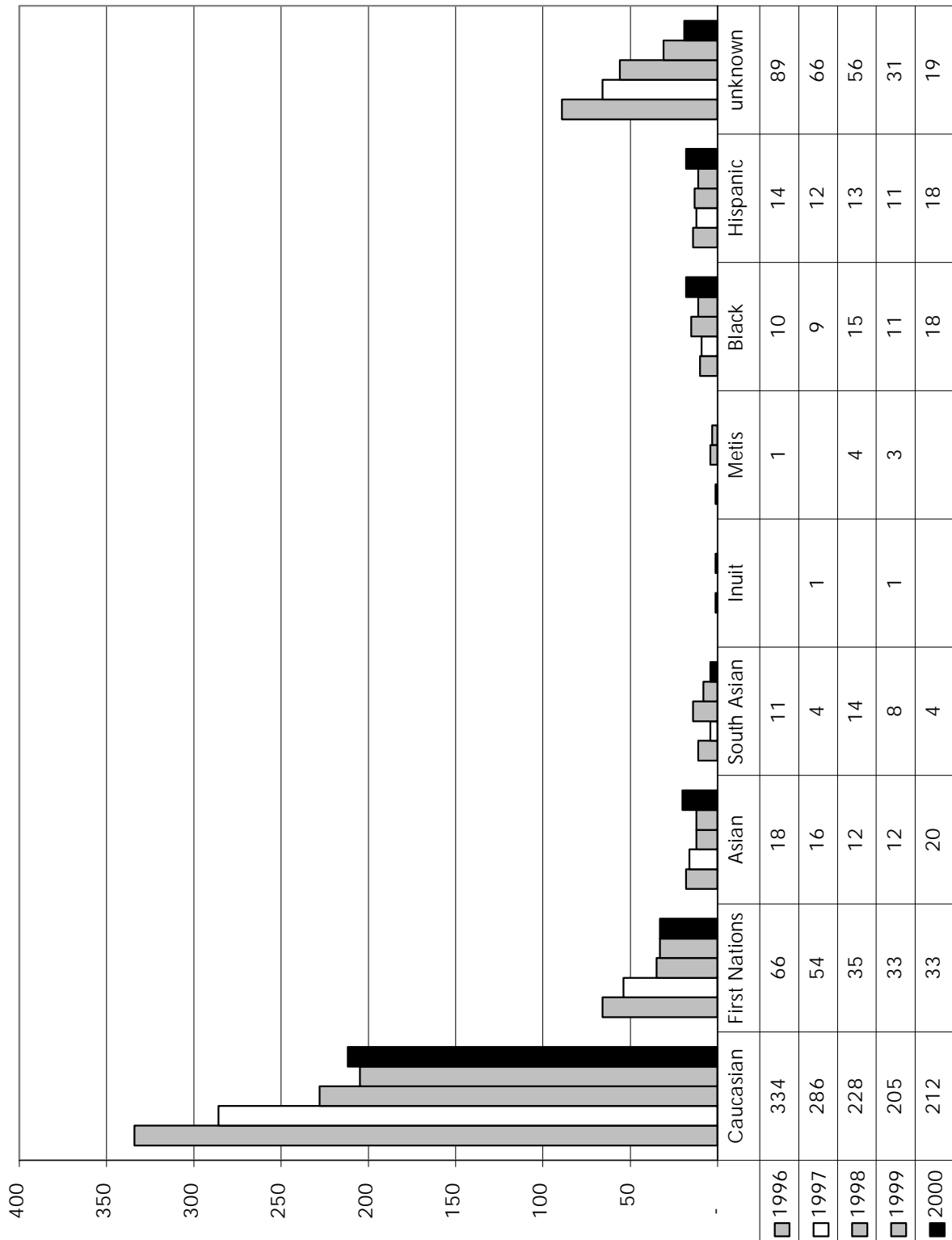
Ethnicity	HIV	1995	1996	1997	1998	1999	2000	TOTAL
Caucasian	persons	75	78	50	42	48	40	333
	tests	13,891	25,274	28,686	29,167	28,387	27,024	152,429
First Nations	persons	33	54	28	30	40	22	207
	tests	1,595	2,765	3,043	3,253	3,338	3,260	17,254
Asian	persons	1	1	1	1	1	6	11
	tests	1,029	2,095	3,400	4,706	5,686	4,158	21,074
South Asian	persons	5		3	5	2	2	17
	tests	338	398	467	335	351	517	2,406
Inuit	persons							-
	tests	11	13	11	18	12	15	80
Metis	persons	1	1	3		2		7
	tests	60	107	105	162	184	123	741
Black	persons	5	7	3	6	8	8	37
	tests	106	205	243	277	258	250	1,339
Hispanic	persons	1	3	1	1	1	2	9
	tests	95	173	218	205	239	267	1,197
unknown	persons	35	23	14	11	9	9	101
	tests	56,933	50,638	47,707	44,673	43,383	46,546	289,880
total:	persons	156	167	103	96	111	89	722
	tests	74,058	81,668	83,880	82,796	81,838	82,160	486,400

2000 figures are year-to-date.

TESTS is the number of HIV tests performed, positive and negative, at the Provincial Laboratory.

Ethnicity data was collected beginning 1995.

Graph 2.5
Persons Testing Newly Positive for HIV by ETHNICITY and YEAR - MALES, 1996 to 2000



Graph 2.6
Persons Testing Newly Positive for HIV by ETHNICITY and YEAR - FEMALES, 1996 to 2000

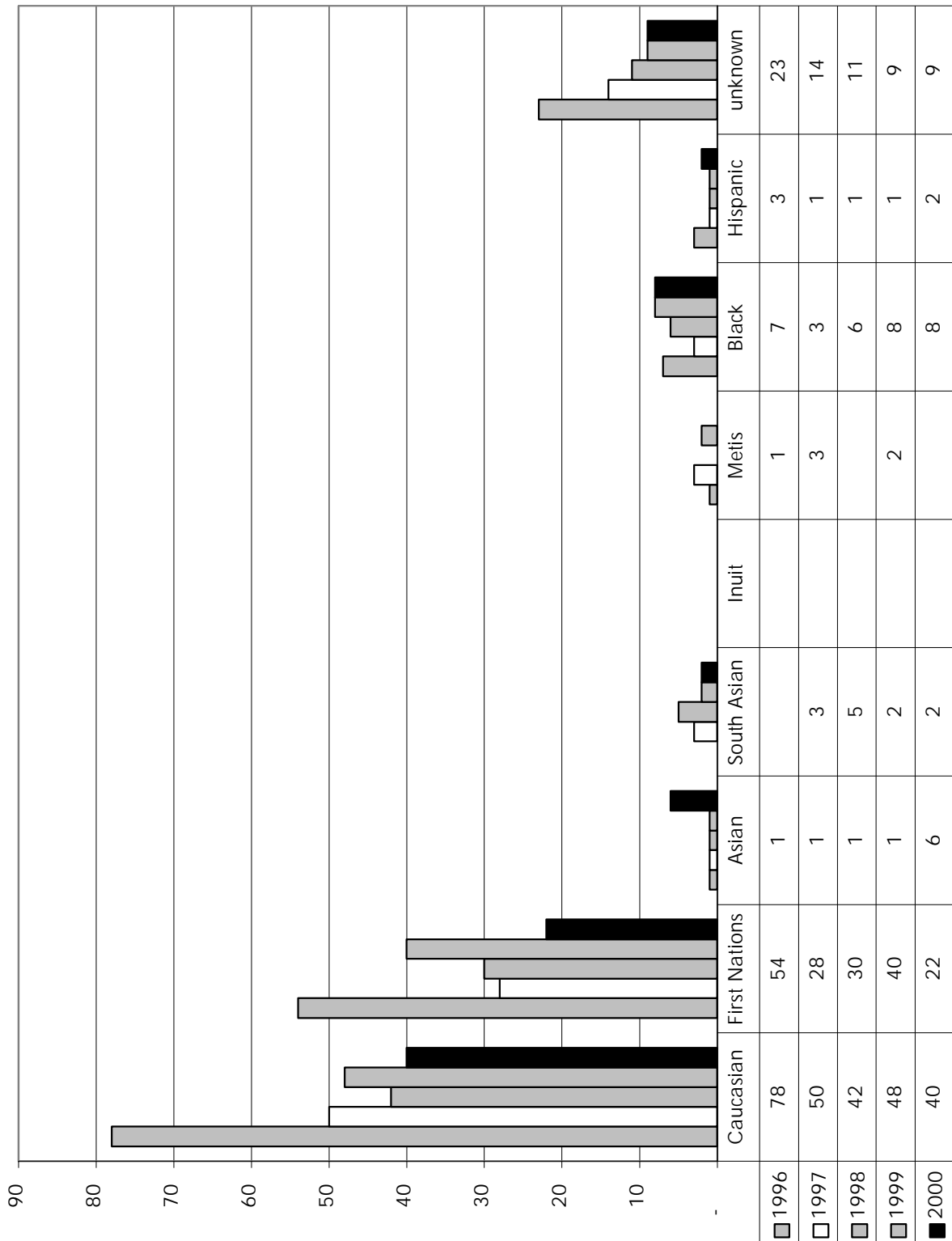


Table 2.12
**Persons Testing Newly Positive for HIV by ETHNICITY and YEAR - GENDER UNKNOWN,
 1995 to 2000**

Ethnicity	HIV	1995	1996	1997	1998	1999	2000	TOTAL
Caucasian	persons	1	1	4	3			9
	tests	1,216	1,145	956	949	662	591	5,519
First Nations	persons	1	1	1	2	1	-	6
	tests	67	91	78	67	76	85	464
Asian	persons							-
	tests	81	60	63	92	56	40	392
South Asian	persons			1				1
	tests	86	18	21	16	8	10	159
Inuit	persons							-
	tests					-		-
Metis	persons							-
	tests	1		3	7	4	3	18
Black	persons				1			1
	tests	13	14	16	16	11	6	76
Hispanic	persons			1				1
	tests	4	5	8	9	3	7	36
unknown	persons	2	2	3	3			10
	tests	9,549	5,271	3,468	2,359	1,925	1,589	24,161
total:	persons	4	4	10	9	1	-	28
	tests	11,017	6,604	4,613	3,515	2,745	2,331	30,825

2000 figures are year-to-date.

TESTS is the number of HIV tests performed, positive and negative, at the Provincial Laboratory.

Ethnicity data was collected beginning in 1995.

Table 2.13

Persons Testing Newly Positive for HIV by ETHNICITY and YEAR - TOTAL, 1995 to 2000

Ethnicity	HIV	1995	1996	1997	1998	1999	2000	TOTAL
Caucasian	persons	388	413	340	273	253	252	1,919
	tests	26,328	45,899	51,725	52,871	50,778	48,591	276,192
First Nations	persons	86	121	83	67	74	55	486
	tests	2,678	4,361	4,912	5,268	5,294	5,102	27,615
Asian	persons	13	19	17	13	13	26	101
	tests	1,587	3,064	4,827	6,656	8,095	5,927	30,156
South Asian	persons	16	11	8	19	10	6	70
	tests	637	660	811	554	552	829	4,043
Inuit	persons	-	-	1	-	1	-	2
	tests	18	16	18	32	20	26	130
Metis	persons	5	2	3	4	5	-	19
	tests	106	182	198	316	347	239	1,388
Black	persons	14	17	12	22	19	26	110
	tests	282	523	604	628	592	582	3,211
Hispanic	persons	19	17	14	14	12	20	96
	tests	256	437	585	576	627	615	3,096
unknown	persons	149	114	83	70	40	28	484
	tests	98,446	83,108	76,598	70,800	68,979	73,577	471,508
total:	persons	690	714	561	482	427	413	3,287
	tests	130,338	138,250	140,278	137,701	135,284	135,488	817,339

2000 figures are year-to-date.

TESTS is the number of HIV tests performed, positive and negative, at the Provincial Laboratory.

Ethnicity data was collected beginning in 1995.

Table 2.14
Persons Testing Newly Positive for HIV by HEALTH REGION* and YEAR, 1995 to 2000

Health Region	HIV	1995	1996	1997	1998	1999	2000	TOTAL
Burnaby	persons	13	19	17	9	8	15	174
	rate	7.11	10.16	9.00	4.75	4.17	7.80	
	tests	5,585	5,733	5,808	5,680	6,285		45,718
Capital	persons	34	36	24	28	16	27	409
	rate	10.34	10.85	7.17	8.35	4.77	8.06	
	tests	11,633	11,934	12,148	14,004	11,363	11,365	106,655
Cariboo	persons	2	3	2	1		2	20
	rate	2.82	4.09	2.64	1.30		2.59	
	tests	1,627	1,738	1,979	1,901	1,861	1,729	14,458
Central Fraser Valley	persons							81
	rate							
	tests							12,122
Central Vancouver Island	persons	13	14	19	10	12	13	160
	rate	5.68	6.00	7.94	4.13	4.92	5.30	
	tests	6,634	6,948	7,347	7,094	6,925	6,917	58,699
Coast Garibaldi	persons	1	7	5	3	3	2	47
	rate	1.41	9.55	6.55	3.83	3.76	2.49	
	tests	2,009	2,462	2,416	2,384	2,293	2,227	18,905
East Kootenay	persons	4	2	2	1	3	1	18
	rate	5.17	2.53	2.49	1.23	3.70	1.21	
	tests	1,204	1,360	1,551	1,393	1,400	1,286	10,696
Fraser Valley	persons	21	17	14	17	8	22	152
	rate	9.35	7.35	5.93	7.11	3.31	9.05	
	tests	6,029	6,322	7,634	7,574	7,404	7,286	56,052
Kootenay Boundary	persons	2	10	2	1	1	1	34
	rate	2.49	12.25	2.43	1.21	1.22	1.21	
	tests	1,855	1,861	2,011	1,860	1,755	1,792	15,542
North Okanagan	persons	2	4	4	4	1	5	37
	rate	1.80	3.51	3.43	3.39	0.84	4.19	
	tests	2,392	2,639	2,848	2,772	2,658	2,619	21,259
North Shore	persons	13	13	8	11	8	6	149
	rate	7.48	7.35	4.48	6.11	4.42	3.33	
	tests	5,013	4,847	5,157	5,216	4,875	4,875	47,108
North West	persons	3	2	1	2	2	1	29
	rate	3.39	2.22	1.09	2.18	2.19	1.09	
	tests	2,250	2,561	2,938	2,647	2,505	2,381	21,048

2000 figures are year-to-date.

TESTS is the number of HIV tests performed, positive and negative, at the Provincial Laboratory.

RATE is per 100,000 population.

TOTAL column to far right is cumulative from 1989 to year-to-date 2000.

CENTRAL FRASER VALLEY: As of 1995, any HIV positive test reports that fall within the areas previously served by the Central Fraser Valley Health Unit will now be designated to the following health jurisdictions: Mission to Fraser Valley; Maple Ridge and Pitt Meadows to Simon Fraser; and Langley to South Fraser.

*HEALTH REGION - An HIV positive test report is designated to the appropriate HEALTH REGION according to the location of the physician/clinic site where the person tested.

Table 2.14 (continued)

Persons Testing Newly Positive for HIV by HEALTH REGION* and YEAR, 1995 to 2000

Health Region	HIV	1995	1996	1997	1998	1999	2000	TOTAL
Northern Interior	persons	5	2	4	2	4	3	55
	rate	3.95	1.55	3.03	1.50	3.00	2.24	
	tests	3,989	4,034	4,099	3,981	3,700	3,957	36,984
Okanagan Similkameen	persons	14	12	6	11	6	13	122
	rate	6.48	5.44	2.65	4.78	2.60	5.58	
	tests	5,436	5,830	5,647	5,616	5,619	5,595	47,818
Peace Liard	persons		2	1			2	11
	rate		3.09	1.53			3.02	
	tests	1,630	1,723	1,757	1,732	1,606	1,651	13,025
Richmond	persons	8	8	5	7			77
	rate	5.36	5.16	3.15	4.31			
	tests	3,363	3,631	3,613	3,428	3,613		26,162
Simon Fraser	persons	56	40	36	22	20	30	322
	rate	19.21	13.22	11.63	6.97	6.21	9.22	
	tests	8,918	9,742	9,967	10,154	10,053	16,717	86,432
South Fraser	persons	29	41	51	31	22	19	303
	rate	5.50	7.55	9.18	5.49	3.82	3.30	
	tests	11,682	12,546	15,505	15,565	15,185	15,492	109,312
Thompson	persons	4	5	4	10	2	6	62
	rate	3.16	3.83	3.00	7.38	1.46	4.36	
	tests	3,467	4,017	4,145	4,095	4,138	4,127	32,996
Upper Island	persons	5	8	2	4	2	3	45
	rate	4.32	6.75	1.65	3.26	1.63	2.44	
	tests	3,709	3,950	3,983	3,910	3,486	3,296	31,757
Vancouver	persons	461	469	352	307	308	242	5,366
	rate	86.84	85.86	63.30	54.45	53.96	42.03	
	tests	39,373	41,087	37,542	36,356	34,430	38,026	385,703
unknown	persons			2	1	1		23
	tests	2,540	3,285	2,183	339	4,130	4,150	22,667
total:	persons	690	714	561	482	427	413	7,696
	rate	18.23	18.39	14.17	12.02	10.55	10.15	
	tests	130,338	138,250	140,278	137,701	135,284	135,488	1,221,118

2000 figures are year-to-date.

TESTS is the number of HIV tests performed, positive and negative, at the Provincial Laboratory.

RATE is per 100,000 population.

TOTAL column to far right is cumulative from 1989 to year-to-date 2000.

*HEALTH REGION - An HIV positive test report is designated to the appropriate HEALTH REGION according to the location of the physician/clinic site where the person tested.

Table 2.15

Persons Testing Newly Positive for HIV by SPECIMEN SOURCE and YEAR, 1995 to 2000

Specimen Source	HIV	1995	1996	1997	1998	1999	2000	TOTAL
private physician	persons	437	393	335	284	233	256	4,727
	tests	103,590	109,830	109,244	104,029	102,851	105,750	947,413
hospital	persons	129	110	73	58	52	84	1,416
	tests	16,520	17,612	19,147	21,069	21,407	20,728	166,984
STD/A TEC Clinic (7)	persons	26	22	21	15	21	8	314
	tests	3,192	3,066	3,164	3,024	2,950	3,504	33,556
STD/AIDS Outreach (8)	persons	90	82	57	49	47	44	770
	tests	2,771	3,023	3,101	3,358	3,135	2,478	30,225
health unit	persons	8	13	13	14	4	1	150
	tests	4,255	4,712	5,557	6,110	4,919	3,004	42,499
Red Cross referral	persons							7
	tests	1	1					88
unknown	persons					2	1	7
	tests	9	6	65	111	22	24	353
VIDUS study (9)	persons		69	32	16	18	13	148
downtown clinics (10)	persons		25	30	21	36	2	114
corrections (11)	persons				25	14	4	43
total:	persons	690	714	561	482	427	413	7,696
	tests	130,338	138,250	140,278	137,701	135,284	135,488	1,221,118

2000 figures are year-to-date .

TESTS is the number of HIV tests performed, positive and negative, at the Provincial Laboratory.

TOTAL column to far right is cumulative from 1989 to year-to-date 2000.

Any positive test result for HIV from the UBC Virology Laboratory or the BC Biomedical Ltd. is referred to the Provincial Laboratory at the BC Centre for Disease Control Society for confirmatory testing

Specimen Source	HIV	1994	1995	1996	1997	1998	1999	TOTAL
UBC Virology Laboratory (12)	tests	2,789	2,916	3,956	3,846	3,413	3,396	30,094
BC Biomedical Ltd. (13)	tests	1,441	1,654	1,694	1,371	1,152	1,241	15,224
total:	tests	4,230	4,570	5,650	5,217	4,565	4,637	45,318

TESTS is the number of HIV tests performed, positive and negative, at the Provincial Laboratory.

TOTAL column to far right is cumulative from 1989 to year end 1999.

VIDUS Study - Vancouver Injection Drug User Study

UBC Virology Laboratory - University of British Columbia Virology Laboratory

(7), (8), (9), (10), (11), (12), and (13) - refer to FOOTNOTES on page 42

Perinatal Transmission of HIV

Since HIV antibody status is not diagnostic prior to 18 months of age, HIV infections documented in this age group are confirmed through direct identification of HIV by PCR, p24 antigen testing and/or HIV culture on two or more consecutive assays.

Table 2.16 has been produced to more accurately indicate the number of perinatal HIV infections in British Columbia. The first row (maternal AB) indicates those <18 months of age with maternal antibodies for HIV whereas the second row (true infection) indicates those <18 months of age with true HIV infections.

Table 2.16

Maternal Antibody Positive for HIV vs True HIV Infection - <18 MONTHS OF AGE, 1992 to 2000

HIV	1992	1993	1994	1995	1996	1997	1998	1999	2000	TOTAL
maternal AB	10	15	17	24	19	17	16	21		161
true infection	2	4	5	2	1	2	2	-		22

maternal AB - maternal antibody

TOTAL column to far right is cumulative from 1989 to year-to-date 2000.

Since pregnancy is not an HIV risk category, a separate table (Table 2.17) has been prepared to monitor the number of pregnant women whose HIV test requisition stated that the test was being done as a prenatal assessment and of these women, the number who have tested positive for HIV. This does not include pregnant women tested for HIV whose requisition indicated a different risk or reason for testing, e.g. injection drug user.

Please note that the pregnant women who have tested positive for HIV are included in Table 2.7 - Persons Testing Newly Positive for HIV by Risk Category in accordance to their risk (e.g. heterosexual contact).

Table 2.17

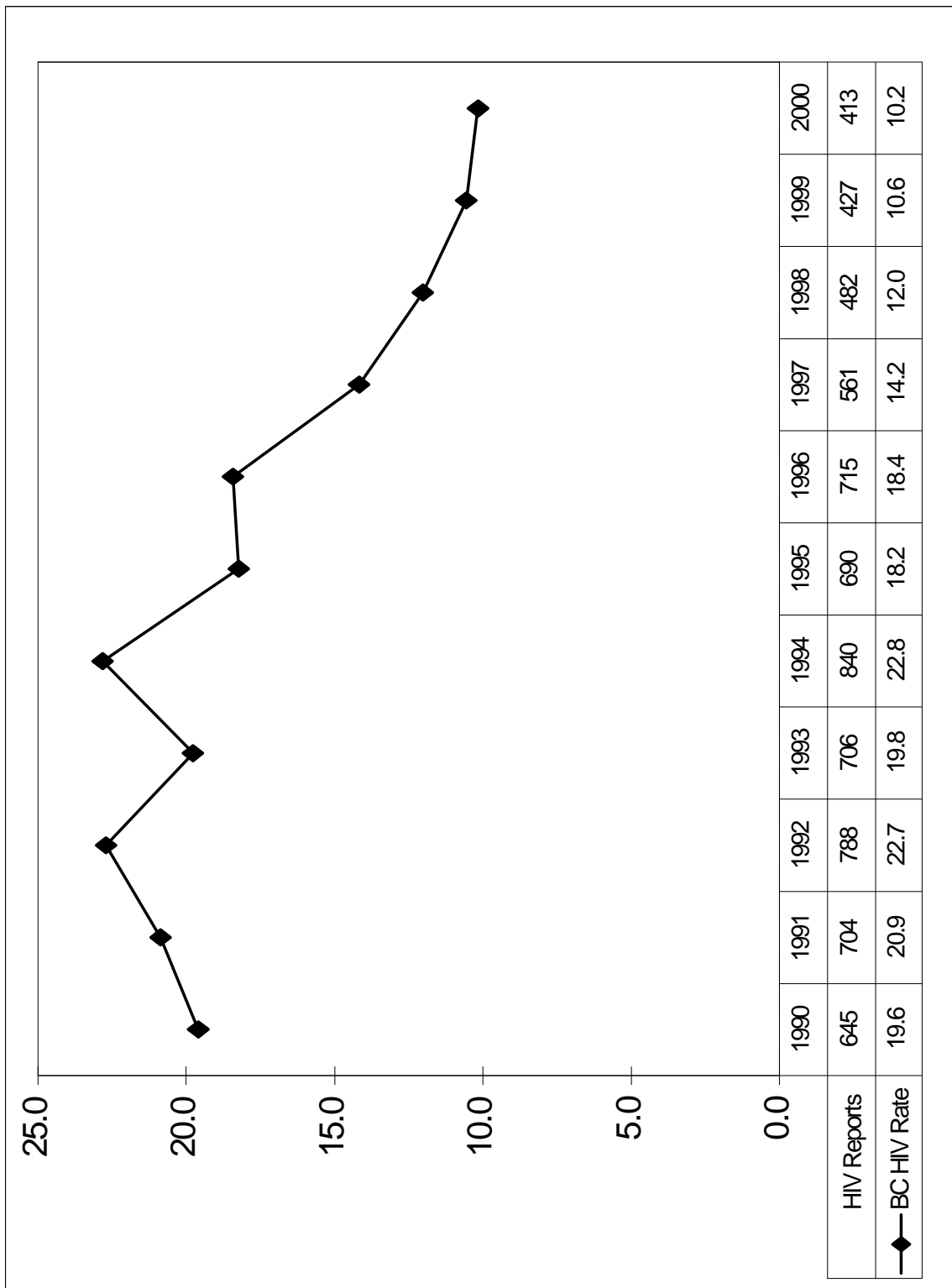
Women Testing Newly Positive for HIV - PRENATAL SCREENING, 1995 to 2000

Gender	HIV	1995	1996	1997	1998	1999	2000	TOTAL
male	persons				1			1
	tests	105	381	489	443	609	732	2,759
female	persons	14	11	5	7	3	4	44
	tests	15,690	21,642	23,662	23,509	23,567	23,408	131,580
unknown	persons							-
	tests	1,527	1,093	686	581	440	354	4,681
total:	persons	14	11	5	8	3	4	45
	tests	17,322	23,116	24,837	24,533	24,616	24,494	139,020

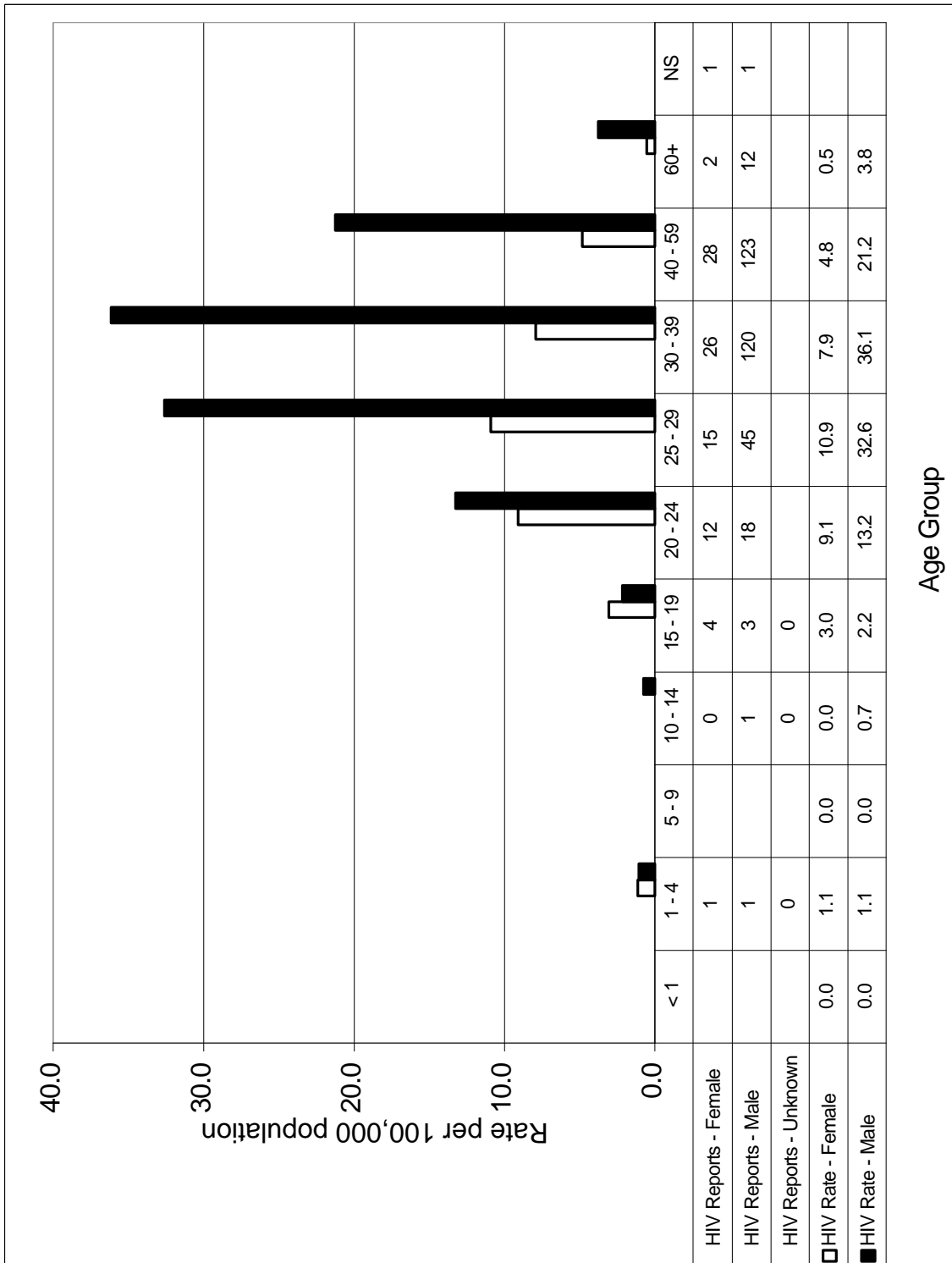
2000 figures are year-to-date.

Graph 2.7
Persons Testing Newly Positive for HIV by YEAR for BC, 1990 to 2000

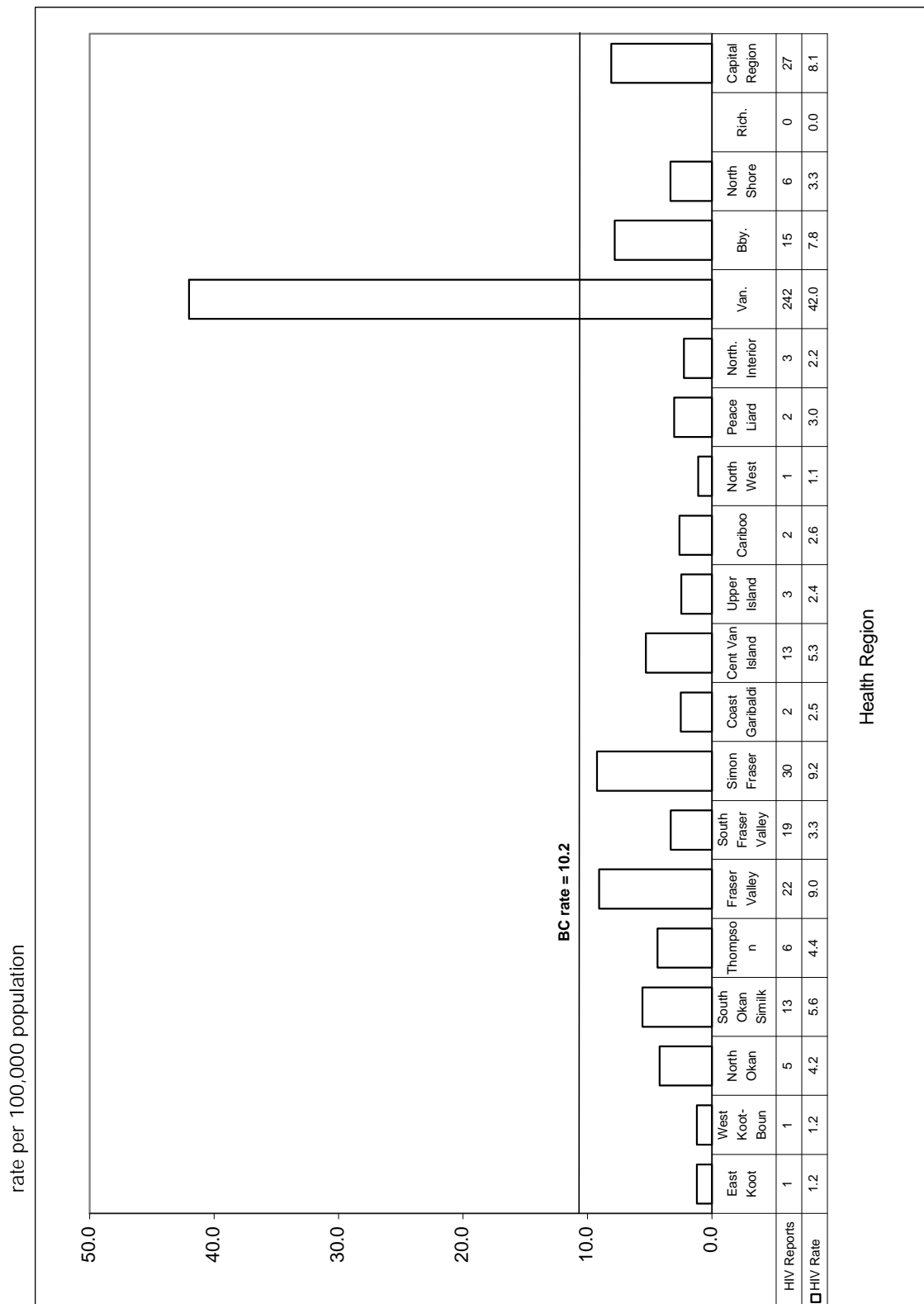
rate per 100,000 population



Graph 2.8
Persons Testing Newly Positive for HIV by AGE and GENDER, 2000



Graph 2.9
Persons Testing Newly Positive for HIV by HEALTH REGION, 2000



HIV FOOTNOTES

No.	Risk Category	Footnote
(1)	blood/BP recipient	Follow-up is <u>not</u> done for each person testing newly positive for HIV in this risk category. Persons in this risk category are self-identified.
(2)	unspecified PE	Initially used on the requisition form to include IDU, blood/BP recipients, hospital incidents, and all other parenteral exposures. Unspecified PE was eliminated from the revised requisition form in August 1987, however, original requisitions continue to be received.
(3)	occupational EXP	Follow-up <u>is</u> done on each positive HIV test in this risk category to determine if the person's positive test is the result of a <u>true</u> occupational exposure.
(4)	other	Includes the following: endemic area immigrants; semen recipients; persons who frequent sex trade workers; and organ donors.
(5)	perinatal < 18 mos	Since HIV antibody testing is not diagnostic prior to 18 months of age, HIV infections documented in this age group were confirmed through direct detection of HIV on two or more consecutive assays by PCR, p24 antigen testing and/or HIV culture.
(6)	delayed testing	A child infected through perinatal transmission who has not been previously identified prior to the age of 18 months by a direct detection method for HIV. This risk category was included in 1996.

No.	Specimen Source	Footnote
(7)	STD/A TEC Clinic	Both the STD and ATEC Clinic are located at 655 West 12 th Avenue in Vancouver.
(8)	STD/AIDS Outreach	HIV testing is done at various sites in the Lower Mainland (e.g. jails, outreach clinics, detoxification centres) by outreach nurses from the AIDS Prevention Street Nurse Program.
(9)	VIDUS Study	To address the outbreak of HIV among IDUs, the BC Centre for Excellence in HIV/AIDS and the BC Centre for Disease Control Society initiated the VIDUS Study (an open cohort study) to investigate the determinants of HIV transmission and the progression of HIV in this client population.
(10)	downtown clinics	The downtown clinics provide medical, dental, pharmaceutical, nutritional, and other health care services to residents of Vancouver's Downtown Eastside.
(11)	corrections	Many inmates choose to get an HIV test done at the time of intake or when they perceive that they have been at risk of acquiring HIV.
(12)	UBC Virology Laboratory	UBC performs routine HIV antibody ELISA tests. Positive ELISA screens are always confirmed with Western Blots at the Provincial Laboratory.