

HIV/AIDS ANNUAL REPORT

2007

British Columbia Centre for Disease Control
STI/HIV Prevention and Control

prepared by

Devon Haag, MSc, Surveillance Analyst
Paul Kim, BSc, Surveillance Analyst
Elsie Wong, BSN, MBA, Federal Field Surveillance Officer
Daphne Spencer, RN, HIVSS
Mark Gilbert, MD, MHSc, FRCPC, Physician Epidemiologist
Michael L. Rekart, MD, DTM&H, MHSc, FRCPC, Director

September 2008

TABLE OF CONTENTS

Page

AIDS IN BRITISH COLUMBIA	1
---------------------------------------	---

AIDS Case Reports by:

Table 1.1	Year of Diagnosis, 1983 to 2007	2
Graph 1.1	Year of Diagnosis, 1994 to 2007	2
Table 1.2	Age and Year of Diagnosis – Males , 2001 to 2007	3
Table 1.3	Age and Year of Diagnosis – Females , 2001 to 2007	3
Table 1.4	Age and Year of Diagnosis – Total , 2001 to 2007	4
Table 1.5	Age and Gender – Cumulative , 1983 to 2007	4
Graph 1.2	Gender and Year of Diagnosis, 1994 to 2007	5
Graph 1.3	Age and Year of Diagnosis, 1994 to 2007	5
Table 1.6	Risk Category, Gender and Year of Diagnosis, 2001 to 2007	6
Table 1.7	Risk Category and Gender – Cumulative , 1983 to 2007	6
Graph 1.4	Risk Category and Year of Diagnosis, 1994 to 2007	7
Table 1.8	Ethnicity, Gender and Year of Diagnosis, 2001 to 2007	8
Table 1.9	Ethnicity and Gender – Cumulative , 1983 to 2007	9
Table 1.10	Health Service Delivery Area and Year of Diagnosis, 2001 to 2007	10
Table 1.11	Health Service Delivery Area – Cumulative , 1983 to 2007	11
Table 1.12	First Disease Indicative of AIDS and Year of Diagnosis, 1983 to 2007	12

HIV IN BRITISH COLUMBIA	13
--------------------------------------	----

Persons Testing Newly Positive for HIV by:

Table 2.1	Year of Testing, 1985 to 2007	15
Graph 2.1	Year of Testing, 1994 to 2007	16
Graph 2.2	Gender and Year of Testing, 1994 to 2007	16
Table 2.2	Age and Year of Testing – Males , 2001 to 2007	17
Table 2.3	Age and Year of Testing – Females , 2001 to 2007	18
Table 2.4	Age and Year of Testing – Gender Unknown , 2001 to 2007	19
Table 2.5	Age and Year of Testing – Total , 2001 to 2007	20
Table 2.6	Age and Gender – Cumulative , 1985 to 2007	20
Graph 2.3	Age and Year of Testing, 1994 to 2007	21
Table 2.7	Risk Category and Year of Testing – Males , 2001 to 2007	22
Table 2.8	Risk Category and Year of Testing – Females , 2001 to 2007	23
Table 2.9	Risk Category and Year of Testing – Gender Unknown , 2001 to 2007	24
Table 2.10	Risk Category and Year of Testing – Total , 2001 to 2007	25
Table 2.11	Risk Category and Gender – Cumulative , 1985 to 2007	26
Graph 2.4	Risk Category and Year of Testing, 1994 to 2007	26
Table 2.12	Prenatal Screening, 2001 to 2007	27
Table 2.13	Ethnicity and Year of Testing – Males , 2001 to 2007	28
Table 2.14	Ethnicity and Year of Testing – Females , 2001 to 2007	28
Table 2.15	Ethnicity and Year of Testing – Gender Unknown , 2001 to 2007	28
Table 2.16	Ethnicity and Year of Testing – Total , 2001 to 2007	29
Table 2.17	Ethnicity and Gender – Cumulative , 1995 to 2007	29
Table 2.18	Health Service Delivery Area and Year of Testing, 2001 to 2007	30
Table 2.19	Health Service Delivery Area – Cumulative , 1995 to 2007	31
Table 2.20	Specimen Source and Year of Testing, 2001 to 2007	32
Table 2.21	Specimen Source – Cumulative , 1989 to 2007	32

HIV FOOTNOTES	33
----------------------------	----

AIDS IN BRITISH COLUMBIA

Historically, collection of BC AIDS data has proven challenging as AIDS Case Report forms are not always be submitted when a healthcare provider diagnoses a client with AIDS.

Prior to 1997, AIDS case reports were compiled courtesy of the Vancouver Health Department. From 1997 – 2000, to avoid duplicate data entry and to improve timeliness of reporting, the BCCDC Division of STI/HIV Prevention and Control collaborated with the Division of HIV/AIDS Surveillance, Bureau of HIV/AIDS and STD, Laboratory Centre for Disease Control, Health Protection Branch Health Canada.

From 2000 onward, AIDS case reports have been compiled by the BCCDC Division of STI/HIV Prevention and Control in collaboration with the BC Center for Excellence in HIV/AIDS.

Any potential discrepancies between reports from the semi-annual 2000 onward and previous AIDS Update reports may be attributed to the transition from the use of Health Canada's AIDS data to the use of BC AIDS data.

Since HIV became a reportable disease in BC in 2003, all new cases are reported to the BCCDC Division of STI/HIV Prevention and Control and followed up by Regional Health Authority Public Health staff. If an AIDS diagnosis is made at the time of the first positive HIV test, this diagnosis is reported to BCCDC. Healthcare providers, when making a diagnosis of AIDS, are to complete an AIDS Case Report form and submit it to the BCCDC at the address provided below. In 2007, a revised AIDS Case Report form was posted under the CD Surveillance Forms section of the BCCDC website (<http://www.bccdc.org/download.php?item=3373>) to help facilitate the reporting process.

Detailed pre-2000 statistics are not provided in this report due to page limitations but are available upon request. Please forward your request to the STI/HIV Resource Centre either by:

Telephone: 604-660-2090
Fax: 604-775-0808
E-mail: stdinfo@bccdc.ca

Mail: BC Centre for Disease Control
STI/HIV Prevention and Control
655 West 12th Avenue
Vancouver, BC, V5Z 4R4

Acknowledgements:

Physicians, healthcare providers, and public health staff in British Columbia for taking the time and effort to complete and submit their AIDS case report forms.

Dr. Robert Hogg and Ms. Benita Yip from the BC Centre for Excellence in HIV/AIDS for their continued assistance in the reporting of new AIDS cases.

Table 1.1
AIDS Case Reports by YEAR OF DIAGNOSIS, 1983 to 2007

Year of Diagnosis	Cases	Rate	Cumulative Cases
1983	7	0.2	7
1984	29	1.0	36
1985	62	2.1	98
1986	106	3.5	204
1987	134	4.4	338
1988	175	5.6	513
1989	223	7.0	736
1990	224	6.8	960
1991	265	7.9	1,225
1992	322	9.3	1,547
1993	357	10.0	1,904
1994	357	9.7	2,261
1995	337	8.9	2,598
1996	269	6.9	2,867
1997	158	4.0	3,025
1998	171	4.3	3,196
1999	160	4.0	3,356
2000	152	3.8	3,508
2001	87	2.1	3,595
2002	106	2.6	3,701
2003	114	2.7	3,815
2004	100	2.4	3,915
2005	109	2.6	4,024
2006	84	1.9	4,108
2007	61	1.4	4,169
TOTAL	4,169		

RATE is per 100,000 population.

Graph 1.1
AIDS Case Reports in BC by YEAR OF DIAGNOSIS, 1994 to 2007

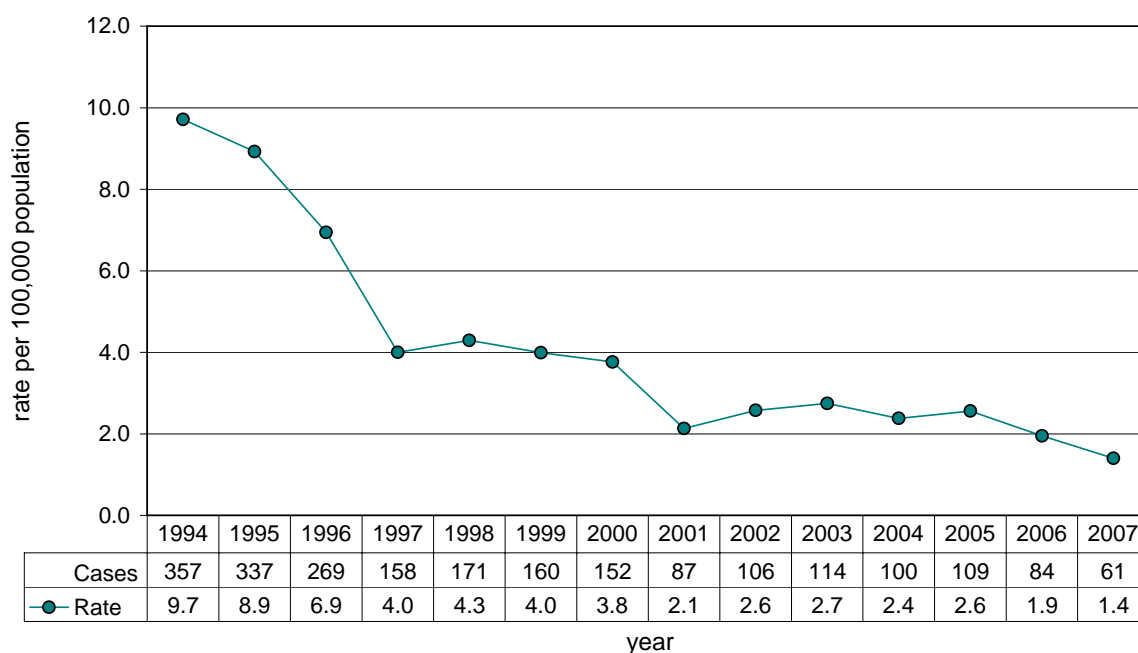


Table 1.2
AIDS Case Reports by AGE and YEAR OF DIAGNOSIS – MALES, 2001 to 2007

Age	AIDS	2001	2002	2003	2004	2005	2006	2007	TOTAL
<15	cases	2	-	-	-	-	1	-	3
	rate	0.5					0.3		
15 to 19	cases	-	-	-	-	-	-	-	-
	rate								
20 to 29	cases	5	4	8	6	4	5	-	32
	rate	1.8	1.5	2.8	2.1	1.4	1.7		
30 to 39	cases	26	33	40	25	18	15	19	176
	rate	8.1	10.5	13.0	8.3	6.0	5.0	6.3	
40 to 49	cases	21	29	23	32	40	28	25	198
	rate	6.3	8.6	6.7	9.2	11.4	8.0	7.1	
50+	cases	24	27	27	22	26	19	11	156
	rate	4.1	4.5	4.4	3.4	3.9	2.8	1.6	
total	cases	78	93	98	85	88	68	55	565
	rate	3.9	4.6	4.8	4.1	4.2	3.2	2.5	

RATE is per 100,000 population.

TOTAL column to the far right is cumulative from **2001 to 2007** December 31.

Table 1.3
AIDS Case Reports by AGE and YEAR OF DIAGNOSIS – FEMALES, 2001 to 2007

Age	AIDS	2001	2002	2003	2004	2005	2006	2007	TOTAL
<15	cases	-	1	-	-	-	-	-	1
	rate		0.3						
15 to 19	cases	-	-	1	-	-	-	-	1
	rate			0.7					
20 to 29	cases	4	3	2	3	-	3	1	16
	rate	1.5	1.1	0.7	1.1		1.0	0.3	
30 to 39	cases	5	3	3	4	7	5	2	29
	rate	1.5	0.9	1.0	1.3	2.3	1.6	0.7	
40 to 49	cases	-	6	5	7	10	5	1	34
	rate		1.7	1.4	2.0	2.8	1.4	0.3	
50+	cases	-	-	5	1	4	3	2	15
	rate			0.7	0.1	0.6	0.4	0.3	
total	cases	9	13	16	15	21	16	6	96
	rate	0.4	0.6	0.8	0.7	1.0	0.7	0.3	

RATE is per 100,000 population.

TOTAL column to the far right is cumulative from **2001 to 2007** December 31.

Table 1.4
AIDS Case Reports by AGE and YEAR OF DIAGNOSIS – TOTAL, 2001 to 2007

Age	AIDS	2001	2002	2003	2004	2005	2006	2007	TOTAL
<15	cases	2	1	-	-	-	1	-	4
	rate	0.3	0.1				0.1		
15 to 19	cases	-	-	1	-	-	-	-	1
	rate			0.4					
20 to 29	cases	9	7	10	9	4	8	1	48
	rate	1.7	1.3	1.8	1.6	0.7	1.4	0.2	
30 to 39	cases	31	36	43	29	25	20	21	205
	rate	4.8	5.7	6.9	4.8	4.1	3.3	3.5	
40 to 49	cases	21	35	28	39	50	33	26	232
	rate	3.1	5.1	4.0	5.6	7.1	4.7	3.7	
50+	cases	24	27	32	23	30	22	13	171
	rate	2.0	2.1	2.5	1.7	2.2	1.5	0.9	
total*	cases	87	106	114	100	109	84	61	661
	rate	2.1	2.6	2.7	2.4	2.6	1.9	1.4	

total* - Includes transgendered persons.

RATE is per 100,000 population.

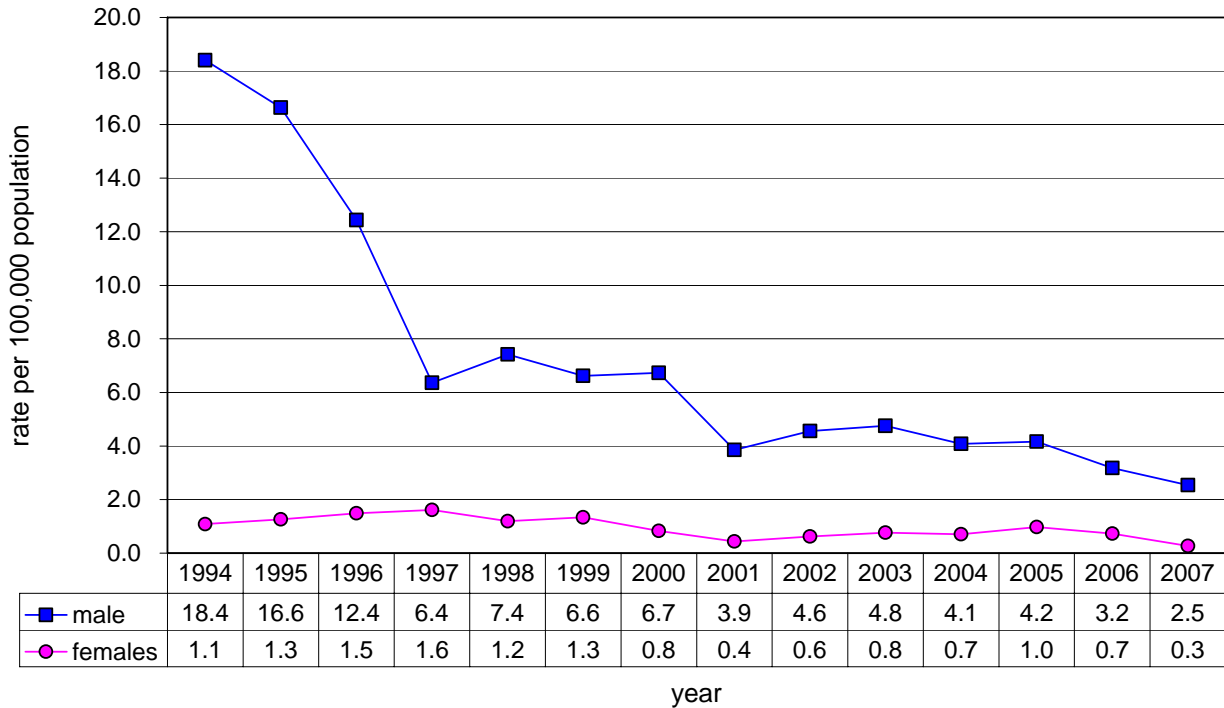
TOTAL column to the far right is cumulative from 2001 to 2007 December 31.

Table 1.5
Total AIDS Case Reports by AGE and GENDER – CUMULATIVE 1983 to 2007

Age	Males	Females	TOTAL*
<15	15	10	25
15 to 19	10	3	13
20 to 29	455	67	522
30 to 39	1,648	133	1,783
40 to 49	1,186	86	1,272
50+	522	32	554
total	3,836	331	4,169

TOTAL* column to the far right is cumulative from 1983 to 2007 December 31, and includes transgendered persons.

Graph 1.2
AIDS Case Reports in BC by GENDER and YEAR OF DIAGNOSIS,
1994 to 2007



Graph 1.3
AIDS Case Reports in BC by AGE and YEAR OF DIAGNOSIS,
1994 to 2007

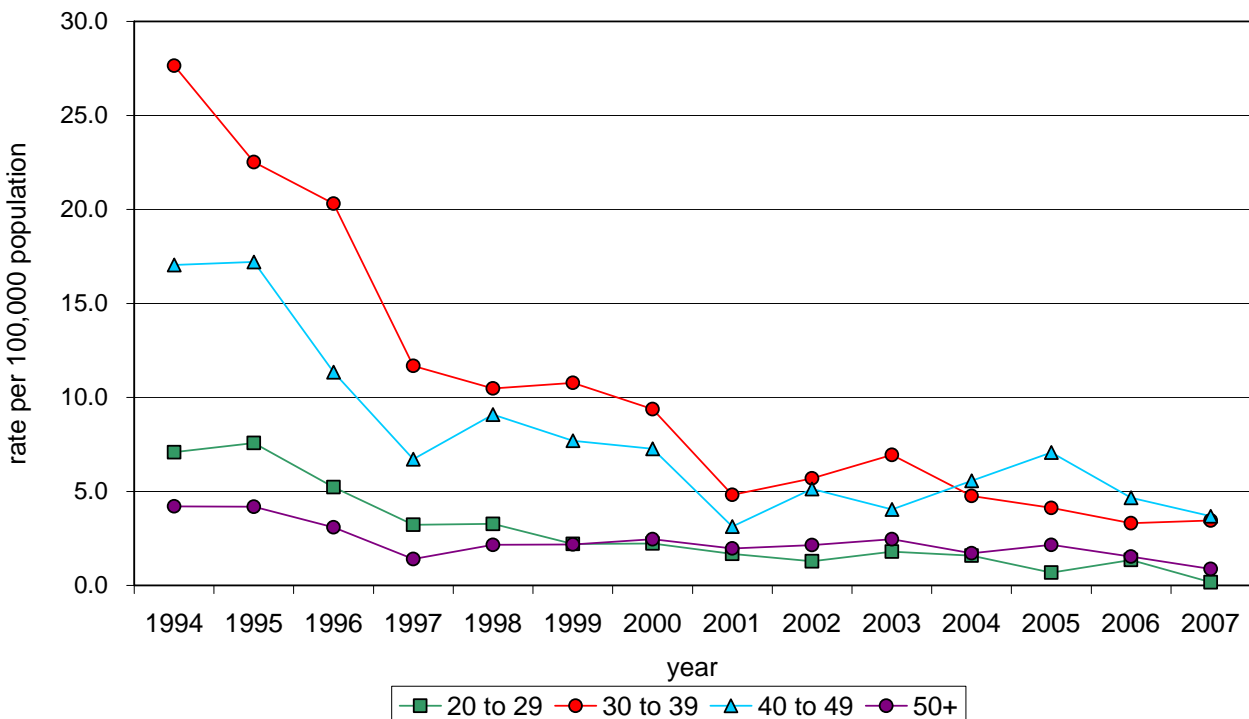


Table 1.6
AIDS Case Reports by RISK CATEGORY, GENDER and YEAR OF DIAGNOSIS, 2001 to 2007

Risk Category	AIDS	2001	2002	2003	2004	2005	2006	2007	TOTAL
MSM	total	30	27	11	14	21	7	12	122
MSM/IDU	total	3	3	2	2	2	-	-	12
IDU	males	12	18	23	19	18	19	14	123
	females	3	5	5	7	10	7	2	39
	total	15	23	28	26	28	26	16	162
heterosexual contact	males	3	6	5	11	13	8	8	54
	females	3	2	5	2	4	1	1	18
	total	6	8	10	13	17	9	9	72
hemophiliac	males	1	-	-	-	-	-	-	1
	females	-	-	-	-	-	-	-	-
	total	1	-	-	-	-	-	-	1
blood/BP recipient	males	1	1	-	-	-	-	-	2
	females	-	-	1	1	-	-	-	2
	total	1	1	1	1	-	-	-	4
perinatal	males	1	-	-	-	-	-	-	1
	females	-	-	-	-	-	-	-	-
	total	1	-	-	-	-	-	-	1
occupational exposure	males	-	1	-	-	-	-	-	1
	females	-	-	-	-	-	-	-	-
	total	-	1	-	-	-	-	-	1
unknown	males	27	37	57	39	34	34	21	249
	females	3	6	5	5	7	8	3	37
	total	30	43	62	44	41	42	24	286
total*	males	78	93	98	85	88	68	55	565
	females	9	13	16	15	21	16	6	96
	total	87	106	114	100	109	84	61	661

total* - Includes transgendered persons.

TOTAL column to the far right is cumulative from **2001 to 2007** December 31.

MSM – men who have sex with men

IDU – injection drug user

HET – heterosexual contact

blood/BP recipient – blood or blood product recipient

Table 1.7
Total AIDS Case Reports by RISK CATEGORY and GENDER - CUMULATIVE 1983 to 2007

Risk Category	Males	Females	TOTAL*
MSM	2,585	-	2,585
MSM/IDU	176	-	176
IDU	386	144	530
heterosexual contact	187	102	289
hemophiliac	26	1	27
blood/RP recipient	22	15	37
perinatal	9	5	14
occupational exposure	2	-	2
unknown	443	64	507
total	3,836	331	4,169

TOTAL* column to the far right is cumulative from **1983 to 2007** December 31, and includes transgendered persons.

Graph 1.4
AIDS Case Reports in BC by RISK CATEGORY and YEAR OF DIAGNOSIS,
1994 to 2007

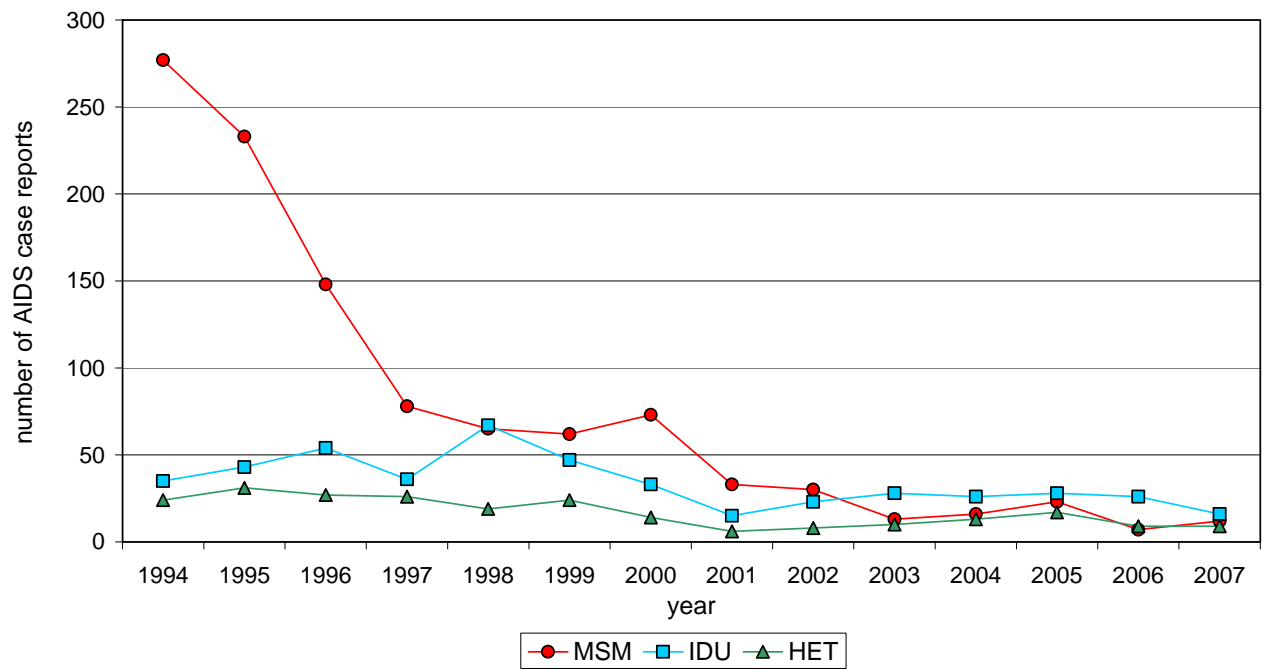


Table 1.8
AIDS Case Reports by ETHNICITY, GENDER and YEAR OF DIAGNOSIS, 2001 to 2007

Ethnicity	AIDS	2001	2002	2003	2004	2005	2006	2007	TOTAL
Caucasian	males	48	45	38	43	43	25	26	268
	females	3	2	6	4	7	3	2	27
	total	51	47	44	47	50	28	28	295
First Nations	males	5	5	8	7	8	5	4	42
	females	1	3	1	2	2	1	1	11
	total	6	8	9	9	10	6	5	53
Inuit	males	1	1	-	-	-	-	-	2
	females	-	-	-	-	-	-	-	-
	total	1	1	-	-	-	-	-	2
Metis	males	-	-	1	1	1	-	-	3
	females	-	-	-	-	-	-	-	-
	total	-	-	1	1	1	-	-	3
Asian	males	-	3	3	6	4	-	4	20
	females	-	-	1	1	-	-	-	2
	total	-	3	4	7	4	-	4	22
South Asian	males	1	2	2	1	-	-	1	7
	females	-	-	-	-	-	-	-	-
	total	1	2	2	1	-	-	1	7
Black	males	1	3	4	4	3	-	1	16
	females	1	2	1	-	1	2	1	8
	total	2	5	5	4	4	2	2	24
Hispanic	males	3	5	3	-	3	3	2	19
	females	1	-	-	-	-	-	-	1
	total	4	5	3	-	3	3	2	20
Arab/West Asian	males	-	1	-	-	-	-	-	1
	females	-	-	-	-	-	-	-	-
	total	-	1	-	-	-	-	-	1
other	males	-	-	2	-	-	1	-	3
	females	-	-	-	1	-	-	-	1
	total	-	-	2	1	-	1	-	4
unknown	males	19	28	37	23	26	34	17	184
	females	3	6	7	7	11	10	2	46
	total	22	34	44	30	37	44	19	230
total*	males	78	93	98	85	88	68	55	565
	females	9	13	16	15	21	16	6	96
	total	87	106	114	100	109	84	61	661

total* - Includes transgendered persons.

TOTAL column to the far right is cumulative from **2001 to 2007** December 31.

Table 1.9
Total AIDS Case Reports by ETHNICITY and GENDER – CUMULATIVE 1983 to 2007

Ethnicity	Males	Females	TOTAL*
Caucasian	2,783	151	2,935
First Nations	200	64	265
Inuit	6	1	7
Metis	11	-	11
Asian	73	7	80
South Asian	35	3	38
Black	61	23	84
Hispanic	59	4	63
Arab/West Asian	11	-	11
other	29	3	32
unknown	568	75	643
total	3,836	331	4,169

TOTAL* column to the far right is cumulative from **1983 to 2007** December 31, and includes transgendered persons.

Table 1.10
AIDS Case Reports by HEALTH SERVICE DELIVERY AREA*
and YEAR OF DIAGNOSIS, 2001 to 2007

HA	HSDA	AIDS	2001	2002	2003	2004	2005	2006	2007	TOTAL
Fraser	Fraser East	cases	1	3	1	2	5	-	2	14
		rate	0.4	1.2	0.4	0.8	1.9		0.7	
	Fraser North	cases	10	13	8	10	14	11	6	72
		rate	1.9	2.4	1.4	1.8	2.5	1.9	1.0	
	Fraser South	cases	4	9	6	6	8	4	5	42
		rate	0.7	1.5	1.0	0.9	1.2	0.6	0.7	
Interior	East Kootenay	cases	2	-	-	-	3	2	-	7
		rate	2.5				3.8	2.6		
	Kootenay Boundary	cases	-	2	1	-	-	1	1	5
		rate		2.5	1.3			1.3	1.3	
	Okanagan	cases	4	5	5	2	3	3	4	26
		rate	1.3	1.6	1.6	0.6	0.9	0.9	1.2	
	Thompson Cariboo Shuswap	cases	2	2	3	2	2	1	1	13
		rate	0.9	0.9	1.4	0.9	0.9	0.5	0.5	
Northern	Northeast	cases	-	-	-	1	-	-	-	1
		rate				1.5				
	Northern Interior	cases	5	1	3	4	2	2	2	19
		rate	3.3	0.7	2.0	2.7	1.4	1.4	1.4	
	Northwest	cases	-	-	1	4	-	-	1	6
		rate			1.2	5.0			1.3	
Vancouver Coastal	North Shore/Coast Garibaldi	cases	4	2	4	3	5	1	5	24
		rate	1.5	0.7	1.5	1.1	1.8	0.4	1.8	
	Richmond	cases	4	3	5	1	4	2	-	19
		rate	2.3	1.7	2.8	0.6	2.2	1.1		
	Vancouver	cases	35	51	53	48	52	31	26	296
		rate	6.0	8.7	8.9	8.0	8.5	5.0	4.1	
Vancouver Island	Central Vancouver Island	cases	3	2	4	3	-	5	1	18
		rate	1.3	0.8	1.6	1.2		1.9	0.4	
	North Vancouver Island	cases	-	1	3	1	-	1	2	8
		rate		0.9	2.6	0.9		0.8	1.7	
	South Vancouver Island	cases	9	10	12	12	10	19	3	75
		rate	2.6	2.9	3.4	3.4	2.8	5.3	0.8	
Unknown	Unknown	cases	3	2	5	1	1	1	1	14
Non-BC residents	Non-BC residents	cases	1	-	-	-	-	-	1	2
total		cases	87	106	114	100	109	84	61	661
		rate	2.1	2.6	2.7	2.4	2.6	1.9	1.4	

HSDA* - An AIDS case report, by year of diagnosis, is designated to the appropriate HSDA according to the patient's place of residence at the time of his/her diagnosis of AIDS (i.e. first disease indicative of AIDS). The HSDA is unknown when the patient address, physician address and/or clinic address are all missing from the data.

HA – Health Authority

HSDA – Health Service Delivery Area

Rate is per 100,000 population.

TOTAL column to far right is cumulative from **2001 to 2007** December 31.

Table 1.11
Total AIDS Case Reports by HEALTH SERVICE DELIVERY AREA* -
CUMULATIVE 1983 - 2007

HA	HSDA	TOTAL
Fraser	Fraser East	64
	Fraser North	253
	Fraser South	186
Interior	East Kootenay	15
	Kootenay Boundary	28
	Okanagan	95
	Thompson Cariboo Shuswap	47
Northern	Northeast	7
	Northern Interior	45
	Northwest	21
Vancouver Coastal	North Shore/Coast Garibaldi	172
	Richmond	68
	Vancouver	2,663
Vancouver Island	Central Vancouver Island	86
	North Vancouver Island	26
	South Vancouver Island	350
Unknown	Unknown	35
Non-BC residents	Non-BC residents	8
total		4,169

HSDA* - An AIDS case report, by year of diagnosis, is designated to the appropriate HSDA according to the patient's place of residence at the time of his/her diagnosis of AIDS (i.e. first disease indicative of AIDS). The HSDA is unknown when the patient address, physician address and/or clinic address are all missing from the data.

HA – Health Authority

HSDA – Health Service Delivery Area

TOTAL* column to the far right is cumulative from **1983 to 2007** December 31.

Table 1.12
AIDS Case Reports by FIRST DISEASE INDICATIVE OF AIDS and YEAR OF DIAGNOSIS,
1983 to 2007

Year of Diagnosis	KS	PCP	OI	OM	HIV WS	HIV ENC	PED	TOTAL
1983	1	3	3	-	-	-	-	7
1984	15	8	6	-	-	-	-	29
1985	15	29	12	6	-	-	-	62
1986	27	52	21	6	-	-	-	106
1987	25	76	22	8	2	1	-	134
1988	33	91	28	10	6	7	-	175
1989	52	117	37	6	6	5	-	223
1990	40	96	53	15	8	12	-	224
1991	45	120	69	7	14	10	-	265
1992	51	131	100	12	16	12	-	322
1993	46	115	132	16	33	14	1	357
1994	52	121	124	15	29	16	-	357
1995	48	107	126	5	29	21	1	337
1996	35	81	107	11	24	11	-	269
1997	16	42	66	11	13	10	-	158
1998	15	64	55	6	29	2	-	171
1999	14	62	55	5	16	8	-	160
2000	17	61	47	10	11	6	-	152
2001	7	27	30	4	14	4	1	87
2002	12	36	38	7	7	6	-	106
2003	7	38	51	4	10	4	-	114
2004	7	46	27	4	13	3	-	100
2005	14	41	33	5	11	5	-	109
2006	6	27	35	5	9	2	-	84
2007	5	28	21	1	5	1	-	61
total	605	1,619	1,298	179	305	160	3	4,169

KS – Kaposi's sarcoma

PCP – Pneumocystis carinii pneumonia

OI – other opportunistic infections

OM – other malignancies

HIV WS – Wasting syndrome due to HIV

HIV ENC – Encephalopathy, HIV-related

PED – diseases affecting pediatric cases only

HIV IN BRITISH COLUMBIA

On 1 May 2003, HIV was added to the Health Act as a reportable disease in British Columbia. HIV was added to the list of reportable diseases to facilitate patient follow-up and the notification and counseling of the partners of persons who have tested positive for HIV. Partner notification and counseling is standard public health practice for sexually transmitted infections and has been shown to reach people at high risk for infection. As of 1 May 2003, regional public health nurses follow-up each new positive HIV case by contacting the health care provider who ordered the test. Public health offers assistance with confidential and, when requested, anonymous counseling of partners. Public health is also available to provide resources and additional support to newly diagnosed HIV positive persons.

In BC, persons testing for HIV have the option to test with or without their name appearing on the test requisition (i.e., nominal and non-nominal testing). If a person selects the non-nominal option, he or she may test using only initials and a date of birth, and their name is not reported to the Medical Health Officer.

Interpretation of HIV Tables:

For HIV tests reported between 1985 and 1994, duplicates were removed by automated methods only. Since 1995, HIV test reports have been carefully examined by both automated and manual methods, further improving the detection of duplicates. In addition, in 2006-2007, BCCDC developed improved algorithms for the detection and elimination of duplicate HIV tests in the surveillance data; these algorithms have been applied to all data from 1995 and onwards.

With the implementation of the HIV reporting process in 2003 and the development of an enhanced system of follow-up through public health HIV nurses around the province, the follow-up of reported HIV cases and the collection of HIV-related history has markedly improved. Accordingly, public health authorities have been better able to distinguish between true new positive HIV tests in BC, and individuals with a first positive test in BC who have previously tested positive outside of BC. The improved identification and exclusion of these previous positive HIV cases has contributed to a decline in the new positive HIV rate since 2004. However, because insufficient historical information does not allow for re-classification of individuals with previously positive HIV tests outside BC, caution is advised in interpreting trends in reported numbers or rates of newly positive HIV infections prior to 2005 (for more information, please refer to the 2006 HIV/AIDS Annual Report, located at <http://www.bccdc.org/download.php?item=3321>).

In 2007, the total number of individuals with new positive HIV tests in BC was 395. This is an increase from 2006 (Table 2.1), but is the second lowest reported number of newly diagnosed cases in the past decade. However, these lowered numbers are in part an artifact, due to the improved identification of individuals previously testing HIV positive outside of BC. If one adds individuals with new positive HIV tests in BC and individuals with previously positive HIV tests outside of BC, the total number of reported first positive HIV tests in BC in 2007 increases from 395 to 455. Thus, while the number of individuals whose first positive HIV test was performed in BC best reflects the risk of HIV infection in BC, the total of these two numbers may be the best indicator of new service needs of individuals with HIV, including the need for treatment.

The number and rate of new positive HIV infections in BC is the best proxy indicator for HIV incidence in BC, and is the measure used in this report. For the reasons cited in the above paragraph, caution is advised in the interpretation of trends in reported numbers or rates of newly diagnosed HIV infections prior to 2005.

Acknowledgements:

HIVSS Team: Daphne Spencer, RN
Corrine Williams, RN
Paul Kim, BSc
Devon Haag, MSc
Linda Knowles, BScN

Michael L. Rekart, MD, DTM&H, MHSc, FRCPC
Mark Gilbert, MD, MHSc, FRCPC
Mel Krajden, MD, FRCP(C)
Elsie Wong, BScN, MBA

Staff from Virology Services, Laboratory Services, BC Centre for Disease Control, and PHSA Laboratory Services for the collecting and compiling of HIV requisition data.

Designated public health nurses in the various health service delivery areas for making contact with and offering support to persons testing positive for HIV.

Division of HIV/AIDS Surveillance, Bureau of HIV/AIDS and STD, Laboratory Centre for Disease Control, Health Protection Branch, Health Canada, for their financial contribution to the initial phases of this HIV surveillance project.

Table 2.1
Persons Testing Newly Positive for HIV by YEAR OF TESTING, 1985 to 2007

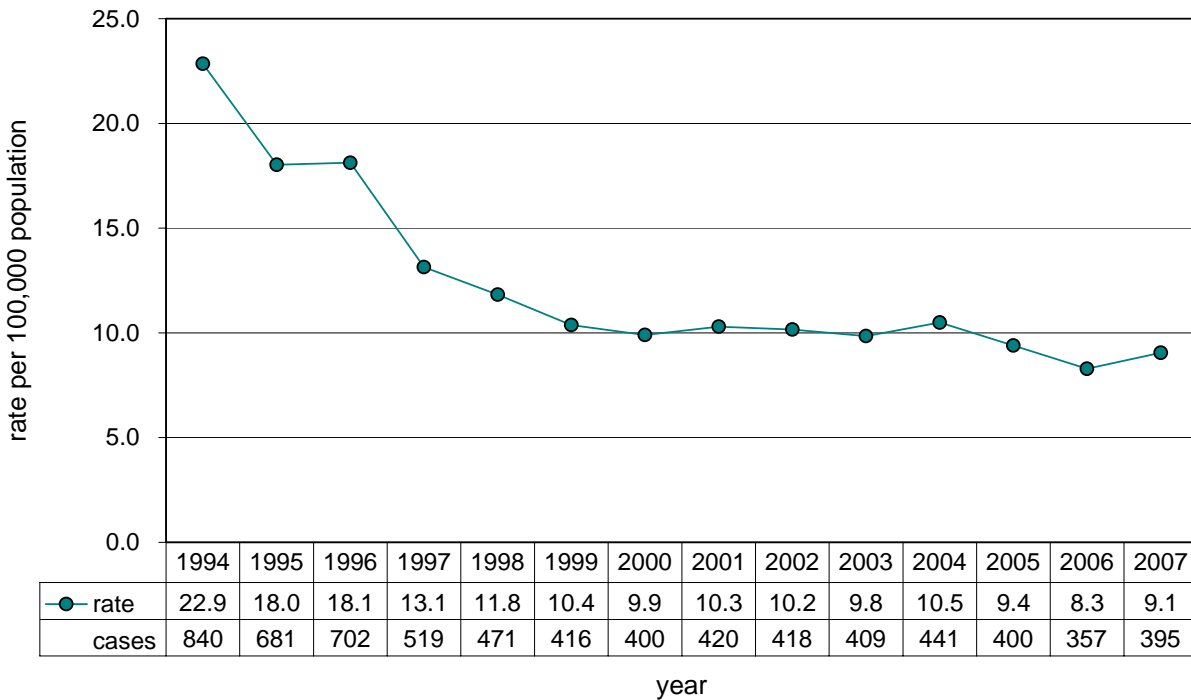
Year	Persons	Rate	Tests
1985	220	7.4	1,362
1986	670	22.3	5,328
1987	929	30.5	35,783
1988	746	23.9	28,866
1989	726	22.7	30,304
1990	645	19.6	38,025
1991	704	20.9	54,354
1992	788	22.7	84,368
1993	706	19.8	92,651
1994	840	22.9	104,024
1995	681	18.0	129,938
1996	702	18.1	138,022
1997	519	13.1	140,077
1998	471	11.8	137,437
1999	416	10.4	135,002
2000	400	9.9	134,808
2001	420	10.3	135,049
2002	418	10.2	145,429
2003	409	9.8	142,547
2004	441	10.5	153,592
2005	400	9.4	160,323
2006	357	8.3	171,748
2007	395	9.1	176,017
TOTAL:	13,003	-	2,375,054

TESTS is the number of HIV tests performed, positive and negative, by PHSA Laboratory Services.

RATE is per 100,000 population.

1985 annual total is for the months of October, November and December only.

Graph 2.1
Persons Testing Newly Positive for HIV in BC by YEAR OF TESTING,
1994 to 2007



Graph 2.2
Persons Testing Newly Positive for HIV in BC by GENDER and YEAR
OF TESTING, 1994 to 2007

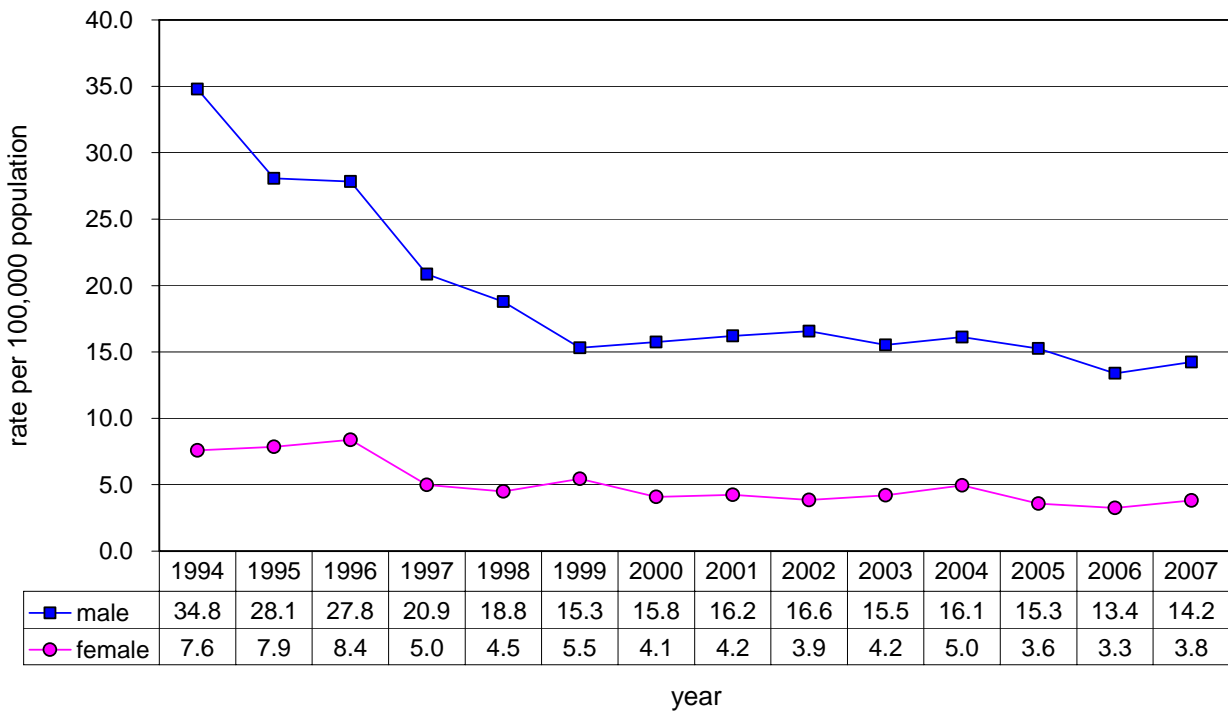


Table 2.2
Persons Testing Newly Positive for HIV by AGE and YEAR OF TESTING – MALES,
2001 to 2007

Age	HIV	2001	2002	2003	2004	2005	2006	2007	TOTAL
<1 yr	persons	1	-	-	-	-	1	-	2
	rate	4.8					4.8		
1 to 14	persons	1	-	1	-	-	1	-	3
	rate	0.3		0.3			0.3		
< 15 yrs	tests	598	621	592	568	574	728	750	4,431
15 to 19	persons	2	1	2	2	2	3	1	13
	rate	1.4	0.7	1.4	1.4	1.4	2.1	0.7	
	tests	2,628	2,862	2,691	2,759	2,918	3,176	3,018	20,052
20 to 29	persons	61	46	44	49	41	53	56	350
	rate	22.4	16.7	15.7	17.0	13.9	17.6	18.3	
	tests	14,882	16,377	15,973	16,907	18,662	19,900	20,135	122,836
30 to 39	persons	114	124	105	99	110	86	104	742
	rate	35.5	39.4	34.1	32.7	36.6	28.7	34.5	
	tests	14,598	15,547	14,300	14,989	15,748	16,101	16,463	107,746
40 to 49	persons	100	105	99	121	107	81	91	704
	rate	30.1	31.1	28.9	34.8	30.5	23.1	26.0	
	tests	10,523	10,909	10,647	11,704	12,044	12,622	12,740	81,189
50+	persons	47	61	69	65	62	61	56	421
	rate	8.1	10.2	11.1	10.1	9.4	8.9	7.9	
	tests	7,359	8,317	8,147	9,591	9,981	11,493	12,420	67,308
unknown	persons	2	1	-	-	-	-	-	3
	tests	230	205	154	123	135	104	101	1,052
total:	persons	328	338	320	336	322	286	308	2,238
	rate	16.2	16.6	15.5	16.1	15.3	13.4	14.2	
	tests	50,818	54,838	52,504	56,641	60,062	64,124	65,627	404,614

TOTAL column to far right is cumulative from **2001 to 2007** December 31.

TESTS is number of HIV tests performed, both positive and negative, by PHSA Laboratory Services.

RATE is per 100,000 population.

Table 2.3
Persons Testing Newly Positive for HIV by AGE and YEAR OF TESTING – FEMALES,
2001 to 2007

Age	HIV	2001	2002	2003	2004	2005	2006	2007	TOTAL
<1 yr	persons	-	-	-	-	-	-	-	-
	rate								
1 to 14	persons	1	1	-	4	1	1	-	8
	rate	0.3	0.3		1.2	0.3	0.3		
< 15 yrs	tests	838	851	794	869	768	931	883	5,934
15 to 19	persons	8	4	2	3	3	2	1	23
	rate	5.9	2.9	1.5	2.2	2.2	1.5	0.7	
	tests	7,165	7,196	6,811	6,834	6,676	7,073	6,756	48,511
20 to 29	persons	35	22	26	29	18	24	37	191
	rate	13.2	8.2	9.5	10.4	6.3	8.2	12.4	
	tests	31,956	33,948	33,427	35,789	37,994	41,082	41,795	255,991
30 to 39	persons	28	35	33	38	19	23	20	196
	rate	8.7	11.0	10.6	12.4	6.2	7.6	6.5	
	tests	27,598	29,554	29,606	31,546	32,713	35,367	36,751	223,135
40 to 49	persons	14	15	19	26	25	11	14	124
	rate	4.1	4.4	5.4	7.3	7.0	3.1	3.9	
	tests	9,013	9,726	9,508	10,357	10,683	11,594	11,744	72,625
50+	persons	1	3	8	5	11	10	12	50
	rate	0.2	0.5	1.2	0.7	1.5	1.3	1.5	
	tests	4,562	5,406	5,245	5,772	6,449	7,887	8,522	43,843
unknown	persons	-	-	-	-	-	-	-	-
	tests	348	282	596	1,328	245	146	156	3,101
total:	persons	87	80	88	105	77	71	84	592
	rate	4.2	3.9	4.2	5.0	3.6	3.3	3.8	
	tests	81,480	86,963	85,987	92,495	95,528	104,080	106,607	653,140

TOTAL column to far right is cumulative from **2001 to 2007** December 31.

TESTS is number of HIV tests performed, both positive and negative, by PHSA Laboratory Services.

RATE is per 100,000 population.

Table 2.4
Persons Testing Newly Positive for HIV by AGE and YEAR OF TESTING – GENDER
UNKNOWN, 2001 to 2007

Age	HIV	2001	2002	2003	2004	2005	2006	2007	TOTAL
< 1 yr	persons	-	-	-	-	-	-	-	-
1 to 14	persons	-	-	-	-	-	-	-	-
< 15 yrs	tests	44	59	52	69	64	120	52	460
15 to 19	persons	-	-	-	-	-	-	-	-
	tests	205	241	284	307	341	243	310	1,931
20 to 29	persons	1	-	-	-	-	-	-	1
	tests	746	887	1,011	1,100	1,246	940	1,067	6,997
30 to 39	persons	2	-	-	-	-	-	-	2
	tests	599	646	787	840	779	582	607	4,840
40 to 49	persons	-	-	-	-	-	-	-	-
	tests	323	383	526	596	576	423	407	3,234
50+	persons	1	-	-	-	-	-	-	1
	tests	310	453	661	786	765	492	530	3,997
unknown	persons	1	-	1	-	-	-	-	2
	tests	524	959	735	758	962	737	804	5,479
total:	persons	5	-	1	-	-	-	-	6
	tests	2,751	3,628	4,056	4,456	4,733	3,537	3,777	26,938

TOTAL column to far right is cumulative from **2001 to 2007** December 31.

TESTS is number of HIV tests performed, both positive and negative, by PHSA Laboratory Services.

RATE is per 100,000 population.

Table 2.5
Persons Testing Newly Positive for HIV by AGE and YEAR OF TESTING – TOTAL,
2001 to 2007

Age	HIV	2001	2002	2003	2004	2005	2006	2007	TOTAL
<15 yrs	persons	3	1	1	4	1	3	-	13
	rate	0.4	0.1	0.1	0.6	0.1	0.4		
	tests	1,480	1,531	1,438	1,506	1,406	1,779	1,685	10,825
15 to 19	persons	10	5	4	5	5	5	2	36
	rate	3.6	1.8	1.4	1.8	1.8	1.8	0.7	
	tests	9,998	10,299	9,786	9,900	9,935	10,493	10,084	70,495
20 to 29	persons	97	68	70	78	59	77	94	543
	rate	18.0	12.5	12.6	13.7	10.1	13.0	15.6	
	tests	47,584	51,212	50,411	53,796	57,902	61,926	62,997	385,828
30 to 39	persons	144	159	138	137	130	109	124	941
	rate	22.4	25.1	22.3	22.5	21.5	18.0	20.4	
	tests	42,795	45,747	44,693	47,375	49,240	52,051	53,824	335,725
40 to 49	persons	114	120	118	147	132	92	107	830
	rate	17.0	17.6	17.0	21.0	18.7	13.0	15.2	
	tests	19,859	21,018	20,681	22,657	23,303	24,639	24,892	157,049
50+	persons	49	64	77	70	73	71	68	472
	rate	4.0	5.1	5.9	5.2	5.3	4.9	4.6	
	tests	12,231	14,176	14,053	16,149	17,195	19,873	21,473	115,150
unknown	persons	3	1	1	-	-	-	-	5
	tests	1,102	1,446	1,485	2,209	1,342	987	1,062	9,633
total*:	persons	420	418	409	441	400	357	395	2,840
	rate	10.3	10.2	9.8	10.5	9.4	8.3	9.1	
	tests	135,049	145,429	142,547	153,592	160,323	171,748	176,017	1,084,705

total* - Includes transgendered persons.

TOTAL column to far right is cumulative from **2001 to 2007** December 31.

TESTS is number of HIV tests performed, both positive and negative, by PHSA Laboratory Services.

RATE is per 100,000 population.

Table 2.6
Total Persons Testing Newly Positive for HIV by AGE – CUMULATIVE, 1985 to 2007

Age	HIV	Males	Females	Unspecified	TOTAL*
< 1 yr	persons	9	4	1	14
1 to 14	persons	35	18	3	56
< 15 yrs	persons				71
	tests	12,382	16,009	1,087	29,478
15 to 19	persons	89	74	7	170
	tests	45,518	116,110	4,488	166,117
20 to 29	persons	2,567	614	72	3,254
	tests	287,644	542,042	19,349	850,106
30 to 39	persons	4,280	678	112	5,072
	tests	265,297	451,642	15,754	732,697
40 to 49	persons	2,451	316	59	2,828
	tests	172,557	150,264	8,020	330,842
50+	persons	1,095	97	22	1,214
	tests	127,420	82,719	7,612	217,753
unknown	persons	262	36	96	394
	tests	12,704	16,706	18,650	48,061
total	persons	10,789	1,837	372	13,003
	tests	923,522	1,375,492	76,027	2,375,054

* TOTAL column to far right is cumulative from **1985 to 2007** December 31, and includes transgendered persons.

Graph 2.3
Persons testing newly positive for HIV in BC by AGE and YEAR OF TESTING, 1994 to 2007

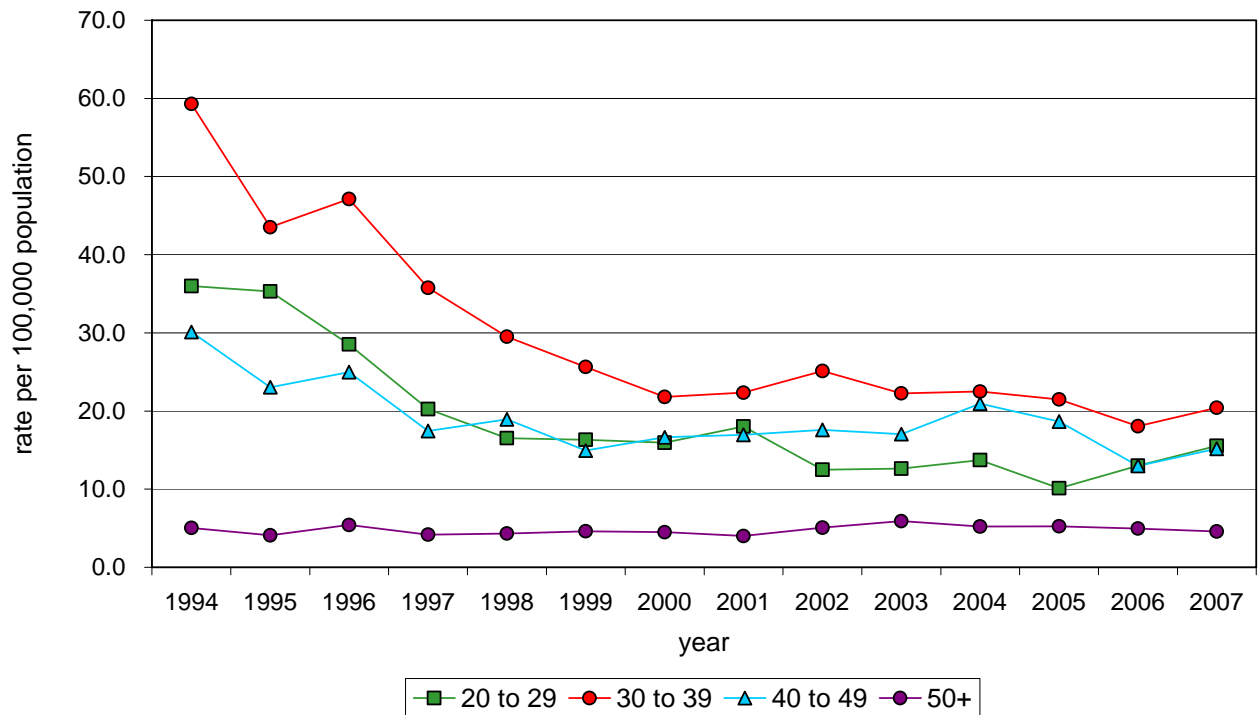


Table 2.7
Persons Testing Newly Positive for HIV by RISK CATEGORY and YEAR OF TESTING –
MALES, 2001 to 2007

Risk Category	2001	2002	2003	2004	2005	2006	2007	TOTAL
MSM	128	145	145	168	169	142	160	1,057
MSM/IDU	17	11	14	18	11	14	8	93
IDU	88	102	84	83	74	70	58	559
heterosexual contact	58	62	65	54	56	44	52	391
sex trade worker (STW)	-	-	-	-	1	1	-	2
STW/IDU	-	-	-	1	-	-	1	2
hemophiliac	-	-	-	-	-	-	-	-
blood/BP recipient (1)	2	6	4	4	3	6	3	28
occupational EXP (2)	1	1	-	-	-	-	1	3
other (3)	4	3	4	4	5	5	5	30
perinatal (4)	1	-	-	-	-	2	-	3
no identified risk	-	-	1	2	-	-	-	3
unknown	29	8	3	2	3	2	20	67
total:	328	338	320	336	322	286	308	2,238

TOTAL column to far right is cumulative from **2001 to 2007** December 31.

For 2007, not all risk data was available at the time of this publication and thus these HIV cases were noted as “unknown” in the appropriate tables. As this risk data becomes available it will be published in future reports.

Since 2002, risk data are no longer captured on the HIV requisition form. For this reason, the number of HIV tests performed is no longer published in the HIV tables associated with risk.

MSM – men who have sex with men (includes males who self-identify as bisexual)

IDU – injection drug user

HET – heterosexual contact

blood/BP recipient – blood or blood product recipient

occupational EXP – occupational exposure

(1), (2), (3), and (4) – refer to HIV FOOTNOTES on page 33.

Table 2.8
Persons Testing Newly Positive for HIV by RISK CATEGORY and YEAR OF TESTING –
FEMALES, 2001 to 2007

Risk Category	2001	2002	2003	2004	2005	2006	2007	TOTAL
WSW	1	-	1	-	-	-	-	2
IDU	27	37	21	19	24	20	23	171
heterosexual contact	43	25	33	42	24	27	31	225
sex trade worker (STW)	-	-	1	2	2	-	1	6
STW/IDU	12	16	25	35	21	20	19	148
hemophiliac	-	-	-	-	-	-	-	-
blood/BP recipient (1)	-	-	5	2	2	2	1	12
occupational EXP (2)	-	-	-	-	-	-	-	-
other (3)	-	-	-	-	2	1	-	3
perinatal (4)	1	1	-	4	1	1	-	8
no identified risk	-	-	-	-	-	-	-	-
unknown	3	1	2	1	1	-	9	17
total:	87	80	88	105	77	71	84	592

TOTAL column to far right is cumulative from **2001 to 2007** December 31.

For 2007, not all risk data was available at the time of this publication and thus these HIV cases were noted as “unknown” in the appropriate tables. As this risk data becomes available it will be published in future reports.

Since 2002, risk data are no longer captured on the HIV requisition form. For this reason, the number of HIV tests performed is no longer published in the HIV tables associated with risk.

WSW – women who have sex with women

IDU – injection drug user (includes WSW/IDU)

HET – heterosexual contact

blood/BP recipient – blood or blood product recipient

occupational EXP – occupational exposure

(1), (2), (3), and (4) – refer to HIV FOOTNOTES on page 33.

Table 2.9
Persons Testing Newly Positive for HIV by RISK CATEGORY and YEAR OF TESTING –
GENDER UNKNOWN, 2001 to 2007

Risk Category	2001	2002	2003	2004	2005	2006	2007	TOTAL
MSM	-	-	-	-	-	-	-	-
WSW	-	-	-	-	-	-	-	-
MSM/IDU	-	-	-	-	-	-	-	-
IDU	2	-	1	-	-	-	-	3
heterosexual contact	-	-	-	-	-	-	-	-
sex trade worker (STW)	-	-	-	-	-	-	-	-
STW/IDU	-	-	-	-	-	-	-	-
hemophiliac	-	-	-	-	-	-	-	-
blood/BP recipient (1)	-	-	-	-	-	-	-	-
occupational EXP (2)	-	-	-	-	-	-	-	-
other (3)	-	-	-	-	-	-	-	-
perinatal (4)	-	-	-	-	-	-	-	-
No Identified Risk	-	-	-	-	-	-	-	-
Unknown	3	-	-	-	-	-	-	3
total:	5	-	1	-	-	-	-	6

TOTAL column to far right is cumulative from **2001 to 2007** December 31.

For 2007, not all risk data was available at the time of this publication and thus these HIV cases were noted as “unknown” in the appropriate tables. As this risk data becomes available it will be published in future reports.

Since 2002, risk data are no longer captured on the HIV requisition form. For this reason, the number of HIV tests performed is no longer published in the HIV tables associated with risk.

MSM – men who have sex with men (includes males who self-identify as bisexual)

WSW – women who have sex with women

IDU – injection drug user (includes WSW/IDU)

HET – heterosexual contact

blood/BP recipient – blood/blood product recipient

occupational EXP – occupational exposure

(1), (2), (3), and (4) – refer to HIV FOOTNOTES on page 33.

Table 2.10
Persons Testing Newly Positive for HIV by RISK CATEGORY and YEAR OF TESTING –
TOTAL, 2001 to 2007

Risk Category	2001	2002	2003	2004	2005	2006	2007	TOTAL
MSM	128	145	145	168	169	142	161	1,058
WSW	1	-	1	-	-	-	-	2
MSM/IDU	17	11	14	18	12	14	10	96
IDU	117	139	106	102	98	90	81	733
heterosexual contact	101	87	98	96	80	71	83	616
sex trade worker (STW)	-	-	1	2	3	1	1	8
STW/IDU	12	16	25	36	21	20	20	150
hemophiliac	-	-	-	-	-	-	-	
blood/BP recipient (1)	2	6	9	6	5	8	4	40
occupational EXP (2)	1	1	-	-	-	-	1	3
other (3)	4	3	4	4	7	6	5	33
perinatal (4)	2	1	-	4	1	3	-	11
no identified risk	-	-	1	2	-	-	-	3
unknown	35	9	5	3	4	2	29	87
total*:	420	418	409	441	400	357	395	2,840

total* - Includes transgendered persons.

TOTAL column to far right is cumulative from **2001 to 2007** December 31.

For 2007, not all risk data was available at the time of this publication and thus these HIV cases were noted as “unknown” in the appropriate tables. As this risk data becomes available it will be published in future reports.

Since 2002, risk data are no longer captured on the HIV requisition form. For this reason, the number of HIV tests performed is no longer published in the HIV tables associated with risk.

MSM – men who have sex with men (includes males who self-identify as bisexual)

WSW – women who have sex with women

IDU – injection drug user (includes WSW/IDU)

HET – heterosexual contact

blood/BP recipient – blood/blood product recipient

occupational EXP – occupational exposure

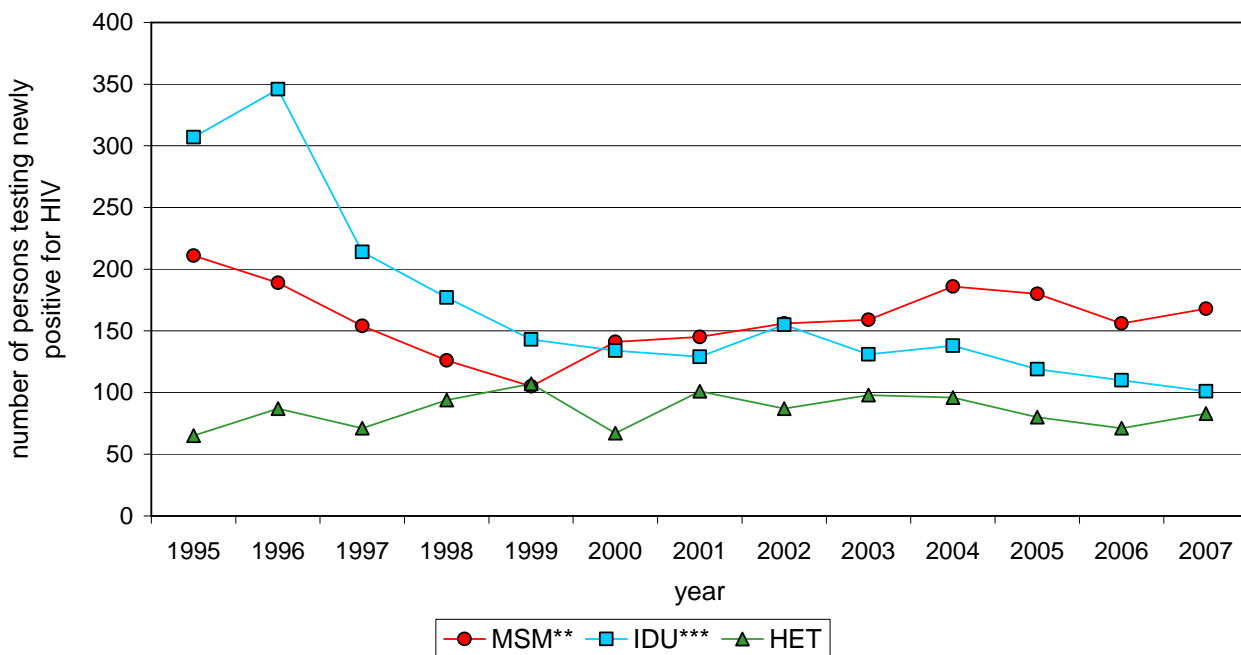
(1), (2), (3), and (4) – refer to HIV FOOTNOTES on page 33.

Table 2.11
Persons Testing Newly Positive for HIV by RISK CATEGORY – CUMULATIVE, 1985 to 2007

Risk Category	Males	Females	Unknown	TOTAL
MSM or WSW	5,636	16	97	5,751
MSM/IDU	298	-	2	305
IDU	1,880	576	35	2,489
heterosexual contact	904	515	15	1,434
sex trade worker (STW)	17	18	1	36
STW/IDU	24	339	3	366
hemophiliac	64	1	3	68
blood/BP recipient (1)	91	49	2	142
occupational EXP (2)	4	-	-	4
other (3)	84	23	3	110
perinatal (4)	19	18	2	39
no identified risk	3	-	-	3
unknown	1,765	282	209	2,256
total:	10,789	1,837	372	13,003

TOTAL column to far right is cumulative from 1985 to 2007 December 31, and includes transgendered persons.

Graph 2.4
Persons Testing Newly Positive for HIV in BC by MAJOR RISK CATEGORY and YEAR OF TESTING, 1995 to 2007*



* 2007 numbers may change as case follow-up is completed.

** MSM includes MSM/IDU

*** IDU includes STW/IDU and WSW/IDU

Prenatal Screening

Since pregnancy is not an HIV risk category, a separate table (Table 2.12) has been prepared to monitor the number of pregnant women whose HIV test requisition stated that the test was being done as a prenatal assessment and of these women, the number who have tested positive for HIV. Please note that the pregnant women who have tested positive for HIV are included under the appropriate *Risk Category* table in accordance with their identified risk (e.g. heterosexual contact). Males who test for HIV under the Prenatal Screening reason for testing, and who are partners of pregnant women who test for HIV, are also included in this table.

Table 2.12
Persons Testing Newly Positive for HIV – PRENATAL SCREENING, 2001 to 2007

Gender	HIV	2001	2002	2003	2004	2005	2006	2007	TOTAL
male	persons	2	-	-	-	-	-	-	6
	tests	188	148	210	97	95	53	322	3,986
female	persons	20	7	7	9	5	10	8	132
	tests	25,889	24,807	27,672	38,674	39,824	39,556	40,620	381,547
unknown	persons	-	-	-	-	-	-	-	-
	tests	467	475	509	515	606	350	496	7,241
total:	persons	22	7	7	9	5	10	8	130
	tests	26,544	25,430	28,391	39,286	40,525	39,959	41,438	392,774

Table 2.13
Persons Testing Newly Positive for HIV by ETHNICITY and YEAR OF TESTING – MALES, 2001 to 2007

Ethnicity	2001	2002	2003	2004	2005	2006	2007	TOTAL
Caucasian	230	227	214	242	224	201	199	1,537
First Nations	32	34	32	30	28	27	22	205
Inuit	-	1	1	-	-	-	-	2
Metis	3	3	5	6	4	1	1	23
Asian	12	16	12	12	18	14	15	99
South Asian	13	21	14	8	12	3	8	79
Black	10	10	15	9	12	9	6	71
Hispanic	9	19	11	11	16	14	17	97
Arab/West Asian	2	2	-	2	-	1	2	9
Other/Mixed Race	-	1	1	3	-	1	2	8
Unknown	17	4	15	13	8	15	36	108
total:	328	338	320	336	322	286	308	2,238

Table 2.14
Persons Testing Newly Positive for HIV by ETHNICITY and YEAR OF TESTING – FEMALES, 2001 to 2007

Ethnicity	2001	2002	2003	2004	2005	2006	2007	TOTAL
Caucasian	40	40	42	53	40	21	33	269
First Nations	31	25	25	30	25	25	27	188
Inuit	-	-	-	-	-	-	-	-
Metis	-	1	3	4	2	1	3	14
Asian	-	3	2	2	1	2	2	12
South Asian	1	2	2	3	2	7	4	21
Black	13	5	9	10	5	6	4	52
Hispanic	1	2	2	-	-	1	-	6
Arab/West Asian	-	1	-	-	1	1	-	3
Other/Mixed Race	-	-	-	1	1	1	1	4
Unknown	1	1	3	2	-	6	10	23
total:	87	80	88	105	77	71	84	592

Table 2.15
Persons Testing Newly Positive for HIV by ETHNICITY and YEAR OF TESTING – GENDER UNKNOWN, 2001 to 2007

Ethnicity	2001	2002	2003	2004	2005	2006	2007	TOTAL
Caucasian	3	-	-	-	-	-	-	3
First Nations	-	-	-	-	-	-	-	-
Inuit	-	-	-	-	-	-	-	-
Metis	-	-	-	-	-	-	-	-
Asian	-	-	-	-	-	-	-	-
South Asian	-	-	-	-	-	-	-	-
Black	-	-	-	-	-	-	-	-
Hispanic	-	-	-	-	-	-	-	-
Arab/West Asian	-	-	-	-	-	-	-	-
Other/Mixed Race	-	-	-	-	-	-	-	-
Unknown	2	-	1	-	-	-	-	3
total:	5	-	1	-	-	-	-	6

Table 2.16
Persons Testing Newly Positive for HIV by ETHNICITY and YEAR OF TESTING – TOTAL, 2001 to 2007

Ethnicity	2001	2002	2003	2004	2005	2006	2007	TOTAL
Caucasian	273	267	256	295	264	222	233	1,810
First Nations	63	59	57	60	54	52	49	394
Inuit	-	1	1	-	-	-	-	2
Metis	3	4	8	10	6	2	4	37
Asian	12	19	14	14	19	16	17	111
South Asian	14	23	16	11	14	10	12	100
Black	23	15	24	19	17	15	10	123
Hispanic	10	21	13	11	16	15	18	104
Arab/West Asian	2	3	-	2	1	2	2	12
Other/Mixed Race	-	1	1	4	1	2	3	12
Unknown	20	5	19	15	8	21	47	135
total*:	420	418	409	441	400	357	395	2,840

total* - Includes transgendered persons.

TOTAL column on far right of the preceding tables is cumulative from **2001 to 2007** December 31.

For 2007, not all ethnicity data was available at the time of this publication and thus these HIV cases were noted as "unknown" in the appropriate tables. As this ethnicity data becomes available it will be published in future reports.

Since 2002, ethnicity is no longer captured on the HIV requisition form. For this reason, the number of HIV tests performed is no longer published in the HIV tables associated with ethnicity.

Table 2.17
Persons Testing Newly Positive for HIV by ETHNICITY – CUMULATIVE, 1995 to 2007

Ethnicity	Males	Females	Unknown	TOTAL
Caucasian	3,081	597	11	3,691
First Nations	473	395	5	874
Inuit	4	1	-	5
Metis	36	21	-	57
Asian	180	20	-	200
South Asian	130	34	1	165
Black	135	90	1	226
Hispanic	171	13	1	186
Arab/West Asian	14	4	-	18
Other/Mixed Race	10	5	-	15
Unknown	472	106	13	592
total:	4,706	1,286	32	6,029

TOTAL column on far right is cumulative from **1995 to 2007** December 31, and includes transgendered persons.

Table 2.18
Persons Testing Newly Positive for HIV by HEALTH SERVICE DELIVERY AREA*
and YEAR OF TESTING, 2001 to 2007

HA	HSDA	HIV	2001	2002	2003	2004	2005	2006	2007	TOTAL
Fraser	Fraser East	persons	14	11	6	18	14	8	15	86
		rate	5.6	4.4	2.4	6.9	5.3	3.0	5.5	
	Fraser North	persons	42	51	54	55	41	32	37	312
		rate	7.8	9.3	9.8	9.9	7.3	5.6	6.4	
	Fraser South	persons	32	39	36	36	33	30	30	236
		rate	5.3	6.4	5.8	5.7	5.1	4.6	4.5	
Interior	East Kootenay	persons	-	1	1	1	1	2	-	6
		rate		1.3	1.3	1.3	1.3	2.6		
	Kootenay Boundary	persons	5	-	2	-	5	4	3	19
		rate	6.2		2.5		6.4	5.1	3.9	
	Okanagan	persons	12	7	13	12	10	4	9	67
		rate	3.9	2.2	4.1	3.7	3.1	1.2	2.7	
	Thompson Cariboo Shuswap	persons	13	5	12	6	4	7	6	53
		rate	6.1	2.3	5.6	2.8	1.8	3.2	2.7	
Northern	Northeast	persons	-	1	1	4	1	-	1	8
		rate		1.6	1.6	6.0	1.5		1.5	
	Northern Interior	persons	8	10	17	14	21	19	23	112
		rate	5.3	6.8	11.5	9.4	14.4	13.2	16.0	
	Northwest	persons	1	-	3	8	6	8	5	31
		rate	1.2		3.7	10.0	7.6	10.3	6.5	
Vancouver Coastal	North Shore/Coast Garibaldi	persons	12	9	12	12	11	8	13	77
		rate	4.5	3.4	4.5	4.5	4.1	2.9	4.7	
	Richmond	persons	5	11	6	8	7	1	4	42
		rate	2.9	6.3	3.4	4.5	3.9	0.5	2.2	
	Vancouver	persons	226	222	198	192	195	178	193	1,404
		rate	39.0	37.9	33.3	31.9	32.0	28.8	30.7	
Vancouver Island	Central Vancouver Island	persons	10	9	8	19	11	9	10	76
		rate	4.2	3.7	3.3	7.6	4.3	3.5	3.8	
	North Vancouver Island	persons	4	6	4	6	2	4	7	33
		rate	3.5	5.3	3.5	5.2	1.7	3.4	5.9	
	South Vancouver Island	persons	35	36	36	46	32	39	36	260
		rate	10.3	10.5	10.3	13.1	8.9	10.8	9.9	
unknown	unknown	persons	-	-	-	-	-	-	-	-
non-BC	non-BC	persons	1	-	-	4	6	4	3	18
Total	Total	persons	420	418	409	441	400	357	395	2,840
		rate	10.3	10.2	9.8	10.5	9.4	8.3	9.1	

*HEALTH SERVICE DELIVERY AREA- A person testing newly positive for HIV is designated to the appropriate HSDA according to the person's city of residence. If the person's city of residence is not available then the person is designated to the city of the clinic or physician where the person was tested.

HA – Health Authority

HSDA – Health Service Delivery Area

RATE is per 100,000 population.

TOTAL column to far right is cumulative from **2001 to 2007** December 31.

Table 2.19
Persons Testing Newly Positive for HIV by HEALTH SERVICE DELIVERY AREA* -
CUMULATIVE, 1995 to 2007

HA	HSDA	TOTAL
Fraser	Fraser East	186
	Fraser North	613
	Fraser South	506
Interior	East Kootenay	19
	Kootenay Boundary	37
	Okanagan	143
	Thompson Cariboo Shuswap	128
Northern	Northeast	14
	Northern Interior	144
	Northwest	45
Vancouver Coastal	North Shore/Coast Garibaldi	191
	Richmond	76
	Vancouver	3,202
Vancouver Island	Central Vancouver Island	161
	North Vancouver Island	58
	South Vancouver Island	460
Unknown	Unknown	28
Non-BC	Non-BC	18
total		6,029

*HEALTH SERVICE DELIVERY AREA- A person testing newly positive for HIV is designated to the appropriate HSDA according to the person's city of residence. If the person's city of residence is not available then the person is designated to the city of the clinic or physician where the person was tested.

HA – Health Authority

HSDA – Health Service Delivery Area

TOTAL column on far right is cumulative from **1995 to 2007** December 31.

Table 2.20
Persons Testing Newly Positive for HIV by SPECIMEN SOURCE and YEAR OF TESTING,
2001 to 2007

Specimen Source	HIV	2001	2002	2003	2004	2005	2006	2007	TOTAL*
Private Physician	persons	196	203	192	207	175	157	150	1,280
	tests	97,571	101,927	98,496	106,084	112,183	129,894	134,082	780,237
Hospital	persons	62	69	64	80	66	59	85	485
	tests	22,406	24,312	25,217	26,693	28,035	24,573	26,391	177,627
West 12th STD Clinic (5)	persons	17	9	11	18	19	15	10	99
	tests	2,060	4,103	3,541	3,143	3,413	3,619	3,645	23,524
Street Nurse Program (6)	persons	34	29	25	35	38	22	37	220
	tests	2,199	2,381	2,487	2,961	3,163	3,129	3,115	19,435
Health Unit	persons	5	6	4	8	4	10	16	53
	tests	5,653	5,891	5,668	5,556	5,899	6,150	5,890	40,707
Canadian Blood Services	persons	-	-	1	-	-	-	-	1
	tests	15	21	12	4	18	6	10	86
Study/Research (7)	persons	38	40	52	54	51	47	48	330
	tests	404	764	992	3,118	1,593	536	393	7,800
Vancouver Coastal Clinics (8)	persons	56	48	44	26	29	23	26	252
	tests	2,843	3,954	4,201	4,266	4,507	2,680	1,614	24,065
Treatment/Prevention Programs (9)	persons	4	11	6	7	11	17	12	68
	tests	882	1,083	1,105	1,000	883	541	371	5,865
Corrections (10)	persons	7	3	10	5	5	6	8	44
	tests	998	981	784	707	577	397	286	4,730
Other	persons	1	-	-	1	2	1	3	8
	tests	10	7	4	5	3	-	5	34
Unknown	persons	-	-	-	-	-	-	-	-
	tests	8	5	10	19	16	182	166	406
total:	persons	420	418	409	441	400	357	395	2,840
	tests	135,049	145,429	142,517	153,556	160,290	171,707	175,968	1,084,516

TOTAL column to far right is cumulative from **2001 to 2007** December 31. The total number of tests is less than reported in previous tables as quality control tests have been excluded.

TESTS is number of HIV tests performed, both positive and negative, by PHSA Laboratory Services. (5), (6), (7), (8), (9) and (10) – refer to HIV FOOTNOTES on page 33.

Table 2.21
Persons Testing Newly Positive for HIV by SPECIMEN SOURCE –
CUMULATIVE, 1989 to 2007

Specimen Source	TOTAL
Private Physician	5,591
Hospital	1,911
West 12th STD Clinic (5)	379
Street Nurse Program (6)	907
Health Unit	202
Canadian Blood Services	8
Study/Research (7)	743
Vancouver Coastal Clinics	468
Treatment/Prevention Prog	80
Corrections (10)	131
Other	10
Unknown	8
total:	10,438

TOTAL column on far right is cumulative from **1989 to 2007** December 31.

HIV FOOTNOTES

No.	Risk Category	Footnote
(1)	blood/BP recipient	As of May 2003, the follow up of possible transfusion transmissible infections is initiated by the public health nurses who, in collaboration with the MHO and the client, report the occurrence to Canadian Blood Services.
(2)	occupational EXP	Follow-up is done on each positive HIV test in this risk category to determine if the person's positive test is the result of a <u>true</u> occupational exposure.
(3)	other	Includes the following: endemic area immigrants; needle puncture; blood contact from bite, fight, etc.; semen recipients; organ donors; non-injection drug use; and unspecified parenteral exposure.
(4)	perinatal	Since HIV antibody testing is not diagnostic prior to 18 months of age, HIV infections documented in this age group are confirmed by Oak Tree Clinic through direct identification of HIV by PCR, p24 antigen testing and/or HIV culture on two or more consecutive assays. This category also includes children infected through perinatal transmission who have not been previously identified prior to the age of 18 months by a direct detection method for HIV.

No.	Specimen Source	Footnote
(5)	West 12 th STD Clinic	Located at 655 West 12 th Avenue in Vancouver BC.
(6)	Street Nurse Program	HIV testing is done by the outreach nurses at various sites in the Lower Mainland, including: outreach clinics, city jails, and detoxification centres.
(7)	Study/Research	To address the outbreak of HIV among IDUs, the BC Centre for Excellence in HIV/AIDS and the BC Centre for Disease Control have initiated several open cohort studies (VIDUS, CEDAR, ESIS) to investigate the determinants of HIV transmission and the progression of HIV in this client population.
(8)	Vancouver Coastal Clinics	HIV testing is conducted by various community health clinics in Vancouver and Richmond.
(9)	Treatment/Prevention Programs	HIV testing is generally a requirement for admission to detoxification centres and drug/alcohol treatment centres.
(10)	Corrections	Many inmates choose to get an HIV antibody test done at the time of intake or discharge or when they perceive that they have been at risk of acquiring HIV.