



BC Centre for Disease Control



*Excellence
Program*

*2000 Silver
Level Recipient*

HIV / AIDS UPDATE

Annual 2001

British Columbia Centre for Disease Control Society
STD/AIDS Control

prepared by

Robbie G. MacDougall, Research Officer
Michael L. Rekart, MD, FRCPC, DTM&H, Director
Linda Knowles, BSN Nursing Administrator
Daphne Spencer, RN, HIVSS
Corrine Williams, RN, HIVSS

Table of Contents

| | Page |
|---|------|
| AIDS in British Columbia | 3 |
| AIDS Case Reports by: | |
| Table 1.1 Year of Diagnosis, 1983 to 2001 | 4 |
| Graph 1.1 Year of Diagnosis, 1990 to 2001 | 4 |
| Table 1.2 Age and Year of Diagnosis - MALES, 1996 to 2001 | 5 |
| Table 1.3 Age and Year of Diagnosis - FEMALES, 1996 to 2001 | 5 |
| Table 1.4 Age and Year of Diagnosis - TOTAL, 1996 to 2001 | 6 |
| Graph 1.2 Gender and Year of Diagnosis, 1990 to 2001 | 6 |
| Graph 1.3 Age and Year of Diagnosis, 1990 to 2001 | 7 |
| Graph 1.4 Risk Category and Year of Diagnosis, 1990 to 2001 | 7 |
| Table 1.5 Risk Category, Gender and Year of Diagnosis, 1996 to 2001 | 8 |
| Table 1.6 Ethnicity, Gender and Year of Diagnosis, 1996 to 2001 | 9 |
| Table 1.7 Health Region and Year of Diagnosis, 1996 to 2001 | 10 |
| Table 1.7 Health Region and Year of Diagnosis, 1996 to 2001 (continued)..... | 11 |
| Table 1.8 First Disease Indicative of AIDS and Year of Diagnosis, 1983 to 2001 | 12 |
| Graph 1.5 Year of Diagnosis for BC and Canada, 1991 to 2001 | 13 |
| Graph 1.6 Age and Gender for BC, 2001 | 14 |
| Graph 1.7 Health Region for BC, 2001 | 15 |
| HIV In British Columbia | 16 |
| Persons Testing Newly Positive for HIV by: | |
| Table 2.1 Year of Diagnosis, 1985 to 2001 | 17 |
| Graph 2.1 Year of Diagnosis, 1991 to 2001 | 18 |
| Table 2.2 Age and Year - MALES, 1996 to 2001 | 19 |
| Table 2.3 Age and Year - FEMALES, 1996 to 2001 | 20 |
| Table 2.4 Age and Year - UNKNOWN, 1996 to 2001 | 21 |
| Graph 2.2 Gender and Year, 1991 to 2001 | 22 |
| Table 2.5 Age and Year - TOTAL, 1996 to 2001 | 23 |
| Graph 2.3 Age and Year, 1991 to 2001 | 24 |
| Graph 2.4 Risk Category and Year, 1991 to 2001 | 25 |
| Table 2.6 Risk Category and Year - MALES, 1996 to 2001 | 26 |
| Table 2.7 Risk Category and Year - FEMALES, 1996 to 2001 | 27 |
| Table 2.8 Risk Category and Year - UNKNOWN, 1996 to 2001 | 28 |
| Table 2.9 Risk Category and Year - TOTAL, 1996 to 2001 | 29 |
| Table 2.10 Ethnicity and Year - MALES, 1997 to 2001 | 30 |
| Table 2.11 Ethnicity and Year - FEMALES, 1997 to 2001 | 31 |
| Graph 2.5 Ethnicity and Year - MALES, 1996 to 2001 | 32 |
| Graph 2.6 Ethnicity and Year - FEMALES, 1996 to 2001 | 33 |
| Table 2.12 Ethnicity and Year - UNKNOWN, 1996 to 2001 | 34 |
| Table 2.13 Ethnicity and Year - TOTAL, 1996 to 2001 | 35 |
| Table 2.14 Health Region and Year, 1996 to 2001 | 36 |
| Table 2.15 Specimen Source and Year, 1996 to 2001 | 38 |
| Table 2.16 Maternal Antibody Positive Versus True HIV Infection, 1992 to 2001 . | 39 |
| Table 2.17 Prenatal Screening, 1996 to 2001 | 39 |
| Graph 2.7 HIV by Year for BC, 1990 to 2001 | 40 |
| Graph 2.8 HIV by AGE and Gender, 2001 | 41 |
| Graph 2.9 HIV by Health Region, 2001 | 42 |

AIDS IN BRITISH COLUMBIA

Prior to 1997, AIDS case reports were electronically compiled courtesy of the Vancouver Health Department. We'd like to take this opportunity to thank the Vancouver Health Department for their assistance with the AIDS data. Their cooperation was essential to the preparation of past reports.

To avoid duplicate data entry and to improve timelines, we have decided to use AIDS data entered by the Division of HIV/AIDS Surveillance, Bureau of HIV/AIDS and STD, Laboratory Centre for Disease Control, Health Protection Branch, Health Canada.

Any potential discrepancies between reports from the first quarter of 1997 onward and previous AIDS Update reports may be attributed to the transition from the use of the Vancouver Health Department's AIDS data to the use of Health Canada's AIDS data.

Detailed pre-1994 statistics are not provided in this semi-annual report due to page limitations but are available upon request. Please forward your request to the STD/AIDS Resource Centre by telephoning (604) 660-2090, faxing (604) 775-0808, or writing to:

British Columbia Centre for Disease Control Society
Division of STD/AIDS Control
STD/AIDS Resource Centre
655 West 12th Avenue
Vancouver BC V5Z 4R4

Acknowledgements:

Division of HIV/AIDS Surveillance, Bureau of HIV/AIDS and STD, Laboratory Centre for Disease Control, Health Protection Branch, Health Canada, for allowing us the use of their AIDS data.

Physicians, healthcare providers, and public health staff in British Columbia for taking the time and effort to complete and submit their AIDS case report forms.

Dr. Robert Hogg and Benita Yip from the BC Centre for Excellence in HIV/AIDS for their assistance in improving the reporting of new AIDS cases.

Table 1.1
AIDS Case Reports by YEAR OF DIAGNOSIS, 1983 to 2001

| Year of Diagnosis | Cases Reported | Rate | Cumulative Cases |
|-------------------|----------------|------|------------------|
| 1983 | 9 | 0.31 | 9 |
| 1984 | 29 | 0.98 | 38 |
| 1985 | 61 | 2.04 | 99 |
| 1986 | 106 | 3.53 | 205 |
| 1987 | 135 | 4.43 | 340 |
| 1988 | 175 | 5.62 | 515 |
| 1989 | 223 | 6.97 | 738 |
| 1990 | 225 | 6.84 | 963 |
| 1991 | 266 | 7.89 | 1,229 |
| 1992 | 296 | 8.53 | 1,525 |
| 1993 | 307 | 8.60 | 1,832 |
| 1994 | 305 | 8.28 | 2,137 |
| 1995 | 264 | 6.98 | 2,401 |
| 1996 | 177 | 4.56 | 2,578 |
| 1997 | 151 | 3.81 | 2,729 |
| 1998 | 149 | 3.72 | 2,878 |
| 1999 | 120 | 2.97 | 2,998 |
| 2000 | 109 | 2.68 | 3,107 |
| 2001 | 38 | 0.93 | 3,145 |
| TOTAL: | 3,145 | | |

2001 figures are year-to-date

Graph 1.1
AIDS Case Reports by YEAR OF DIAGNOSIS, 1990 to 2001

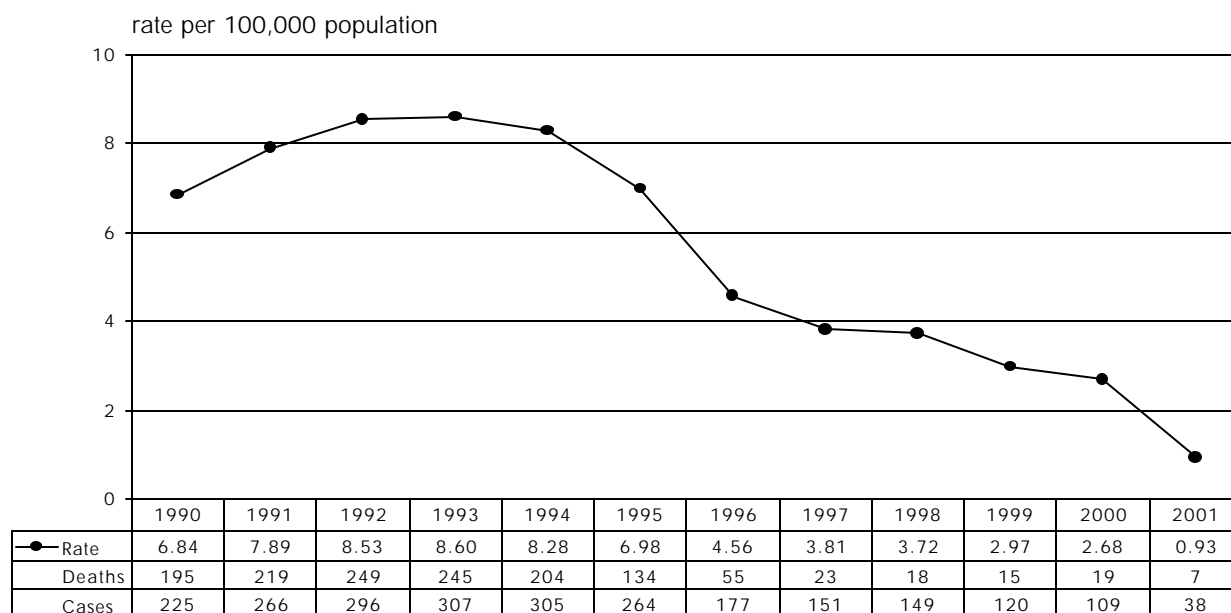


Table 1.2

AIDS Case Reports by AGE and YEAR OF DIAGNOSIS - MALES, 1996 to 2001

| Age | AIDS | 1996 | 1997 | 1998 | 1999 | 2000 | 2001 | TOTAL |
|----------|-------|-------|-------|-------|-------|-------|------|-------|
| <15 | cases | 1 | 1 | 1 | 1 | 1 | 1 | 12 |
| | rate | 0.26 | 0.26 | 0.26 | 0.26 | 0.26 | 0.27 | |
| 15 to 19 | cases | - | - | - | - | - | - | 8 |
| | rate | | | | | | | |
| 20 to 29 | cases | 15 | 14 | 13 | 4 | 5 | - | 375 |
| | rate | 5.30 | 4.93 | 4.60 | 1.43 | 1.83 | | |
| 30 to 39 | cases | 82 | 52 | 46 | 44 | 42 | 13 | 1,321 |
| | rate | 24.02 | 15.16 | 13.49 | 13.00 | 12.65 | 3.95 | |
| 40 to 49 | cases | 45 | 39 | 49 | 31 | 26 | 9 | 894 |
| | rate | 14.74 | 12.43 | 15.26 | 9.45 | 7.78 | 2.65 | |
| 50+ | cases | 16 | 14 | 19 | 16 | 22 | 10 | 330 |
| | rate | 3.28 | 2.76 | 3.62 | 2.95 | 3.91 | 1.73 | |
| unknown | cases | - | - | - | - | - | - | - |
| total: | cases | 159 | 120 | 128 | 96 | 96 | 33 | 2,940 |
| | rate | 8.22 | 6.09 | 6.42 | 4.77 | 4.75 | 1.62 | |

Table 1.3

AIDS Case Reports by AGE and YEAR OF DIAGNOSIS - FEMALES, 1996 to 2001

| Age | AIDS | 1996 | 1997 | 1998 | 1999 | 2000 | 2001 | TOTAL |
|----------|-------|------|------|------|------|------|------|-------|
| <15 | cases | - | 2 | - | - | - | - | 6 |
| | rate | | 0.54 | | | | | |
| 15 to 19 | cases | 1 | - | - | - | - | - | 1 |
| | rate | 0.81 | | | | | | |
| 20 to 29 | cases | 3 | 3 | 3 | 1 | 2 | 3 | 44 |
| | rate | 1.10 | 1.09 | 1.09 | 0.37 | 0.74 | 1.11 | |
| 30 to 39 | cases | 9 | 19 | 12 | 12 | 2 | - | 89 |
| | rate | 2.68 | 5.64 | 3.57 | 3.59 | 0.61 | | |
| 40 to 49 | cases | 3 | 4 | 5 | 7 | 5 | - | 39 |
| | rate | 0.99 | 1.28 | 1.56 | 2.13 | 1.49 | | |
| 50+ | cases | 2 | 2 | 1 | 2 | - | - | 14 |
| | rate | 0.37 | 0.35 | 0.17 | 0.33 | | | |
| unknown | cases | | | | | | | - |
| total: | cases | 18 | 30 | 21 | 22 | 9 | 3 | 193 |
| | rate | 0.92 | 1.51 | 1.04 | 1.08 | 0.44 | 0.15 | |

2001 figures are year-to-date

RATE is per 100,000 population.

TOTAL column to the far right is cumulative from 1983 to year-to-date 2001

Table 1.4
AIDS Case Reports by AGE and YEAR OF DIAGNOSIS - TOTAL, 1996 to 2001

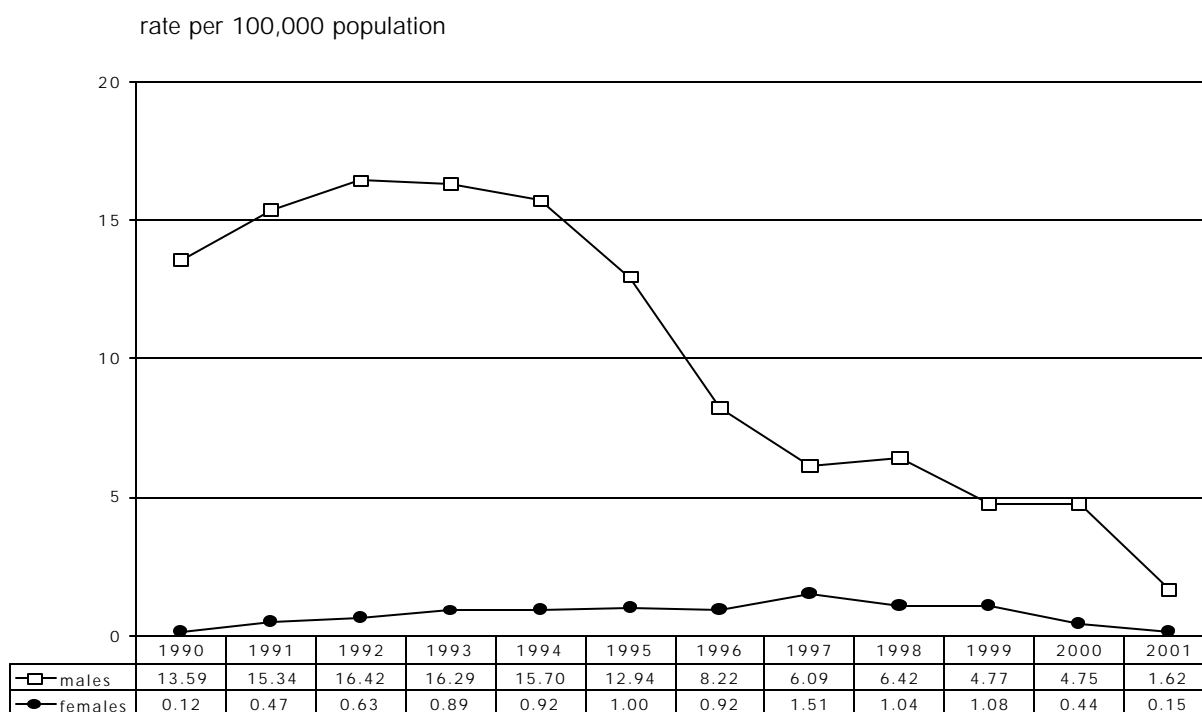
| Age | AIDS | 1996 | 1997 | 1998 | 1999 | 2000 | 2001 | TOTAL |
|----------|-------|-------|-------|------|------|------|------|-------|
| <15 | cases | 1 | 3 | 1 | 1 | 1 | 1 | 18 |
| | rate | 0.13 | 0.40 | 0.13 | 0.13 | 0.14 | 0.14 | |
| 15 to 19 | cases | 1 | - | - | - | - | - | 9 |
| | rate | 0.39 | | | | | | |
| 20 to 29 | cases | 18 | 17 | 16 | 5 | 7 | 3 | 419 |
| | rate | 3.23 | 3.04 | 2.87 | 0.91 | 1.29 | 0.55 | |
| 30 to 39 | cases | 91 | 71 | 58 | 56 | 44 | 13 | 1,410 |
| | rate | 13.45 | 10.44 | 8.57 | 8.32 | 6.66 | 1.98 | |
| 40 to 49 | cases | 48 | 43 | 54 | 38 | 31 | 9 | 933 |
| | rate | 7.88 | 6.86 | 8.41 | 5.79 | 4.63 | 1.32 | |
| 50+ | cases | 18 | 16 | 20 | 18 | 22 | 10 | 344 |
| | rate | 1.74 | 1.49 | 1.80 | 1.57 | 1.85 | 0.82 | |
| unknown | cases | - | 1 | - | 2 | 4 | 2 | 12 |
| total: | cases | 177 | 151 | 149 | 120 | 109 | 38 | 3,145 |
| | rate | 4.56 | 3.81 | 3.72 | 2.97 | 2.68 | 0.93 | |

RATE is per 100,000 population.

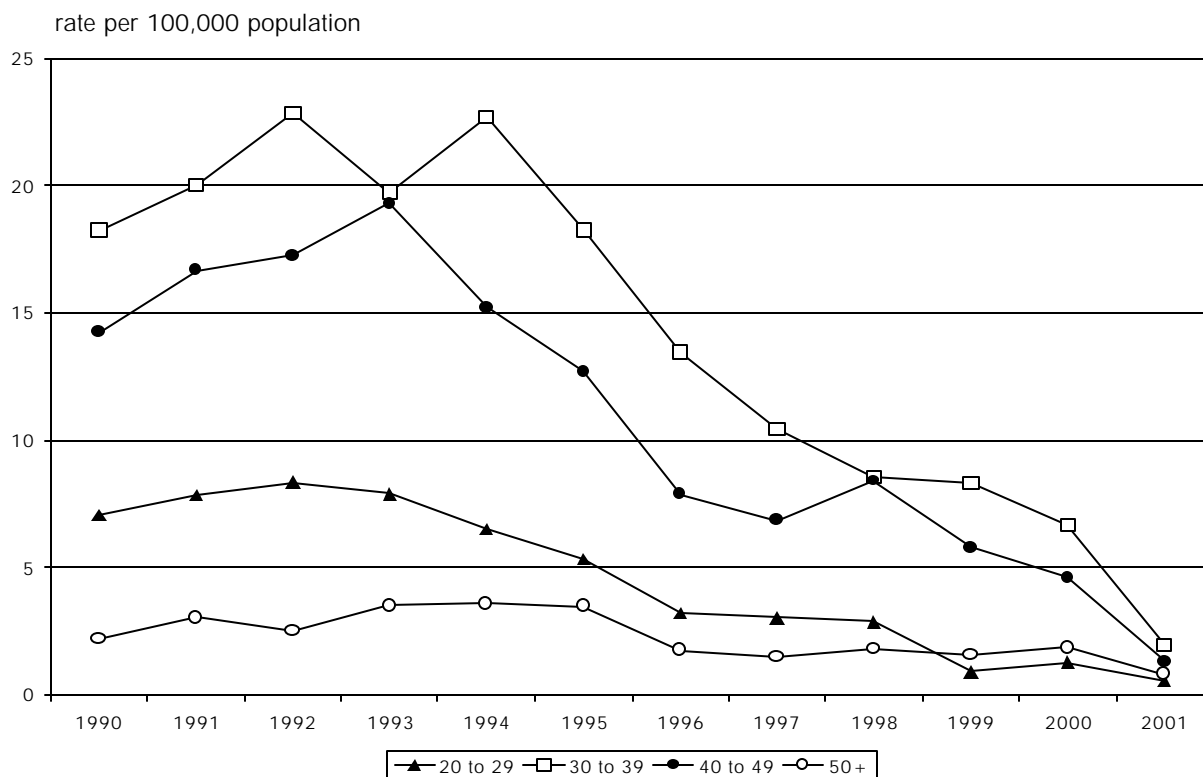
TOTAL column to the far right is cumulative from 1983 to year-to-date 2001.

2 Transgender AIDS case reports: 1997 and 1999.

Graph 1.2
AIDS Case Reports by GENDER and YEAR OF DIAGNOSIS, 1990 to 2001



Graph 1.3
AIDS Case Reports by AGE and YEAR OF DIAGNOSIS, 1990 to 2001



Graph 1.4
AIDS Case Reports by RISK CATEGORY AND YEAR OF DIAGNOSIS, 1990 to 2001

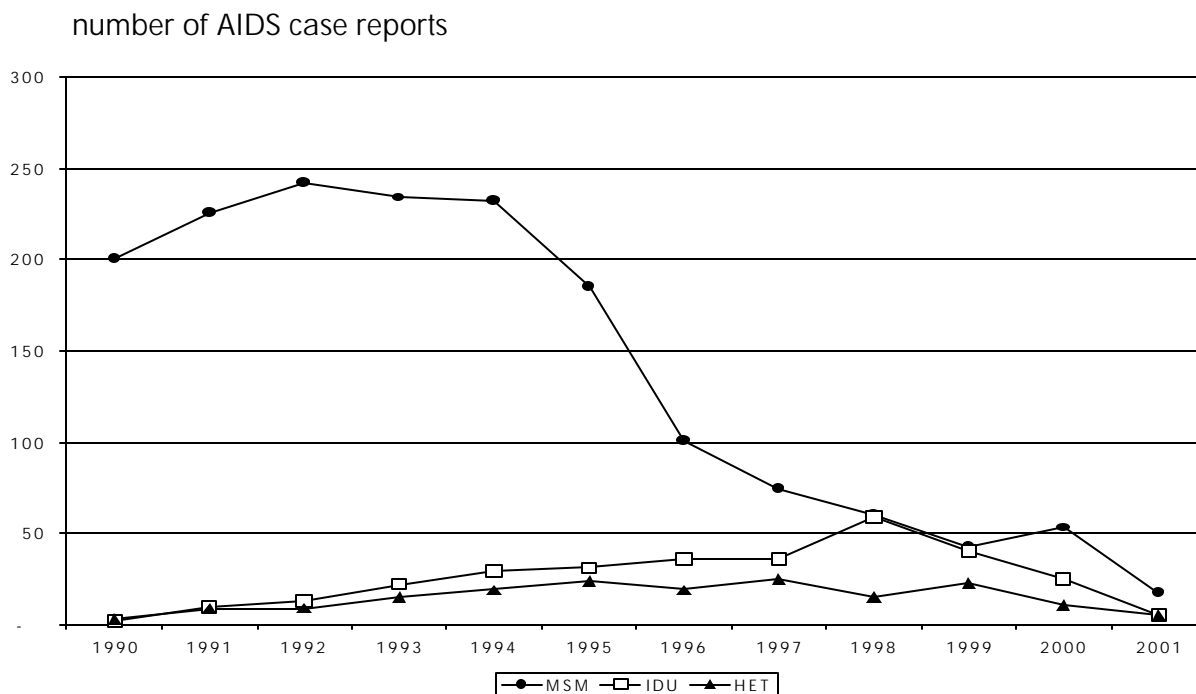


Table 1.5

AIDS Case Reports by RISK CATEGORY, GENDER, and YEAR OF DIAGNOSIS, 1996 to 2001

| Risk Category | AIDS | 1996 | 1997 | 1998 | 1999 | 2000 | 2001 | TOTAL |
|-------------------------|---------|------|------|------|------|------|------|-------|
| MSM or WSW | males | 101 | 74 | 60 | 43 | 53 | 17 | 2,328 |
| | females | - | - | - | - | - | - | |
| | total | 101 | 74 | 60 | 43 | 53 | 17 | 2,328 |
| MSM/IDU or WSW/IDU | males | 14 | 5 | 1 | 8 | 4 | 1 | 147 |
| | females | - | - | - | - | - | - | |
| | total | 14 | 65 | 1 | 8 | 4 | 1 | 207 |
| IDU | males | 27 | 20 | 43 | 29 | 19 | 5 | 219 |
| | females | 9 | 16 | 16 | 11 | 6 | - | 95 |
| | total | 36 | 36 | 59 | 40 | 25 | 5 | 314 |
| heterosexual contact | males | 11 | 15 | 13 | 13 | 8 | 2 | 112 |
| | females | 8 | 10 | 3 | 10 | 3 | 3 | 76 |
| | total | 19 | 25 | 16 | 23 | 11 | 5 | 188 |
| hemophiliac | males | 2 | 1 | - | - | - | - | 24 |
| | females | - | - | - | - | - | - | 2 |
| | total | 2 | 1 | | | | | 26 |
| blood/BP recipient | males | - | - | - | - | 1 | - | 11 |
| | females | - | - | 1 | - | - | - | 9 |
| | total | | | 1 | | 1 | | 20 |
| perinatal | males | 1 | 1 | 1 | - | - | - | 8 |
| | females | - | 1 | - | - | - | - | 5 |
| | total | 1 | 2 | 1 | | | | 13 |
| unknown* | males | 3 | 4 | 10 | 3 | 11 | 8 | 91 |
| | females | 1 | 3 | 1 | 1 | - | - | 6 |
| | total | 4 | 8 | 11 | 6 | 15 | 10 | 109 |
| total: | males | 159 | 120 | 128 | 96 | 96 | 33 | 2,940 |
| | females | 18 | 30 | 21 | 22 | 9 | 3 | 193 |
| | total | 177 | 151 | 149 | 120 | 109 | 38 | 3,145 |

TOTAL column to the far right is cumulative from 1983 to year-to-date 2001.
2 Transgender AIDS case reports: 1997 and 1999.

MSM - men who have sex with men
WSW - women who have sex with women
IDU - injection drug user
blood/BP recipient - blood or blood product recipient
unknown* - total contains unknown gender

Table 1.6
**AIDS Case Reports by ETHNICITY, GENDER and YEAR OF DIAGNOSIS,
 1996 to 2001**

| Ethnicity | AIDS | 1996 | 1997 | 1998 | 1999 | 2000 | 2001 | TOTAL |
|-----------------|---------|------|------|------|------|------|------|-------|
| Caucasian | males | 129 | 95 | 87 | 70 | 79 | 28 | 2,342 |
| | females | 14 | 13 | 10 | 9 | 4 | 2 | 109 |
| | total | 143 | 108 | 97 | 79 | 83 | 30 | 2,451 |
| First Nations | males | 15 | 12 | 18 | 14 | 8 | 1 | 143 |
| | females | 4 | 12 | 10 | 8 | 3 | - | 48 |
| | total | 19 | 24 | 28 | 22 | 11 | 1 | 191 |
| Asian | males | 3 | 3 | 3 | 2 | 2 | - | 44 |
| | females | - | - | - | 1 | - | - | 4 |
| | total | 3 | 3 | 3 | 3 | 2 | - | 48 |
| South Asian | males | 1 | 1 | 3 | 3 | 1 | 1 | 28 |
| | females | - | - | - | - | - | - | 2 |
| | total | 1 | 1 | 3 | 3 | 1 | 1 | 30 |
| Inuit | males | - | 1 | - | - | - | 1 | 4 |
| | females | - | - | - | - | - | - | 1 |
| | total | - | 1 | - | - | - | 1 | 5 |
| Metis | males | - | 4 | 1 | - | - | - | 8 |
| | females | - | - | - | - | - | - | - |
| | total | - | 4 | 1 | - | - | - | 8 |
| Black | males | 6 | 3 | 4 | 4 | 2 | - | 45 |
| | females | - | 3 | - | 3 | 2 | - | 15 |
| | total | 6 | 6 | 4 | 7 | 4 | - | 60 |
| Hispanic | males | 2 | - | 4 | 2 | 2 | 1 | 36 |
| | females | - | 1 | - | - | - | 1 | 4 |
| | total | 2 | 1 | 4 | 2 | 2 | 2 | 40 |
| Arab/West Asian | males | 1 | - | 1 | - | 1 | - | 5 |
| | females | - | - | - | - | - | - | - |
| | total | 1 | - | 1 | - | 1 | - | 5 |
| other | males | 1 | - | 3 | - | - | - | 21 |
| | females | - | - | - | 1 | - | - | 2 |
| | total | 1 | - | 3 | 1 | - | - | 23 |
| unknown* | males | 1 | 1 | 4 | 1 | 1 | 1 | 264 |
| | females | - | 1 | 1 | - | - | - | 8 |
| | total | 1 | 3 | 5 | 3 | 5 | 3 | 284 |
| total: | males | 159 | 120 | 128 | 96 | 96 | 33 | 2,940 |
| | females | 18 | 30 | 21 | 22 | 9 | 3 | 193 |
| | total | 177 | 151 | 149 | 120 | 109 | 38 | 3,145 |

TOTAL column to the far right is cumulative from 1983 to year-to-date 2001.

2 Transgender AIDS case reports: 1997 and 1999.

unknown*- total contains unknown gender

Table 1.7

AIDS Case Reports by HEALTH REGION* and YEAR OF DIAGNOSIS, 1996 to 2001

| Health Region | AIDS | 1996 | 1997 | 1998 | 1999 | 2000 | 2001 | TOTAL |
|--------------------------|-------|------|------|------|------|------|------|-------|
| Burnaby | cases | 2 | 5 | 3 | 5 | 2 | 3 | 73 |
| | rate | 1.07 | 2.65 | 1.58 | 2.61 | 1.04 | 1.55 | |
| Capital | cases | 25 | 3 | 2 | 2 | 6 | 1 | 225 |
| | rate | 7.54 | 0.90 | 0.60 | 0.60 | 1.79 | 0.30 | |
| Cariboo | cases | 1 | - | - | 1 | 2 | - | 8 |
| | rate | 1.36 | | | 1.31 | 2.61 | | |
| Central Fraser Valley | cases | | | | | | | 15 |
| | rate | | | | | | | |
| Central Vancouver Island | cases | 2 | 6 | 5 | - | 3 | 2 | 51 |
| | rate | 0.86 | 2.51 | 2.06 | | 1.23 | 0.81 | |
| Coast Garibaldi | cases | - | 1 | 1 | 2 | 3 | 2 | 26 |
| | rate | | 1.31 | 1.28 | 2.51 | 3.76 | 2.49 | |
| East Kootenay | cases | 1 | - | - | - | - | 1 | 9 |
| | rate | 1.26 | | | | | 1.19 | |
| Fraser Valley | cases | 1 | 3 | 4 | - | 1 | - | 37 |
| | rate | 0.43 | 1.27 | 1.67 | | 0.41 | | |
| Kootenay Boundary | cases | 3 | 2 | - | - | - | - | 13 |
| | rate | 3.68 | 2.43 | | | | | |
| North Okanagan | cases | - | - | 3 | - | 1 | - | 7 |
| | rate | | | 2.54 | | 0.84 | | |
| North Shore | cases | 3 | 6 | 4 | 6 | 5 | 1 | 105 |
| | rate | 1.70 | 3.36 | 2.22 | 3.32 | 2.76 | 0.56 | |
| North West | cases | - | 1 | - | 2 | 1 | - | 11 |
| | rate | | 1.09 | | 2.19 | 1.10 | | |

RATE is per 100,000 population.

TOTAL column to far right is cumulative from 1983 to year-to-date 2001.

CENTRAL FRASER VALLEY - As of 1996, any AIDS case reports, by year of diagnosis, that fall within the areas previously served by Central Fraser Valley Health Unit will now be designated to the following health regions: Mission to Fraser Valley; Maple Ridge and Pitt Meadows to Simon Fraser; and Langley to South Fraser.

* HEALTH REGION - An AIDS case report, by year of diagnosis, is designated to the appropriate HEALTH REGION according to the patient's place of residence at the time of his/her diagnosis of AIDS (i.e. first disease indicative of AIDS).

Table 1.7 (continued)

AIDS Case Reports by HEALTH REGION* and YEAR OF DIAGNOSIS, 1996 to 2001

| Health Region | AIDS | 1996 | 1997 | 1998 | 1999 | 2000 | 2001 | TOTAL |
|----------------------|-------|-------|-------|-------|-------|------|------|-------|
| Northern Interior | cases | 5 | 6 | 3 | 2 | - | 2 | 26 |
| | rate | 3.87 | 4.54 | 2.25 | 1.50 | | 1.49 | |
| Okanagan Similkameen | cases | 1 | 3 | 1 | 5 | 3 | 2 | 45 |
| | rate | 0.45 | 1.33 | 0.43 | 2.16 | 1.30 | 0.84 | |
| Peace Liard | cases | - | - | - | - | - | - | 8 |
| | rate | | | | | | | |
| Richmond | cases | 1 | - | 1 | 2 | 2 | - | 37 |
| | rate | 0.65 | | 0.62 | 1.21 | 1.21 | | |
| Simon Fraser | cases | 3 | 5 | 1 | 5 | 3 | 3 | 79 |
| | rate | 0.99 | 1.61 | 0.32 | 1.55 | 0.93 | 0.93 | |
| South Fraser | cases | 5 | 3 | 4 | 3 | 7 | 2 | 103 |
| | rate | 0.92 | 0.54 | 0.71 | 0.52 | 1.22 | 0.35 | |
| Thompson | cases | 1 | 2 | 5 | - | - | - | 20 |
| | rate | 0.77 | 1.50 | 3.69 | | | | |
| Upper Island | cases | - | 1 | 1 | 1 | 1 | - | 16 |
| | rate | | 0.82 | 0.81 | 0.81 | 0.81 | | |
| Vancouver | cases | 118 | 89 | 92 | 66 | 55 | 15 | 2,119 |
| | rate | 21.60 | 16.00 | 16.32 | 11.56 | 9.64 | 2.56 | |
| unknown | cases | 5 | 15 | 19 | 18 | 14 | 4 | 127 |
| | rate | | | | | | | |
| total: | cases | 177 | 151 | 149 | 120 | 109 | 38 | 3,145 |
| | rate | 4.56 | 3.81 | 3.72 | 2.97 | 2.69 | 0.93 | |

RATE is per 100,000 population.

TOTAL column to far right is cumulative from 1983 to year-to-date 2001.

* HEALTH REGION - An AIDS case report, by year of diagnosis, is designated to the appropriate HEALTH REGION according to the patient's place of residence at the time of his/her diagnosis of AIDS (i.e. first disease Indicative of AIDS).

Table 1.8

AIDS Case Reports by FIRST DISEASE INDICATIVE OF AIDS and YEAR OF DIAGNOSIS, 1983 to 2001

| Year of Diagnosis | KS | PCP | OI | OM | HIV WS | HIV ENC | None | TOTAL |
|-------------------|-----|-------|-------|-----|--------|---------|------|-------|
| 1983 | 1 | 2 | 4 | - | - | - | 2 | 9 |
| 1984 | 14 | 8 | 7 | - | - | - | - | 29 |
| 1985 | 13 | 27 | 15 | 6 | - | - | - | 61 |
| 1986 | 27 | 41 | 32 | 5 | - | - | 1 | 106 |
| 1987 | 24 | 69 | 30 | 9 | 1 | 2 | - | 135 |
| 1988 | 31 | 85 | 36 | 10 | 5 | 8 | - | 175 |
| 1989 | 49 | 103 | 54 | 7 | 6 | 4 | - | 223 |
| 1990 | 38 | 87 | 66 | 15 | 6 | 13 | - | 225 |
| 1991 | 45 | 112 | 82 | 7 | 11 | 9 | - | 266 |
| 1992 | 47 | 108 | 107 | 10 | 11 | 13 | - | 296 |
| 1993 | 39 | 94 | 123 | 14 | 23 | 14 | - | 307 |
| 1994 | 45 | 91 | 119 | 14 | 17 | 19 | - | 305 |
| 1995 | 36 | 74 | 107 | 7 | 19 | 21 | - | 264 |
| 1996 | 22 | 51 | 77 | 10 | 12 | 5 | - | 177 |
| 1997 | 15 | 36 | 68 | 13 | 10 | 9 | - | 151 |
| 1998 | 13 | 47 | 65 | 3 | 19 | 2 | - | 149 |
| 1999 | 12 | 44 | 44 | 6 | 9 | 4 | 1 | 120 |
| 2000 | 15 | 49 | 30 | 4 | 8 | 2 | 1 | 109 |
| 2001 | 5 | 15 | 8 | 1 | 7 | 2 | - | 38 |
| total: | 491 | 1,143 | 1,074 | 141 | 164 | 127 | 5 | 3,145 |

2001 figures are year-to-date 2001.

AIDS case reports formally classified as "KS and PCP" are now classified as either "KS" or "PCP".

KS - Kaposi's sarcoma

PCP - Pneumocystis carinii pneumonia

OI - other opportunistic infections

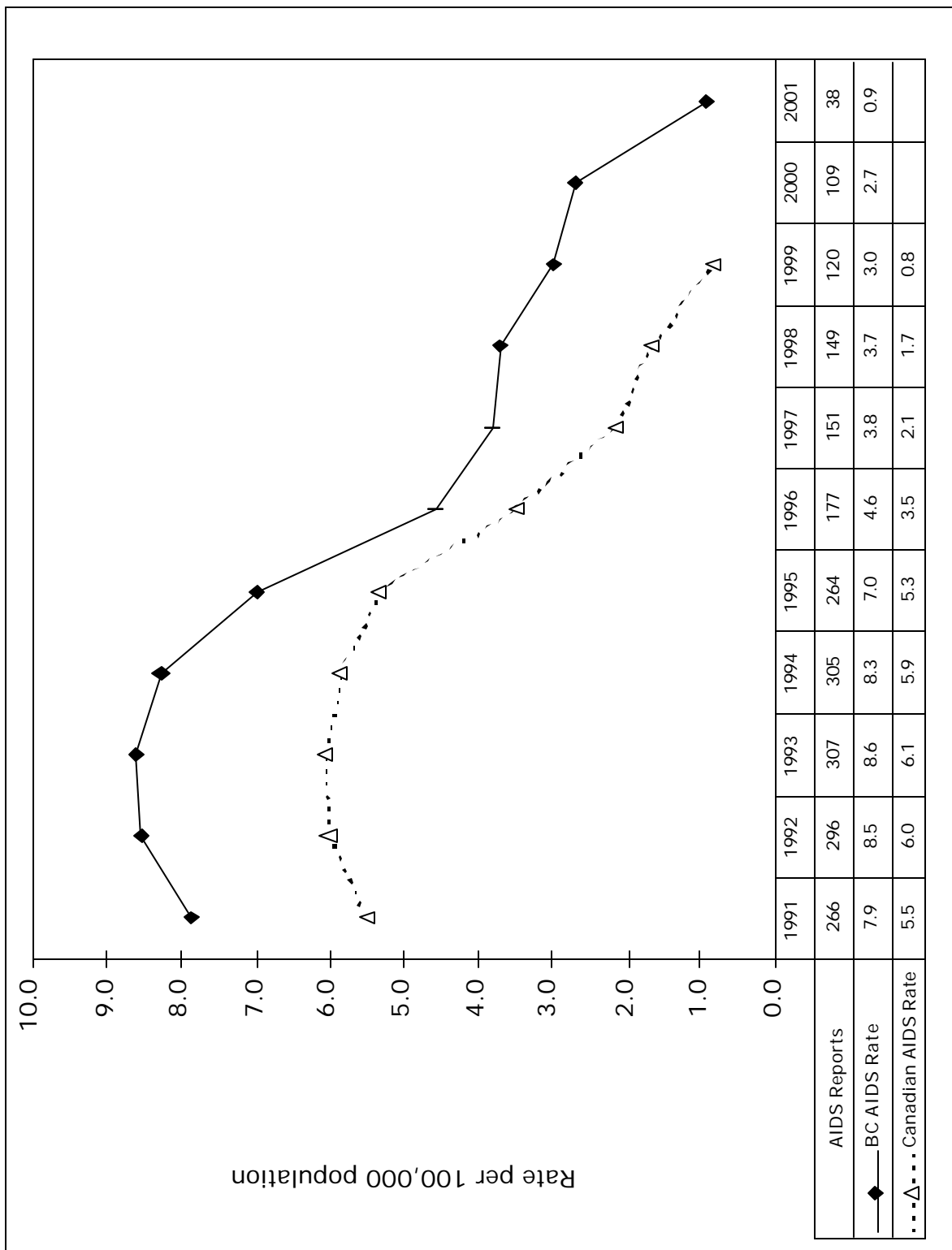
OM - other malignancies

HIV WS - Wasting syndrome due to HIV

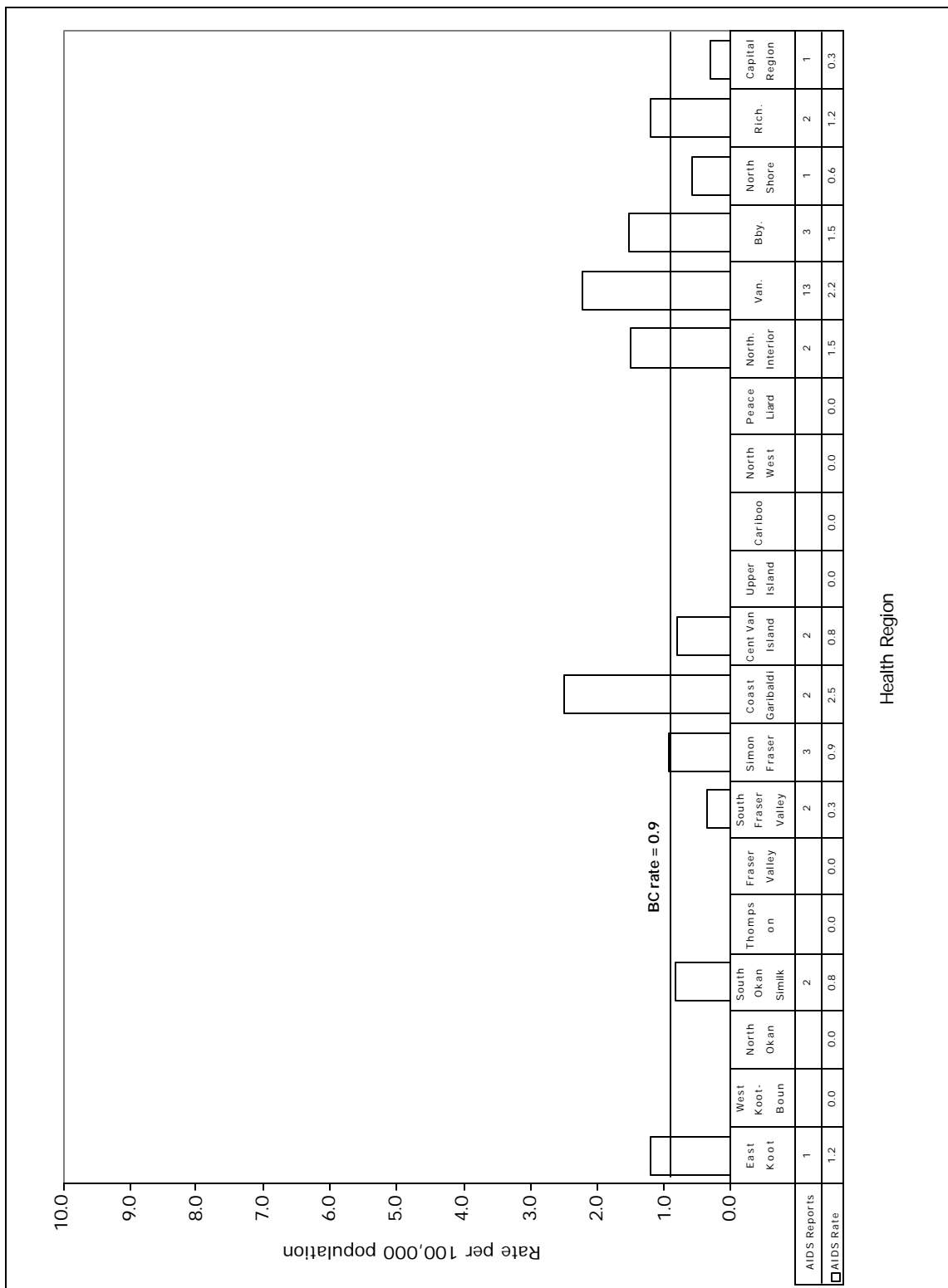
HIV ENC - Encephalopathy, HIV-related

Graph 1.5

AIDS Case Reports by YEAR OF DIAGNOSIS for BC and Canada 1991-2001



Graph 1.7
AIDS Case Reports by HEALTH REGION for BC 2001



HIV IN BRITISH COLUMBIA

In many jurisdictions, the use of HIV testing data to obtain an accurate view of the epidemic has been hampered by concerns over confidentiality. Consequent omission of unique patient identifiers from testing requisitions and data sets lead to difficulty with identifying duplicate tests for the same individual and with obtaining missing risk and demographic data.

Some jurisdictions in Canada have chosen to address the above concerns by adopting a system of nominal testing and reporting. Rather than opting to modify a system of non-nominal HIV testing which has been accepted by physicians and community groups in British Columbia, the division of STD/AIDS Control sought to improve HIV surveillance by enhancing and making better use of non-nominal information already in place.

The non-nominal *Enhanced HIV Surveillance System* (HIVSS) involves the following:

- Reporting of all positive HIV tests from the Provincial Laboratory to a surveillance database.
- A computerized algorithm to identify duplicate HIV testing reports.
- A nurse/epidemiologist to perform follow-up on all positive HIV test reports with the submitting healthcare providers. This serves to obtain missing information, validate existing information, and resolve outstanding questions of duplication. Also at this time, a selection of resources for assistance in case management is offered. During this interaction, a nurse/epidemiologist does not request client names when codes or initials have been used on requisitions.

Interpretation of HIV Tables:

In previous *Reports* (pre-1997), the HIV tables represented the number of reactive test reports without the removal of duplicates. With the HIVSS in place since January 1995, duplicate HIV test reports are now identified and removed from the data set.

For HIV test reports between 1985 and 1994, duplicates were removed by automated methods only. Since 1995, however, HIV test reports have been carefully examined by BOTH automated and manual methods which thus further improve the detection of duplicates. HIV data in the following tables now more closely represent the number of individuals with a new positive HIV test report.

Acknowledgements:

| | |
|---|----------------------|
| HIVSS team: David M. Patrick, MD, FRCPC, MHSc | Daphne Spencer, RN |
| Michael L. Rekart, MD, FRCPC, DTM&H | Lynn Wittenberg, RN |
| Darrel Cook, MSc | Anthony Rees, RN |
| Mel Kraiden, MD, FRCP(C) | Lisa Elliott, RN |
| Robbie MacDougall | Corrine Williams, RN |

Staff from the Virology Laboratory, Provincial Laboratory, British Columbia Centre for Disease Control Society, for the collecting and compiling of HIV data.

Division of HIV/AIDS Surveillance, Bureau of HIV/AIDS and STD, Laboratory Centre for Disease Control, Health Protection Branch, Health Canada, for their financial contribution to the initial phases of this HIVSS project.

Table 2.1

Persons Testing Newly Positive for HIV by YEAR, 1985 to 2001

| Year | Persons | Rate | Tests |
|--------|---------|------|-----------|
| 1985 | 220 | 7.4 | 1,362 |
| 1986 | 670 | 22.3 | 5,328 |
| 1987 | 929 | 30.5 | 35,783 |
| 1988 | 746 | 23.9 | 28,866 |
| 1989 | 726 | 22.7 | 30,302 |
| 1990 | 645 | 19.6 | 38,024 |
| 1991 | 704 | 20.9 | 54,310 |
| 1992 | 788 | 22.7 | 84,419 |
| 1993 | 706 | 19.8 | 92,606 |
| 1994 | 840 | 22.8 | 104,118 |
| 1995 | 690 | 18.2 | 130,338 |
| 1996 | 714 | 18.4 | 138,250 |
| 1997 | 561 | 14.2 | 140,278 |
| 1998 | 482 | 12.0 | 137,701 |
| 1999 | 427 | 10.6 | 135,284 |
| 2000 | 413 | 10.2 | 135,488 |
| 2001 | 440 | 10.7 | 135,806 |
| TOTAL: | 10,701 | - | 1,428,263 |

2001 figures are year-to-date.

TESTS is the number of HIV tests performed, positive and negative, at the Provincial Laboratory.

RATE is per 100,000 population.

1985 annual total is for the months of October, November and December only.

Graph 2.1

Persons Testing Newly Positive for HIV by YEAR, 1990 to 2001

rate per 100,000 population

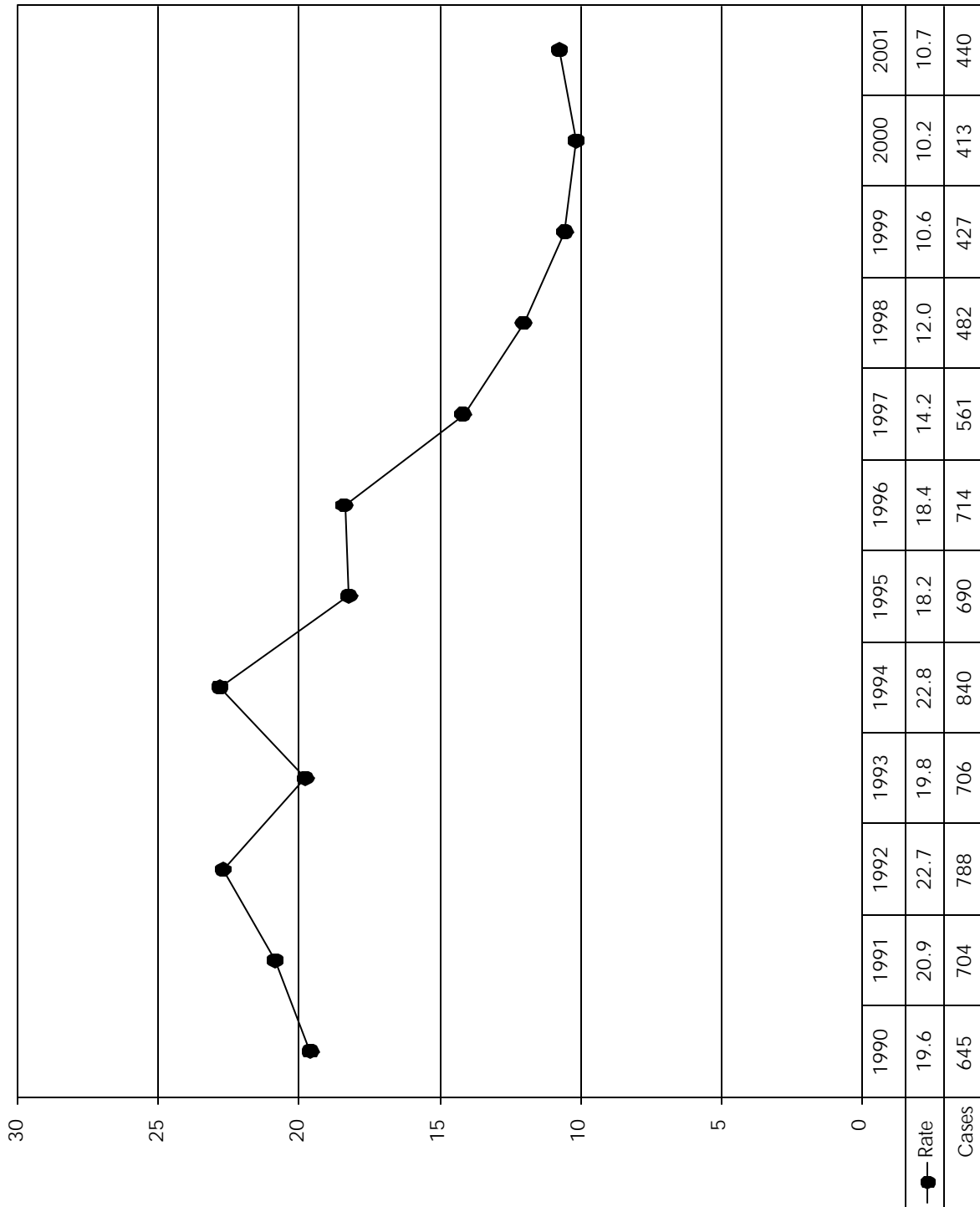


Table 2.2

Persons Testing Newly Positive for HIV by AGE and YEAR - MALES, 1996 to 2001

| Age | HIV | 1996 | 1997 | 1998 | 1999 | 2000 | 2001 | TOTAL |
|---------------------|---------|--------|--------|--------|--------|--------|--------|---------|
| < 18 mos | persons | 1 | 2 | 1 | | | | 15 |
| | rate | 1.35 | 2.70 | 1.37 | | | | |
| 19 mos to 14 yrs | persons | 1 | 1 | 2 | 1 | 2 | 2 | 30 |
| | rate | 0.32 | 0.32 | 0.63 | 0.32 | 0.64 | 0.65 | |
| < 15 yrs | tests | 394 | 682 | 544 | 489 | 495 | 466 | 6,423 |
| 15 to 19 | persons | 6 | 2 | 3 | 3 | 3 | 3 | 76 |
| | rate | 4.58 | 1.49 | 2.20 | 2.18 | 2.16 | 2.15 | |
| | tests | 2,155 | 2,803 | 2,750 | 2,816 | 2,663 | 2,625 | 25,371 |
| 20 to 29 | persons | 98 | 88 | 57 | 52 | 63 | 61 | 2,273 |
| | rate | 34.63 | 30.96 | 20.17 | 18.61 | 23.00 | 22.30 | |
| | tests | 16,163 | 16,215 | 16,213 | 15,782 | 15,324 | 14,902 | 177,095 |
| 30 to 39 | persons | 255 | 199 | 163 | 139 | 120 | 119 | 3,692 |
| | rate | 74.70 | 58.00 | 47.82 | 41.05 | 36.15 | 36.19 | |
| | tests | 15,447 | 15,431 | 15,146 | 14,866 | 14,898 | 14,638 | 173,360 |
| 40 to 49 | persons | 128 | 107 | 103 | 75 | 86 | 108 | 1,885 |
| | rate | 41.92 | 34.10 | 32.08 | 22.86 | 25.74 | 31.85 | |
| | tests | 9,141 | 9,549 | 9,772 | 9,814 | 10,005 | 10,598 | 103,921 |
| 50+ | persons | 54 | 47 | 46 | 44 | 49 | 48 | 733 |
| | rate | 11.08 | 9.28 | 8.78 | 8.12 | 8.72 | 8.30 | |
| | tests | 5,623 | 6,156 | 6,180 | 6,569 | 7,189 | 7,448 | 69,332 |
| unknown | persons | | 2 | 2 | 1 | 1 | 2 | 259 |
| | tests | 1,055 | 949 | 785 | 365 | 423 | 373 | 14,579 |
| total: | persons | 543 | 448 | 377 | 315 | 324 | 343 | 8,963 |
| | rate | 28.08 | 22.73 | 18.90 | 15.66 | 16.05 | 16.88 | |
| | tests | 49,978 | 51,785 | 51,390 | 50,701 | 50,997 | 51,050 | 570,081 |

2001 figures are year-to-date

TESTS is the number of HIV tests performed, positive and negative, at the Provincial Laboratory.

RATE is per 100,000 population

TOTAL column to far right is cumulative from 1985 to year-to-date 2001.

Table 2.3

**Persons Testing Newly Positive for HIV by AGE and YEAR - FEMALES,
1996 to 2001**

| Age | HIV | 1996 | 1997 | 1998 | 1999 | 2000 | 2001 | TOTAL |
|---------------------|---------|--------|--------|--------|--------|--------|--------|---------|
| < 18 mos | persons | | | 1 | | | | 7 |
| | rate | | | 1.46 | | | | |
| 19 mos to 14 yrs | persons | 1 | | | | 1 | 1 | 7 |
| | rate | 0.34 | | | | 0.34 | 0.34 | |
| < 15 yrs | tests | 581 | 956 | 846 | 835 | 723 | 688 | 7,964 |
| 15 to 19 | persons | 5 | 1 | 1 | 3 | 4 | 7 | 54 |
| | rate | 4.07 | 0.79 | 0.78 | 2.32 | 3.04 | 5.32 | |
| | tests | 7,031 | 8,271 | 8,138 | 7,802 | 7,607 | 7,139 | 69,239 |
| 20 to 29 | persons | 53 | 29 | 37 | 35 | 27 | 36 | 468 |
| | rate | 19.38 | 10.52 | 13.45 | 12.83 | 10.02 | 13.31 | |
| | tests | 32,991 | 33,240 | 33,187 | 32,694 | 32,120 | 31,947 | 313,463 |
| 30 to 39 | persons | 74 | 54 | 35 | 37 | 26 | 28 | 527 |
| | rate | 22.07 | 16.03 | 10.42 | 11.07 | 7.92 | 8.57 | |
| | tests | 26,977 | 26,462 | 26,425 | 26,951 | 27,460 | 27,658 | 259,610 |
| 40 to 49 | persons | 31 | 13 | 19 | 26 | 25 | 15 | 211 |
| | rate | 10.20 | 4.15 | 5.92 | 7.91 | 7.44 | 4.39 | |
| | tests | 8,595 | 9,022 | 8,779 | 8,797 | 9,130 | 9,105 | 88,921 |
| 50+ | persons | 3 | 5 | 3 | 10 | 5 | 1 | 51 |
| | rate | 0.55 | 0.88 | 0.51 | 1.66 | 0.80 | 0.16 | |
| | tests | 3,821 | 4,525 | 4,191 | 4,234 | 4,581 | 4,645 | 44,947 |
| unknown | persons | | 1 | | | 1 | | 36 |
| | tests | 1,672 | 1,404 | 1,230 | 525 | 539 | 514 | 17,250 |
| total: | persons | 167 | 103 | 96 | 111 | 89 | 88 | 1,361 |
| | rate | 8.57 | 5.18 | 4.76 | 5.46 | 4.35 | 4.26 | |
| | tests | 81,668 | 83,880 | 82,796 | 81,838 | 82,160 | 81,696 | 801,394 |

2001 figures are year-to-date

TESTS is the number of HIV tests performed, positive and negative, at the Provincial Laboratory.

RATE is per 100,000 population.

TOTAL column to far right is cumulative from 1985 to year to 2001 year-to-date.

Table 2.4

Persons Testing Newly Positive for HIV by AGE and YEAR - GENDER UNKNOWN, 1996 to 2001

| Age | HIV | 1996 | 1997 | 1998 | 1999 | 2000 | 2001 | TOTAL |
|---------------------|---------|-------|-------|-------|-------|-------|-------|--------|
| < 18 mos | persons | | | | | | | |
| 19 mos to 14 yrs | persons | | 1 | | | | | 2 |
| < 15 yrs | tests | 41 | 43 | 32 | 24 | 35 | 37 | 592 |
| 15 to 19 | persons | | | | | | | 7 |
| | tests | 394 | 233 | 225 | 197 | 192 | 243 | 3,459 |
| 20 to 29 | persons | | 1 | 1 | | | 2 | 71 |
| | tests | 2,089 | 1,166 | 927 | 681 | 597 | 839 | 18,201 |
| 30 to 39 | persons | 2 | 6 | 2 | | | 3 | 112 |
| | tests | 1,763 | 1,007 | 747 | 491 | 495 | 660 | 14,661 |
| 40 to 49 | persons | 1 | 1 | 2 | | | 2 | 62 |
| | tests | 700 | 462 | 313 | 225 | 267 | 366 | 6,313 |
| 50+ | persons | 1 | | 1 | | | 1 | 22 |
| | tests | 494 | 319 | 215 | 167 | 248 | 353 | 4,539 |
| unknown | persons | | 1 | 3 | 1 | | 1 | 101 |
| | tests | 1,123 | 1,383 | 1,056 | 960 | 497 | 562 | 9,023 |
| total: | persons | 4 | 10 | 9 | 1 | - | 9 | 377 |
| | tests | 6,604 | 4,613 | 3,515 | 2,745 | 2,331 | 3,060 | 56,788 |

2001 figures are year-to-date

TESTS is the number of HIV tests performed, positive and negative, at the Provincial Laboratory.

TOTAL column to far right is cumulative from 1985 to 2001 year-to-date.

Graph 2.2
Persons Testing Newly Positive for HIV by GENDER and YEAR, 1991 to 2001

rate per 100,000 population

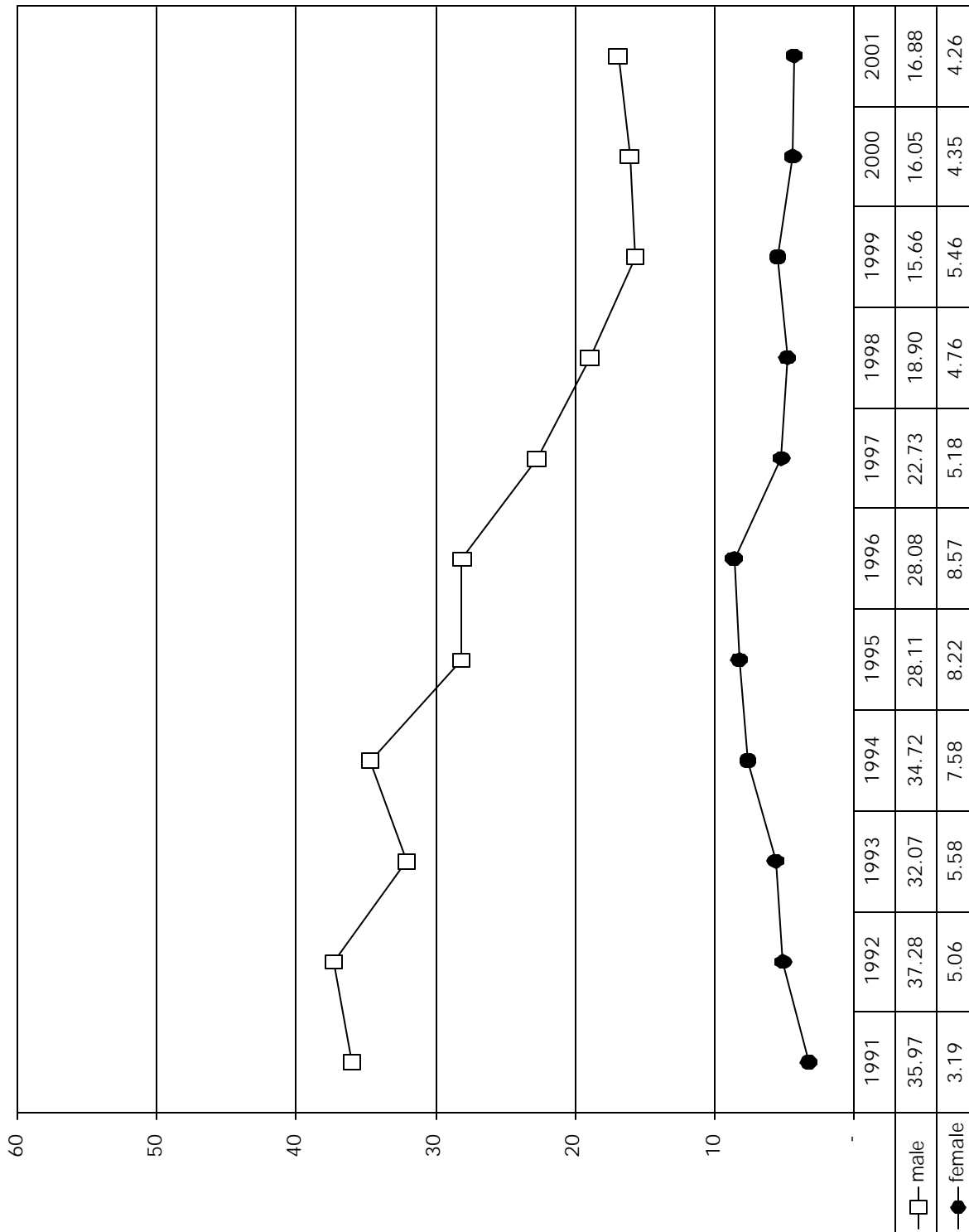


Table 2.5

Persons Testing Newly Positive for HIV by AGE and YEAR - TOTAL, 1996 to 2001

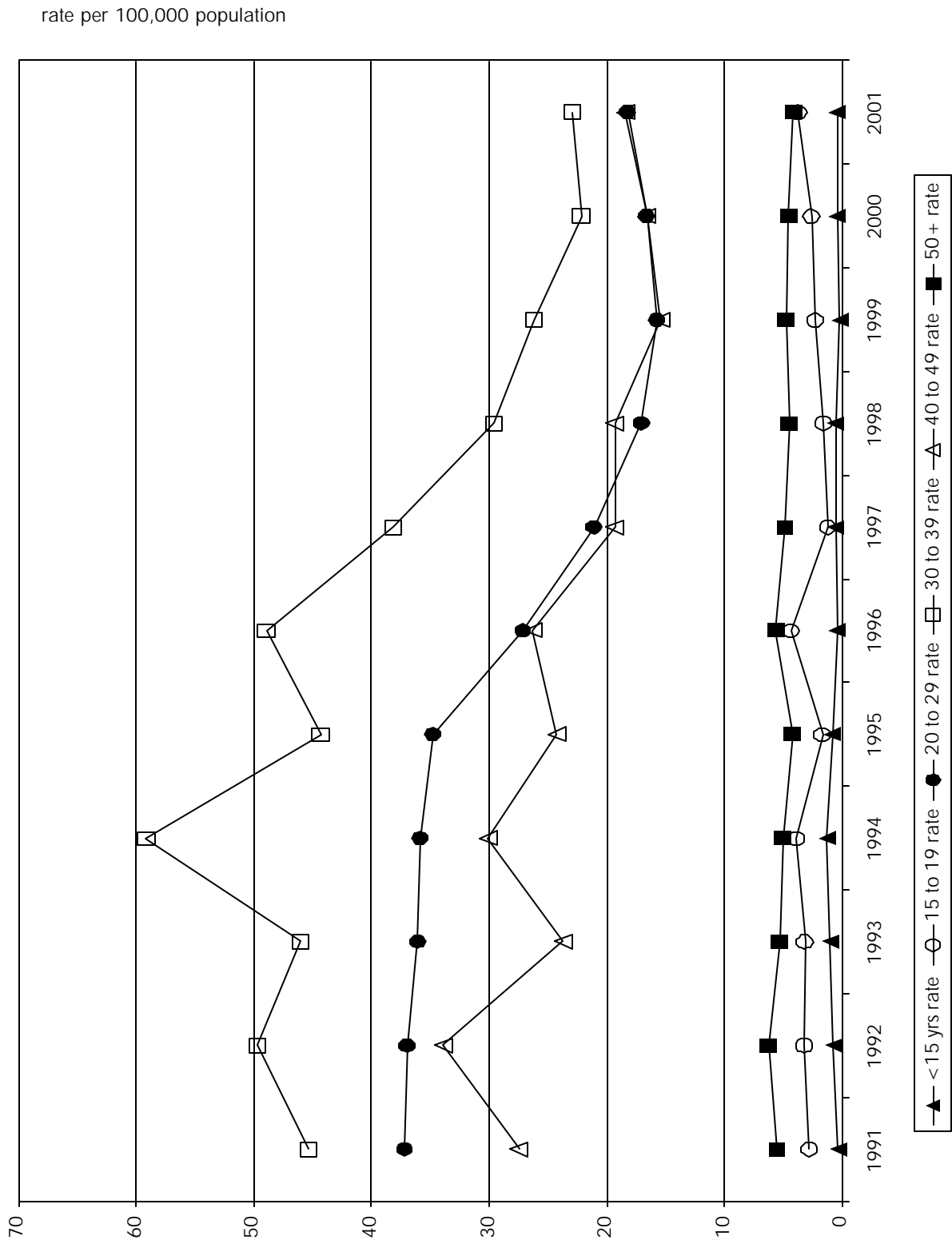
| Age | HIV | 1996 | 1997 | 1998 | 1999 | 2000 | 2001 | TOTAL |
|----------|---------|---------|---------|---------|---------|---------|---------|-----------|
| < 15 yrs | persons | 3 | 4 | 4 | 1 | 3 | 3 | 61 |
| | rate | 0.40 | 0.53 | 0.53 | 0.13 | 0.41 | 0.41 | |
| | tests | 1,016 | 1,681 | 1,422 | 1,348 | 1,253 | 1,191 | 14,979 |
| 15 to 19 | persons | 11 | 3 | 4 | 6 | 7 | 10 | 137 |
| | rate | 4.33 | 1.15 | 1.51 | 2.25 | 2.59 | 3.69 | |
| | tests | 9,580 | 11,307 | 11,113 | 10,815 | 10,462 | 10,007 | 98,069 |
| 20 to 29 | persons | 151 | 118 | 95 | 87 | 90 | 99 | 2,812 |
| | rate | 27.13 | 21.08 | 17.04 | 15.76 | 16.57 | 18.20 | |
| | tests | 51,243 | 50,621 | 50,327 | 49,157 | 48,041 | 47,688 | 508,759 |
| 30 to 39 | persons | 331 | 259 | 200 | 176 | 146 | 150 | 4,331 |
| | rate | 48.91 | 38.08 | 29.55 | 26.16 | 22.11 | 22.88 | |
| | tests | 44,187 | 42,900 | 42,318 | 42,308 | 42,853 | 42,956 | 447,631 |
| 40 to 49 | persons | 160 | 121 | 124 | 101 | 111 | 125 | 2,158 |
| | rate | 26.27 | 19.31 | 19.31 | 15.38 | 16.57 | 18.37 | |
| | tests | 18,436 | 19,033 | 18,864 | 18,836 | 19,402 | 20,069 | 199,155 |
| 50+ | persons | 58 | 52 | 50 | 54 | 54 | 50 | 806 |
| | rate | 5.61 | 4.84 | 4.50 | 4.71 | 4.55 | 4.10 | |
| | tests | 9,938 | 11,000 | 10,586 | 10,970 | 12,018 | 12,446 | 118,818 |
| unknown | persons | | 4 | 5 | 2 | 2 | 3 | 396 |
| | tests | 3,850 | 3,736 | 3,071 | 1,850 | 1,459 | 1,449 | 40,852 |
| total: | persons | 714 | 561 | 482 | 427 | 413 | 440 | 10,701 |
| | rate | 18.39 | 14.17 | 12.02 | 10.55 | 10.15 | 10.74 | |
| | tests | 138,250 | 140,278 | 137,701 | 135,284 | 135,488 | 135,806 | 1,428,263 |

TESTS is the number of HIV tests performed, positive and negative, at the Provincial Laboratory.

RATE is per 100,000 population.

TOTAL column to far right is cumulative from 1985 to year-to-date 2001.

Graph 2.3
Persons Testing Newly Positive for HIV by AGE and YEAR, 1991 to 2001



Graph 2.4
Persons Testing Newly Positive for HIV by RISK CATEGORY and YEAR, 1991 to 2001

number of persons testing newly positive for HIV

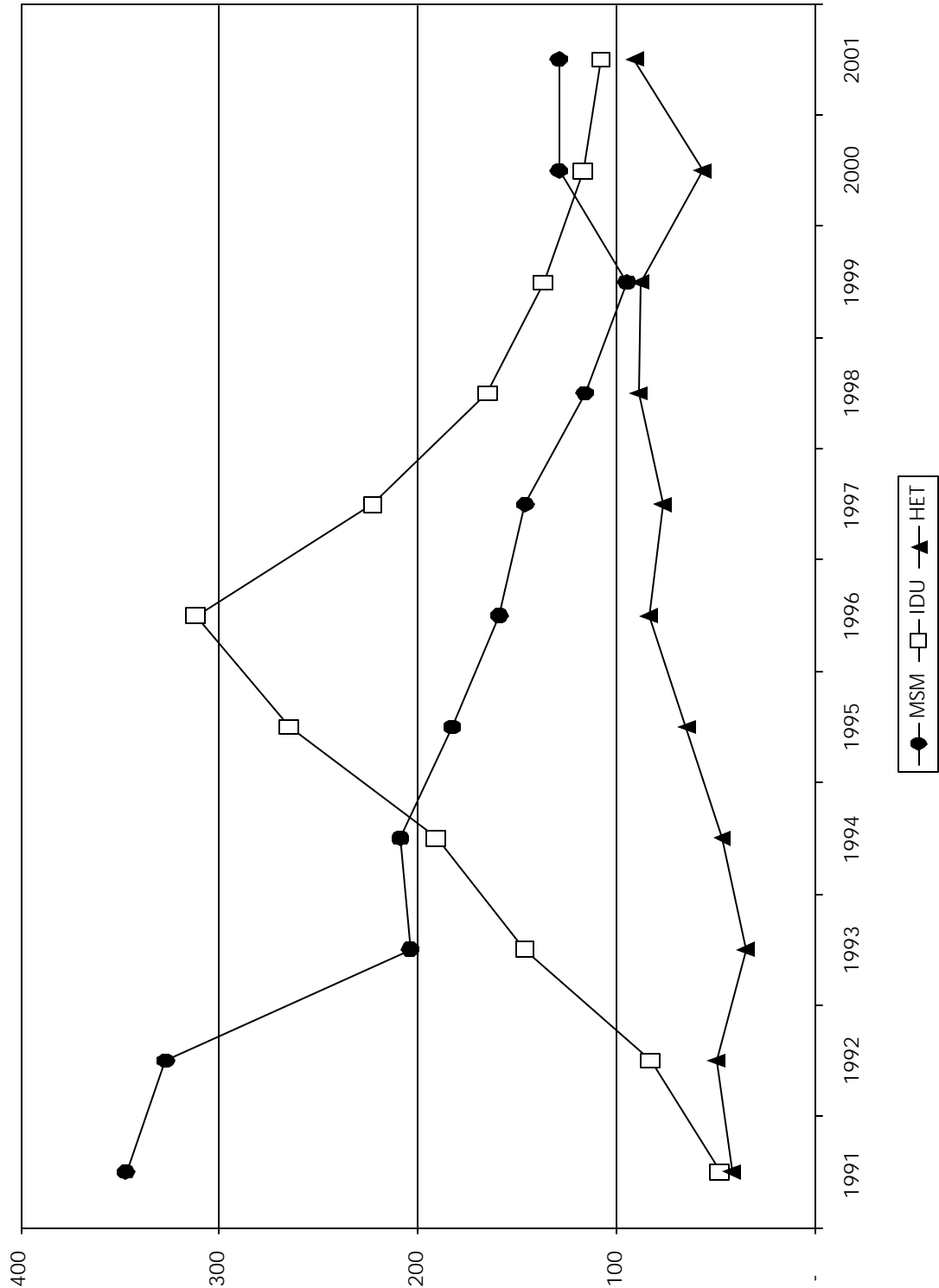


Table 2.6

Persons Testing Newly Positive for HIV by RISK CATEGORY and YEAR - MALES, 1996 to 2001

| Risk Category | HIV | 1996 | 1997 | 1998 | 1999 | 2000 | 2001 | TOTAL |
|------------------------|---------|--------|--------|--------|--------|--------|--------|---------|
| MSM | persons | 159 | 146 | 116 | 95 | 129 | 129 | 4,714 |
| | tests | 4,068 | 3,871 | 3,536 | 3,192 | 3,138 | 2,060 | 55,630 |
| MSM/IDU | persons | 26 | 14 | 6 | 10 | 10 | 16 | 207 |
| | tests | 145 | 74 | 42 | 14 | 19 | 14 | 1,436 |
| IDU | persons | 240 | 168 | 125 | 93 | 91 | 81 | 1,434 |
| | tests | 3,896 | 2,335 | 2,303 | 1,732 | 1,508 | 1,140 | 32,794 |
| heterosexual contact | persons | 45 | 51 | 50 | 57 | 32 | 50 | 537 |
| | tests | 13,878 | 14,017 | 13,463 | 12,975 | 12,272 | 8,476 | 125,294 |
| sex trade worker | persons | 3 | 4 | | 3 | 3 | | 26 |
| | tests | 124 | 85 | 64 | 56 | 43 | 31 | 1,430 |
| sex trade worker/IDU | persons | 7 | 1 | 6 | 1 | 1 | | 38 |
| | tests | 27 | 8 | 7 | 7 | 2 | 1 | 327 |
| hemophiliac | persons | | | | | 1 | | 64 |
| | tests | 40 | 66 | 67 | 64 | 62 | 49 | 899 |
| blood/BP recipient (1) | persons | 3 | 1 | 2 | 2 | 4 | 2 | 59 |
| | tests | 728 | 1,125 | 451 | 231 | 182 | 125 | 11,848 |
| unspecified PE (2) | persons | | | | | | 3 | 27 |
| | tests | 241 | 26 | 71 | 110 | 34 | 29 | 4,259 |
| visa/employ/insurance | persons | | | | | | | 10 |
| | tests | 283 | 347 | 283 | 252 | 252 | 222 | 3,162 |
| occupational EXP (3) | persons | | | 1 | | 1 | | 3 |
| | tests | 566 | 1,245 | 537 | 384 | 780 | 829 | 6,084 |
| unknown | persons | 56 | 60 | 60 | 39 | 46 | 53 | 1,766 |
| | tests | 25,617 | 28,332 | 30,387 | 31,499 | 32,217 | 37,396 | 320,875 |
| other (4) | persons | 2 | | 8 | 14 | 6 | 9 | 55 |
| | tests | 350 | 219 | 161 | 167 | 483 | 672 | 5,893 |
| perinatal <18 mos (5) | persons | 1 | 2 | 1 | | | | 15 |
| delayed testing (6) | persons | 1 | 1 | 2 | 1 | | | 8 |
| | tests | 15 | 35 | 18 | 18 | 5 | 6 | 150 |
| total: | persons | 543 | 448 | 377 | 315 | 324 | 343 | 8,963 |
| | tests | 49,978 | 51,785 | 51,390 | 50,701 | 50,997 | 51,050 | 570,081 |

2001 figures are year-to-date.

TESTS is the number of HIV tests performed, positive and negative, at the Provincial Laboratory.

TOTAL column to far right is cumulative from 1985 to year-to-date 2001.

MSM - men who have sex with men

IDU - injection drug user

visa/employ/insurance - visa/employment/insurance

unspecified PE - unspecified parenteral exposure

blood/BP Recipient - blood or blood product recipient

occupational EXP - occupational exposure

(1), (2), (3), (4), (5), and (6) - refer to FOOTNOTES on page 42

Table 2.7

Persons Testing Newly Positive for HIV by RISK CATEGORY and YEAR - FEMALES, 1996 to 2001

| Risk Category | HIV | 1996 | 1997 | 1998 | 1999 | 2000 | 2001 | TOTAL |
|------------------------|---------|--------|--------|--------|--------|--------|--------|---------|
| WSW | persons | | 2 | | 1 | | 1 | 16 |
| | tests | 515 | 408 | 370 | 327 | 302 | 176 | 4,229 |
| WSW/IDU | persons | 1 | 1 | 1 | | 1 | | 10 |
| | tests | 64 | 34 | 20 | 8 | 7 | 2 | 391 |
| IDU | persons | 70 | 49 | 37 | 43 | 26 | 25 | 434 |
| | tests | 1,600 | 1,004 | 841 | 708 | 537 | 415 | 14,072 |
| heterosexual contact | persons | 39 | 25 | 37 | 31 | 25 | 40 | 322 |
| | tests | 39,054 | 39,493 | 38,818 | 37,666 | 36,221 | 33,160 | 303,793 |
| sex trade worker | persons | 1 | | 1 | 2 | 1 | 1 | 13 |
| | tests | 187 | 96 | 142 | 135 | 103 | 92 | 2,267 |
| sex trade worker/IDU | persons | 41 | 14 | 12 | 12 | 18 | 10 | 201 |
| | tests | 274 | 125 | 59 | 51 | 32 | 15 | 2,663 |
| hemophiliac | persons | | | | | | | 1 |
| | tests | 8 | 17 | 8 | 3 | 4 | 5 | 106 |
| blood/BP recipient (1) | persons | | | 1 | 1 | 1 | | 37 |
| | tests | 1,233 | 1,753 | 635 | 321 | 237 | 151 | 19,406 |
| unspecified PE (2) | persons | | | | | | | 13 |
| | tests | 406 | 17 | 127 | 248 | 56 | 49 | 5,791 |
| visa/employ/insurance | persons | | | | | | | - |
| | tests | 214 | 228 | 228 | 198 | 202 | 205 | 2,473 |
| occupational EXP (3) | persons | | | | | | | - |
| | tests | 1,529 | 2,904 | 1,290 | 980 | 1,706 | 1,698 | 15,094 |
| unknown | persons | 13 | 12 | 6 | 14 | 12 | 11 | 288 |
| | tests | 36,219 | 37,485 | 40,018 | 40,928 | 42,208 | 44,989 | 425,157 |
| other (4) | persons | 1 | | | 7 | 5 | | 17 |
| | tests | 344 | 287 | 217 | 247 | 532 | 735 | 5,793 |
| perinatal <18 mos (5) | persons | | | 1 | | | | 7 |
| delayed testing (6) | persons | 1 | | | | | | 2 |
| | tests | 21 | 29 | 23 | 18 | 13 | 4 | 159 |
| total: | persons | 167 | 103 | 96 | 111 | 89 | 88 | 1,361 |
| | tests | 81,668 | 83,880 | 82,796 | 81,838 | 82,160 | 81,696 | 801,394 |

2001 figures are year-to-date.

TESTS is the number of HIV tests performed, positive and negative, at the Provincial Laboratory.

TOTAL column to far right is cumulative from 1985 to year-to-date 2001

WSW - women who have sex with women

unspecified PE - unspecified parenteral exposure

IDU - injection drug user

blood/BP Recipient - blood or blood product recipient

visa/employ/insurance - visa/employment/insurance

occupational EXP - occupational exposure

(1), (2), (3), (4), (5), and (6) - refer to FOOTNOTES on page 42

Table 2.8

Persons Testing Newly Positive for HIV by RISK CATEGORY and YEAR-GENDER UNKNOWN, 1996 to 2001

| Risk Category | HIV | 1996 | 1997 | 1998 | 1999 | 2000 | 2001 | TOTAL |
|---------------------------|---------|-------|-------|-------|-------|-------|-------|--------|
| MSM or WSW | persons | | 1 | 1 | | | | 99 |
| | tests | 100 | 80 | 66 | 44 | 51 | 33 | 1,196 |
| MSM/IDU or WSW/IDU | persons | | | | | | 1 | 5 |
| | tests | 9 | 1 | 2 | 2 | | | 51 |
| IDU | persons | 2 | 6 | 3 | 1 | | 2 | 34 |
| | tests | 167 | 82 | 58 | 34 | 14 | 21 | 1,298 |
| heterosexual contact | persons | | 1 | 2 | | | 1 | 19 |
| | tests | 2,042 | 1,518 | 1,316 | 964 | 716 | 841 | 12,564 |
| sex trade worker | persons | | | | | | | 1 |
| | tests | 4 | 5 | 5 | - | 2 | 2 | 112 |
| sex trade worker/IDU | persons | | | | | | | 3 |
| | tests | 6 | 2 | | 1 | | 1 | 69 |
| hemophilic | persons | | | | | | | 3 |
| | tests | | 1 | 3 | - | 1 | 1 | 24 |
| blood/BP recipient (1) | persons | | | | | | | 2 |
| | tests | 88 | 120 | 36 | 17 | 10 | 15 | 1,673 |
| unspecified PE (2) | persons | | | | | | | 2 |
| | tests | 39 | 3 | 9 | 10 | 1 | 3 | 426 |
| visa/employ /insurance | persons | | | | | | | - |
| | tests | 19 | 16 | 16 | 10 | 2 | 21 | 165 |
| occupational EXP (3) | persons | | | | | | | - |
| | tests | 133 | 177 | 63 | 50 | 54 | 83 | 812 |
| unknown | persons | 2 | 2 | 3 | | | 5 | 208 |
| | tests | 3,946 | 2,577 | 1,916 | 1,584 | 1,373 | 1,825 | 37,688 |
| other (4) | persons | | | | | | | 1 |
| | tests | 44 | 27 | 25 | 28 | 105 | 214 | 686 |
| perinatal <18 mos (5) | persons | | | | | | | - |
| delayed testing (6) | persons | | | | | | | - |
| | tests | 7 | 4 | | 1 | 2 | | 24 |
| total: | persons | 4 | 10 | 9 | 1 | - | 9 | 377 |
| | tests | 6,604 | 4,613 | 3,515 | 2,745 | 2,331 | 3,060 | 56,788 |

2001 figures are year-to-date.

TESTS is the number of HIV tests performed, positive and negative, at the Provincial Laboratory.

TOTAL column to far right is cumulative from 1985 to year-to-date 2001.

WSW - women who have sex with women

MSM - men who have sex with men

IDU - injection drug user

visa/employ/insurance - visa/employment/insurance

unspecified PE - unspecified parenteral exposure

blood/BP Recipient - blood or blood product recipient

occupational EXP - occupational exposure

Table 2.9

Persons Testing Newly Positive for HIV by RISK CATEGORY AND YEAR - TOTAL, 1996 to 2001

| Risk Category | HIV | 1996 | 1997 | 1998 | 1999 | 2000 | 2001 | TOTAL |
|------------------------|---------|---------|---------|---------|---------|---------|---------|-----------|
| MSM or WSW | persons | 159 | 149 | 117 | 96 | 129 | 130 | 4,829 |
| | tests | 4,683 | 4,359 | 3,972 | 3,563 | 3,491 | 2,269 | 61,055 |
| MSM/IDU or WSW/IDU | persons | 27 | 15 | 7 | 10 | 11 | 17 | 222 |
| | tests | 218 | 109 | 64 | 24 | 26 | 16 | 1,878 |
| IDU | persons | 312 | 223 | 165 | 137 | 117 | 108 | 1,902 |
| | tests | 5,663 | 3,421 | 3,202 | 2,474 | 2,059 | 1,576 | 48,164 |
| heterosexual contact | persons | 84 | 77 | 89 | 88 | 57 | 91 | 878 |
| | tests | 54,974 | 55,028 | 53,597 | 51,605 | 49,209 | 42,477 | 441,651 |
| sex trade worker | persons | 4 | 4 | 1 | 5 | 4 | 1 | 40 |
| | tests | 315 | 186 | 211 | 191 | 148 | 125 | 3,809 |
| sex trade worker/IDU | persons | 48 | 15 | 18 | 13 | 19 | 10 | 242 |
| | tests | 307 | 135 | 66 | 59 | 34 | 17 | 3,059 |
| hemophiliac | persons | | | | | | - | 67 |
| | tests | 48 | 84 | 78 | 67 | 67 | 55 | 1,029 |
| blood/BP recipient (1) | persons | 3 | 1 | 3 | 3 | 5 | 2 | 98 |
| | tests | 2,049 | 2,998 | 1,122 | 569 | 429 | 291 | 32,927 |
| unspecified PE (2) | persons | | | | | | 3 | 42 |
| | tests | 686 | 46 | 207 | 368 | 91 | 81 | 10,476 |
| visa/employ/insurance | persons | | | | | | - | 10 |
| | tests | 516 | 591 | 527 | 460 | 456 | 448 | 5,800 |
| occupational EXP (3) | persons | | | 1 | - | 1 | - | 3 |
| | tests | 2,228 | 4,326 | 1,890 | 1,414 | 2,540 | 2,610 | 21,990 |
| unknown | persons | 71 | 74 | 69 | 53 | 58 | 69 | 2,262 |
| | tests | 65,782 | 68,394 | 72,321 | 74,011 | 75,798 | 84,210 | 783,720 |
| other (4) | persons | 3 | | 8 | 21 | 11 | 9 | 73 |
| | tests | 738 | 533 | 403 | 442 | 1,120 | 1,621 | 12,372 |
| perinatal <18 mos (5) | persons | 1 | 2 | 2 | - | - | - | 22 |
| delayed testing (6) | persons | 2 | 1 | 2 | 1 | - | - | 10 |
| | tests | 43 | 68 | 41 | 37 | 20 | 10 | 333 |
| total: | persons | 714 | 561 | 482 | 427 | 413 | 440 | 10,701 |
| | tests | 138,250 | 140,278 | 137,701 | 135,284 | 135,488 | 135,806 | 1,428,263 |

2001 figures are year-to-date.

TESTS is the number of HIV tests performed, positive and negative, at the Provincial Laboratory.

TOTAL column to far right is cumulative from 1985 to year-to-date 2001.

WSW - women who have sex with women

MSM - men who have sex with men

IDU - injection drug user

visa/employ/insurance - visa/employment/insurance

unspecified PE - unspecified parenteral exposure

blood/BP Recipient - blood or blood product recipient

occupational EXP - occupational exposure

Table 2.10

Persons Testing Newly Positive for HIV by ETHNICITY and YEAR - MALES, 1996 to 2001

| Ethnicity | HIV | 1996 | 1997 | 1998 | 1999 | 2000 | 2001 | TOTAL |
|---------------|---------|--------|--------|--------|--------|--------|--------|---------|
| Caucasian | persons | 334 | 286 | 228 | 205 | 212 | 242 | 1,819 |
| | tests | 19,480 | 22,083 | 22,755 | 21,729 | 20,976 | 17,071 | 135,315 |
| First Nations | persons | 66 | 54 | 35 | 33 | 33 | 34 | 307 |
| | tests | 1,505 | 1,791 | 1,948 | 1,880 | 1,757 | 1,572 | 11,469 |
| Asian | persons | 18 | 16 | 12 | 12 | 20 | 17 | 107 |
| | tests | 909 | 1,364 | 1,858 | 2,353 | 1,729 | 1,432 | 10,122 |
| South Asian | persons | 11 | 4 | 14 | 8 | 4 | | 52 |
| | tests | 244 | 323 | 203 | 193 | 302 | 281 | 1,759 |
| Inuit | persons | | 1 | | 1 | | | 2 |
| | tests | 3 | 7 | 14 | 8 | 11 | 4 | 54 |
| Metis | persons | 1 | | 4 | 3 | | 3 | 15 |
| | tests | 75 | 90 | 147 | 159 | 113 | 100 | 729 |
| Black | persons | 10 | 9 | 15 | 11 | 18 | 20 | 92 |
| | tests | 304 | 345 | 335 | 323 | 326 | 287 | 2,083 |
| Hispanic | persons | 14 | 12 | 13 | 11 | 18 | 12 | 98 |
| | tests | 259 | 359 | 362 | 385 | 341 | 270 | 2,133 |
| unknown | persons | 89 | 66 | 56 | 31 | 19 | 15 | 388 |
| | tests | 27,199 | 25,423 | 23,768 | 23,671 | 25,442 | 30,033 | 187,500 |
| total: | persons | 543 | 448 | 377 | 315 | 324 | 343 | 2,880 |
| | tests | 49,978 | 51,785 | 51,390 | 50,701 | 50,997 | 51,050 | 351,164 |

2001 figures are year-to-date.

TESTS is the number of HIV tests performed, positive and negative, at the Provincial Laboratory.

Ethnicity data was collected beginning 1995.

Table 2.11

Persons Testing Newly Positive for HIV by ETHNICITY and YEAR - FEMALES, 1996 to 2001

| Ethnicity | HIV | 1996 | 1997 | 1998 | 1999 | 2000 | 2001 | TOTAL |
|---------------|---------|--------|--------|--------|--------|--------|--------|---------|
| Caucasian | persons | 78 | 50 | 42 | 48 | 40 | 40 | 373 |
| | tests | 25,274 | 28,686 | 29,167 | 28,387 | 27,024 | 22,354 | 174,783 |
| First Nations | persons | 54 | 28 | 30 | 40 | 22 | 32 | 239 |
| | tests | 2,765 | 3,043 | 3,253 | 3,338 | 3,260 | 2,946 | 20,200 |
| Asian | persons | 1 | 1 | 1 | 1 | 6 | 1 | 12 |
| | tests | 2,095 | 3,400 | 4,706 | 5,686 | 4,158 | 3,169 | 24,243 |
| South Asian | persons | | 3 | 5 | 2 | 2 | | 17 |
| | tests | 398 | 467 | 335 | 351 | 517 | 456 | 2,862 |
| Inuit | persons | | | | | | | - |
| | tests | 13 | 11 | 18 | 12 | 15 | 11 | 91 |
| Metis | persons | 1 | 3 | | 2 | | | 7 |
| | tests | 107 | 105 | 162 | 184 | 123 | 94 | 835 |
| Black | persons | 7 | 3 | 6 | 8 | 8 | 14 | 51 |
| | tests | 205 | 243 | 277 | 258 | 250 | 216 | 1,555 |
| Hispanic | persons | 3 | 1 | 1 | 1 | 2 | | 9 |
| | tests | 173 | 218 | 205 | 239 | 267 | 227 | 1,424 |
| unknown | persons | 23 | 14 | 11 | 9 | 9 | 1 | 102 |
| | tests | 50,638 | 47,707 | 44,673 | 43,383 | 46,546 | 52,223 | 342,103 |
| total: | persons | 167 | 103 | 96 | 111 | 89 | 88 | 810 |
| | tests | 81,668 | 83,880 | 82,796 | 81,838 | 82,160 | 81,696 | 568,096 |

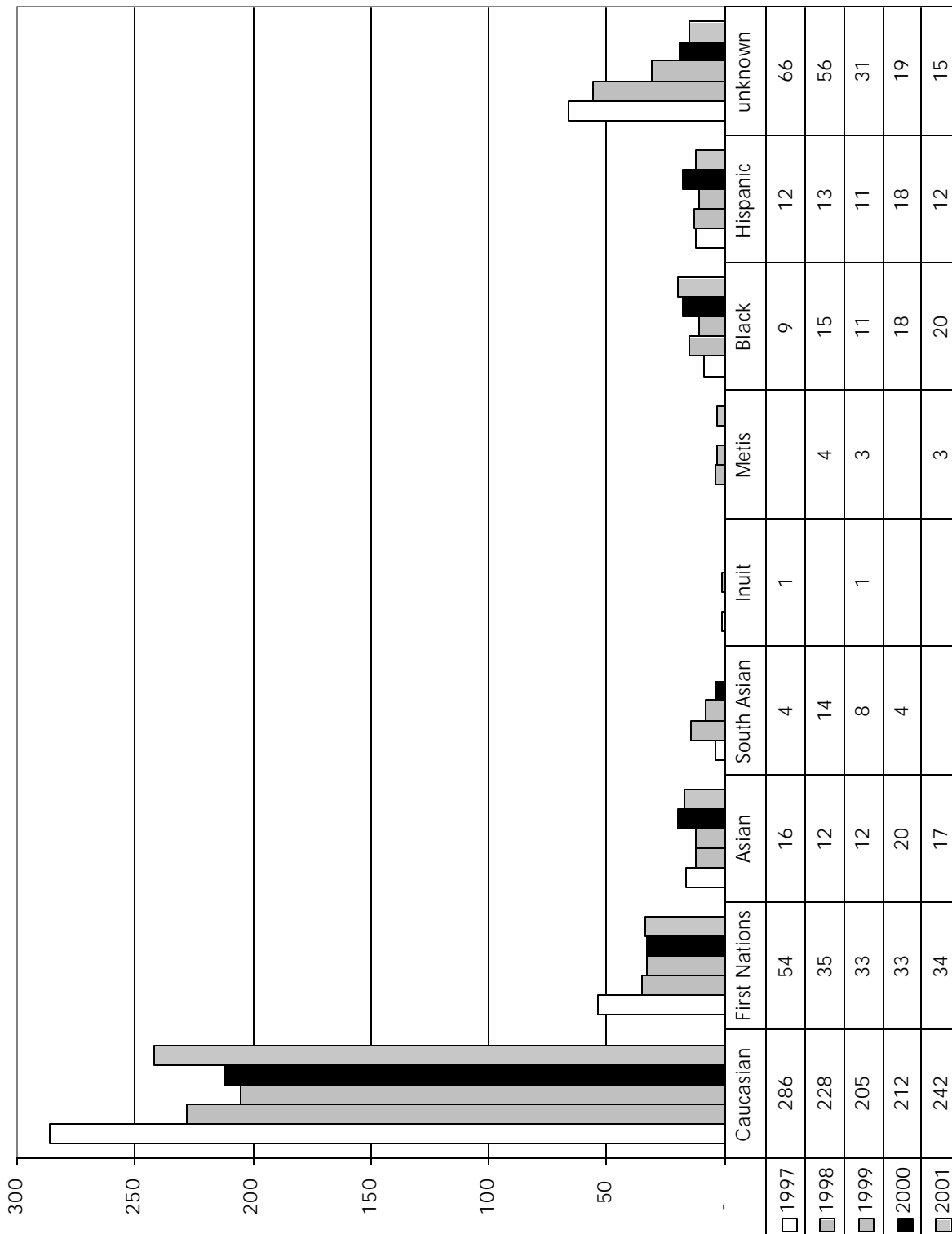
2001 figures are year-to-date.

TESTS is the number of HIV tests performed, positive and negative, at the Provincial Laboratory.

Ethnicity data was collected beginning 1995.

Graph 2.5

Persons Testing Newly Positive for HIV by ETHNICITY and YEAR - MALES, 1997 to 2001



Graph 2.6

Persons Testing Newly Positive for HIV by ETHNICITY and YEAR - FEMALES, 1997 to 2001

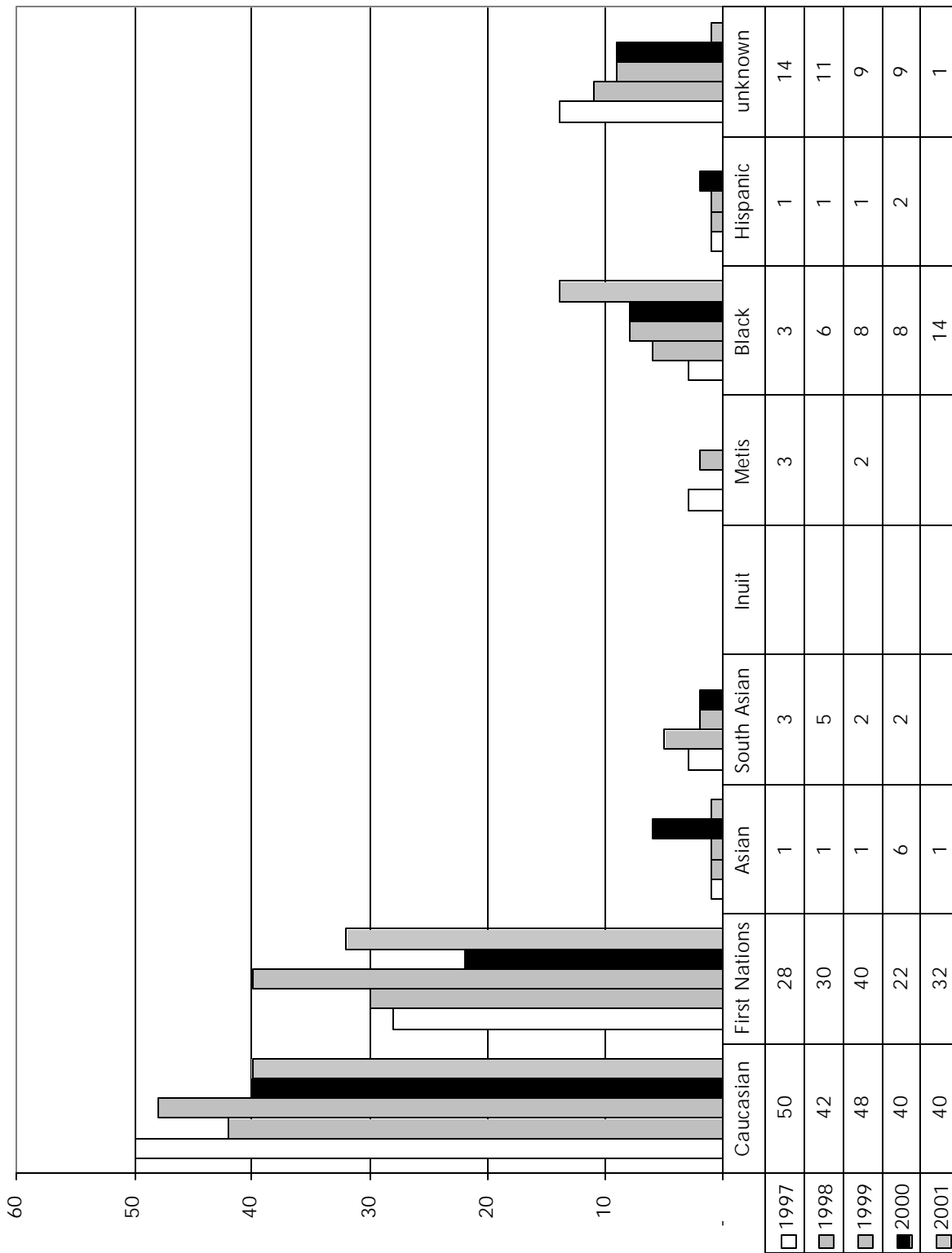


Table 2.12

Persons Testing Newly Positive for HIV by ETHNICITY and YEAR - GENDER UNKNOWN,

| Ethnicity | HIV | 1996 | 1997 | 1998 | 1999 | 2000 | 2001 | TOTAL |
|---------------|---------|-------|-------|-------|-------|-------|-------|--------|
| Caucasian | persons | 1 | 4 | 3 | | | 6 | 15 |
| | tests | 1,145 | 956 | 949 | 662 | 591 | 731 | 6,250 |
| First Nations | persons | 1 | 1 | 2 | 1 | - | 1 | 7 |
| | tests | 91 | 78 | 67 | 76 | 85 | 56 | 520 |
| Asian | persons | | | | | | | - |
| | tests | 60 | 63 | 92 | 56 | 40 | 55 | 447 |
| South Asian | persons | | 1 | | | | | 1 |
| | tests | 18 | 21 | 16 | 8 | 10 | 16 | 175 |
| Inuit | persons | | | | | | | - |
| | tests | | | | - | | | - |
| Metis | persons | | | | | | | - |
| | tests | | 3 | 7 | 4 | 3 | 2 | 20 |
| Black | persons | | | 1 | | | | 1 |
| | tests | 14 | 16 | 16 | 11 | 6 | 11 | 87 |
| Hispanic | persons | | 1 | | | | | 1 |
| | tests | 5 | 8 | 9 | 3 | 7 | 7 | 43 |
| unknown | persons | 2 | 3 | 3 | | | 2 | 12 |
| | tests | 5,271 | 3,468 | 2,359 | 1,925 | 1,589 | 2,182 | 26,343 |
| total: | persons | 4 | 10 | 9 | 1 | - | 9 | 37 |
| | tests | 6,604 | 4,613 | 3,515 | 2,745 | 2,331 | 3,060 | 33,885 |

2001 figures are year-to-date.

TESTS is the number of HIV tests performed, positive and negative, at the Provincial Laboratory.

Ethnicity data was collected beginning in 1995.

Table 2.13

Persons Testing Newly Positive for HIV by ETHNICITY and YEAR - TOTAL, 1996 to 2001

| Ethnicity | HIV | 1996 | 1997 | 1998 | 1999 | 2000 | 2001 | TOTAL |
|---------------|---------|---------|---------|---------|---------|---------|---------|---------|
| Caucasian | persons | 413 | 340 | 273 | 253 | 252 | 288 | 2,207 |
| | tests | 45,899 | 51,725 | 52,871 | 50,778 | 48,591 | 40,156 | 316,348 |
| First Nations | persons | 121 | 83 | 67 | 74 | 55 | 67 | 553 |
| | tests | 4,361 | 4,912 | 5,268 | 5,294 | 5,102 | 4,574 | 32,189 |
| Asian | persons | 19 | 17 | 13 | 13 | 26 | 18 | 119 |
| | tests | 3,064 | 4,827 | 6,656 | 8,095 | 5,927 | 4,656 | 34,812 |
| South Asian | persons | 11 | 8 | 19 | 10 | 6 | - | 70 |
| | tests | 660 | 811 | 554 | 552 | 829 | 753 | 4,796 |
| Inuit | persons | - | 1 | - | 1 | - | - | 2 |
| | tests | 16 | 18 | 32 | 20 | 26 | 15 | 145 |
| Metis | persons | 2 | 3 | 4 | 5 | - | 3 | 22 |
| | tests | 182 | 198 | 316 | 347 | 239 | 196 | 1,584 |
| Black | persons | 17 | 12 | 22 | 19 | 26 | 34 | 144 |
| | tests | 523 | 604 | 628 | 592 | 582 | 514 | 3,725 |
| Hispanic | persons | 17 | 14 | 14 | 12 | 20 | 12 | 108 |
| | tests | 437 | 585 | 576 | 627 | 615 | 504 | 3,600 |
| unknown | persons | 114 | 83 | 70 | 40 | 28 | 18 | 502 |
| | tests | 83,108 | 76,598 | 70,800 | 68,979 | 73,577 | 84,438 | 555,946 |
| total: | persons | 714 | 561 | 482 | 427 | 413 | 440 | 3,727 |
| | tests | 138,250 | 140,278 | 137,701 | 135,284 | 135,488 | 135,806 | 953,145 |

2001 figures are year-to-date.

TESTS is the number of HIV tests performed, positive and negative, at the Provincial Laboratory.

Ethnicity data was collected beginning in 1995.

Table 2.14
**Persons Testing Newly Positive for HIV by HEALTH REGION* and YEAR,
 1996 to 2001**

| Health Region | HIV | 1996 | 1997 | 1998 | 1999 | 2000 | 2001 | TOTAL |
|--------------------------|---------|--------|--------|--------|--------|--------|--------|---------|
| Burnaby | persons | 19 | 17 | 9 | 8 | 15 | 13 | 187 |
| | rate | 10.16 | 9.00 | 4.75 | 4.17 | 7.80 | 6.70 | |
| | tests | 5,733 | 5,808 | 5,680 | 6,285 | | | 45,718 |
| Capital | persons | 36 | 24 | 28 | 16 | 27 | 36 | 445 |
| | rate | 10.85 | 7.17 | 8.35 | 4.77 | 8.06 | 10.74 | |
| | tests | 11,934 | 12,148 | 14,004 | 11,363 | 11,365 | 11,554 | 118,209 |
| Cariboo | persons | 3 | 2 | 1 | | 2 | 2 | 22 |
| | rate | 4.09 | 2.64 | 1.30 | | 2.59 | 2.57 | |
| | tests | 1,738 | 1,979 | 1,901 | 1,861 | 1,729 | 1,734 | 16,192 |
| Central Fraser Valley | persons | | | | | | | 81 |
| | rate | | | | | | | |
| | tests | | | | | | | 12,122 |
| Central Vancouver Island | persons | 14 | 19 | 10 | 12 | 13 | 12 | 172 |
| | rate | 6.00 | 7.94 | 4.13 | 4.92 | 5.30 | 4.85 | |
| | tests | 6,948 | 7,347 | 7,094 | 6,925 | 6,917 | 7,229 | 65,928 |
| Coast Garibaldi | persons | 7 | 5 | 3 | 3 | 2 | 5 | 52 |
| | rate | 9.55 | 6.55 | 3.83 | 3.76 | 2.49 | 6.23 | |
| | tests | 2,462 | 2,416 | 2,384 | 2,293 | 2,227 | 2,381 | 21,286 |
| East Kootenay | persons | 2 | 2 | 1 | 3 | 1 | | 18 |
| | rate | 2.53 | 2.49 | 1.23 | 3.70 | 1.21 | | |
| | tests | 1,360 | 1,551 | 1,393 | 1,400 | 1,286 | 1,228 | 11,924 |
| Fraser Valley | persons | 17 | 14 | 17 | 8 | 22 | 12 | 164 |
| | rate | 7.35 | 5.93 | 7.11 | 3.31 | 9.05 | 4.91 | |
| | tests | 6,322 | 7,634 | 7,574 | 7,404 | 7,286 | 7,371 | 63,423 |
| Kootenay Boundary | persons | 10 | 2 | 1 | 1 | 1 | 5 | 39 |
| | rate | 12.25 | 2.43 | 1.21 | 1.22 | 1.21 | 6.04 | |
| | tests | 1,861 | 2,011 | 1,860 | 1,755 | 1,792 | 1,750 | 17,292 |
| North Okanagan | persons | 4 | 4 | 4 | 1 | 5 | 2 | 39 |
| | rate | 3.51 | 3.43 | 3.39 | 0.84 | 4.19 | 1.65 | |
| | tests | 2,639 | 2,848 | 2,772 | 2,658 | 2,619 | 2,628 | 23,887 |
| North Shore | persons | 13 | 8 | 11 | 8 | 6 | 9 | 158 |
| | rate | 7.35 | 4.48 | 6.11 | 4.42 | 3.33 | 5.00 | |
| | tests | 4,847 | 5,157 | 5,216 | 4,875 | 4,875 | 5,030 | 52,138 |
| North West | persons | 2 | 1 | 2 | 2 | 1 | 1 | 30 |
| | rate | 2.22 | 1.09 | 2.18 | 2.19 | 1.09 | 1.09 | |
| | tests | 2,561 | 2,938 | 2,647 | 2,505 | 2,381 | 2,519 | 23,567 |

2001 figures are year-to-date.

TESTS is the number of HIV tests performed, positive and negative, at the Provincial Laboratory.

RATE is per 100,000 population.

TOTAL column to far right is cumulative from 1989 to year-to-date 2001.

CENTRAL FRASER VALLEY: As of 1995, any HIV positive test reports that fall within the areas previously served by the Central Fraser Valley Health Unit will now be designated to the following health jurisdictions: Mission to Fraser Valley; Maple Ridge and Pitt Meadows to Simon Fraser; and Langley to South Fraser.

*HEALTH REGION - An HIV positive test report is designated to the appropriate HEALTH REGION according to the location of the physician/clinic site where the person tested.

Table 2.14 (continued)

Persons Testing Newly Positive for HIV by HEALTH REGION* and YEAR, 1996 to 2001

| Health Region | HIV | 1996 | 1997 | 1998 | 1999 | 2000 | 2001 | TOTAL |
|----------------------|---------|---------|---------|---------|---------|---------|---------|-----------|
| Northern Interior | persons | 2 | 4 | 2 | 4 | 3 | 9 | 64 |
| | rate | 1.55 | 3.03 | 1.50 | 3.00 | 2.24 | 6.68 | |
| | tests | 4,034 | 4,099 | 3,981 | 3,700 | 3,957 | 3,791 | 40,775 |
| Okanagan Similkameen | persons | 12 | 6 | 11 | 6 | 13 | 8 | 130 |
| | rate | 5.44 | 2.65 | 4.78 | 2.60 | 5.58 | 3.35 | |
| | tests | 5,830 | 5,647 | 5,616 | 5,619 | 5,595 | 5,907 | 53,725 |
| Peace Liard | persons | 2 | 1 | | | 2 | | 11 |
| | rate | 3.09 | 1.53 | | | 3.02 | | |
| | tests | 1,723 | 1,757 | 1,732 | 1,606 | 1,651 | 1,696 | 14,721 |
| Richmond | persons | 8 | 5 | 7 | | | 1 | 78 |
| | rate | 5.16 | 3.15 | 4.31 | | | 0.60 | |
| | tests | 3,631 | 3,613 | 3,428 | 3,613 | | | 26,162 |
| Simon Fraser | persons | 40 | 36 | 22 | 20 | 30 | 25 | 347 |
| | rate | 13.22 | 11.63 | 6.97 | 6.21 | 9.22 | 7.71 | |
| | tests | 9,742 | 9,967 | 10,154 | 10,053 | 16,717 | 17,248 | 103,680 |
| South Fraser | persons | 41 | 51 | 31 | 22 | 19 | 35 | 338 |
| | rate | 7.55 | 9.18 | 5.49 | 3.82 | 3.30 | 6.04 | |
| | tests | 12,546 | 15,505 | 15,565 | 15,185 | 15,492 | 16,122 | 125,434 |
| Thompson | persons | 5 | 4 | 10 | 2 | 6 | 10 | 72 |
| | rate | 3.83 | 3.00 | 7.38 | 1.46 | 4.36 | 7.23 | |
| | tests | 4,017 | 4,145 | 4,095 | 4,138 | 4,127 | 4,187 | 37,183 |
| Upper Island | persons | 8 | 2 | 4 | 2 | 3 | 2 | 47 |
| | rate | 6.75 | 1.65 | 3.26 | 1.63 | 2.44 | 1.63 | |
| | tests | 3,950 | 3,983 | 3,910 | 3,486 | 3,296 | 3,246 | 35,003 |
| Vancouver | persons | 469 | 352 | 307 | 308 | 242 | 253 | 5,619 |
| | rate | 85.86 | 63.30 | 54.45 | 53.96 | 42.03 | 43.21 | |
| | tests | 41,087 | 37,542 | 36,356 | 34,430 | 38,026 | 36,326 | 422,029 |
| unknown | persons | | 2 | 1 | 1 | | | 23 |
| | tests | 3,285 | 2,183 | 339 | 4,130 | 4,150 | 3,859 | 26,526 |
| total: | persons | 714 | 561 | 482 | 427 | 413 | 440 | 8,136 |
| | rate | 18.39 | 14.17 | 12.02 | 10.55 | 10.15 | 10.74 | |
| | tests | 138,250 | 140,278 | 137,701 | 135,284 | 135,488 | 135,806 | 1,356,924 |

2001 figures are year-to-date.

TESTS is the number of HIV tests performed, positive and negative, at the Provincial Laboratory.

RATE is per 100,000 population.

TOTAL column to far right is cumulative from 1989 to year-to-date 2001.

*HEALTH REGION - An HIV positive test report is designated to the appropriate HEALTH REGION according to the location of the physician/clinic site where the person tested.

Table 2.15

Persons Testing Newly Positive for HIV by SPECIMEN SOURCE and YEAR, 1996 to 2001

| Specimen Source | HIV | 1996 | 1997 | 1998 | 1999 | 2000 | 2001 | TOTAL |
|--------------------------|---------|---------|---------|---------|---------|---------|---------|-----------|
| private physician | persons | 393 | 335 | 284 | 233 | 256 | 292 | 5,019 |
| | tests | 109,830 | 109,244 | 104,029 | 102,851 | 105,750 | 105,634 | 1,053,047 |
| hospital | persons | 110 | 73 | 58 | 52 | 84 | 77 | 1,493 |
| | tests | 17,612 | 19,147 | 21,069 | 21,407 | 20,728 | 21,477 | 188,461 |
| STD/ATEC Clinic (7) | persons | 22 | 21 | 15 | 21 | 8 | 19 | 333 |
| | tests | 3,066 | 3,164 | 3,024 | 2,950 | 3,504 | 1,880 | 35,436 |
| STD/AIDS Outreach (8) | persons | 82 | 57 | 49 | 47 | 44 | 32 | 802 |
| | tests | 3,023 | 3,101 | 3,358 | 3,135 | 2,478 | 1,981 | 32,206 |
| health unit | persons | 13 | 13 | 14 | 4 | 1 | 3 | 153 |
| | tests | 4,712 | 5,557 | 6,110 | 4,919 | 3,004 | 3,436 | 45,935 |
| Red Cross referral | persons | | | | | | | 7 |
| | tests | 1 | | | | | | 88 |
| unknown | persons | | | | 2 | 1 | | 7 |
| | tests | 6 | 65 | 111 | 22 | 24 | 1,398 | 1,751 |
| VIDUS study (9) | persons | 69 | 32 | 16 | 18 | 13 | 1 | 149 |
| downtown clinics (10) | persons | 25 | 30 | 21 | 36 | 2 | 11 | 125 |
| corrections (11) | persons | | | 25 | 14 | 4 | 5 | 48 |
| total: | persons | 714 | 561 | 482 | 427 | 413 | 440 | 8,136 |
| | tests | 138,250 | 140,278 | 137,701 | 135,284 | 135,488 | 135,806 | 1,356,924 |

2001 figures are year-to-date .

TESTS is the number of HIV tests performed, positive and negative, at the Provincial Laboratory.

TOTAL column to far right is cumulative from 1989 to year-to-date 2001.

Any positive test result for HIV from the UBC Virology Laboratory or the BC Biomedical Ltd. is referred to the Provincial Laboratory at the BC Centre for Disease Control Society for confirmatory testing

| Specimen Source | HIV | 1994 | 1995 | 1996 | 1997 | 1998 | 1999 | TOTAL |
|------------------------------|-------|-------|-------|-------|-------|-------|-------|--------|
| UBC Virology Laboratory (12) | tests | 2,789 | 2,916 | 3,956 | 3,846 | 3,413 | 3,396 | 30,094 |
| BC Biomedical Ltd. (13) | tests | 1,441 | 1,654 | 1,694 | 1,371 | 1,152 | 1,241 | 15,224 |
| total: | tests | 4,230 | 4,570 | 5,650 | 5,217 | 4,565 | 4,637 | 45,318 |

TESTS is the number of HIV tests performed, positive and negative, at the Provincial Laboratory.

TOTAL column to far right is cumulative from 1989 to year end 1999.

VIDUS Study - Vancouver Injection Drug User Study

UBC Virology Laboratory - University of British Columbia Virology Laboratory

(7), (8), (9), (10), (11), (12), and (13) - refer to FOOTNOTES on page 42

Perinatal Transmission of HIV

Since HIV antibody status is not diagnostic prior to 18 months of age, HIV infections documented in this age group are confirmed through direct identification of HIV by PCR, p24 antigen testing and/or HIV culture on two or more consecutive assays.

Table 2.16 has been produced to more accurately indicate the number of perinatal HIV infections in British Columbia. The first row (maternal AB) indicates those < 18 months of age with maternal antibodies for HIV whereas the second row (true infection) indicates those < 18 months of age with true HIV infections.

Table 2.16

Maternal Antibody Positive for HIV vs True HIV Infection - < 18 MONTHS OF AGE, 1992 to 2001

| HIV | 1992 | 1993 | 1994 | 1995 | 1996 | 1997 | 1998 | 1999 | 2000 | 2001 | TOTAL |
|----------------|------|------|------|------|------|------|------|------|------|------|-------|
| maternal AB | 10 | 15 | 17 | 24 | 19 | 17 | 16 | 21 | | | 161 |
| true infection | 2 | 4 | 5 | 2 | 1 | 2 | 2 | - | | | 22 |

maternal AB - maternal antibody

TOTAL column to far right is cumulative from 1989 to year-to-date 2001.

Since pregnancy is not an HIV risk category, a separate table (Table 2.17) has been prepared to monitor the number of pregnant women whose HIV test requisition stated that the test was being done as a prenatal assessment and of these women, the number who have tested positive for HIV. This does not include pregnant women tested for HIV whose requisition indicated a different risk or reason for testing, e.g. injection drug user.

Please note that the pregnant women who have tested positive for HIV are included in Table 2.7 - Persons Testing Newly Positive for HIV by Risk Category in accordance to their risk (e.g.

Table 2.17

Women Testing Newly Positive for HIV - PRENATAL SCREENING, 1996 to 2001

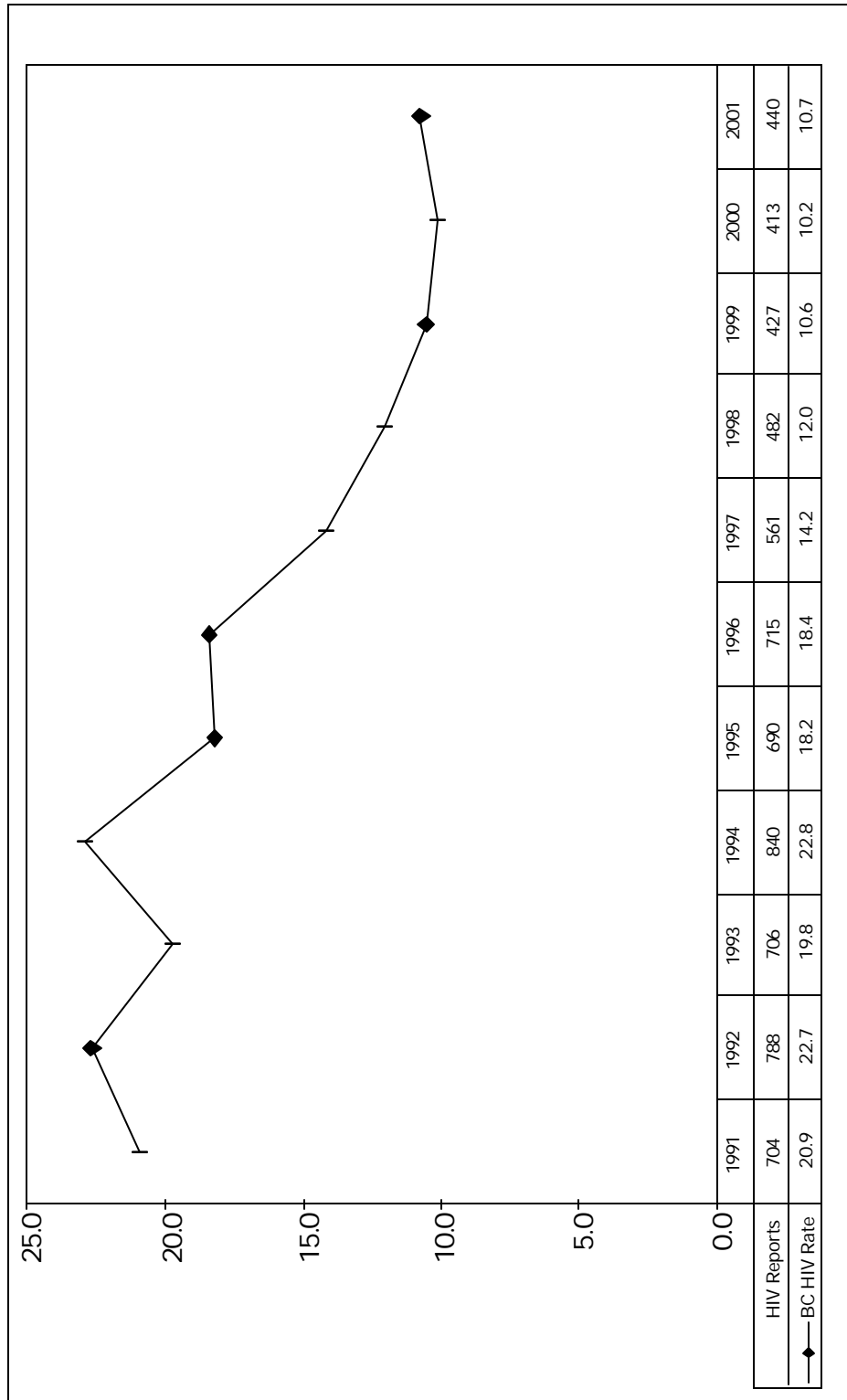
| Gender | HIV | 1996 | 1997 | 1998 | 1999 | 2000 | 2001 | TOTAL |
|---------|---------|--------|--------|--------|--------|--------|--------|---------|
| male | persons | | | 1 | | | 1 | 2 |
| | tests | 381 | 489 | 443 | 609 | 732 | 164 | 2,923 |
| female | persons | 11 | 5 | 7 | 3 | 4 | 18 | 62 |
| | tests | 21,642 | 23,662 | 23,509 | 23,567 | 23,408 | 23,618 | 155,198 |
| unknown | persons | | | | | | | - |
| | tests | 1,093 | 686 | 581 | 440 | 354 | 471 | 5,152 |
| total: | persons | 11 | 5 | 8 | 3 | 4 | 19 | 64 |
| | tests | 23,116 | 24,837 | 24,533 | 24,616 | 24,494 | 24,253 | 163,273 |

2001 figures are year-to-date.

Graph 2.7

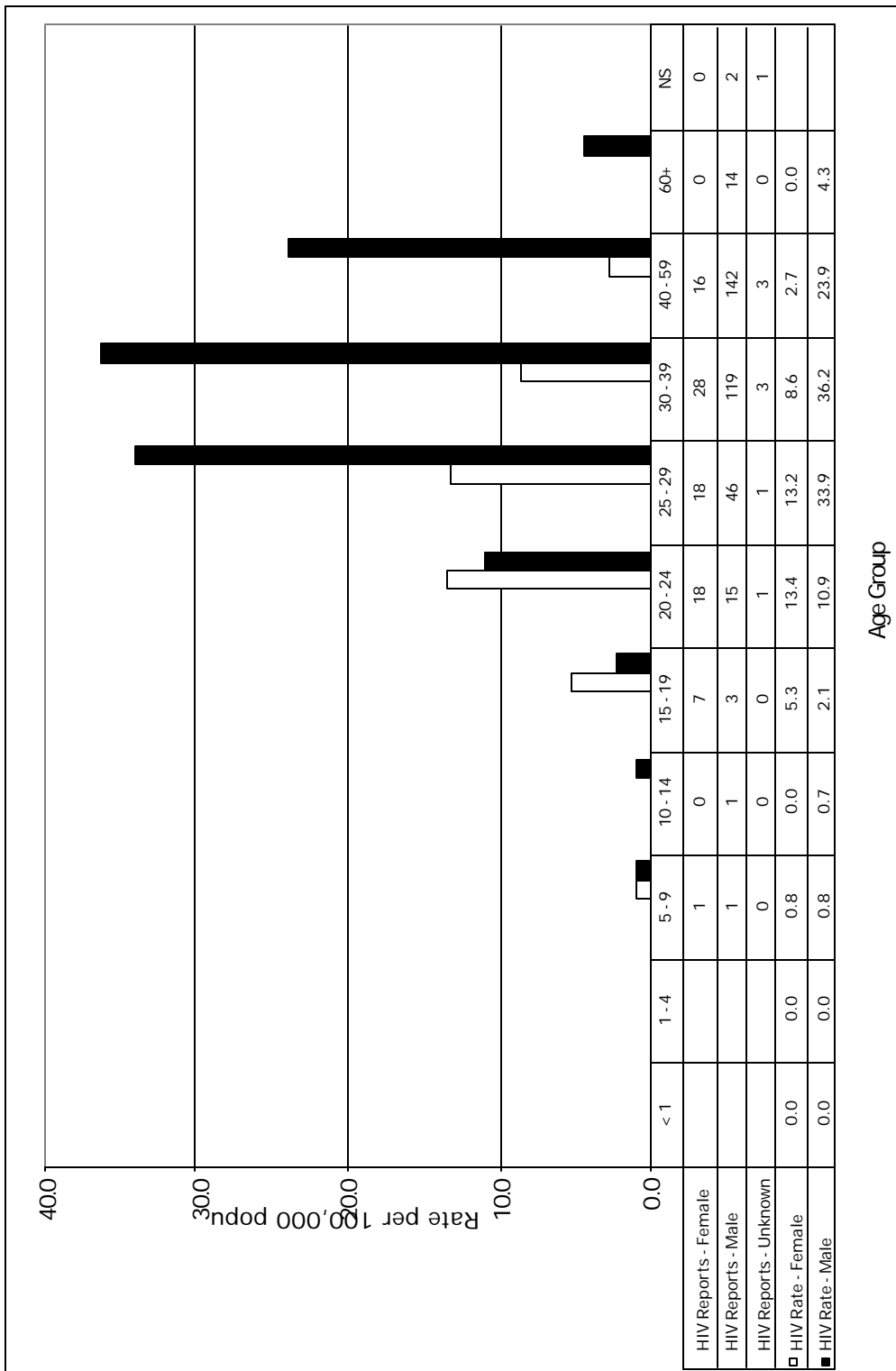
Persons Testing Newly Positive for HIV by YEAR for BC, 1991-2001

rate per 100,000 population



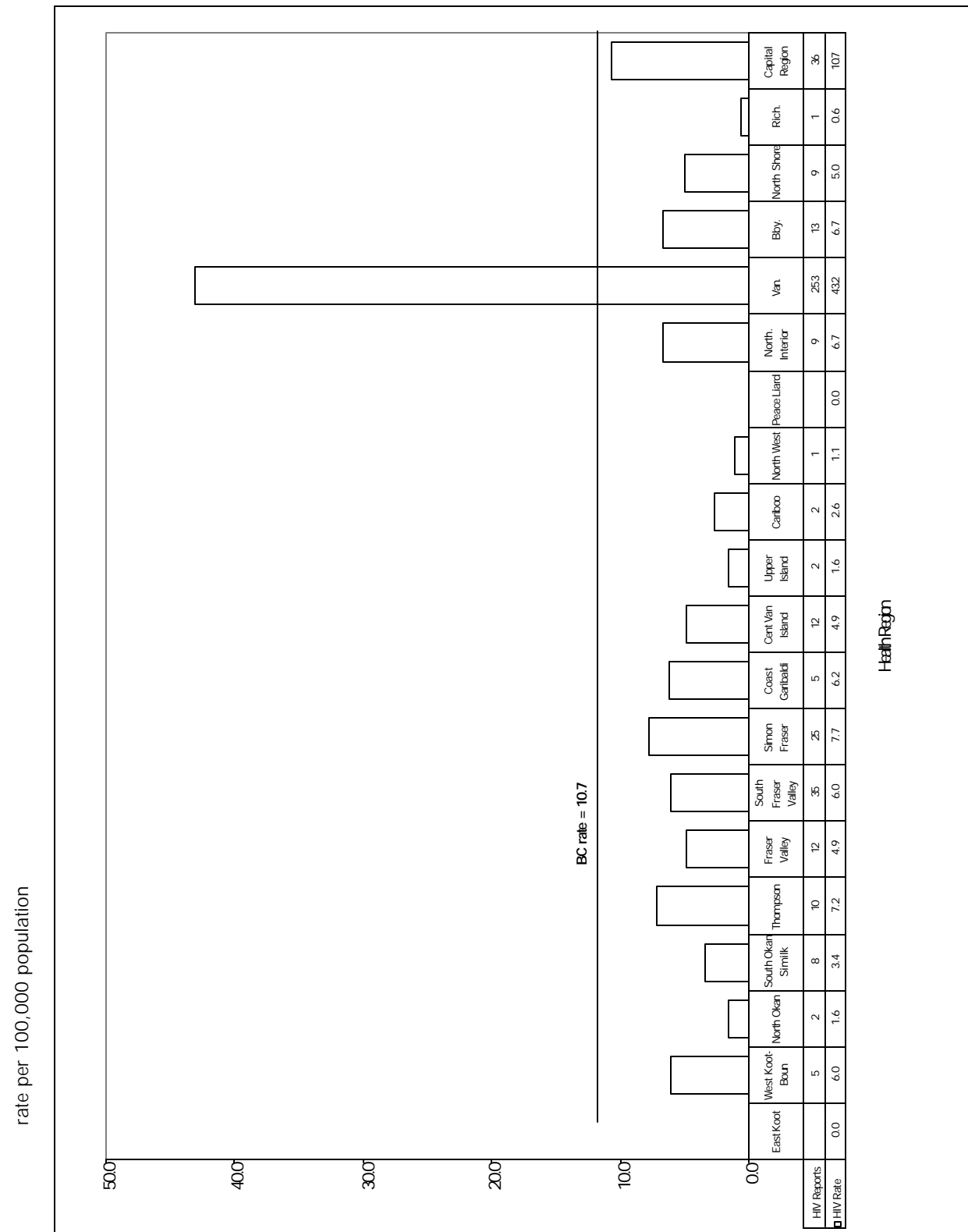
Graph 2.8

Persons Testing Newly Positive for HIV by AGE and GENDER, 2001



Graph 2.9

Persons Testing Newly Positive for HIV by HEALTH REGION, 2001



HIV FOOTNOTES

| No. | Risk Category | Footnote |
|-----|--------------------|--|
| (1) | blood/BP recipient | Follow-up is <u>not</u> done for each person testing newly positive for HIV in this risk category. Persons in this risk category are self- |
| (2) | unspecified PE | Initially used on the requisition form to include IDU, blood/BP recipients, hospital incidents, and all other parenteral exposures. Unspecified PE was eliminated from the revised requisition form in |
| (3) | occupational EXP | Follow-up <u>is</u> done on each positive HIV test in this risk category to determine if the person's positive test is the result of a <u>true</u> occupa- |
| (4) | other | Includes the following: endemic area immigrants; semen recipients; persons who frequent sex trade workers; and organ donors. |
| (5) | perinatal < 18 mos | Since HIV antibody testing is not diagnostic prior to 18 months of age, HIV infections documented in this age group were confirmed through direct detection of HIV on two or more consecutive assays |
| (6) | delayed testing | A child infected through perinatal transmission who has not been previously identified prior to the age of 18 months by a direct de- |

| No. | Specimen Source | Footnote |
|------|-------------------------|--|
| (7) | STD/A TEC Clinic | Both the STD and ATEC Clinic are located at 655 West 12 th Avenue in Vancouver. |
| (8) | STD/AIDS Outreach | HIV testing is done at various sites in the Lower Mainland (e.g. jails, outreach clinics, detoxification centres) by outreach nurses |
| (9) | VIDUS Study | To address the outbreak of HIV among IDUs, the BC Centre for Excellence in HIV/AIDS and the BC Centre for Disease Control Society initiated the VIDUS Study (an open cohort study) to investigate the determinants of HIV transmission and the progression of HIV in |
| (10) | downtown clinics | The downtown clinics provide medical, dental, pharmaceutical, nutritional, and other health care services to residents of Vancou- |
| (11) | corrections | Many inmates choose to get an HIV test done at the time of intake or when they perceive that they have been at risk of acquiring HIV. |
| (12) | UBC Virology Laboratory | UBC performs routine HIV antibody ELISA tests. Positive ELISA screens are always confirmed with Western Blots at the Provincial |