

# Aerosol Generating Medical Procedure (AGMP)

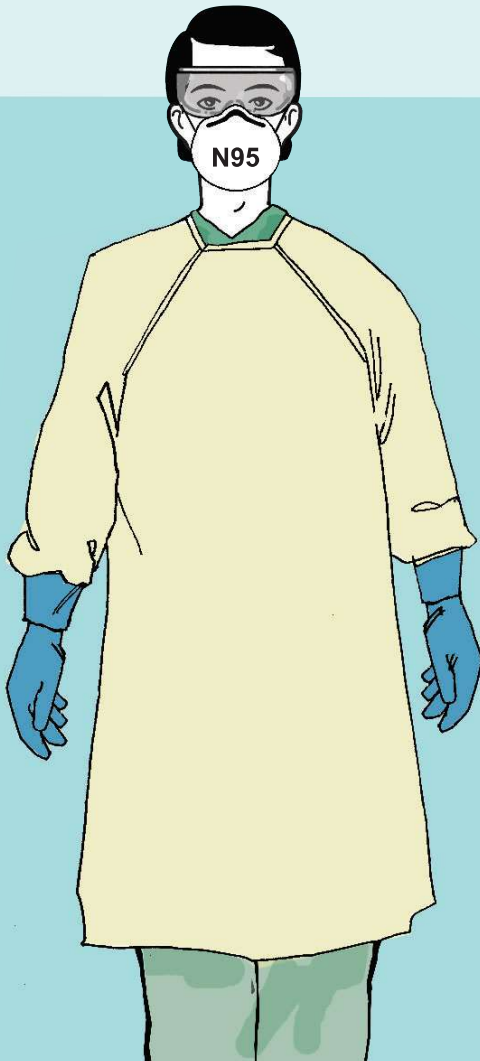
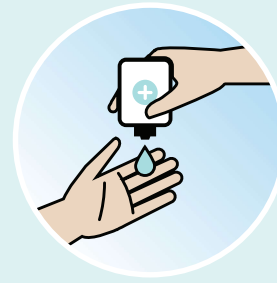
AGMP precautions can be discontinued at: .....  
[date, time]

Bed # .....



**Families and visitors**  
Do NOT enter room.  
Speak with nursing staff.

Clean hands before entering and after leaving room. Use soap and water or alcohol-based hand sanitizer.



## Staff

Before entering:

- Perform a point-of-care risk assessment.
- Follow existing signage.
- Don PPE: Gloves, gown, eye protection, fit-tested N95 respirator or equivalent.
- Ensure appropriate PPE for others entering the room.

## Housekeeping

Consult with nurses to confirm if the room is ready for cleaning and disinfection.

*Note: Preferred room placement is an airborne infection isolation room. If not available, use a private room with door closed.*

Use this sign when indicated by infection prevention and control guidelines