

## Distribution of Illicit Drug Toxicity Deaths (2022) by Community Health Service Areas

The Community Health Service Area (CHSA) offer the most granular geographic level at which illicit drug toxicity deaths in British Columbia are released. Illicit drug toxicity deaths are notified by the BC Coroners Service and include all illicit drug toxicity deaths in British Columbia (accidental and undetermined) that occurred in 2022. The BC Centre for Disease Control geocoded the data using information that best represents the location of the fatal drug poisoning event according to the following algorithm: location of injury, death (if not a medical facility), home (if township of residence is the same as township of injury), or death at a medical facility (in this order).

The public release of these data at the CHSA level meets the BCCDC Policy for Public Release of Aggregate Data. This requires data suppression if the 2022 all-cause mortality count is less than 20 (data provided by BC Vital Statistics). Additional data suppression occurs if the CHSA population is greater than 50% First Nations (data from 2021 Census).

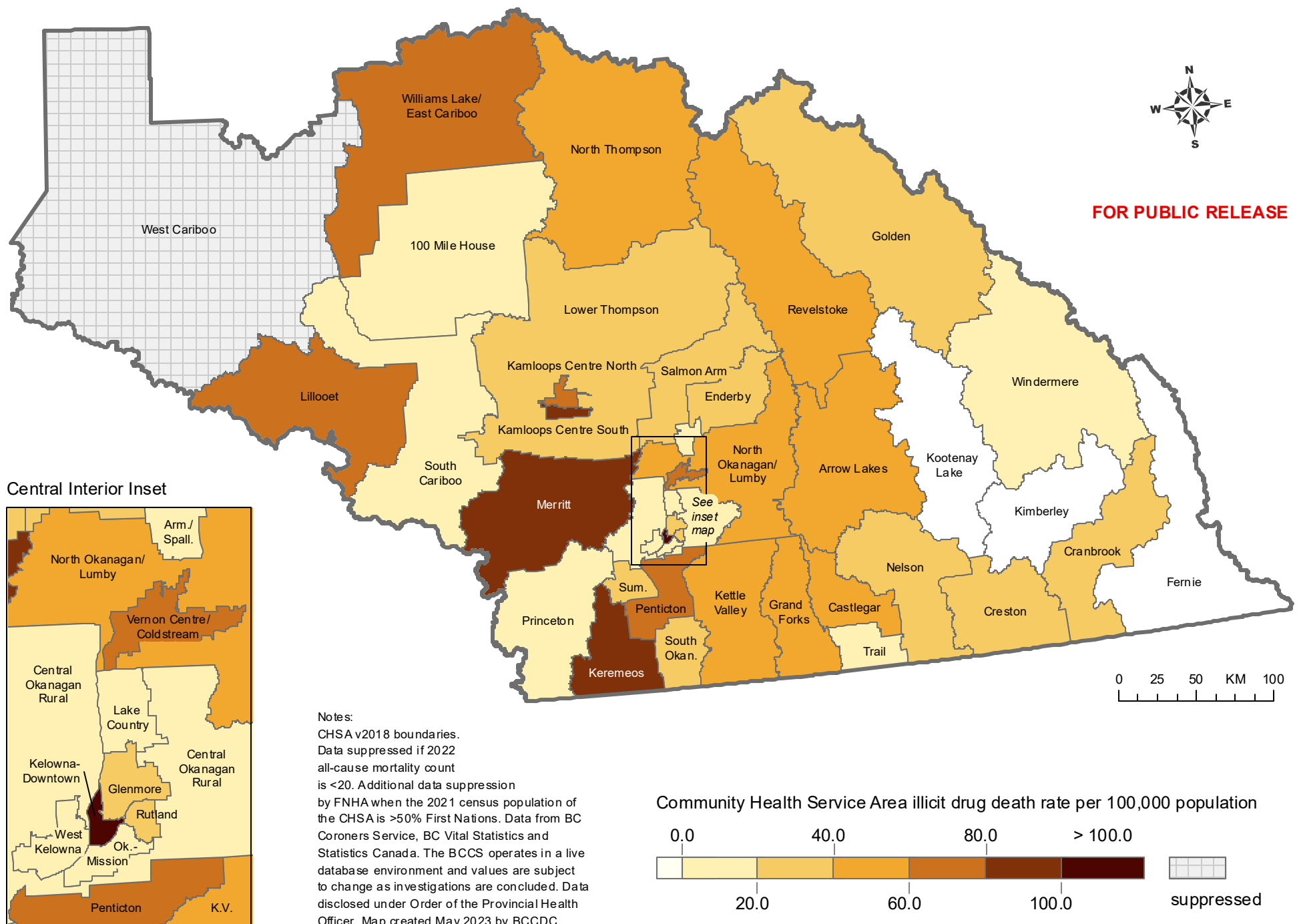
Please note that the BC Coroners Service operates in a live database environment and values are subject to change as investigations are concluded; data may not be directly comparable to previously published counts. Data are collected and disclosed under Order of the Provincial Health Officer.

### Notes:

Illicit drug category includes the following:

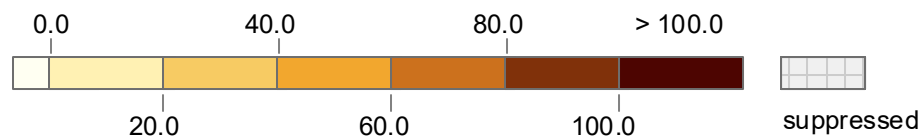
- Street drugs (controlled and illegal drugs: heroin, cocaine, MDMA, methamphetamine, illicit fentanyl, etc.)
- Medications not prescribed to the decedent but obtained/purchased on the street, from unknown sources or where origin of drug not known
- Combinations of the above with prescribed medications

# 2022 Illicit Drug Toxicity Deaths by CHSA in Interior Health



# 2022 Illicit Drug Toxicity Deaths by CHSA in Fraser Health

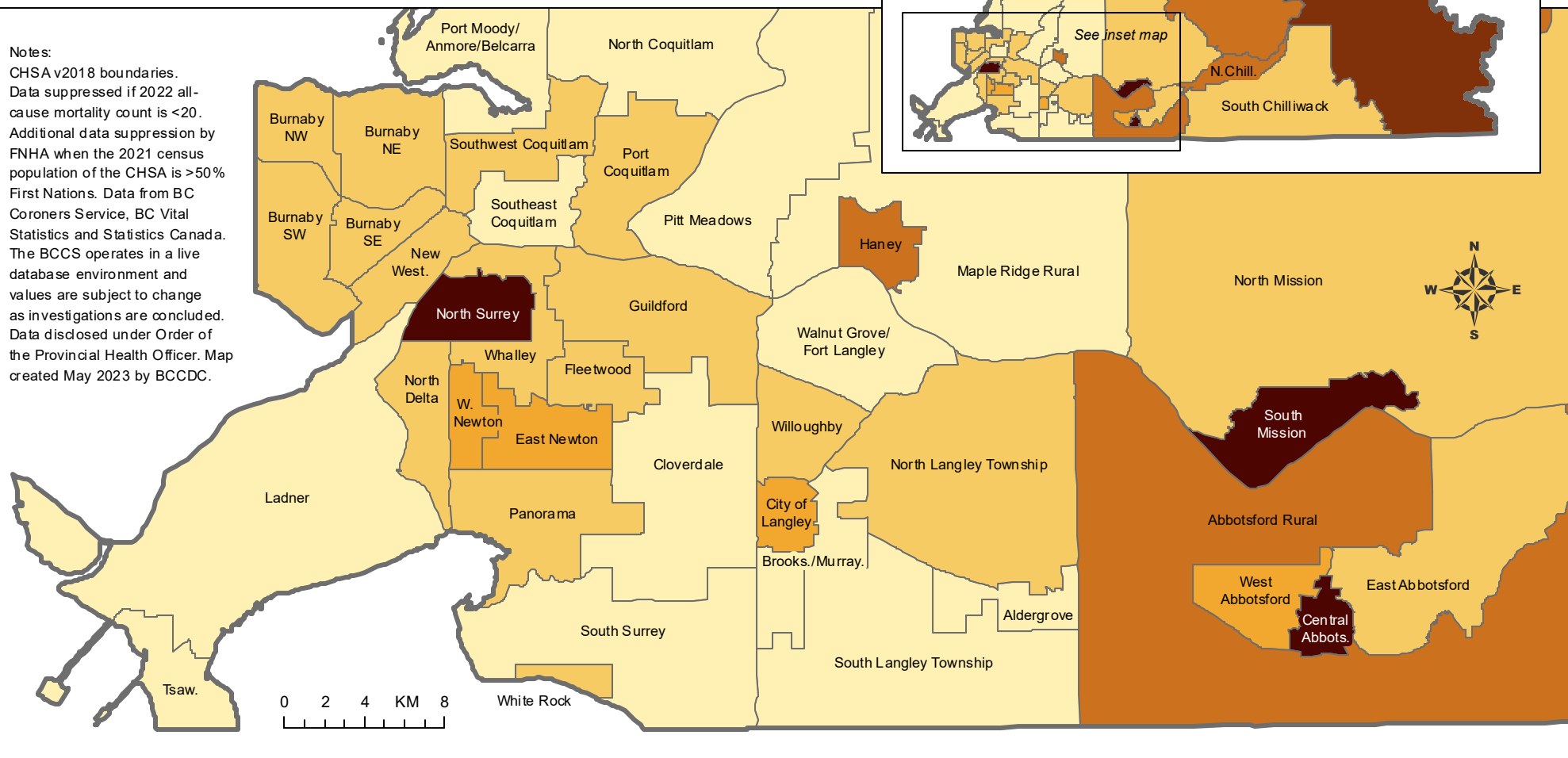
Community Health Service Area illicit drug death rate per 100,000 population



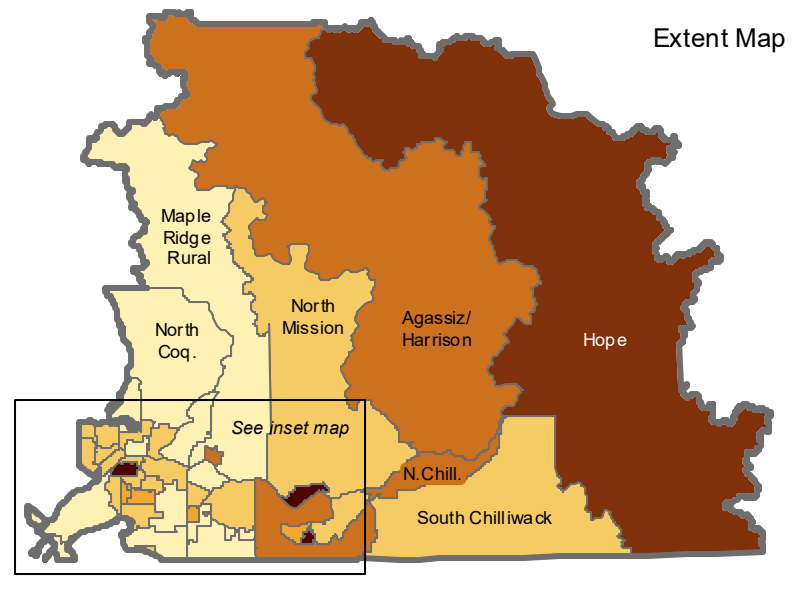
**FOR PUBLIC RELEASE**

Inset Map

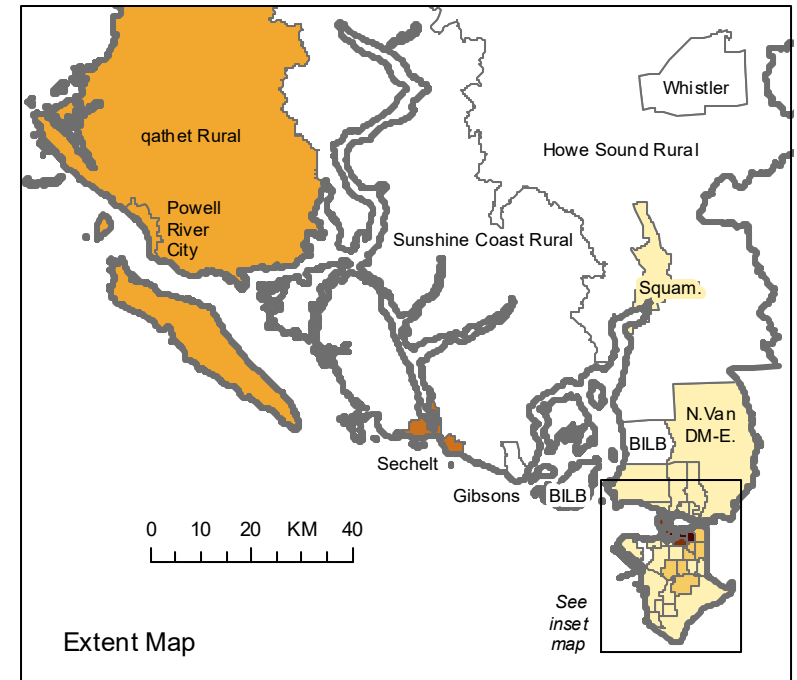
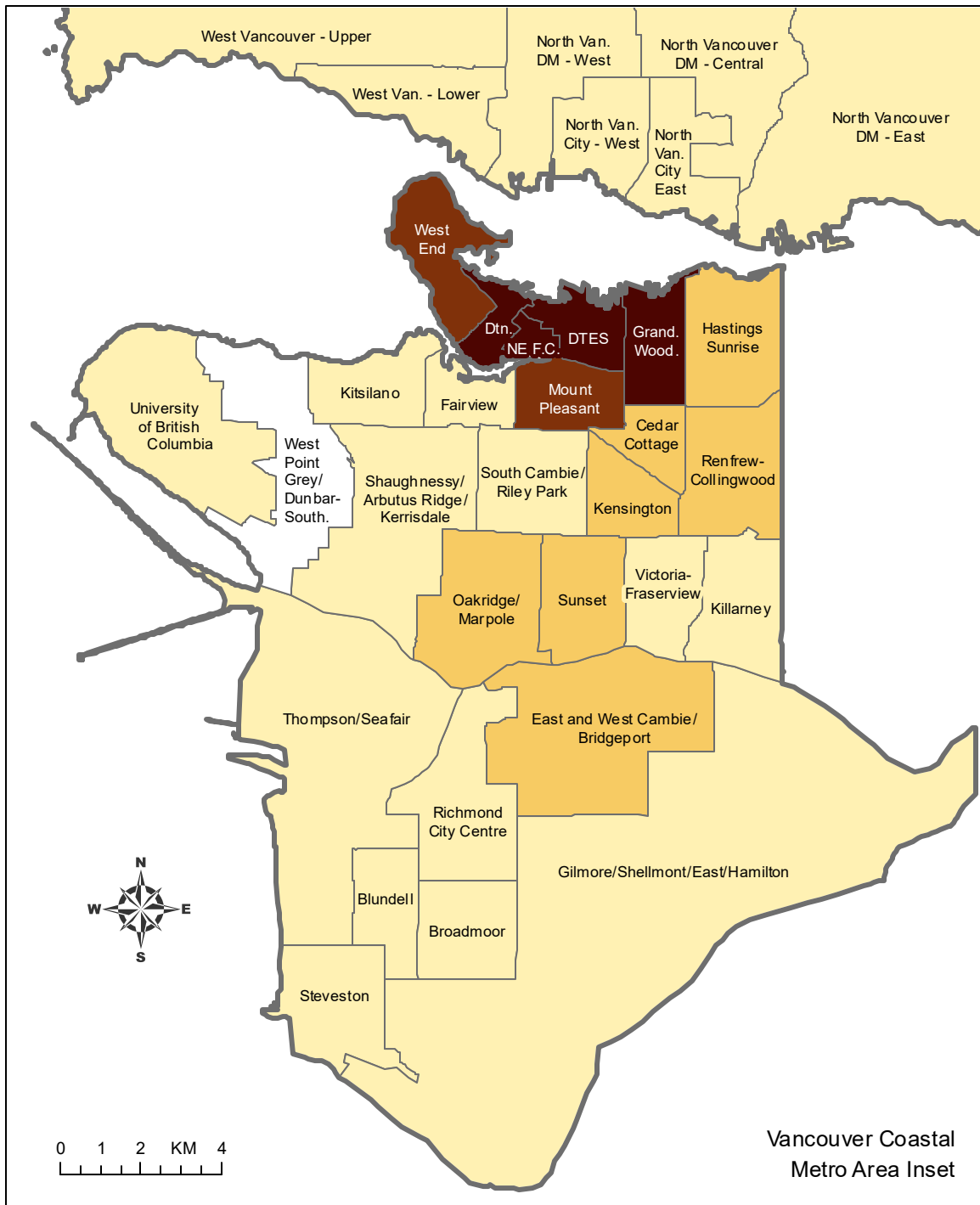
Notes:  
CHSA v2018 boundaries.  
Data suppressed if 2022 all-cause mortality count is <20.  
Additional data suppression by FNHA when the 2021 census population of the CHSA is >50% First Nations. Data from BC Coroners Service, BC Vital Statistics and Statistics Canada. The BCCS operates in a live database environment and values are subject to change as investigations are concluded. Data disclosed under Order of the Provincial Health Officer. Map created May 2023 by BCCDC.



Extent Map



# 2022 Illicit Drug Toxicity Deaths by CHSA in Vancouver Coastal Health



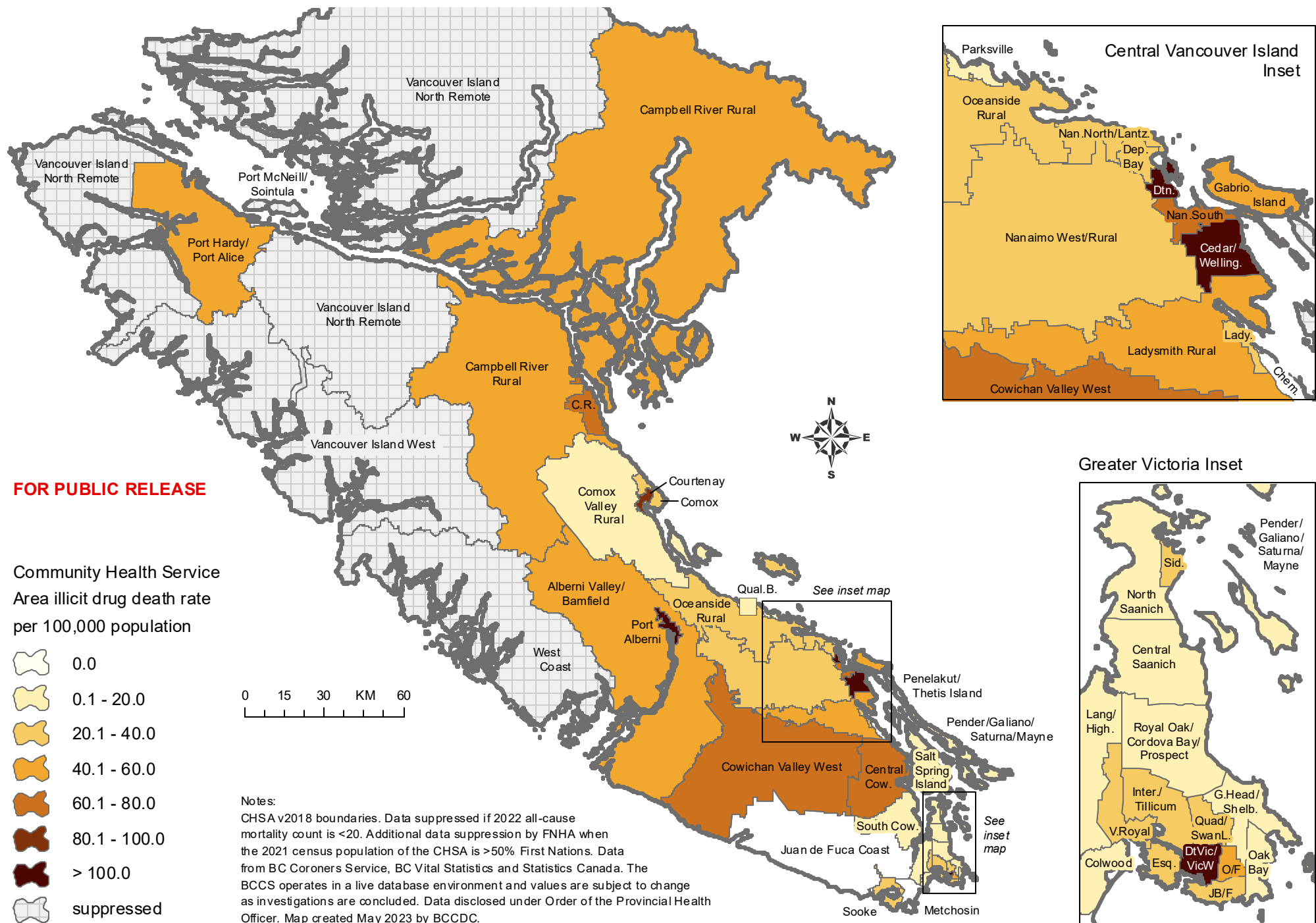
Community Health Service  
Area illicit drug death rate  
per 100,000 population



Notes:  
CHSA v2018 boundaries. Data suppressed if 2022 all-cause mortality count is <20. Additional data suppression by FNHA when the 2021 census population of the CHSA is >50% First Nations. Bella Coola Valley and Central Coast CHSAs are not shown on this map (outside of the map extent and data are suppressed). Data from BC Coroners Service, BC Vital Statistics and Statistics Canada. The BCCS operates in a live database environment and values are subject to change as investigations are concluded. Data disclosed under Order of the Provincial Health Officer. Map created May 2023 by BCCDC.

**FOR PUBLIC RELEASE**

# 2022 Illicit Drug Toxicity Deaths by CHSA in Island Health



# 2022 Illicit Drug Toxicity Deaths by CHSA in Northern Health

**FOR PUBLIC  
RELEASE**

