

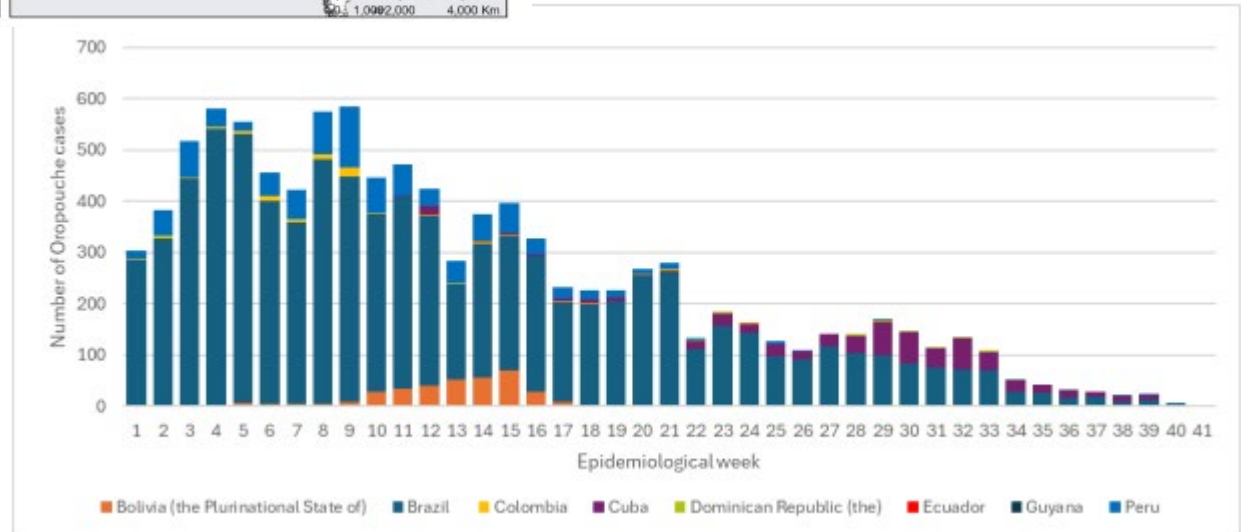
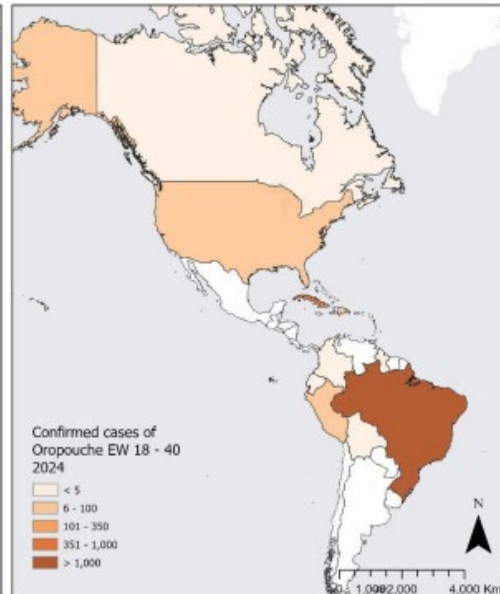
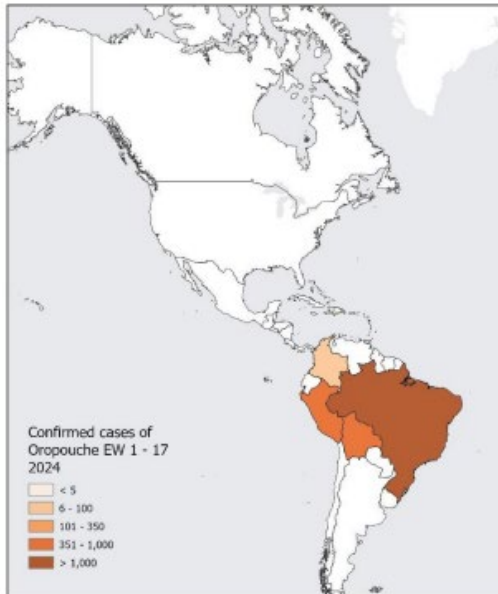


VECTOR UPDATES FROM SOUTH OF THE BORDER



Liz Dykstra, PhD, BCE
Public Health Entomologist

Oropouche Virus



Oropouche Virus in U.S.

Total Human Disease Cases in 2024*

94

Oropouche disease cases based on travel status selected above

Neuroinvasive Human Disease Cases in 2024

2

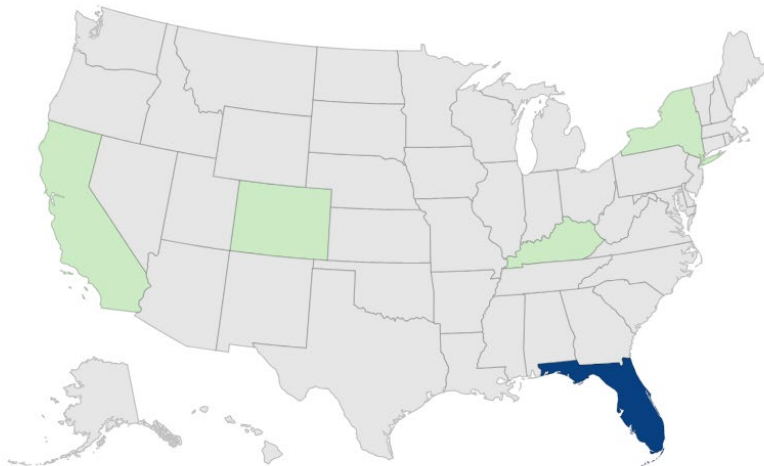
Oropouche neuroinvasive cases based on travel status selected above

States and Territories Reporting Cases in 2024

5

States and territories reporting Oropouche cases based on travel status selected above

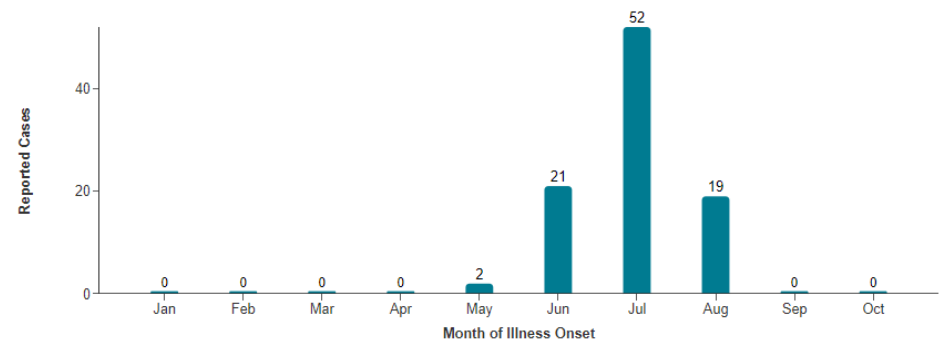
Location of Residence, 2024



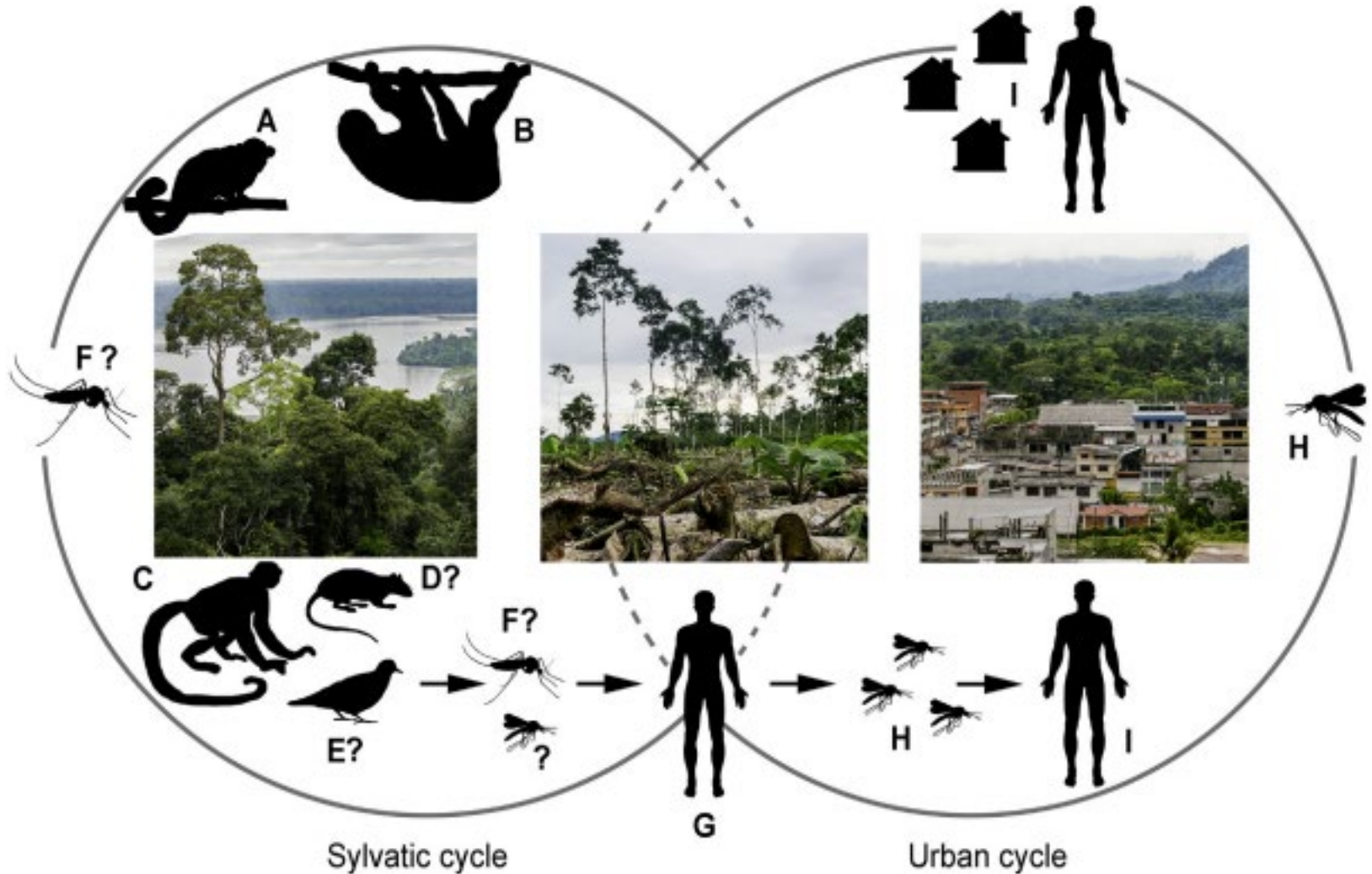
Legend

● No reported cases ● 1 to 5 ● 6 to 10 ● 11 to 20 ● >20

Month of Illness Onset, 2024



Oropouche Virus Transmission Cycle



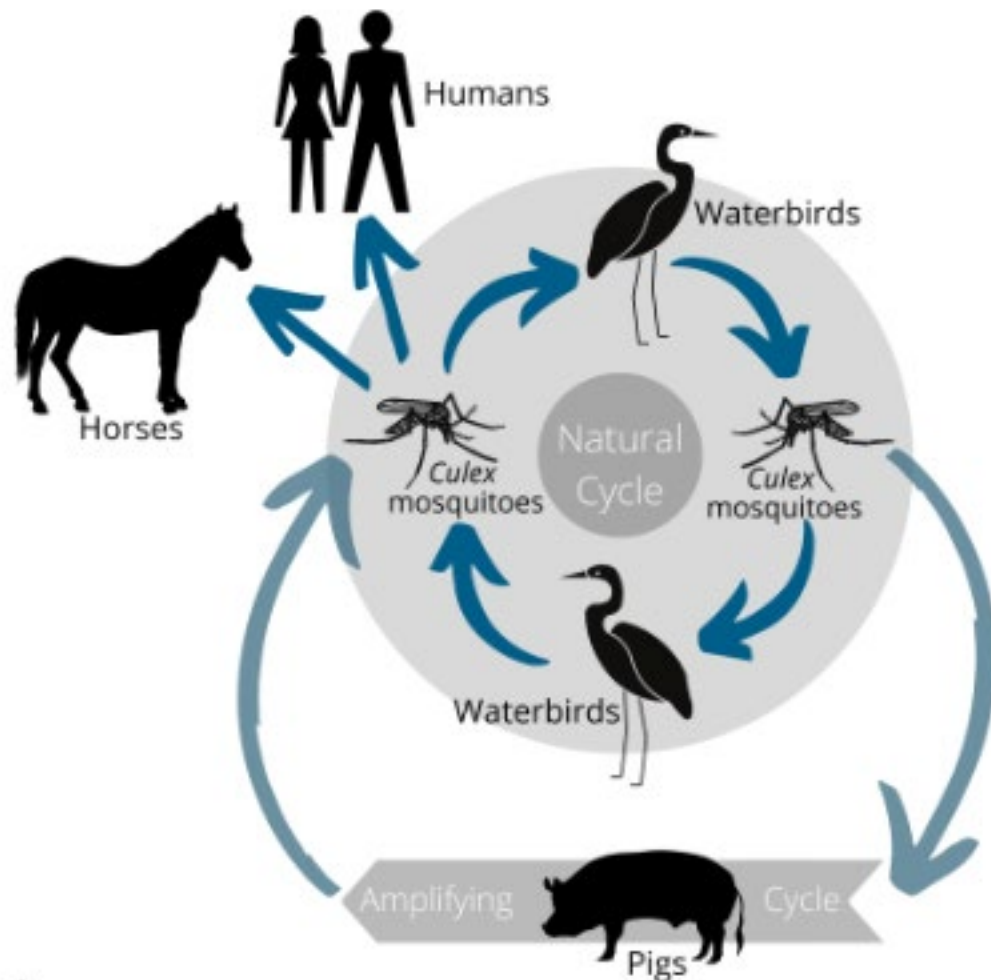
Romero-Alvarez et al. 2017



Photo: Scott Bauer, USDA ARS



Japanese Encephalitis



Australian Government
Department of Agriculture,
Water and the Environment

Japanese encephalitis disease spread pathway

Areas at risk for Japanese Encephalitis



Aedes aegypti in Oregon



West Nile Virus - 2024

Map 1. Human cases by county of likely exposure



Map 2. Human cases by county of residence



Map 3. Infected horses/other mammals, birds, and mosquitoes



- 1 Out-of-State Acquired case
- 10 Positive Mosquito Pools



Mapping *Ixodes pacificus* and *Borrelia burgdorferi* Habitat Suitability Under Current and Mid-Century Climate in the Pacific Northwest (BC and WA)

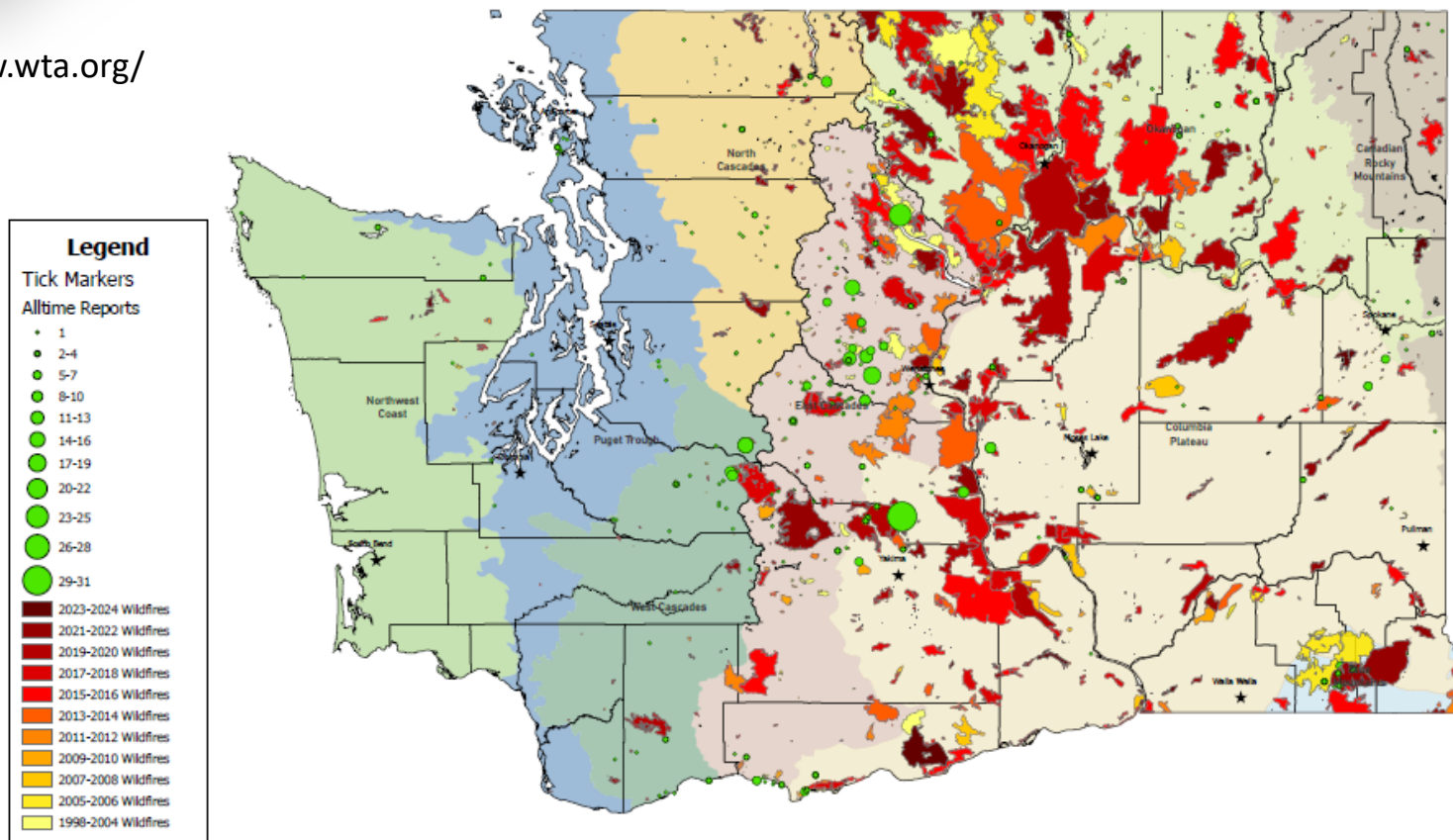
Isabelle Couloigner,¹ Carl Dizon,¹ Sunny Mak,² Elizabeth Dykstra,³ Erin Fraser,² Muhammad Morshed,^{2,4} Stefan Iwasawa,² Sylvia Checkley,¹ and Susan Cork¹





Mapping Tick Encounters from Washington Trails Association Trip Reports

<https://www.wta.org/>





Liz Dykstra
elizabeth.dykstra@doh.wa.gov



To request this document in another format, call 1-800-525-0127. Deaf or hard of hearing customers, please call 711 (Washington Relay) or email civil.rights@doh.wa.gov.