

Monkeypox Surveillance Report

British Columbia | As of November 28, 2022 2:00 PM



BC Centre for Disease Control
Provincial Health Services Authority

Introduction

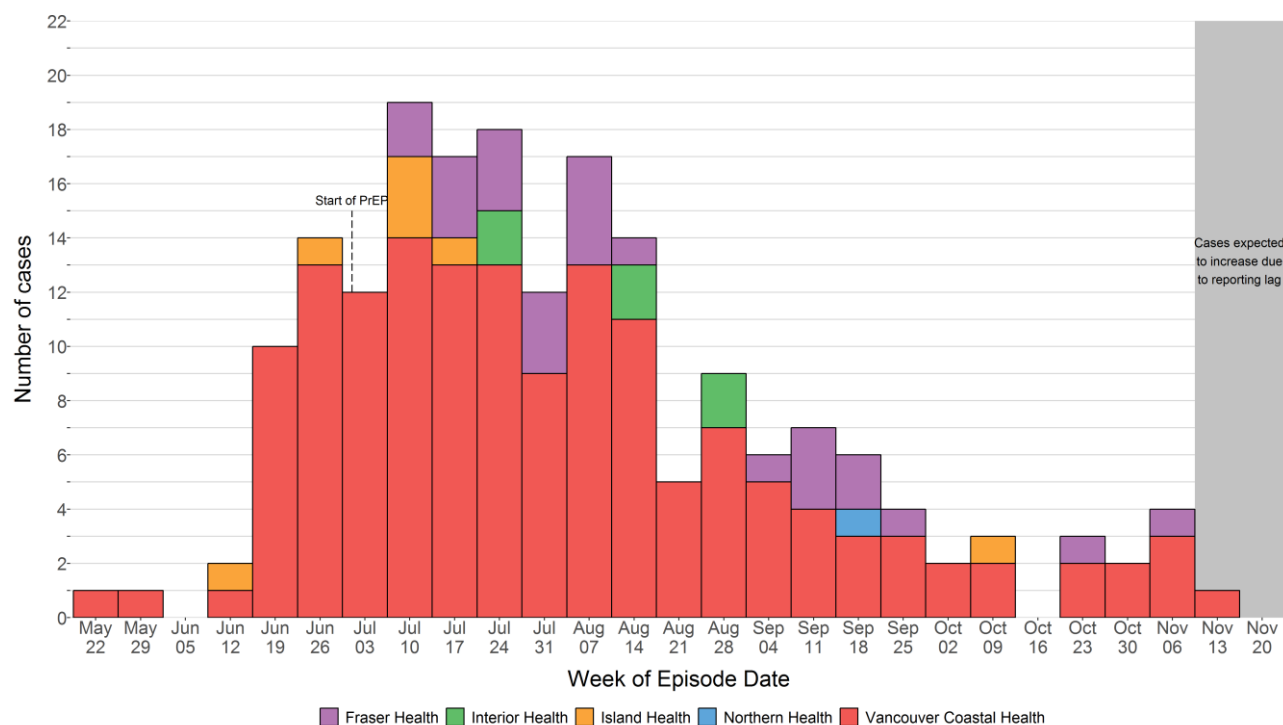
This summary is prepared at the BCCDC in collaboration with regional health authorities in BC. Epidemiological data are summarized to provide an understanding of the public health risk of Monkeypox. Data in this summary are based on confirmed cases reported to BCCDC by Health Authorities as of the date and time indicated above. The information in this report may be incomplete for the more recent cases. The current case definitions are available on the [BCCDC website](#).

Overview

- The total number of confirmed monkeypox cases is 189. The weekly incidence is declining.
- Over 3,900 monkeypox virus tests have been performed in BC.
- For the vast majority of cases, the most likely mode of transmission was person-to-person transmission through close, intimate contact during sexual activity.
- Over 25,000 doses of Imvamune[®] vaccine have been administered in BC.

Epidemiological Curve

Figure 1. Confirmed monkeypox cases by week of episode date¹ and health authority, BC, May 15 to Nov 26, 2022 (n=189²)



¹ Episode date is the date of the earliest symptom if known, else lab specimen collection date.

² Cases pending episode date excluded

Exposure Information

During the public health investigation of monkeypox cases, potential exposures are assessed to better understand sources of infection.

- Based on the exposure information collected, for the vast majority of cases the most likely mode of transmission was person-to-person transmission through close, intimate contact during sex.
- A quarter of all cases had a known contact either with a monkeypox case, a person with symptoms compatible with monkeypox symptoms, or with materials contaminated with monkeypox virus.
- Most cases didn't travel out of BC during the 21 days preceding their illness onset, suggesting acquisition in BC.

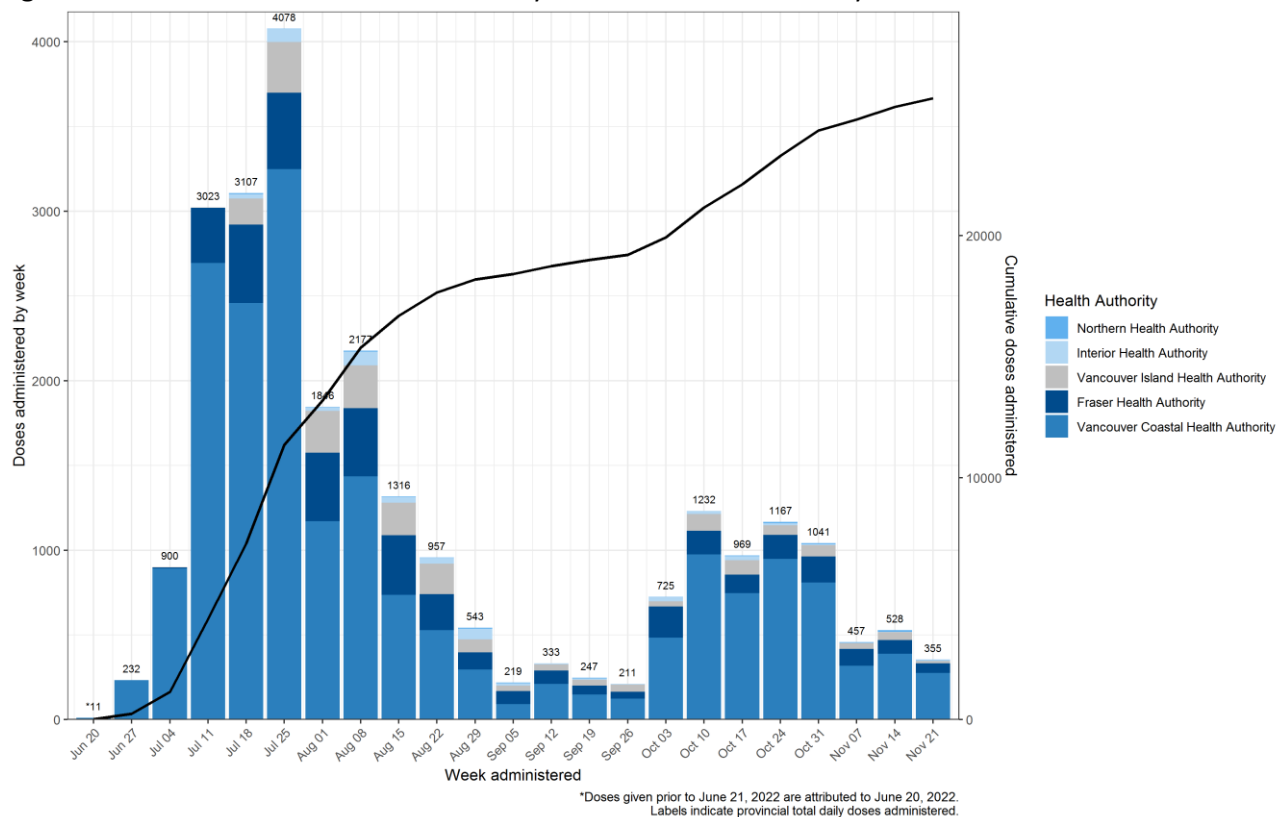
Monkeypox Vaccination Campaign

Table 1. Total IMVAMUNE® doses administered by dose number and health authority

Health Authority	Total Doses Administered
Fraser Health	3,932
Northern Health	77
Vancouver Coastal	19,223
Island Health	1,975
Interior Health	467
Total	25,674

Source: Provincial Immunization Registry (PIR), data extracted November 28, 2022 at 4:00 pm.³

Figure 2. IMVAMUNE® doses administered by week and health authority and cumulative doses administered



Source: Provincial Immunization Registry (PIR), data extracted November 28, 2022 at 4:00 pm

³ Delays exist between vaccine administration and documentation into the PIR, therefore these data likely underrepresent total doses provided.