

## British Columbia (BC) COVID-19 Situation Report

### Week 46: November 8 – November 14, 2020

Table of Contents		General increase in COVID-19 across BC, with concerning trend toward greater involvement of older adults
Pandemic phase definitions	<a href="#">2</a>	Weekly COVID-19 incidence in BC was at least 65 per 100K in week 46, which is more than 4 times higher than at the start of Phase 3b in week 38 (mid-September: 16 per 100K). Week 46 incidence was elevated in all health authorities, highest in Fraser (FHA: 116 per 100K) and Vancouver Coastal (VCHA: 74 per 100K), lowest in Vancouver Island (VIHA: 8 per 100K). Note that recent weeks' tallies are expected to increase as data become more complete.
Epidemic curve	<a href="#">2</a>	
Weekly incidence by health authority and health service delivery area	<a href="#">2</a>	Percent positivity has also continued to climb, exceeding 6% provincially in week 46. Increase was evident in all HAs, with percent positivity in week 46 exceeding 9% in FHA, 4% in VCHA and Northern Health Authority (NHA), 3% in Interior Health Authority (IHA) and, for the first time since April, exceeding 1% in VIHA.
Test rates and % positive	<a href="#">4</a>	
Age profile, testing and cases	<a href="#">5</a>	Percent positivity exceeded 5% in all age groups, but notably exceeded 10% in elderly adults 80+ years. Week 46 incidence exceeded 100 per 100K in adults 20-29 years; 75 per 100K in adults 30-39 and 80+ years; and 50 per 100K in other age groups except children <10 years and adults 60-79 years (~35 per 100K). Of note, incidence among elderly adults 80+ years in week 46 is at least 50% higher than in week 45 and 10 times higher than week 38. <b>Given their greater risk of severe outcomes, this greater involvement of elderly adults is concerning.</b>
Severe outcome counts	<a href="#">8</a>	
Age profile, severe outcomes	<a href="#">9</a>	
Likely sources of infection	<a href="#">10</a>	There were 142 hospitalizations with a known admission date in week 46, about one-third higher than week 45 (109) or the first wave peak in hospital admissions in week 13 (107). Given ongoing increase in cases, the ultimate tally and timing of the second wave peak in severe outcomes has yet to be determined.
Care facility outbreaks	<a href="#">12</a>	In week 46, 22 deaths were recorded, an increase from week 45 (13) and a tally now approaching the first wave peak of 26 deaths in week 15. In week 46, 17/22 deaths were 70+ years old, but the first death in BC under 40-years-old (i.e. 30-39 years) was also recorded. Of 302 deaths in total in BC, about two-thirds (205) were associated with a care facility outbreak and 84% (255) were 70+ years.
Clinical indicators	<a href="#">13</a>	There were 22 care facility outbreaks reported in week 46 (13 by FHA, 5 in VCHA, 3 in IHA and 1 in VIHA), 11 with earliest onset date in prior weeks. Facility outbreak tallies by earliest onset date are highest so far in week 45 (16 outbreaks).

#### BELOW ARE IMPORTANT NOTES relevant to the interpretation of data displayed in this bulletin:

- Unlike other summaries based on report date, and unless otherwise specified, this bulletin mainly adopts episode date defined by dates of illness onset, hospital admission, or death. When these dates are unknown, report date is used.
- Data are provided by epidemiological week. Episode-based tallies and incidences for recent weeks, notably the current report week, are expected to increase as case data, in particular onset dates, become more complete.
- Per capita rates/incidences are based on PEOPLE2020 population estimates (n=5,139,568 for BC overall).
- This bulletin refers to [pandemic phases](#) defined by population-level changes as described in the [Table\\*](#) on the next page.

**\*Table of [pandemic phases](#) defined by implementation or relaxation of population-level mitigation measures in BC:**

<b>PRE-PHASE 1</b> Before implementation January 15 (wk 3) to March 13 (wk 11), 2020	<b>PHASE 1</b> Implementation March 14 (wk 11) to May 18 (wk 21), 2020	<b>PHASE 2</b> Initial relaxation May 19 (wk 21) to June 23 (wk 26), 2020	<b>PHASE 3a</b> Further relaxation June 24 (wk 26) to Sept 12 (wk 37), 2020	<b>PHASE 3b</b> Start of school year Sept 13 (wk 38) to Current (wk 46), 2020
From earliest onset date	From start of March break  Additionally: <ul style="list-style-type: none"> <li>○ Mass gatherings &gt;50 banned (Mar 16)</li> <li>○ Traveller self-isolation required (Mar 17)</li> <li>○ Service restrictions (Mar 18)</li> <li>○ US/Canada border closure (Mar 20)</li> </ul>	Re-opening of services  Additionally: <ul style="list-style-type: none"> <li>○ Gradual/part-time return to school of K-12 students for 2019-20 school year (Jun 1)</li> </ul>	Broader re-opening  Additionally: <ul style="list-style-type: none"> <li>○ Re-opening non-essential travel in BC, hotels, TV/film</li> <li>○ Return to in-class learning for 2020-21 school year, partial week (Thurs, Sept 10)</li> </ul>	From first complete epidemiological week of 2020-21 school year

## A. COVID-19 case counts and epidemic curve

### Report tallies by week

As shown by the gray line in [Figure 1](#), there have been at least 1,000 new COVID-19 reports per week in BC since week 42, with steady sharp increase to 4,062 reports during week 46. The weekly tally by report date, however, includes cases with illness onset date in preceding weeks. In that regard, analyses based on episode date (i.e. illness onset date and only if that is unavailable, then report date) may better represent the evolution of the epidemic curve. The bars in [Figure 1](#) display the epidemic curve (i.e. tally of COVID-19 cases in BC by epidemiological week) based on episode date, coloured by health authority.

### Episode-based cumulative incidence: provincially and by health authority (HA) (not shown)

Provincially, there have been 23,652 cases between week 3 (mid-January) and week 46 (second week of November), corresponding to a cumulative incidence of 458 per 100,000 (100K). By HA, this cumulative tally (and incidence) includes: 14,616 cases in Fraser Health Authority (FHA: 754 per 100K); 6,910 cases in Vancouver Coastal Health Authority (VCHA: 571 per 100K); 1,091 cases in Interior Health Authority (IHA: 131 per 100K); 543 cases in Northern Health Authority (NHA: 189 per 100K); and 402 cases in Vancouver Island Health Authority (VIHA: 46 per 100K).

### Episode-based weekly incidence: provincially and by HA and health service district area (HSDA)

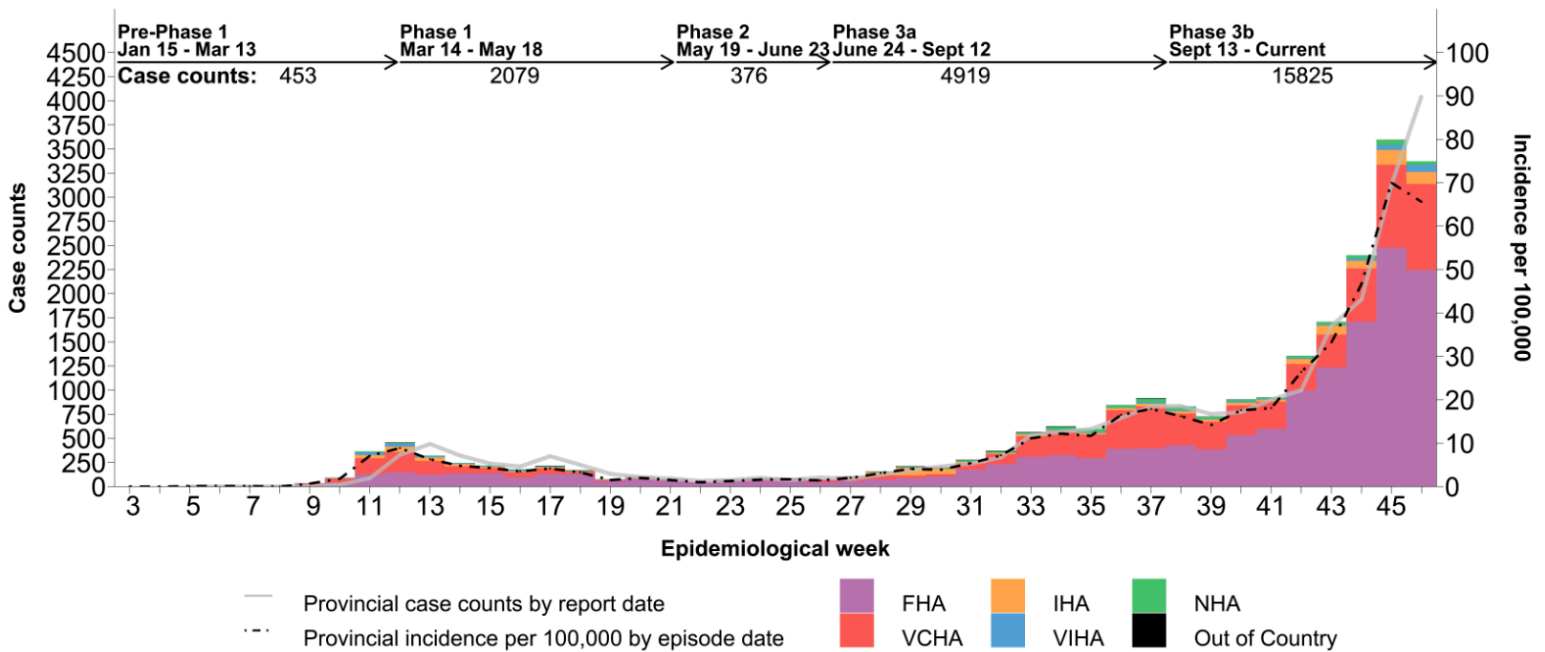
As shown in [Figure 1](#), the weekly tally of COVID-19 cases by episode date peaked for wave one in week 12 (mid-March), corresponding to a weekly incidence of 9 per 100K. After the Phase 3a re-opening of services in week 26 (June), weekly incidence has consistently surpassed 10 per 100K starting week 33 (mid-August), with gradual increase to 18 per 100K by week 41, jumping to 26 per 100K in week 42 (mid-October). Weekly incidence has shown steady sharp increase thereafter.

As of data extraction for the current bulletin, there were 3,596 and 3,373 cases with episode date in weeks 45 week 46, respectively, corresponding to incidences of 70 and 66 per 100K. Compared to the week 38 start of Phase 3b, the incidence for current report week 46 is already four times higher (16 vs. 66 per 100K) and is expected to further increase as data, notably onset dates, become more complete. In fact, if previous trends continue, we may expect the episode-based rate in week 46 to match or exceed the rate based on report date, which is currently 79 per 100K.

As shown in [Figure 2](#), incidence in week 46 is higher than week 38 in all HAs, particularly in FHA (a five-fold increase from 22 to 116 per 100K) and VCHA (a three-fold increase from 27 to 74 per 100K). In FHA, Fraser South HSDA has been most affected and in VCHA, Vancouver HSDA is driving rates. In IHA, week 38 to 46 rates increased from 3 to 15 per 100K, driven by the Okanagan HSDA. In VIHA, incidence increased from 1 to 8 per 100K between weeks 38 and 46, notably in Central and North Vancouver Island in weeks 45-46, while remaining the lowest incidence overall by HA. Incidence in NHA has increased from week 38 at 14 per 100K to week 45 at 20 per 100K, and is currently 14 per 100K at week 46.

**It warrants repeating that episode-based tallies for recent weeks will further increase as data become more complete.**

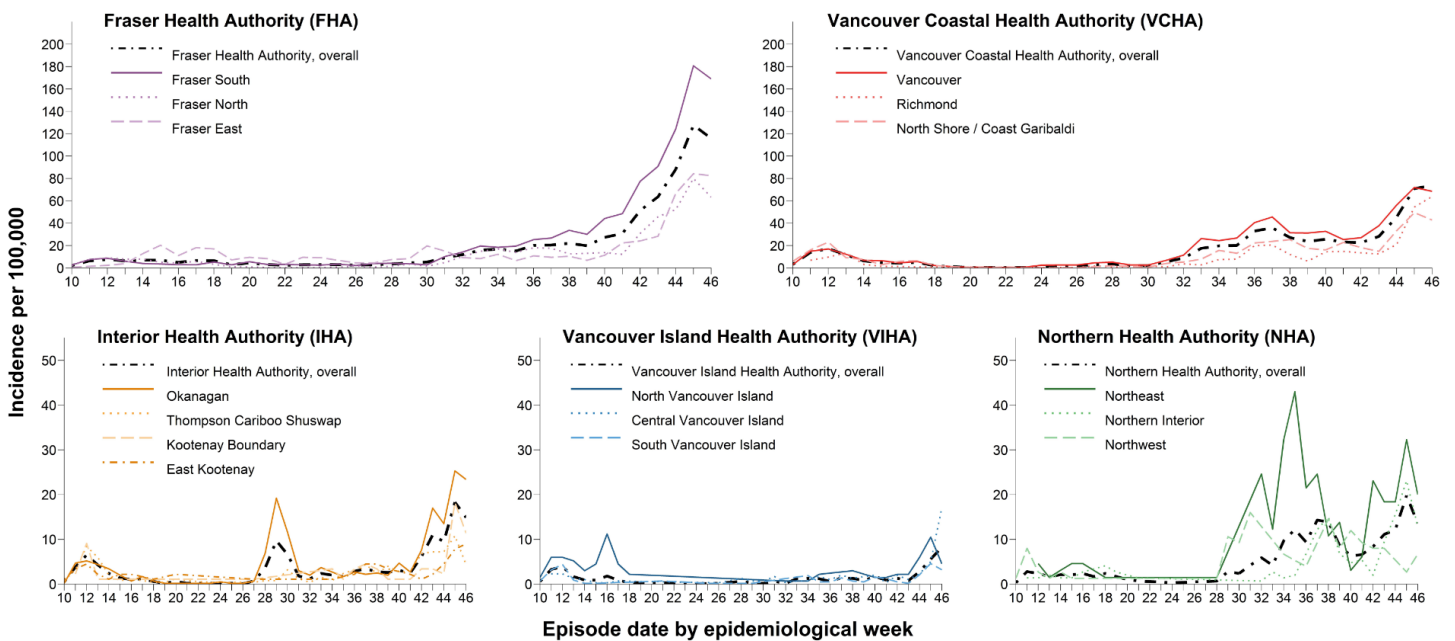
**Figure 1. Episode-based epidemic curve (bars)<sup>a</sup>, report date (line) and health authority (HA), BC January 15, 2020 (week 3) – November 14, 2020 (week 46) (N= 23,652)**



The average weekly rate by phase in Figure 1 is derived as the incidence divided by the number of weeks for Pre-Phase 1 (8 weeks), Phase 1 (9 weeks), Phase 2 (5 weeks), Phase 3a (11.5 weeks), and Phase 3b (9 weeks).

a. First onset date of a case in BC was January 15, 2020. Displayed data extracted after noon on Thursday, November 19, 2020.

**Figure 2. Weekly episode-based incidence rates by HA and health service delivery area (HSDA), BC March 1, 2020 (week 10) – November 14, 2020 (week 46)**

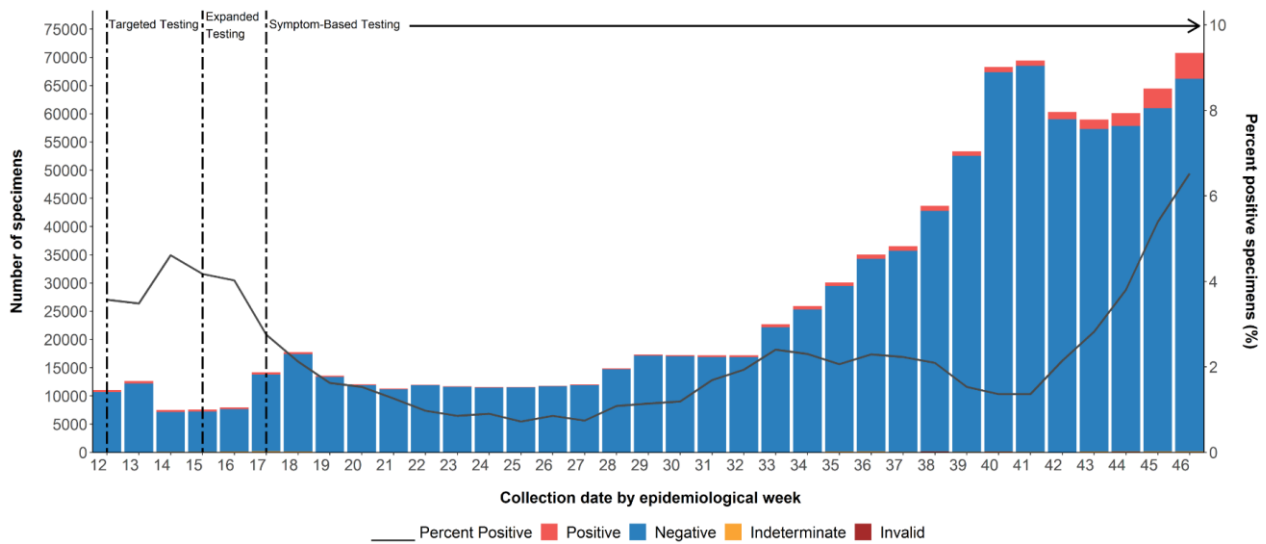


**B. Test rates and percent positive**

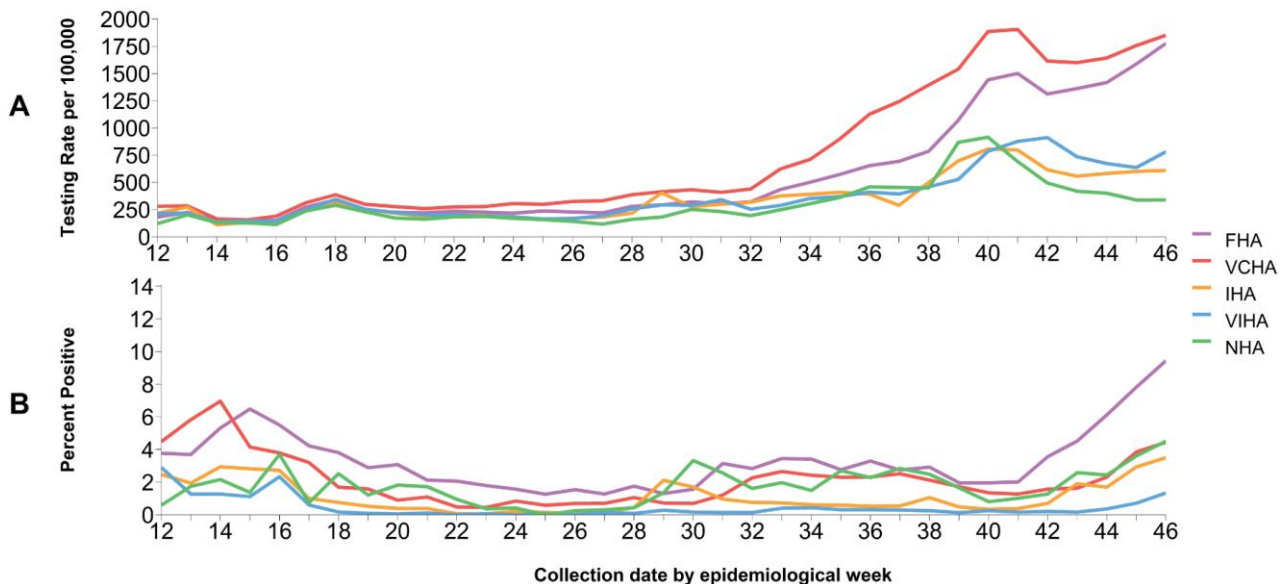
As shown by the bars in [Figure 3](#), the weekly number of respiratory specimens tested for SARS-CoV-2 in BC was highest at about 70,000 tests per week in weeks 40 and 41, declining slightly in weeks 42 to 44 (~60,000 each week), increasing again to about 70,000 tests in week 46. As shown by the line in [Figure 3](#), the percent that were SARS-CoV-2 positive (i.e. percent positivity) has increased steadily and steeply from week 41 (~1-2%) to week 46 (>6%), exceeding the peak positivity during wave one in week 14 (5%) when testing was targeted to high risk individuals and the number of tests per week (~7,500) was more than nine times lower than in week 46.

As shown in [Figure 4](#), the SARS-CoV-2 testing rate per capita by health authority in BC remains highest in VCHA and FHA. As also shown in [Figure 4](#), percent positivity has continued to climb in all health authorities, exceeding 9% in FHA, 4% in VCHA and NHA, 3% in IHA and for the first time since April, exceeding 1% in VIHA.

**Figure 3. Number of specimens tested and percent SARS-CoV-2 positive, by collection week, BC March 15, 2020 (week 12) – November 14, 2020 (week 46)<sup>a</sup>**



**Figure 4. Testing rates and percent SARS-CoV-2 positive by health authority and collection week, BC March 15, 2020 (week 12) – November 14, 2020 (week 46)<sup>a</sup>**



a. PLOVER extract on November 18, 2020 reflecting all clinical diagnostic laboratories in BC.  
 b. FHA=Fraser; IHA=Interior; VIHA=Vancouver Island; NHA=Northern; VCHA=Vancouver Coastal Health Authorities.

### C. Age profile – Testing and cases

#### Testing rates by age group

As shown by the coloured bars in [Figure 5](#), average weekly testing rates surged in Phase 3b compared to Phase 3a. Compared to average weekly testing rates across prior weeks 38-45 of Phase 3b, week 46 testing rates decreased among children <15 years but increased in all other age groups. The highest testing rates in week 46 were in adults 20-39 years old.

#### Percent positivity by age group

As shown by the dots in [Figure 5](#), the percent positivity in week 46 was substantially higher than prior weeks 38-45 of Phase 3b, exceeding 5% in all age groups but notably exceeding 10% among adults 80+ years.

#### Case distribution by age group

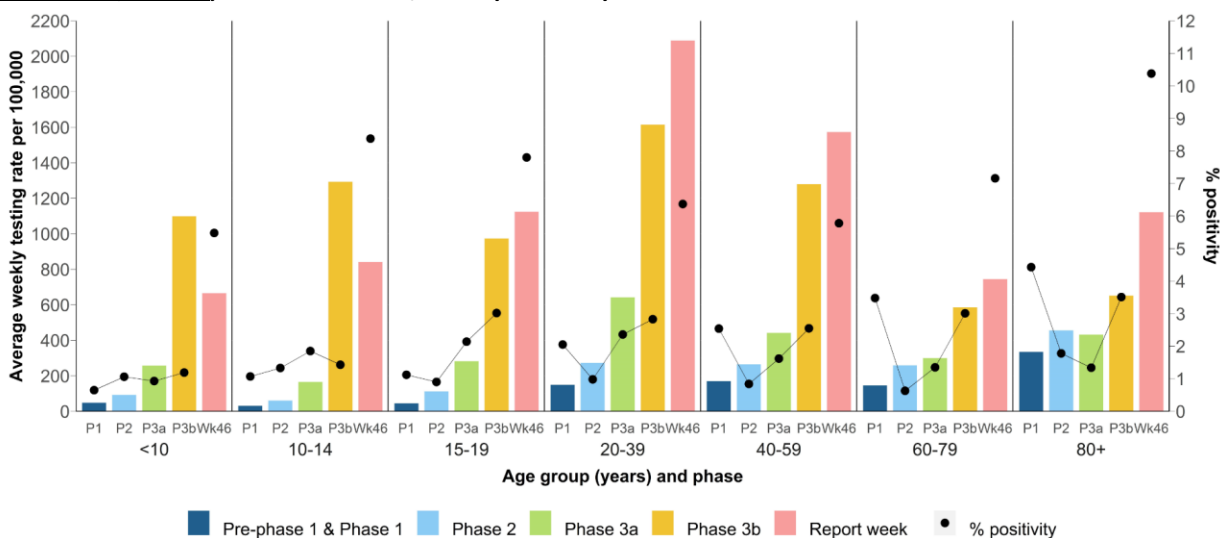
As shown in [Figure 6](#) and [Figure 7](#), adults 20-49 years contributed the greatest share of cases in week 46 (55%) as in prior weeks 38-45 of Phase 3b (59%). The subset of adults 20-39 years, however, contributed less in week 46 (41%) and weeks 38-45 (43%) than in Phase 3a (53%). Whereas contribution by other groups was relatively stable, the greatest increases in proportionate contribution by age group from prior weeks 38-45 of Phase 3b to current report week 46 were among those 10-14 years (from 3.4 to 4.8%; a 41% increase) and 80+ years (from 2.8% to 5.4%, a nearly two-fold increase).

#### Weekly incidence by age group

As shown in [Figure 8](#) and [Figure 9](#) since the start of Phase 3b in week 38 to current report week 46, the weekly incidence has increased in all age groups. Incidence was at least 3.5 times higher in all age groups in week 46 compared to week 38, increasing most among children 10-14 years (7 times) and elderly adults 80+ years (10 times), the latter two groups also showing the greatest increase relative to week 45 (38% and 50%, respectively). The increased incidence among 80+ year-olds (78 per 100K in week 46) is particularly concerning given their greater risk of severe outcomes ([Section E](#)). Week 46 incidence was highest in adults 20-29 years (109 per 100K) and adults 30-39 years (85 per 100K) but exceeded 50 per 100K in all age groups except children <10 years (34 per 100K), and adults 60-69 years (37 per 100K) and 70-79 years (34 per 100K).

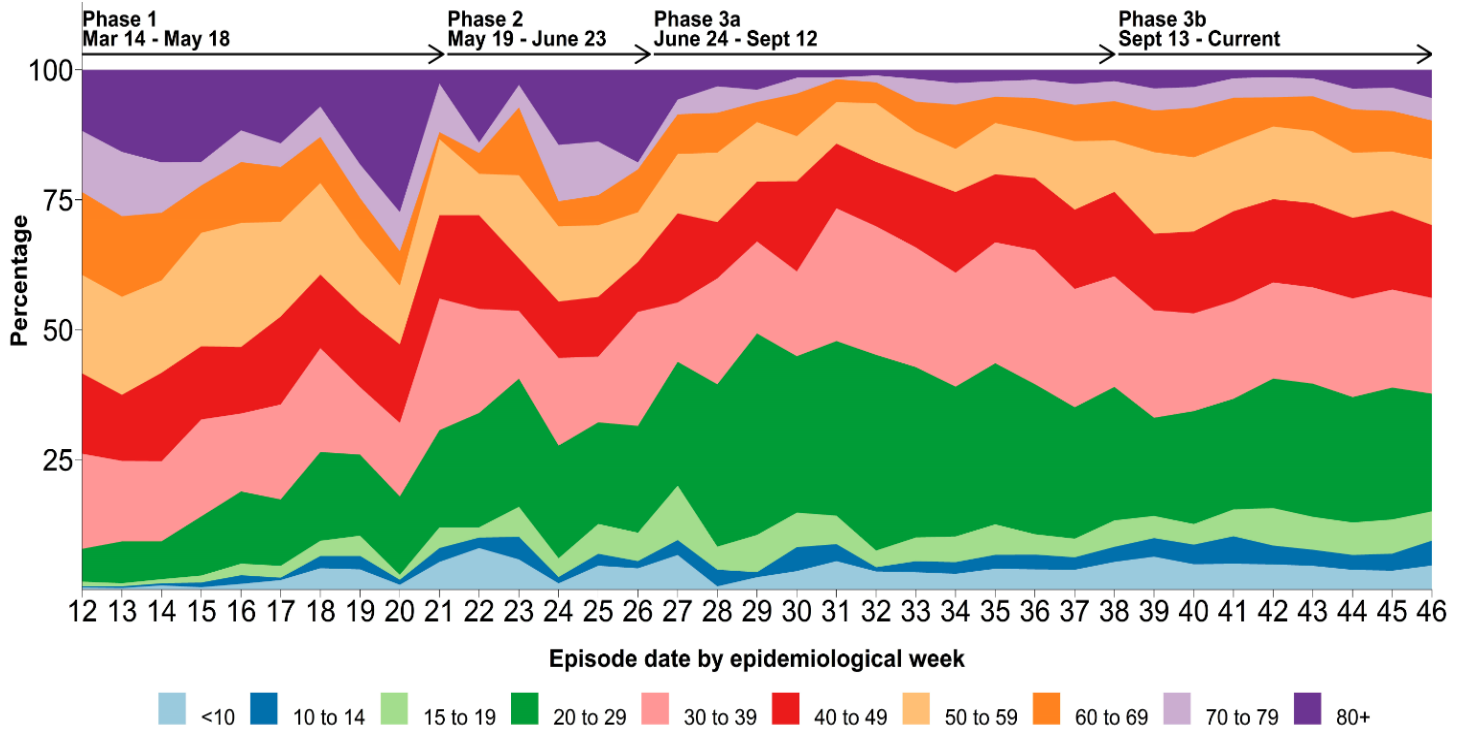
Median age of cases across the pandemic is 37 years: 52 years in Pre-/Phase 1; 40 years in Phase 2; 33 years in Phase 3a; 36 years for prior weeks 38-45 of Phase 3b (excluding week 46) and 36 years in week 46 (not shown).

**Figure 5. Average weekly SARS-CoV-2 testing rates and percent positive by age group and phase<sup>a</sup>, BC January 20, 2020 (week 4) – November 14, 2020 (week 46)<sup>b,c</sup>**

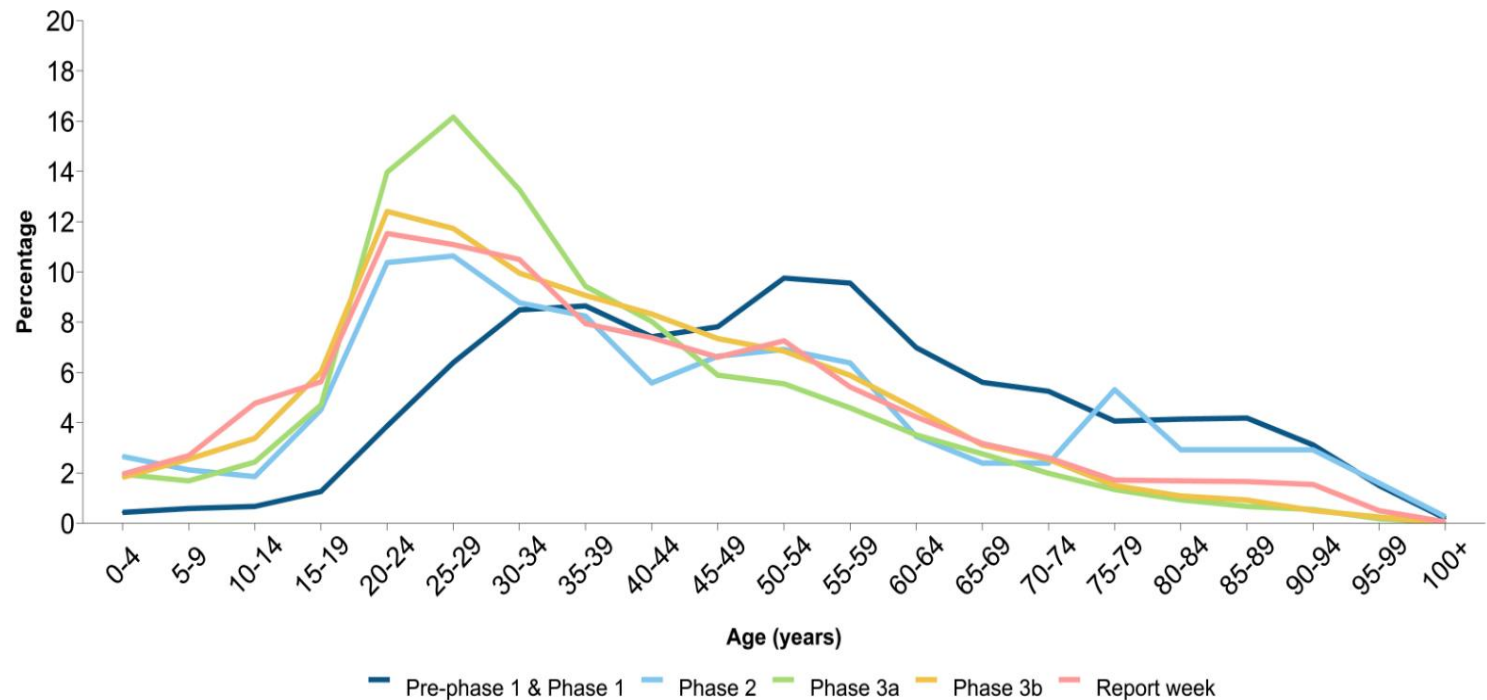


- Phase based on specimen collection date, of which January 20 was the earliest. The average weekly rate by phase is derived as the phase-specific per capita test rate divided by the number of weeks for Pre-Phase 1 + Phase 1 (P1: 17 weeks), Phase 2 (P2: 5 weeks), Phase 3a (P3a: 11.5 weeks), and Phase 3b, excluding the current report week (P3b: 8 weeks). The current report week, although part of Phase 3b, is excluded from derivations across prior weeks of Phase 3b to enable comparison, as displayed.
- PLOVER extract on November 18, 2020 reflecting all diagnostic laboratories in BC. Laboratory testing criteria: <http://www.bccdc.ca/health-info/diseases-conditions/covid-19/testing/phases-of-covid-19-testing-in-bc>.
- Among those with available age information only.

**Figure 6. COVID-19 case distribution by known age group (years) and episode date, BC March 15, 2020 (week 12) – November 14, 2020 (week 46) (N= 23,110)<sup>a</sup>**



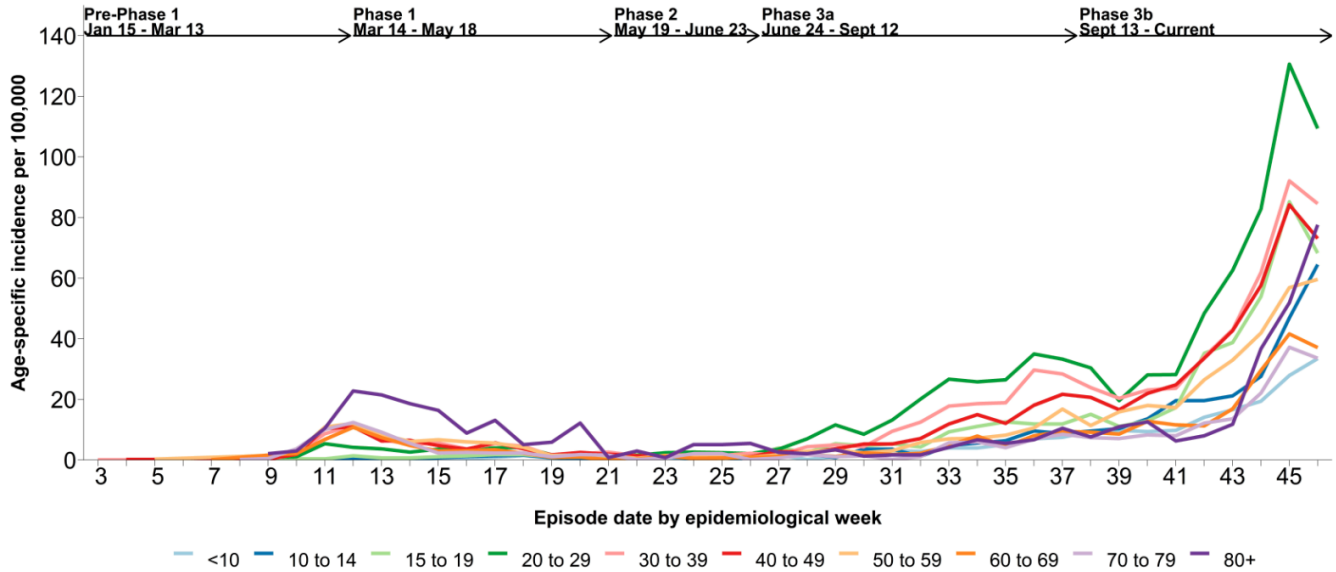
**Figure 7. COVID-19 case distribution by known age group (years) for pandemic phases and current report week<sup>b</sup>, BC January 15, 2020 (week 3) – November 14, 2020 (week 46) (N= 23,614)<sup>a</sup>**



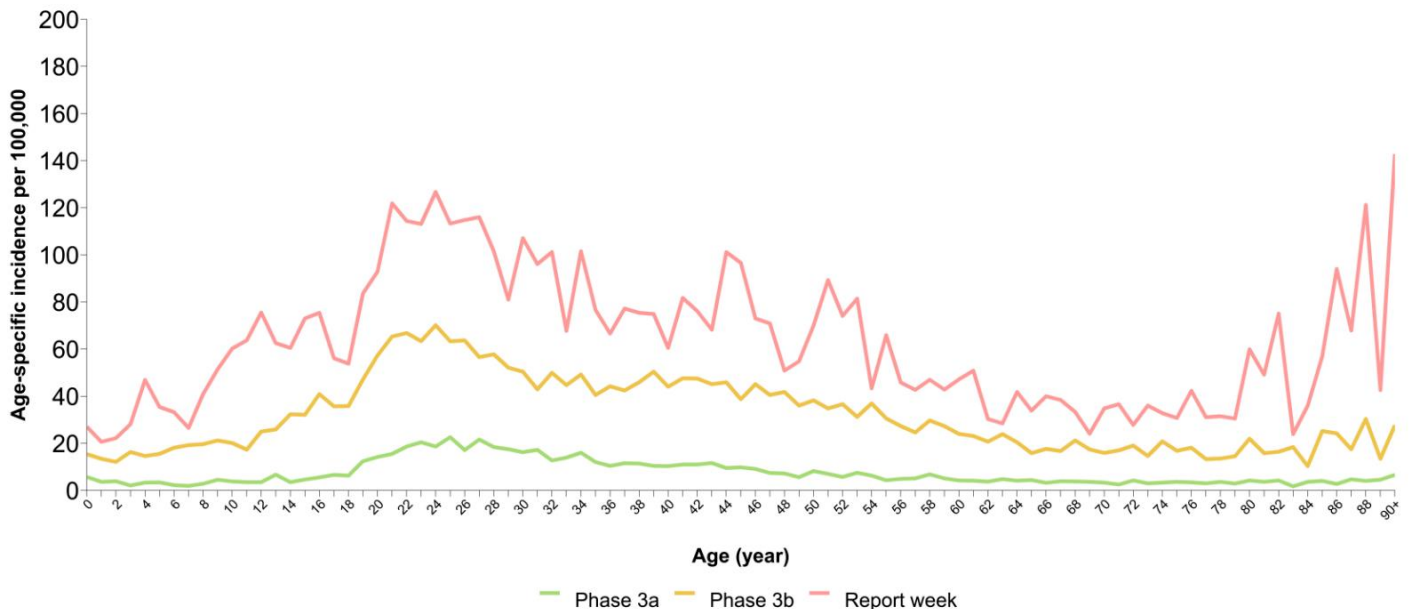
a. Among those with available age information only.

b. The current report week, although part of Phase 3b, is excluded from derivations across prior weeks of Phase 3b to enable comparison, as displayed.

**Figure 8. Weekly age-specific incidence per 100K population by epidemiological week, BC January 15, 2020 (week 3) – November 14, 2020 (week 46) (N= 23,614)<sup>a</sup>**



**Figure 9. Average weekly incidence per 100K population by single year of age for pandemic phases 3a and 3b and current report week 46<sup>b</sup>, BC January 15, 2020 (week 3) – November 14, 2020 (week 46) (N= 23,614)<sup>a</sup>**



a. Among those with available age information only.  
b. The current report week, although part of Phase 3b, is excluded from derivations across prior weeks of Phase 3b to enable comparison, as displayed.

### D. Severe outcome counts and epi-curve

There were 142 hospitalizations with known admission date (of 143 reported) in week 46 (Table 1), about one third higher than week 45 (109) or the first wave peak in hospital admissions in week 13 (Figure 10). In week 46 there were also 22 deaths recorded, an increase over week 45 (13) and a tally now approaching the first wave peak of 26 deaths in week 15. Of the 22 deaths in week 46, 14 were associated with a care facility outbreak and 17 were 70+ years old but the first COVID-19-associated death in BC under 40-years-old (i.e. 30-39 years) was also recorded. Of the 302 deaths in BC in total to date, about two-thirds (205) were associated with a care facility outbreak and 84% (255) were 70+ years old. Note, that with ongoing increase in cases, the ultimate timing of the second wave peak in severe outcomes has yet to be determined.

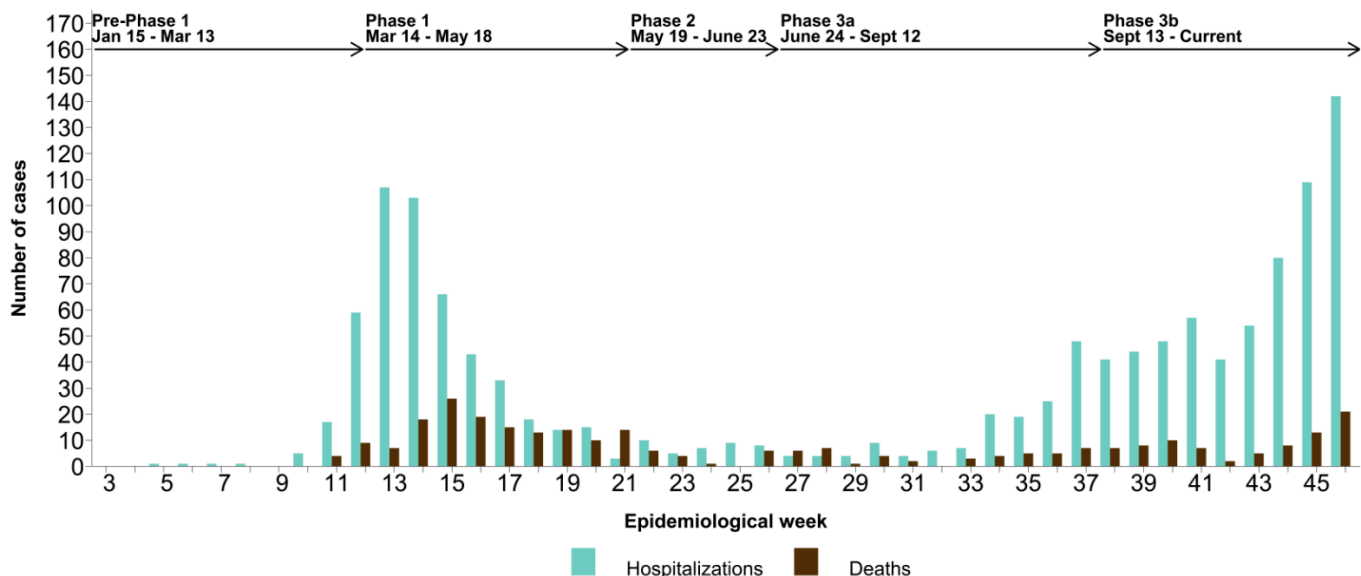
Overall, males comprise 12,028/23,590 (51%) cases, 767/1,302 (59%) hospitalizations, 236/381 (62%) ICU admissions and 176/302 (58%) deaths with known sex to date (not shown).

**Table 1. COVID-19 severe outcomes by episode date, health authority of residence, and phase, BC January 15, 2020 (week 3) – November 14, 2020 (week 46)**

Health authority of residence:	FHA	IHA	VIHA	NHA	VCHA	Outside Canada	Total n/N (%)
<b>Ever Hospitalized</b>	<b>751</b>	<b>50</b>	<b>27</b>	<b>44</b>	<b>425</b>	<b>7</b>	<b>1,304/23,652 cases (6)<sup>a</sup></b>
Pre-Phase 1 & Phase 1 (17 weeks)	245	29	25	12	179	2	492/1,304 (38)
Phase 2 (5 weeks)	26	1	0	2	6	1	36/1,304 (3)
Phase 3a (11.5 weeks)	98	5	0	10	40	2	155/1,304 (12)
Phase 3b (8 weeks, excluding week 46)	277	12	1	12	175	1	478/1,304 (37)
Week 46	105	3	1	8	25	1	143/1,304 (11)
<b>Ever ICU</b>	<b>185</b>	<b>17</b>	<b>9</b>	<b>27</b>	<b>141</b>	<b>2</b>	<b>381/23,652 cases (2)<sup>a</sup></b>
Pre-Phase 1 & Phase 1 (17 weeks)	76	13	9	7	67	1	173/381 (45)
Phase 2 (5 weeks)	6	0	0	1	2	0	9/381 (2)
Phase 3a (11.5 weeks)	25	1	0	7	15	1	49/381 (13)
Phase 3b (8 weeks, excluding week 46)	60	3	0	4	49	0	116/381 (30)
Week 46	18	0	0	8	8	0	34/381 (9)
<b>Deaths</b>	<b>140</b>	<b>3</b>	<b>6</b>	<b>5</b>	<b>148</b>	<b>0</b>	<b>302/23,652 cases (1)<sup>a</sup></b>
Pre-Phase 1 & Phase 1 (17 weeks)	55	2	5	0	83	0	145/302 (48)
Phase 2 (5 weeks)	22	0	0	0	5	0	27/302 (9)
Phase 3a (11.5 weeks)	20	0	0	1	25	0	46/302 (15)
Phase 3b (8 weeks, excluding week 46)	30	1	1	3	27	0	62/302 (21)
Week 46	13	0	0	1	8	0	22/302 (7)

a. Outcomes with unknown status are included in the denominators (i.e. assumed not to have the specified severe outcome).

**Figure 10. COVID-19 hospitalization admissions (n= 1,293) and deaths (n= 291), BC January 15, 2020 (week 3) – November 14, 2020 (week 46)**





**E. Age profile, severe outcomes**

As shown in [Table 2](#) and [Figure 11](#), elderly adults 70+ years comprise 9% of COVID-19 cases, commensurate with their share of the general population of BC (13%), but are greatly over-represented among hospitalizations (42%) and deaths (84%).

Older adults 60-69 years comprise 8% of COVID-19 cases, and a greater proportion of hospitalizations (18%) but a commensurate proportion of deaths (10%) relative to their share of the BC population (13%).

Adults 40-59 years comprise 28% of COVID-19 cases and 26% of hospitalizations, which is commensurate with their share of the BC population (27%), but they are under-represented among COVID-19 deaths (5%).

Adults 20-39 years comprise a greater share of COVID-19 cases (44%) than their share of the BC population (28%), but are under-represented among COVID-19 hospitalizations (13%) and deaths (<1%).

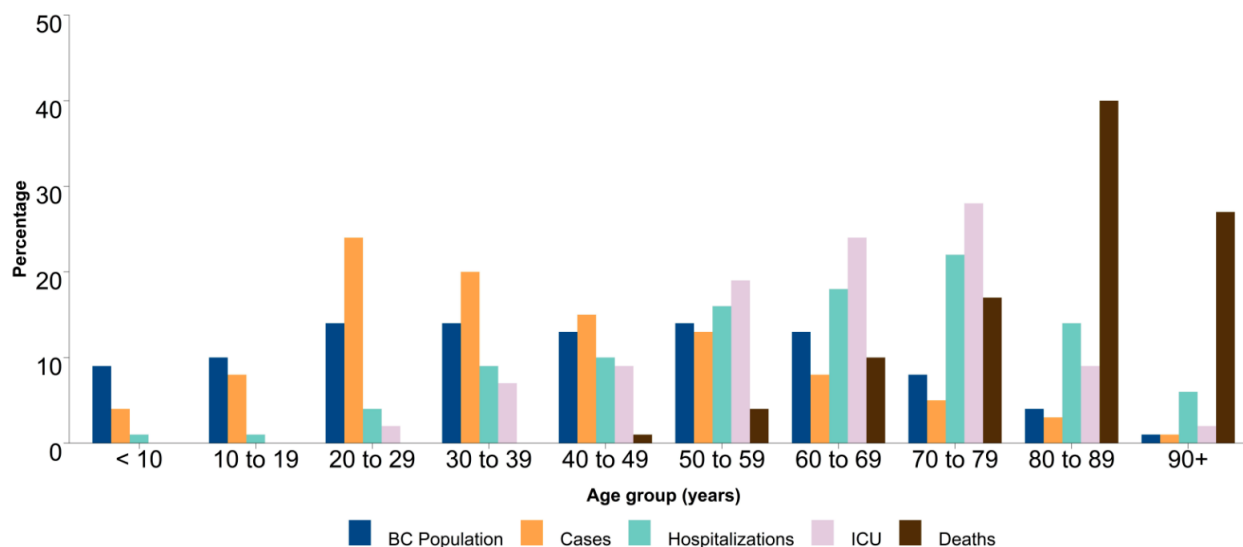
Children <20 years are under-represented overall among COVID-19 cases (12%) as well as severe outcomes (2% or less), relative to their share of the BC general population (19%).

Median age after vs. before Phase 3a is younger for hospitalizations (62 vs. 69 years) but unchanged for deaths (85 vs. 85 years).

**Table 2. Age distribution<sup>a</sup>: COVID-19 cases, hospitalizations, ICU admissions, deaths and BC population January 15, 2020 (week 3) – November 14, 2020 (week 46)**

Age group (years)	Cases n (%)	Hospitalizations n (%)	ICU n (%)	Deaths n (%)	General BC population n (%)
<10	926 (4)	13 (1)	0 (0)	0 (0)	469,351 (9)
10-19	1,947 (8)	11 (1)	0 (0)	0 (0)	527,805 (10)
20-29	5,590 (24)	55 (4)	9 (2)	0 (0)	697,691 (14)
30-39	4,606 (20)	112 (9)	25 (7)	1 (<1)	735,052 (14)
40-49	3,541 (15)	124 (10)	34 (9)	4 (1)	646,035 (13)
50-59	3,052 (13)	214 (16)	72 (19)	11 (4)	718,272 (14)
60-69	1,853 (8)	234 (18)	93 (24)	31 (10)	673,131 (13)
70-79	1,079 (5)	282 (22)	106 (28)	52 (17)	435,062 (8)
80-89	675 (3)	185 (14)	35 (9)	121 (40)	187,443 (4)
90+	345 (1)	73 (6)	7 (2)	82 (27)	49,726 (1)
<b>Total</b>	<b>23,614</b>	<b>1,303</b>	<b>381</b>	<b>302</b>	<b>5,139,568</b>
<b>Median age</b>	<b>37</b>	<b>64</b>	<b>65</b>	<b>85</b>	<b>41</b>

**Figure 11. COVID-19 cases, hospitalizations, ICU admissions and deaths by age group, BC January 15, 2020 (week 3) – November 14, 2020 (week 46) (N=23,614)<sup>a</sup>**



a. Among those with available age information only.

**F. Likely sources of infection**

As shown in [Table 3](#) and [Figure 12](#), local contact with a known case or cluster has most often been considered the source of infection across all pandemic phases to date.

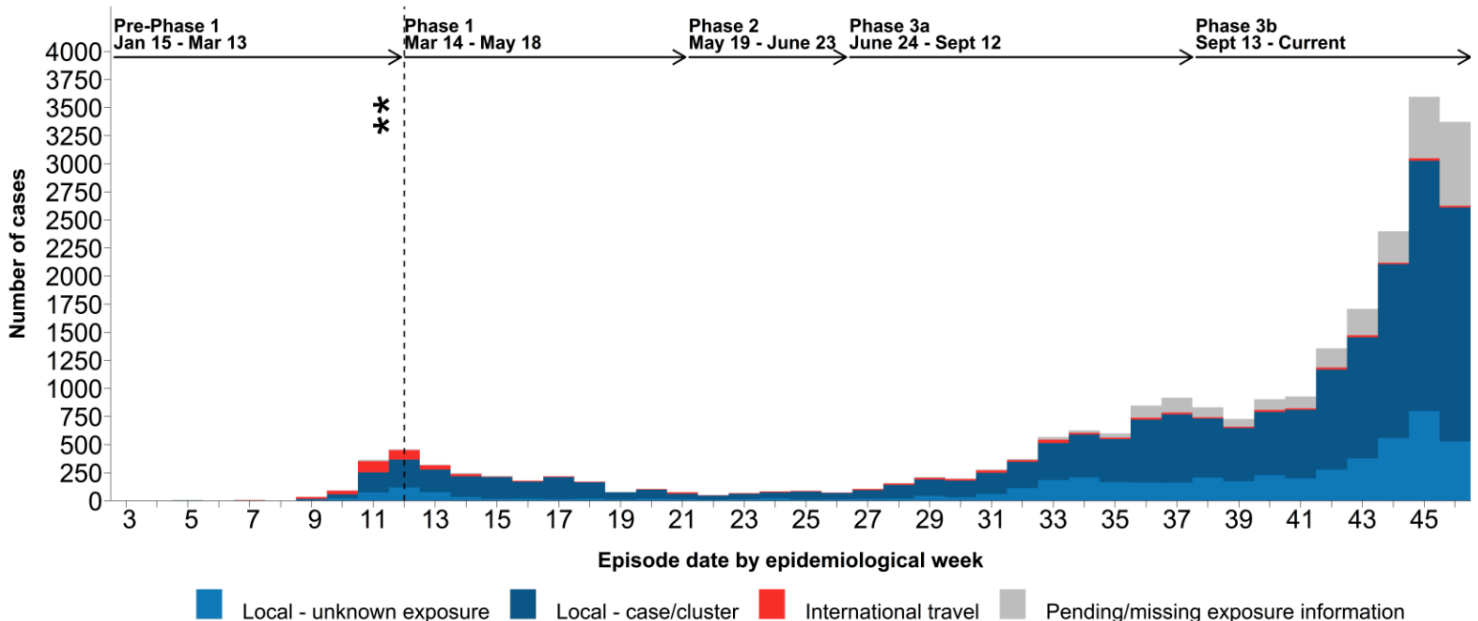
Prior to Phase 1, international travel was also a frequently cited source of SARS-CoV-2 infection in part reflecting high risk testing that targeted returning travelers. However, travel-related restrictions introduced in Phase 1 limited that contribution thereafter with clusters, such as in care facility settings, becoming a more prominent source.

Since around mid-Phase 3a more cases have cited unknown local exposure or that information remained pending or missing. International travel has been cited less often since Phase 3b and these patterns have been generally maintained through week 46.

**Table 3. Likely source of COVID-19 infection by pandemic phase of episode date, British Columbia January 15, 2020 (week 3) – November 14, 2020 (week 46)**

Phase n (row %)	International travel	Local – case/cluster	Local - unknown	Pending/missing
Pre-Phase 1	135 (30)	208 (46)	96 (21)	14 (3)
Phase 1	188 (9)	1,499 (72)	350 (17)	42 (2)
Phase 2	30 (8)	262 (70)	82 (22)	2 (1)
Phase 3a	181 (4)	3,208 (65)	1,174 (24)	356 (7)
Phase 3b (excluding week 46)	120 (1)	7,921 (64)	2,821 (23)	1,590 (13)
Week 46	15 (<1)	2,082 (62)	529 (16)	747 (22)
<b>Total</b>	<b>669 (3)</b>	<b>15,180 (64)</b>	<b>5,052 (21)</b>	<b>2,751 (12)</b>

**Figure 12. Likely source of COVID-19 infection by episode date, British Columbia January 15, 2020 (week 3) – November 14, 2020 (week 46)**



\*\* March 16: Travel related restrictions introduced.

### G. Care facility outbreaks

As shown in [Table 4](#) and [Figure 13](#) 162 care facility outbreaks were reported in total in BC to the end of week 46. There were 22 new care facility outbreaks reported in week 46 (13 of which were reported by Fraser Health Authority, 5 by VCHA, 3 by IHA, and 1 by VIHA), with 11 of these outbreaks having earliest onset date in preceding weeks. Facility outbreak tallies by earliest onset date are highest thus far in week 45 (16 outbreaks).

Fourteen of the 22 deaths in total reported in week 46 in BC involved adults in a care facility setting in Fraser Health Authority (9 deaths), Vancouver Coastal Health Authority (4 deaths) or Northern Health Authority (1 death). Thirteen of these 14 deaths were elderly adults 70+ years.

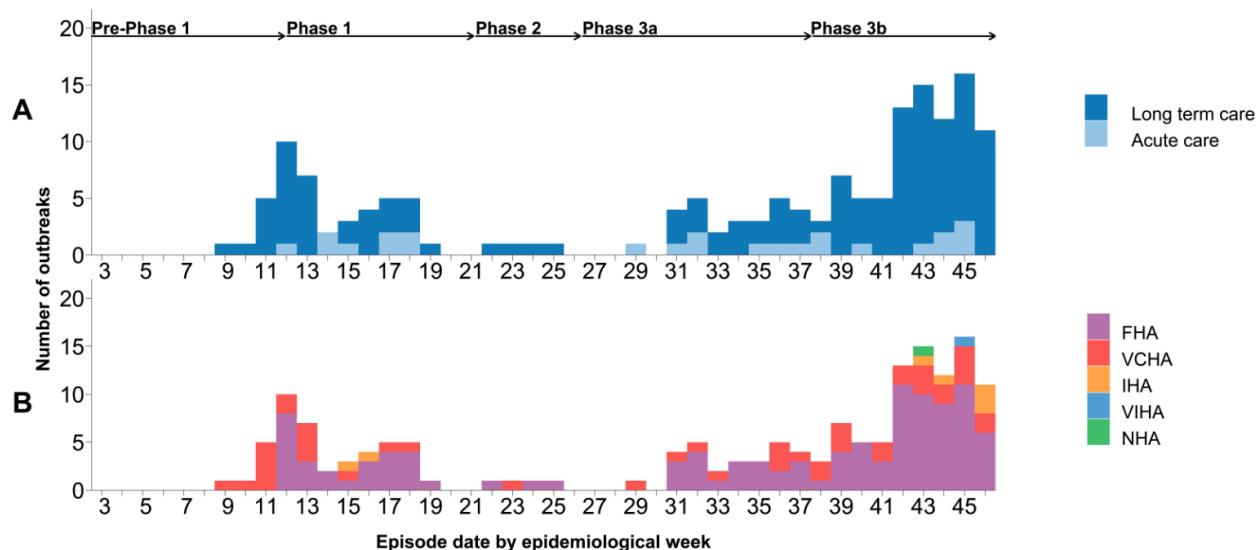
Of 15,825 cases overall in BC with episode date in Phase 3b (i.e. weeks 38-46), 773 (5%) were associated with a care facility outbreak, a proportion similar to Phase 3a overall (184/4,919; 4%), but lower than before Phase 3a (613/2,908; 21%).

More than two-thirds of all COVID-19 deaths in BC have been associated with care facility outbreaks (205/302; 68%) and of those, more than two-thirds occurred before Phase 3a (120/172; 70%).

**Table 4. COVID-19 care facility outbreaks<sup>a</sup> and associated cases and deaths by phase of episode date, BC January 15, 2020 (week 3) – November 14, 2020 (week 46) (N=162)**

	Outbreaks	Cases				Deaths		
		Residents	Staff/visitors	Unknown	Total	Residents	Staff/visitors	Total
<b>Total</b>	<b>162</b>	<b>890</b>	<b>672</b>	<b>8</b>	<b>1,570</b>	<b>205</b>	<b>0</b>	<b>205</b>
Pre-/Phase One (17 weeks)	44	331	213	0	544	96	0	96
Phase 2 (5 weeks)	4	51	18	0	69	24	0	24
Phase 3a (11.5 weeks)	27	91	93	0	184	39	0	39
Phase 3b (8 weeks, excluding week 46)	76	259	246	5	510	32	0	32
Week 46	11	158	102	3	263	14	0	14
Active outbreaks <sup>b</sup>	47	-	-	-	-	-	-	-
Outbreaks declared over <sup>b</sup>	115	-	-	-	-	-	-	-

**Figure 13. COVID-19 care facility outbreaks<sup>a</sup> by earliest case onset<sup>c</sup>, facility type (A) and health authority<sup>d</sup> (B), BC January 15, 2020 (week 3) – November 14, 2020 (week 46) (N=162)**



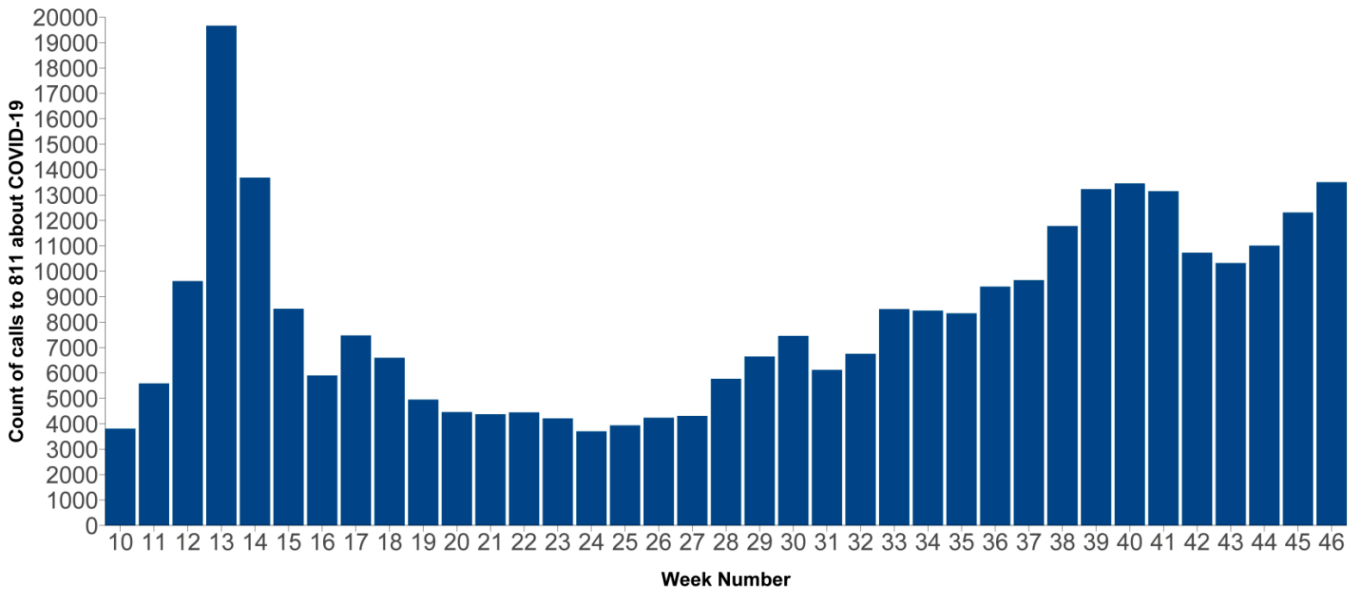
- a. Long term care facilities include: group homes (community living), independent living, assisted living, and other residential facilities. Care facility (acute/long-term care/independent living) outbreaks have at least one lab-confirmed COVID-19 staff or resident.
- b. As of November 14, 2020
- c. Earliest dates of onset of outbreak cases are subject to change as investigations and data are updated.
- d. FHA=Fraser; VCHA=Vancouver Coastal; IHA=Interior; VIHA=Vancouver Island; NHA=Northern Health Authorities

## H. Clinical indicators

HealthLink calls ([Figure 14](#)) related to COVID-19 have shown an overall increasing trend from week 32 to 40 at ~13,500 calls per week but decreasing in later weeks reaching >10,000 calls in 43. Calls have gradually increased thereafter, reaching ~13,500 calls once again in week 46.

BC Medical Services Plan (MSP) general practitioner claims ([Figure 15](#)) related to COVID-19 (including telehealth billings) showed slight increase from week 37 reaching >5,000 visits in week 40 but decreasing thereafter to around 3,200 visits in weeks 42 and 43, before increasing again in weeks 44 to 46 to ~4,200.

**Figure 14. HealthLink BC calls related to COVID-19, BC  
March 1, 2020 (week 10) – November 14, 2020 (week 46)**



**Figure 15. Medical Service Plan (MSP) claims (including telehealth billings) for COVID-19, BC  
March 1, 2020 (week 10) – November 14, 2020 (week 46)**

