



Weekly Reporting of COVID-19 Cases, Hospitalizations, and Deaths

Data up to April 30, 2022

Section A: Numbers for COVID-19 Cases, Hospitalizations, and Deaths

Table 1: Weekly Reporting of COVID-19 Cases, Hospitalizations, and Deaths¹

	Health Authority					Total	
	FHA	IHA	NHA	VCH	VIHA		
Cases reported							
Apr. 24 - Apr. 30	867	526	128	383	379	2,283	
Apr. 17 - Apr. 23	831	575	118	373	372	2,269	
Hospital admissions							
Apr. 24 - Apr. 30 ³	157	55	20	90	53	375	
Apr. 17 - Apr. 23	175	75	24	75	69	418	
30-day all-cause mortality²							
Apr. 24 - Apr. 30 ³	10	15	1	9	15	50	
Apr. 17 - Apr. 23	17	19	2	13	15	66	
Apr. 10 - Apr. 16	15	12	3	14	13	57	

¹ Numbers provided for previous weeks may differ from week to week as data become more complete and are updated over time.

² Includes COVID-19 and non-COVID-19 related deaths occurring within 30 days from a positive lab result. See Data Notes for more information.

³ Numbers in grey area are expected to increase as data become more complete.

Table 2: Cumulative totals¹ of COVID-19 Cases, Hospitalizations, and Deaths

	Health Authority					OOC ²	Total
	FHA	IHA	NHA	VCH	VIHA		
Cases reported							
	161,720	64,991	29,943	73,648	34,884	391	365,577
Hospital admissions							
	9,884	3,763	1,936	4,182	1,813	17	21,595
30-day all-cause mortality³							
Pre-transition (case linelist)	1,348	367	330	716	241	0	3,002
Post-transition (automated linkage)	56	61	7	44	56	0	224

¹ COVID-19 surveillance in BC began in January 2020. The transition to weekly reporting on April 2, 2022 corresponded to changes in data sources. See Data Notes for more information.

² OOC = Out of country

³ See Data Notes for more information.



Section B: Data Notes

- **Cases.** Total [COVID-19 cases](#) include lab-confirmed, lab-probable and epi-linked cases. From January 2020 to April 1, 2022 cases included those reported by the health authorities and positive laboratory results in the Provincial Laboratory Information Solution or Sunquest. As of April 2, 2022 only cases with positive laboratory results in the Provincial Laboratory Information Solution or Sunquest are included. The number of cases is reported by the day of their lab result.
- From January 2020 to April 1, 2022 cases were reported by health authority of residence or reporting health authority; cases whose primary residence is outside of Canada were reported as “Out of Canada”. As of April 2, 2022 health authority is based on the case’s address provided during lab testing and cases from outside of BC are not included. Please note that the health authority of residence and the health authority reporting the case do not necessarily indicate the location of exposure or transmission.
- **Hospitalizations.** From January 2020 to April 1, 2022, hospitalizations include those reported by the health authorities. As of April 2, 2022, hospitalizations are defined as those individuals who had any COVID-19 hospitalization recorded in the Provincial Health Services Authority’s Provincial COVID-19 Monitoring Solution. Single day episodes (e.g. admission, discharge on same date) are excluded. Hospital admissions is reported by date of admission.
- **Deaths.** From January 2020 to April 1, 2022, deaths include those reported by the health authorities. As of April 2, 2022, deaths are any COVID-19 lab positive cases who have died from any cause (COVID-19 or non-COVID-19, as recorded in Vital Statistics, BC Ministry of Health) within 30 days of their first positive lab result date. Death is reported by date of death. All-cause mortality is being used because cause of death takes approximately 8 weeks to be recorded. Retrospective evaluations of underlying cause of death will be done by the BCCDC, in addition to the data provided in this report, to better understand true COVID-19 mortality. .
- Hospitalizations and deaths may be incomplete (i.e. under-estimated) in the most recent weeks owing to the data systems timing and processes.
- Numbers provided for previous weeks may differ from week to week as data become more complete and are updated over time.
- Provincial BCCDC COVID-19 products provide information on cases, hospitalizations and deaths:
 - [BCCDC COVID data trends](#) – Main webpage for dashboards, reports and maps related to COVID-19.
 - [BC COVID-19 Dashboard](#) – Provincial and health authority level reporting of case incidence, death, hospitalization and laboratory data.
 - [BCCDC Regional Surveillance Dashboard](#) – Provincial and regional reporting of case, hospitalization, critical care, and vaccine data, including interactive maps.
 - [BCCDC COVID-19 Epi App](#) – Case incidence, death, hospitalization, laboratory and limited vaccine data for regional and global comparisons.
 - [Situation Report](#) – provides a more in-depth look at COVID-19 epidemiology, data and key trends including wastewater surveillance and MIS-C.
 - [Variant report](#) – Information on variants in BC.
- The [BCCDC Mortality App](#) reports on all-cause deaths in the province, including COVID-19.



Section C: Supplementary Figures

Figure 1: 7-Day Average Count of COVID-19 Cases, Hospitalizations, and Deaths by age groups

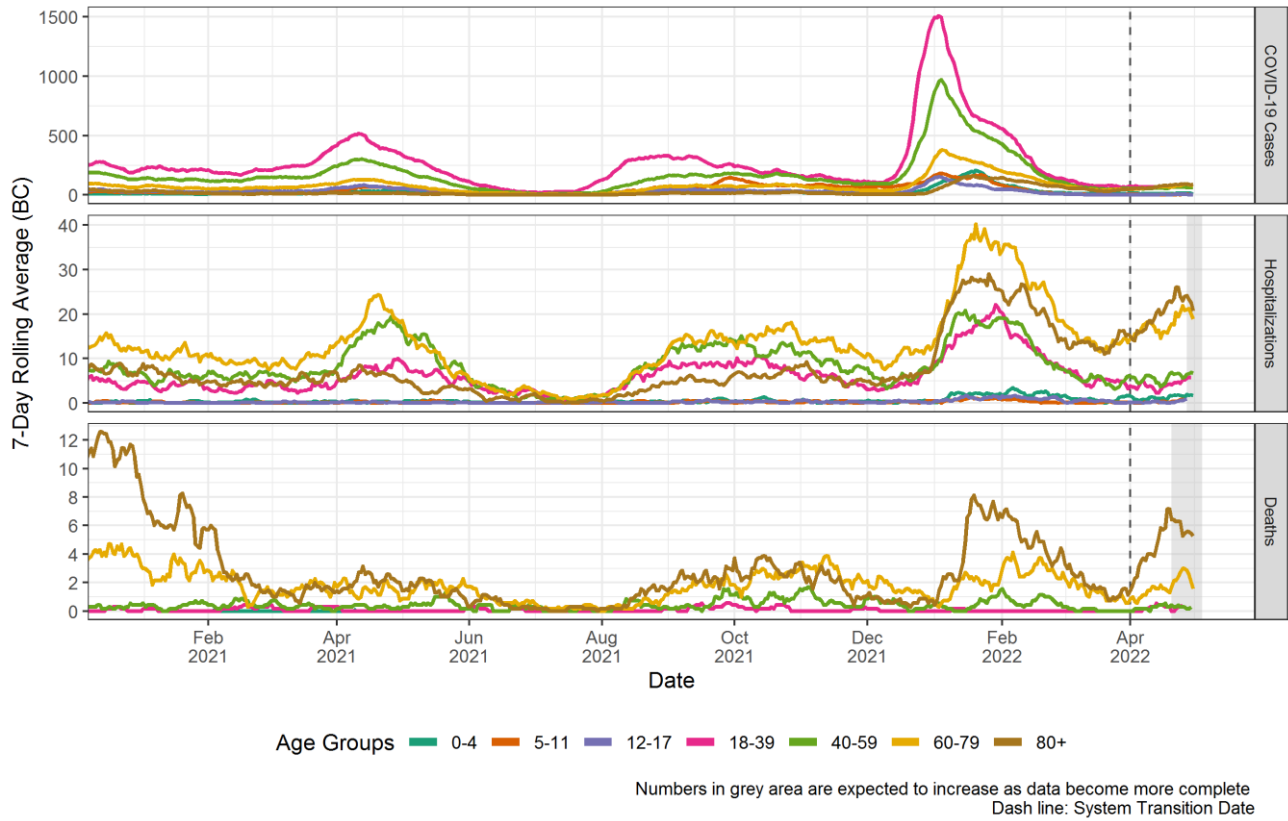


Figure 2: 7-Day Average Count of COVID-19 Cases, Hospitalizations, and Deaths by Health Authority

