



Weekly Reporting of COVID-19 Cases, Hospitalizations, and Deaths

Data up to July 16, 2022

Section A: Numbers for COVID-19 Cases, Hospitalizations, and Deaths

Table 1: Weekly Reporting of COVID-19 Cases, Hospitalizations, and Deaths¹

		Health Authority					Total
		FHA	IHA	NHA	VCH	VIHA	
Cases reported							
	Jul. 10 - Jul. 16	384	143	50	259	208	1,044
	Jul. 03 - Jul. 09	384	111	65	223	190	973
Hospital admissions							
	Jul. 10 - Jul. 16 ³	104	27	10	61	44	246
	Jul. 03 - Jul. 09	121	26	12	62	41	262
30-day all-cause mortality²							
	Jul. 10 - Jul. 16 ³	9	3	0	2	7	21
	Jul. 03 - Jul. 09	17	3	2	3	4	29
	Jun. 26 - Jul. 02	16	6	0	8	5	35

¹ Numbers provided for previous weeks may differ from week to week as data become more complete and are updated over time.

² Includes COVID-19 and non-COVID-19 related deaths occurring within 30 days from a positive lab result. See Data Notes for more information.

³ Numbers in grey area are expected to increase as data become more complete.

Table 2: Cumulative totals¹ of COVID-19 Cases, Hospitalizations, and Deaths

		Health Authority					OOC ²	Total
		FHA	IHA	NHA	VCH	VIHA		
Cases reported								
		166,150	67,071	30,594	76,147	37,019	391	377,372
Hospital admissions								
		11,647	4,232	2,093	5,001	2,464	17	25,454
30-day all-cause mortality³								
	Pre-transition (case linelist)	1,348	367	330	716	241	0	3,002
	Post-transition (automated linkage)	291	181	30	188	163	0	853

¹ COVID-19 surveillance in BC began in January 2020. The transition to weekly reporting on April 2, 2022 corresponded to changes in data sources. See Data Notes for more information.

² OOC = Out of country

³ See Data Notes for more information.



Section B: Data Notes

- **Cases.** Total [COVID-19 cases](#) include lab-confirmed, lab-probable and epi-linked cases. From January 2020 to April 1, 2022 cases included those reported by the health authorities and positive laboratory results in the Provincial Laboratory Information Solution or Sunquest. As of April 2, 2022 only cases with positive laboratory results in the Provincial Laboratory Information Solution or Sunquest are included. The number of cases is reported by the day of their lab result.
- From January 2020 to April 1, 2022 cases were reported by health authority of residence or reporting health authority; cases whose primary residence is outside of Canada were reported as “Out of Canada”. As of April 2, 2022 health authority is based on the case’s address provided during lab testing and cases from outside of BC are not included. Please note that the health authority of residence and the health authority reporting the case do not necessarily indicate the location of exposure or transmission.
- **Hospitalizations.** From January 2020 to April 1, 2022, hospitalizations include those reported by the health authorities. As of April 2, 2022, hospitalizations are defined as those individuals who had any COVID-19 hospitalization recorded in the Provincial Health Services Authority’s Provincial COVID-19 Monitoring Solution. Single day episodes (e.g. admission, discharge on same date) are excluded. Hospital admissions is reported by date of admission.
- **Deaths.** From January 2020 to April 1, 2022, deaths include those reported by the health authorities. As of April 2, 2022, deaths are any COVID-19 lab positive cases who have died from any cause (COVID-19 or non-COVID-19, as recorded in Vital Statistics, BC Ministry of Health) within 30 days of their first positive lab result date. Death is reported by date of death. All-cause mortality is being used because cause of death takes approximately 8 weeks to be recorded. Retrospective evaluations of underlying cause of death will be done by the BCCDC, in addition to the data provided in this report, to better understand true COVID-19 mortality.
- Hospitalizations and deaths may be incomplete (i.e. under-estimated) in the most recent weeks owing to the data systems timing and processes.
- Numbers provided for previous weeks may differ from week to week as data become more complete and are updated over time.
- Provincial BCCDC COVID-19 products provide information on cases, hospitalizations and deaths:
 - [BCCDC COVID data trends](#) – Main webpage for dashboards, reports and maps related to COVID-19.
 - [BC COVID-19 Dashboard](#) – Provincial and health authority level reporting of case incidence, death, hospitalization and laboratory data.
 - [BCCDC Regional Surveillance Dashboard](#) – Provincial and regional reporting of case, hospitalization, critical care, and vaccine data, including interactive maps.
 - [BCCDC COVID-19 Epi App](#) – Case incidence, death, hospitalization, laboratory and limited vaccine data for regional and global comparisons.
 - [Situation Report](#) – provides a more in-depth look at COVID-19 epidemiology, data and key trends including wastewater surveillance and MIS-C.
 - [Variant report](#) – Information on variants in BC.
- The [BCCDC Mortality App](#) reports on all-cause deaths in the province, including COVID-19.



Section C: Supplementary Figures

Figure 1: 7-Day Average Count of COVID-19 Cases, Hospitalizations, and Deaths by age groups

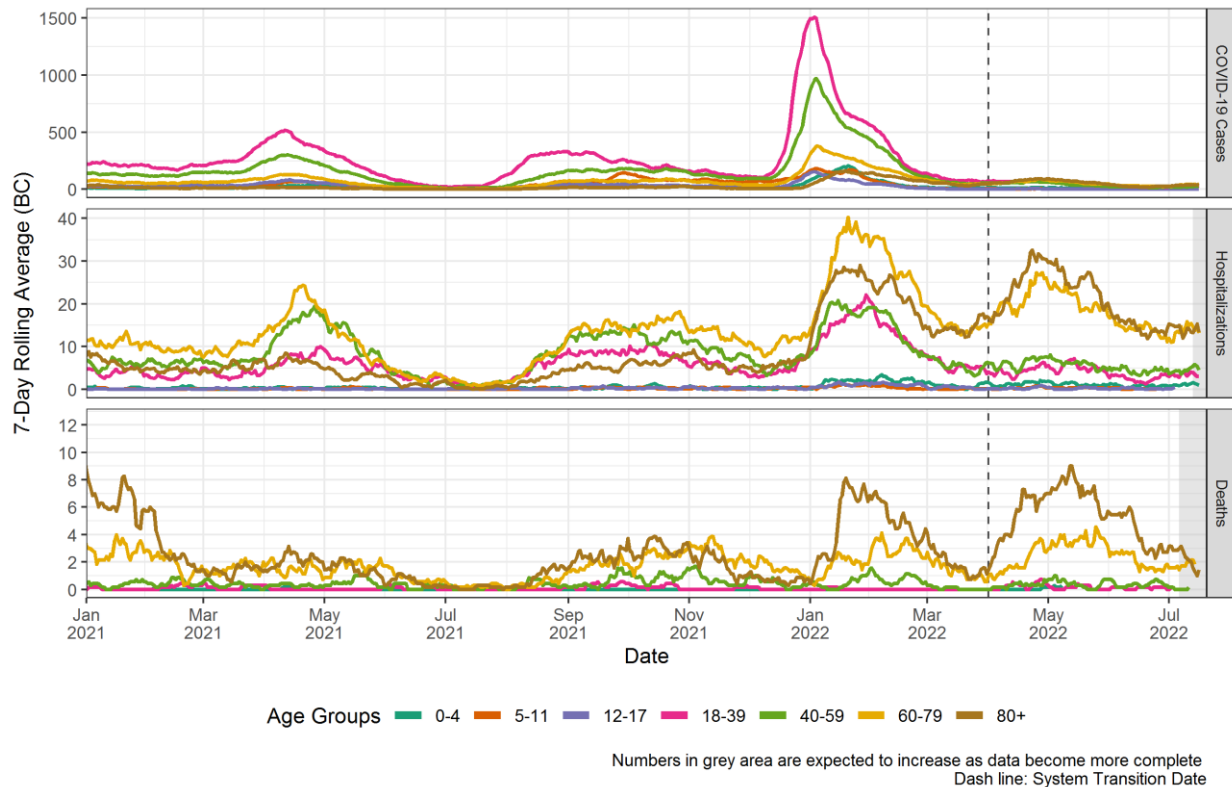


Figure 2: 7-Day Average Count of COVID-19 Cases, Hospitalizations, and Deaths by Health Authority

