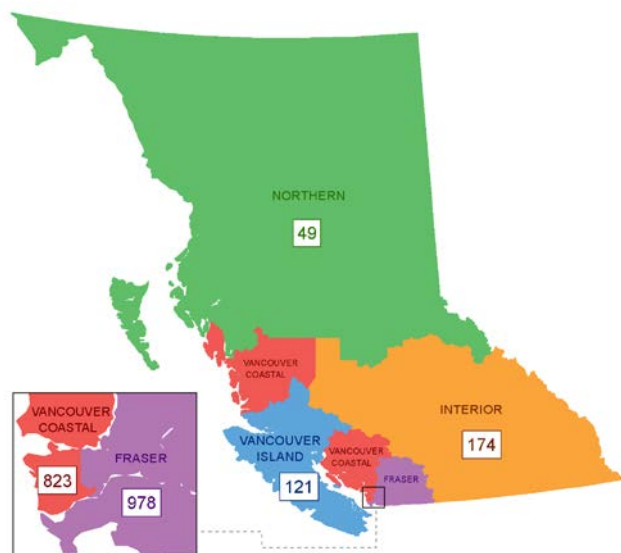


**British Columbia COVID-19 Daily Situation Report, May 1, 2020\***

**Figure 1:** Map of COVID-19 confirmed cases reported by health authority, BC, January 1 – May 1, 2020 (N=2,145)



**Key messages**

- The number of reported cases varied recently but has been higher than in early April (Table 1, Fig 2).
- The increase may be associated with the increased number of lab tests (Fig 3) and recently reported outbreaks (Fig 5, Table 2).
- Lab testing positivity has decreased since April 21 (Fig 3).
- The increase in reported cases has not yet led to an increase in hospitalisations or critical care admissions (Fig 4, 9, 10).
- There are very few recent cases without a known source of infection and no travel-related cases reported in the last 2 weeks (Fig 8).

**Table 1:** Epidemiological profile of reported cases by health authority, BC, January 1 – May 1, 2020 (N=2,145)

	Fraser	Interior	Vancouver Island	Northern	Vancouver Coastal	Total N (%) <sup>a</sup>
<b>Total number of cases</b>	<b>978</b>	<b>174</b>	<b>121</b>	<b>49</b>	<b>823</b>	<b>2,145</b>
<b>New cases since yesterday</b>	<b>17</b>	<b>4</b>	<b>1</b>	<b>3</b>	<b>8</b>	<b>33</b>
Median age in years, cases <sup>b</sup>	52	48	52	44	56	53 years (range 0-102y)
Female sex, cases	474	86	66	30	459	1,115/2,142 (52%)
<b>Cumulative incidence per 100,000 population</b>	<b>51</b>	<b>22</b>	<b>14</b>	<b>16</b>	<b>66</b>	<b>42</b>
<b>Ever hospitalized<sup>c</sup></b>	<b>218</b>	<b>29</b>	<b>25</b>	<b>11</b>	<b>152</b>	<b>435 (20%)</b>
Median age in years, ever hospitalized <sup>b</sup>	71	62	72	47	70	69 years (range 0-98y)
Currently hospitalized <sup>c</sup>	40	4	3	3	29	79
<b>Currently in critical care<sup>d</sup></b>	<b>11</b>	<b>1</b>	<b>0</b>	<b>1</b>	<b>11</b>	<b>24</b>
<b>Total number of deaths<sup>c</sup></b>	<b>34</b>	<b>2</b>	<b>4</b>	<b>0</b>	<b>72</b>	<b>112 (5%)</b>
<b>New deaths since yesterday</b>	<b>1</b>	<b>0</b>	<b>0</b>	<b>0</b>	<b>0</b>	<b>1</b>
Median age in years, deaths <sup>b</sup>	82	73	86	NA	87	85 years (range 47-101y)
<b>Discontinued isolation<sup>e</sup></b>	<b>496</b>	<b>148</b>	<b>101</b>	<b>42</b>	<b>570</b>	<b>1,357 (63%)</b>

<sup>a</sup> Denominator for % derivation is total number of cases (N), except sex for which denominator is as specified for those with known information on sex.

<sup>b</sup> Median age is calculated based on those with known information for all, hospitalized, and deceased cases (n=2142, 435, and 112, respectively).

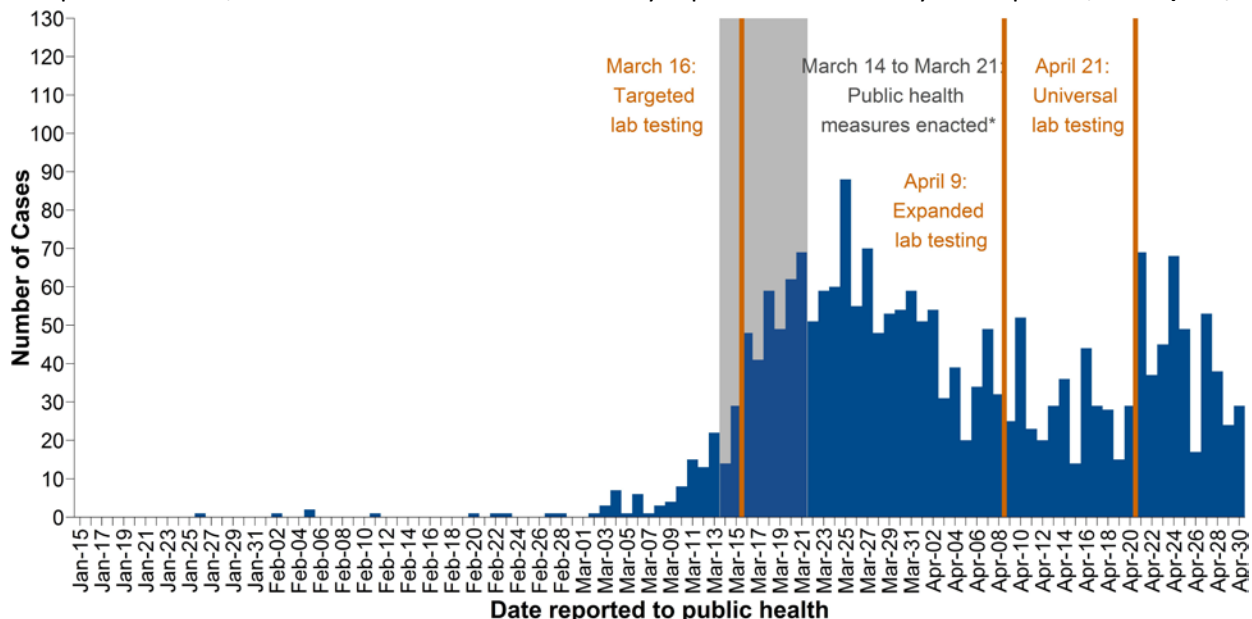
<sup>c</sup> Serious outcomes (i.e., hospitalization, death) may be incomplete or out of date (i.e., under-estimates) owing to the timing and process for case status update.

<sup>d</sup> Source: PHS May 1@10am. The number of COVID cases in critical care units is reported daily by each Health Authority and includes the number of COVID patients in all critical care beds (e.g., intensive care units; high acuity units; and other surge critical care spaces as they become available and/or required). Work is ongoing to improve the completeness and accuracy of the data reported.

<sup>e</sup> Self-isolation has been discontinued per the criteria outlined in [BC guidelines for public health management of COVID-19](#)

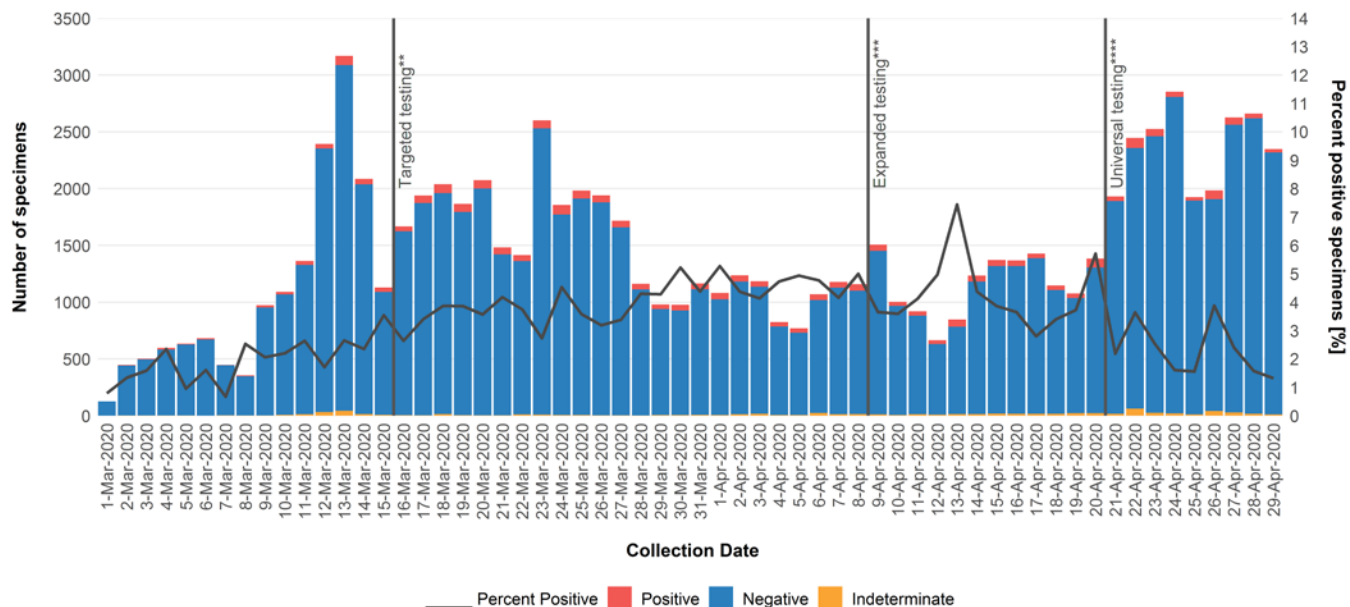
\*All findings are based on laboratory-confirmed cases reported from Health Authorities to BCCDC as of 10:00 AM PT, except where otherwise noted. Data represent a subset of actual cases and are subject to change with changes in testing recommendations and practices, reconciliation and/or as data become more complete.

**Figure 2: Epidemic curve, confirmed COVID-19 cases in BC by reported date January 15 – April 30, 2020 (N=2,145<sup>‡</sup>)**



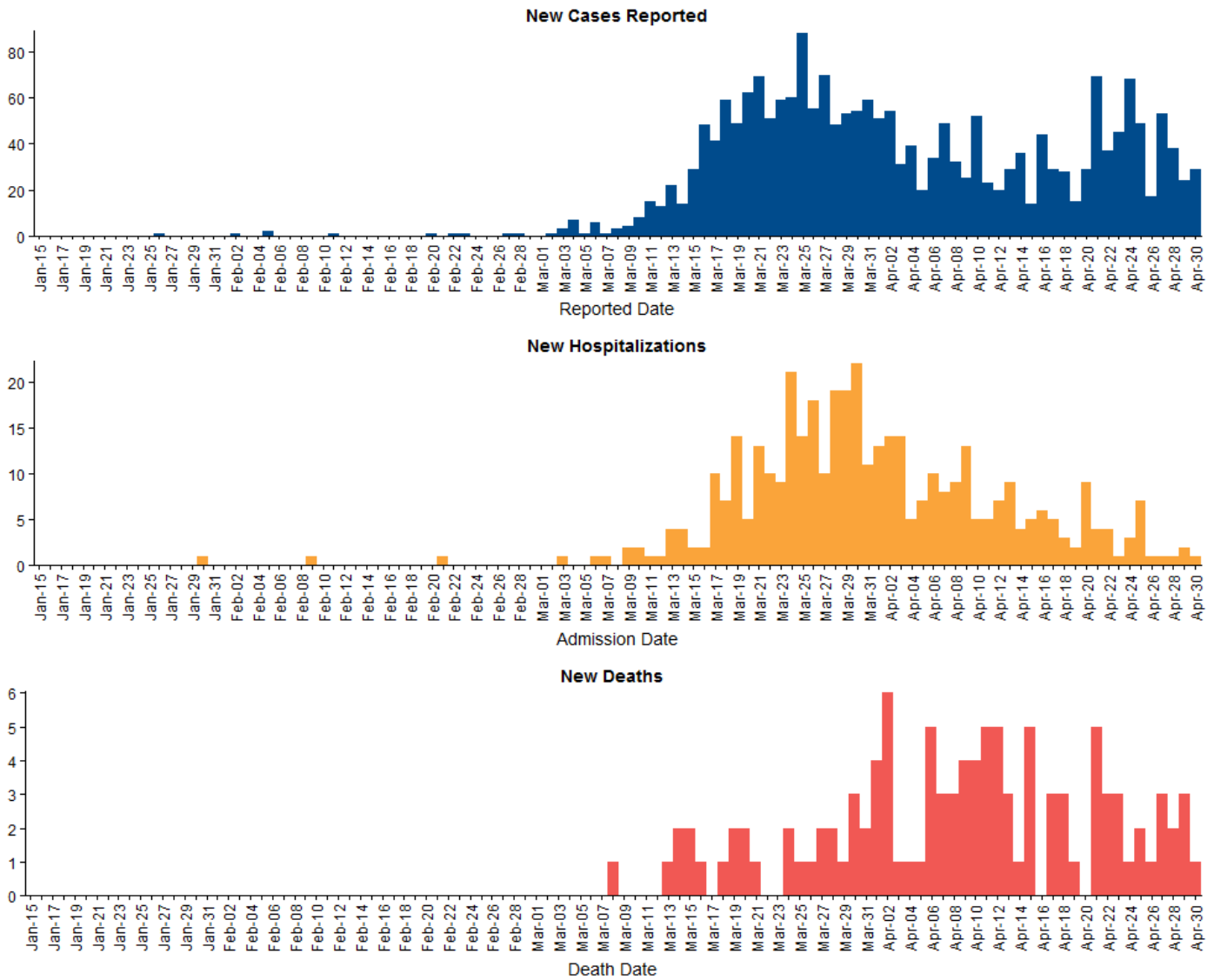
<sup>‡</sup> Cases reported on the same day as this report are excluded as only a portion are available at the time the data are extracted. The number of cases reported by day differs from that in Table 1 in previous reports as this figure reflects the date the case was lab-confirmed and reported to the Health Authority.  
 \*A number of public health measures were enacted during the week shaded in grey. These include: March 14: Spring break started for most schools; March 16: Mass gatherings public health order implemented (>50 people), entry of foreign nationals banned, symptomatic individuals banned from flights to Canada, international flights restricted to four national airports; March 17: BC public health emergency declared, traveller self-isolation public health order implemented; March 18: Provincial state of emergency declared, food and drink service restrictions public health order implemented; March 20: US/Canada border closed to non-essential travel; March 21: closure of personal service establishments. Please refer to footnote in Figure 3 for laboratory testing criteria changes.

**Figure 3: Number and proportion of SARS-CoV-2 positive respiratory specimens, BC, March 1 – April 29, 2020 (N=86,624; Positive=3.2%)**



Data source: PLOVER extract on May 1, 2020. Methods and caveats: SARS-CoV-2 specimens are tallied at the specimen level by date the specimen was collected. The proportion positive on a given date may include new positive cases and retested positive cases; this may over-estimate proportionate positivity. Similarly, individuals may be tested repeatedly after becoming negative; this may under-estimate proportionate positivity. \*\*As of March 16, testing guidelines included hospitalized patients, healthcare workers, long term care facility staff and residents, and those part of a cluster or outbreak who experienced respiratory symptoms. \*\*\*As of April 9, testing guidelines were expanded to include individuals with fever (>38°C) and cough or shortness of breath, including (a) residents of remote, isolated or Indigenous communities, (b) people living and working in congregate settings such as work-camps, correctional facilities, shelters, group homes, assisted living and seniors' residences, (c) people who are homeless or have unstable housing, (d) essential service providers (e.g. first responders), or (e) returning travellers identified at a point of entry to Canada. In addition, health care providers can order a COVID-19 test for any patient based on their clinical judgment. \*\*\*\*As of Apr 21, the testing guidelines were further expanded to include all individuals with new respiratory or systemic symptoms compatible with COVID-19, however mild. Symptoms may include fever, chills, cough, shortness of breath, sore throat, odynophagia, rhinorrhea, nasal congestion, loss of sense of smell, headache, muscle aches, fatigue, or loss of appetite.

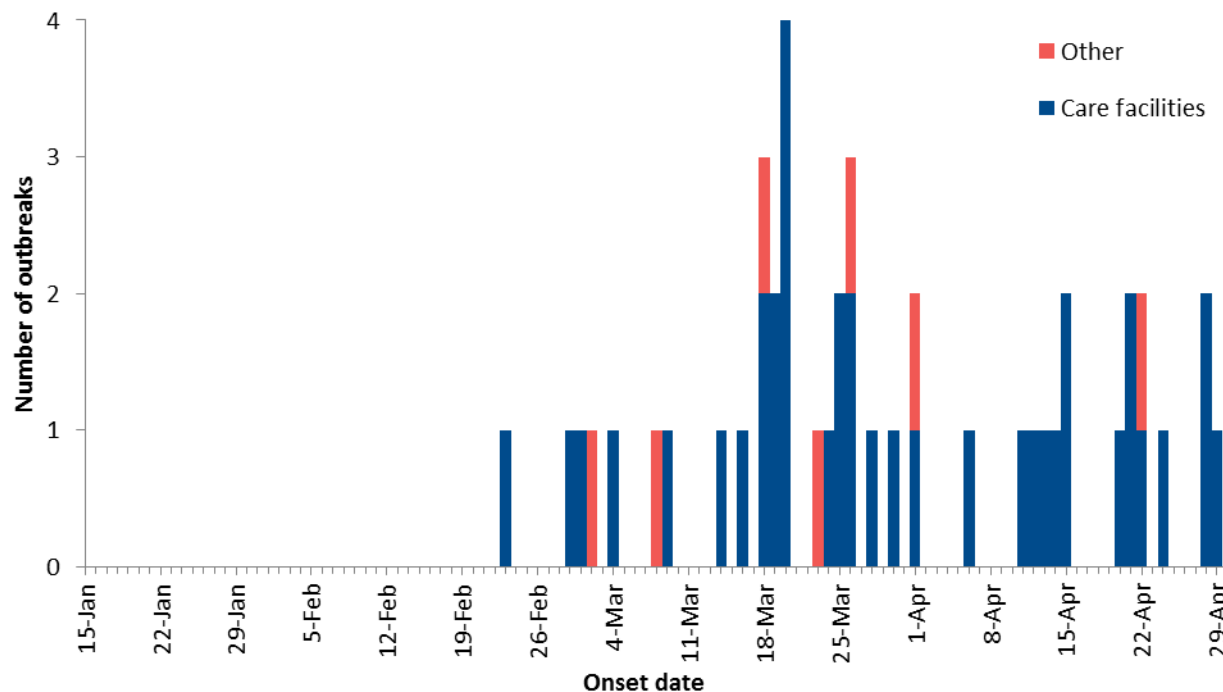
**Figure 4.** Number of new COVID-19 cases, hospital admissions and deaths by event date, BC, Jan 15 – April 30, 2020 (N=2,145\*)



Data source: HA lab-confirmed case reports

\*Missing or invalid event dates excluded (n=2145 cases, 404 hospitalizations, and 109 deaths)

**Figure 5: COVID-19 outbreaks\* by earliest date\*\*, BC, January 15 – May 1, 2020 (N=45)**



\* Care facility (acute/longterm care/independent living) outbreaks have at least one lab-confirmed COVID-19 staff or resident. Other outbreaks have two or more lab-confirmed COVID-19 cases diagnosed within a 14-day period in closed or common settings (e.g. penitentiary, shared living or work setting).

\*\* Earliest date is date of onset of earliest case in the outbreak (or reported date of earliest case when onset is unavailable) or date outbreak was declared.

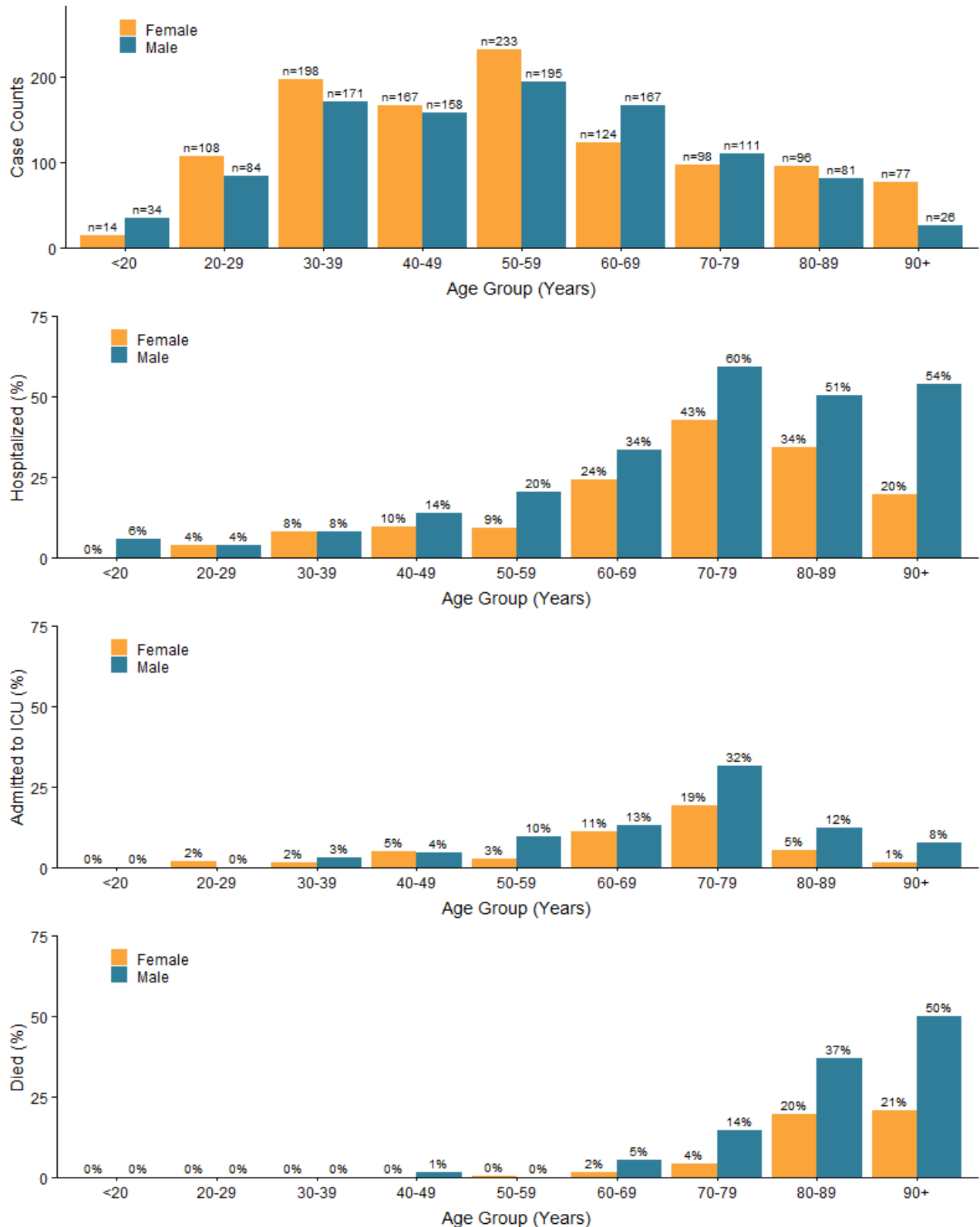
**Table 2: Outbreak and case counts of reported COVID-19 reported outbreaks\*, BC, January 15 – May 1, 2020 (N=45)**

	Care facility	Other settings	Total
<b>Outbreaks</b>			
<b>Total outbreaks</b>	<b>38</b>	<b>7</b>	<b>45</b>
New since yesterday	0	0	0
Active outbreaks	24	5	29
Outbreaks declared over	14	2	16
<b>Outbreak cases</b>			
<b>Total cases</b>	<b>413</b>	<b>346<sup>†</sup></b>	<b>759</b>
Residents/patients	260	122	382
Staff/other	153	224 <sup>†</sup>	377 <sup>†</sup>
<b>Total deaths</b>	<b>70</b>	<b>2</b>	<b>72</b>
Residents/patients	70	1	71
Staff/other	0	1	1

\* Care facility (acute/longterm care/independent living) outbreaks have at least one lab-confirmed COVID-19 staff or resident. Other outbreaks have two or more lab-confirmed COVID-19 cases diagnosed within a 14-day period in closed or common settings (e.g. penitentiary, shared living or work setting).

† Number decreased since yesterday due to data correction.

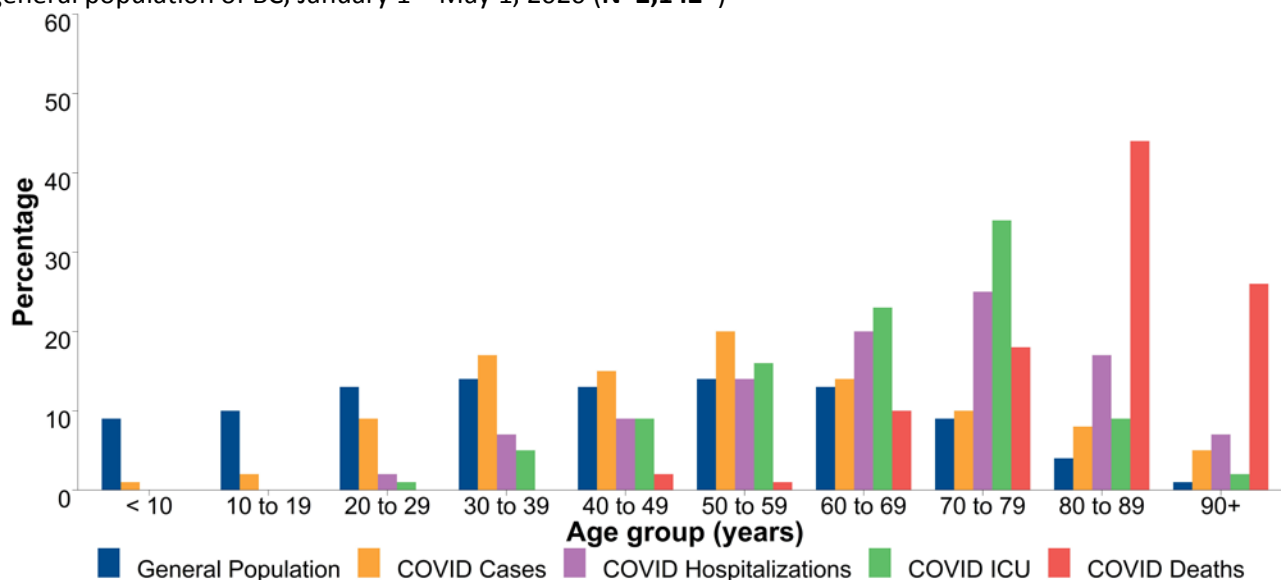
**Figure 6:** Counts of COVID-19 cases and proportions ever hospitalized, ever admitted to ICU, and with outcome of death by gender and age group, BC, January 1 – May 1, 2020 (N=2,142\*)



\* Includes cases with gender and age information available.

Note: Proportions calculated using the total number of cases in each gender and age group (displayed in top figure) as the denominator.

**Figure 7:** Percentage distribution of COVID-19 cases, hospitalization, ICU admissions and deaths by age, compared to the general population of BC, January 1 – May 1, 2020 (N=2,142\*)



\*Includes 2,142 cases, 435 hospitalizations, 158 ICU admissions, and 112 deceased with age information available.

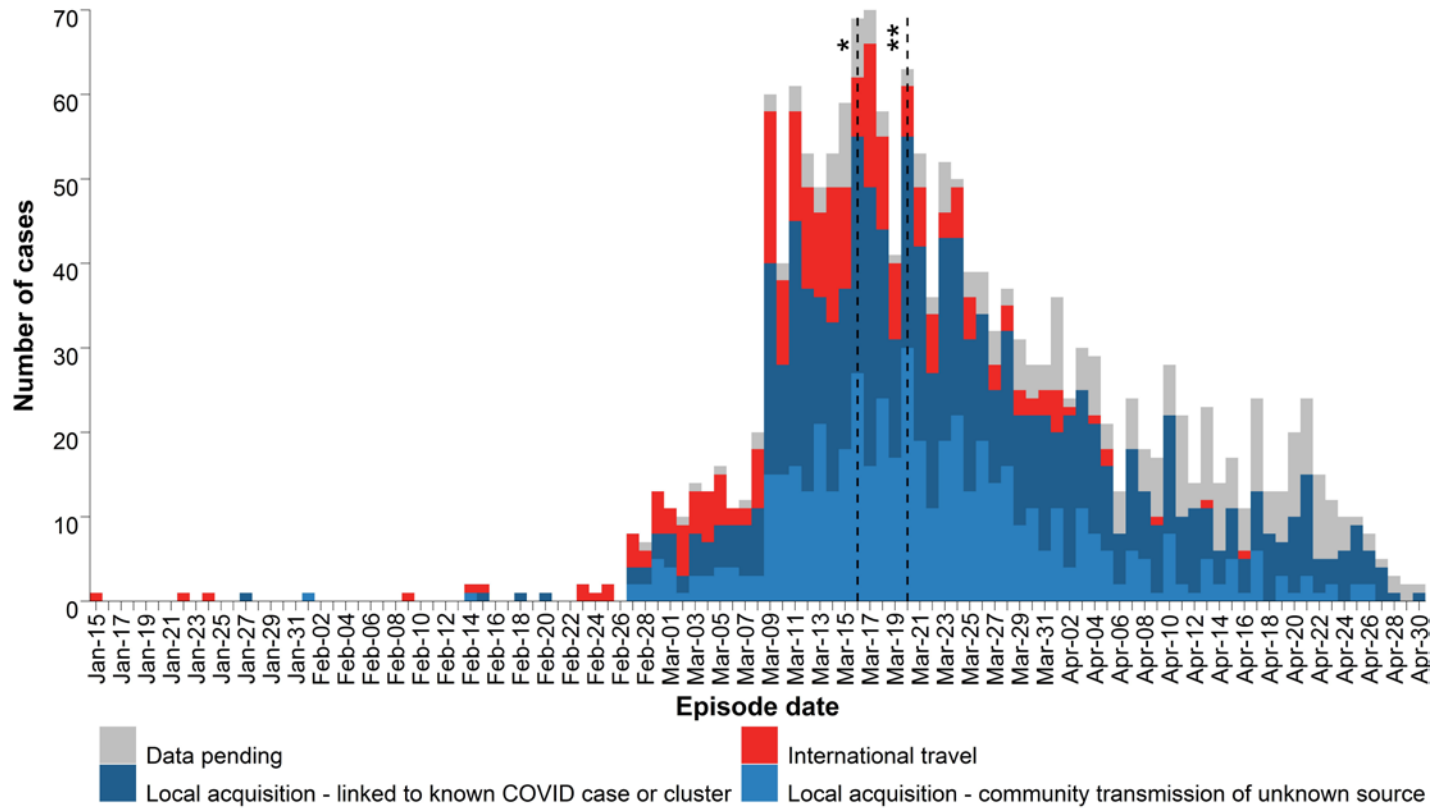
Note: COVID hospitalizations have been reported in the <10y and 10-19y age groups but represent <1% of hospitalizations and are therefore not visible.

**Table 3:** Percentage distribution of COVID-19 cases, hospitalization, ICU admissions and deaths by age, compared to the general population of BC, January 1 – May 1, 2020 (N=2,142\*)

Age groups	COVID cases (%)	Cases ever hospitalized (%)	Cases ever in ICU (%)	COVID deaths (%)	General population (%)
<10 Years	1	<1	0	0	9
10-19 Years	2	<1	0	0	10
20-29 Years	9	2	1	0	13
30-39 Years	17	7	5	0	14
40-49 Years	15	9	9	2	13
50-59 Years	20	14	16	1	14
60-69 Years	14	20	23	10	13
70-79 Years	10	25	34	18	9
80-89 Years	8	17	9	44	4
90+ Years	5	7	2	26	1

\*Only cases with age information available are included.

**Figure 8:** Likely source of infection for COVID-19 cases in BC by episode date†, January 1 – April 30, 2020<sup>§</sup> (N=1,755)



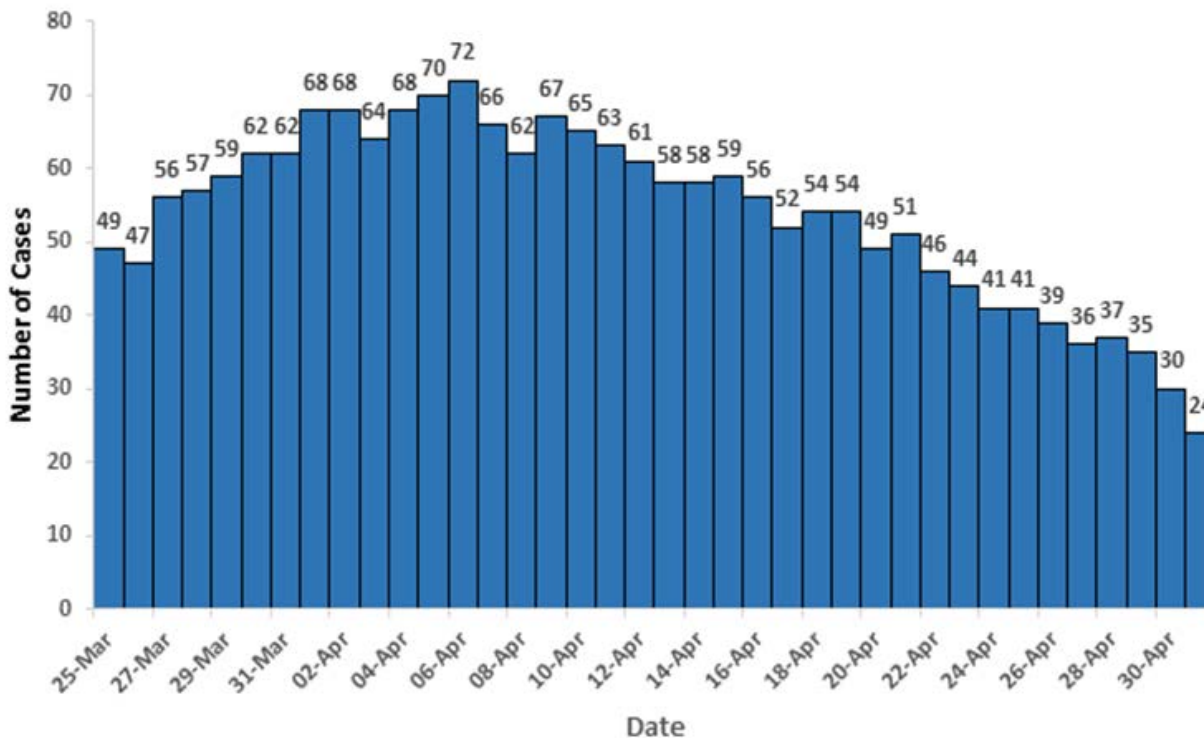
† Data source: Panorama public health information system and HA lab-confirmed case reports submitted daily.

§ Episode date is based on symptom onset date (n=1681), if not available then date COVID-19 was reported to health authority (n=74). The number of available symptom onset dates has risen since the last update due to merging of two data sources to provide more complete information. This change can affect the distribution of the curve.

\* March 16: Entry of foreign nationals banned; symptomatic individuals banned from flights to Canada; international flights restricted to four national airports.

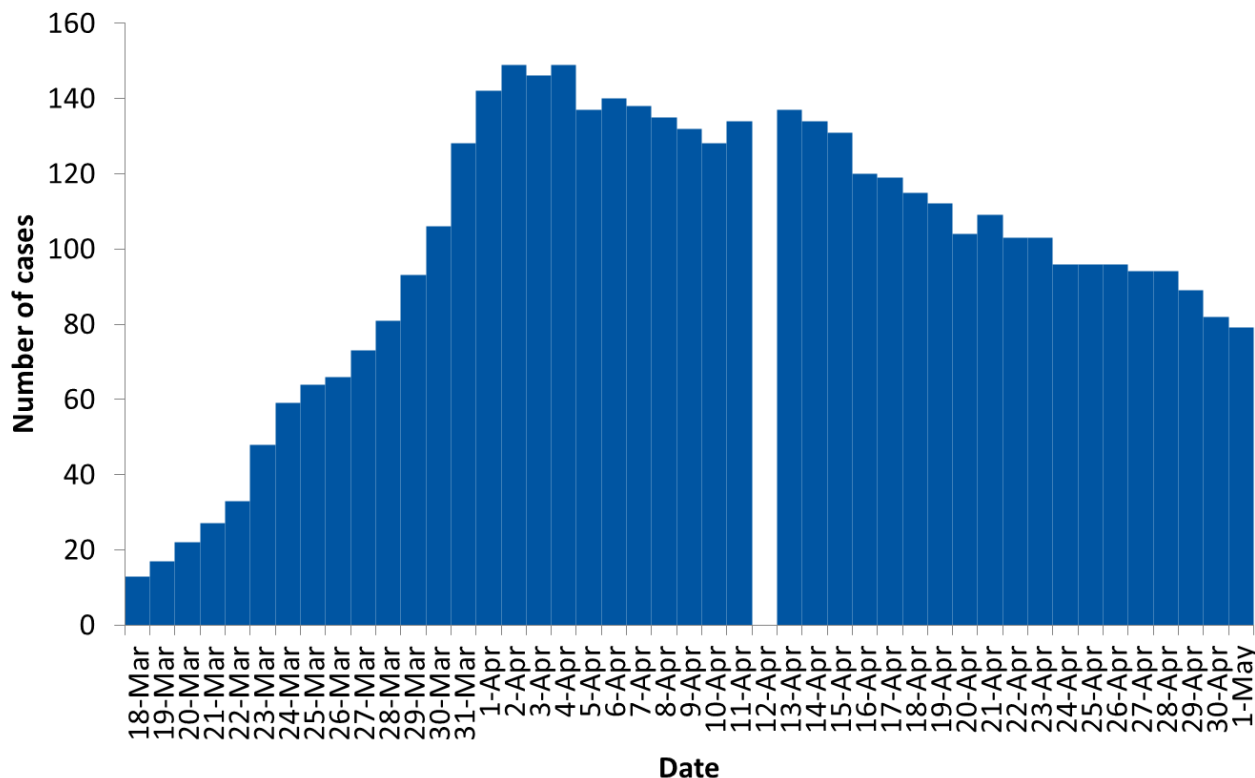
\*\* March 20: US/Canada border closed to non-essential travel.

**Figure 9:** Total positive COVID-19 cases in critical care by day, BC, March 25 – May 1, 2020



Data source: PHSA May 1. Note: critical care data may change over time due to small adjustments and improvements in data quality.

**Figure 10:** Number of confirmed COVID-19 cases in hospital by day, BC, March 18 – May 1, 2020



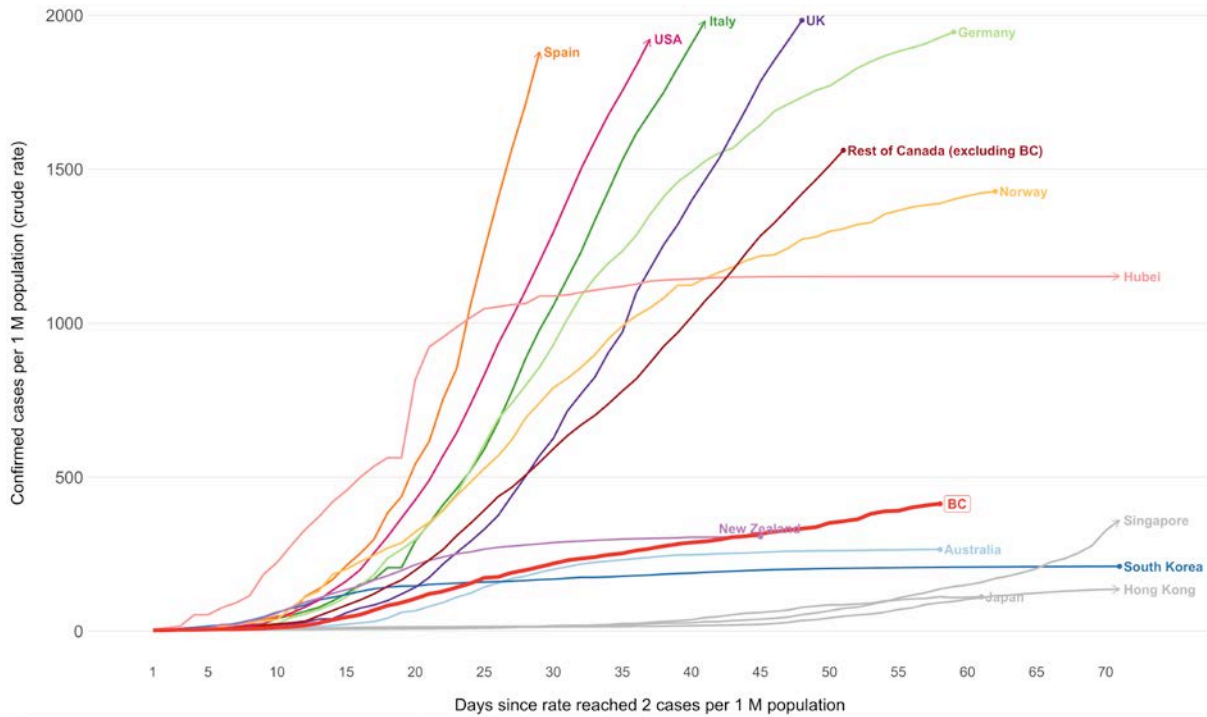
Data source: HA lab-confirmed case reports. Data available starting March 18 and not available for April 12.

Note: Hospitalization data may be incomplete or out of date (i.e., under-estimates) owing to the timing and process for case status update.



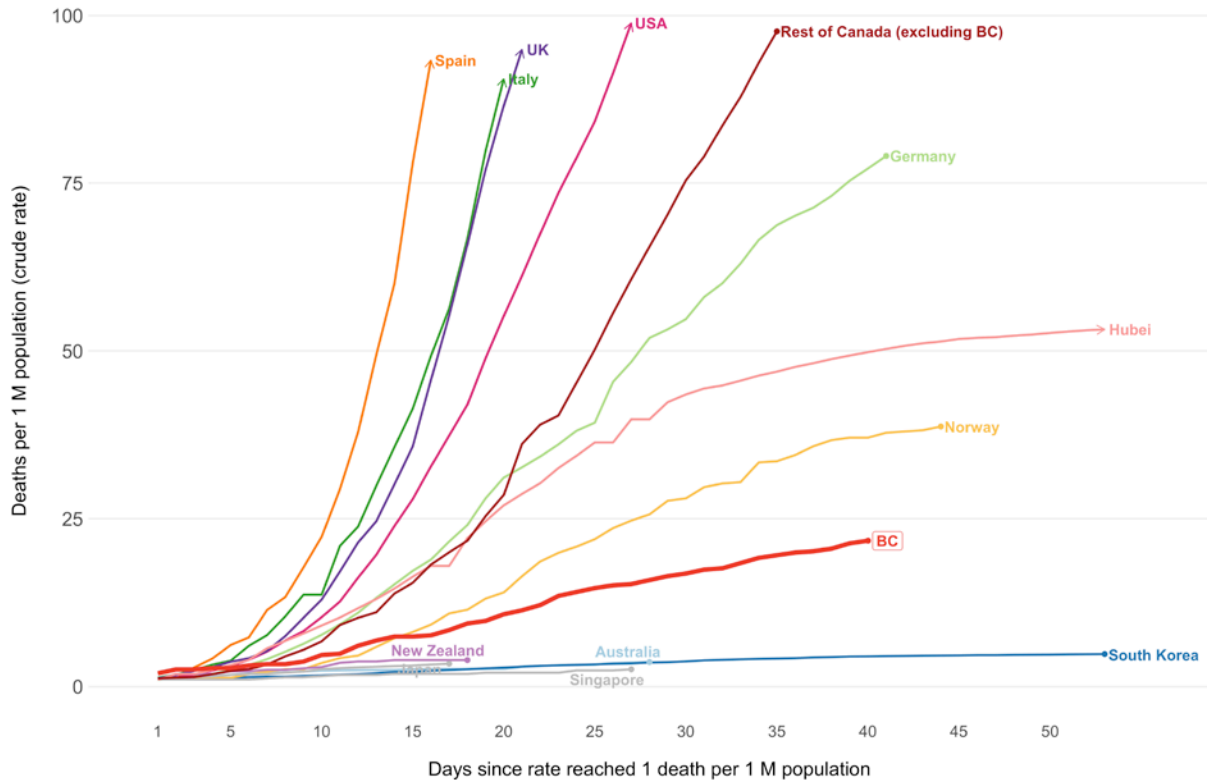
International and National Epidemiological Comparisons

Figure 11: Cumulative diagnosed COVID-19 case rates by select countries vs BC and Canada



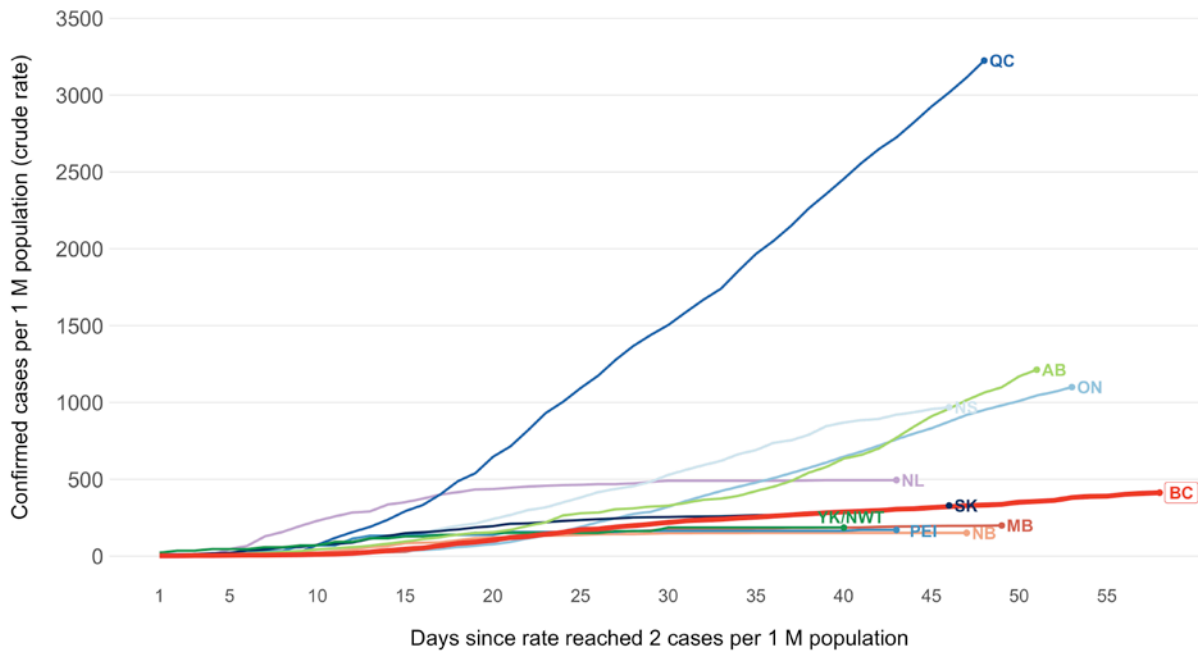
Note: QC, and, to a lesser extent, ON, have the largest impact on the values for rest of Canada.

Figure 12: Cumulative COVID-19 death rates by select countries vs BC and Canada

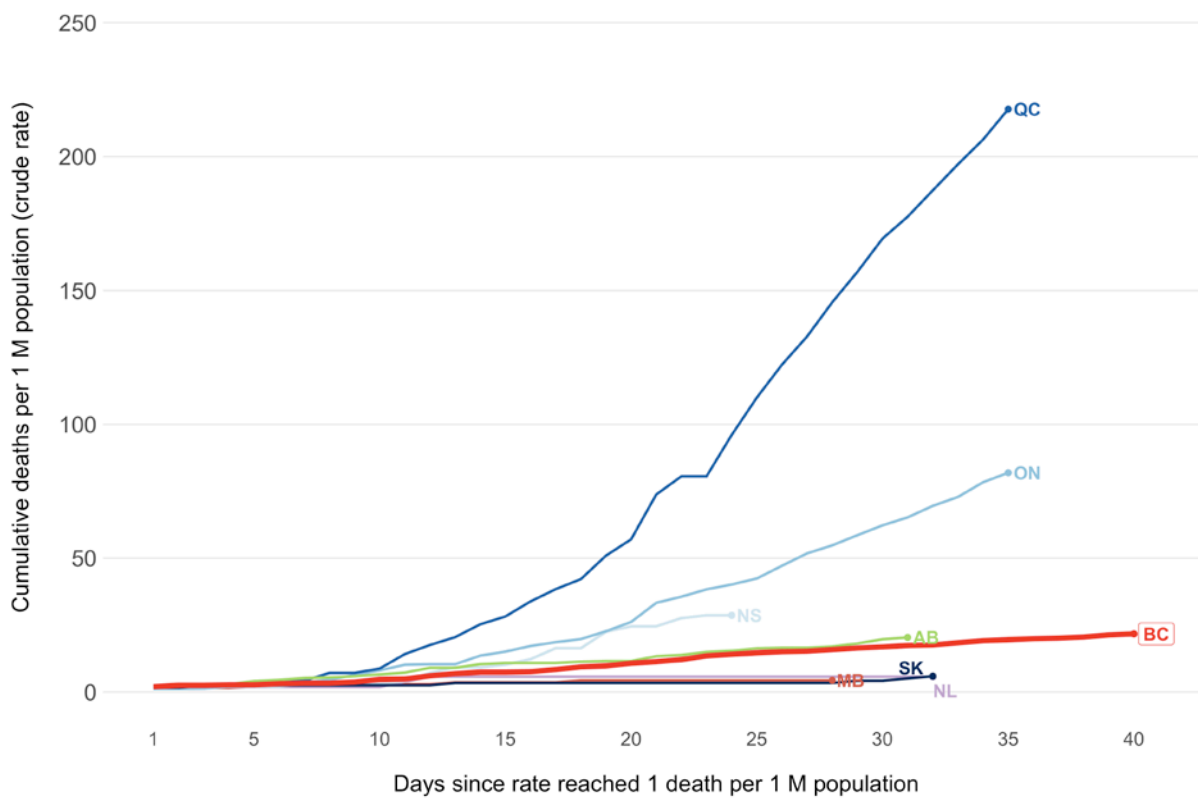


Note: QC, and, to a lesser extent, ON, have the largest impact on the values for rest of Canada.

**Figure 13:** Cumulative diagnosed COVID-19 case rates in Canada



**Figure 14:** Cumulative COVID-19 death rates in Canada



Data sources for international and national epidemiological comparison (all extracted April 30, 2020):

JHU CSSE for global cases and deaths: <https://github.com/CSSEGISandData/COVID-19>

JHU CSSE for Canadian provincial deaths outside of BC

For Canadian provincial cases: Provincial data sources

BC cases and deaths: BCCDC

Global population denominator from the United Nations